



RETAIL SPACE

WANTAGH, NY

CHERRYWOOD SHOPPING CENTER

1164 WANTAGH AVENUE

SIZE

1,200 SF

4,875 SF

CO-TENANTS

Iavarone Brothers, CVS, Umberto's, Dunkin', Chipotle, ANB Baby

NEIGHBORS

Petco, Starbucks, The French Workshop, Guac Shop, Optum Pediatric Urgent Care, Webster Bank, KFC, Smashburger, Chase Bank, Burger King, USPS, Taco Bell

COMMENTS

Signalized intersection at Wantagh Avenue and Jerusalem Avenue

Each space includes a full basement

Upscale neighborhood shopping center, serves the area surrounding the densely populated and affluent Wantagh, NY

CONTACT EXCLUSIVE AGENTS

JASON SOBEL

jsobel@ripcony.com
516.933.8880

GREG BATISTA

gbatista@ripcony.com
516.933.8880

SYDNEY SCHMITT

sschmitt@ripcony.com
516.933.8880



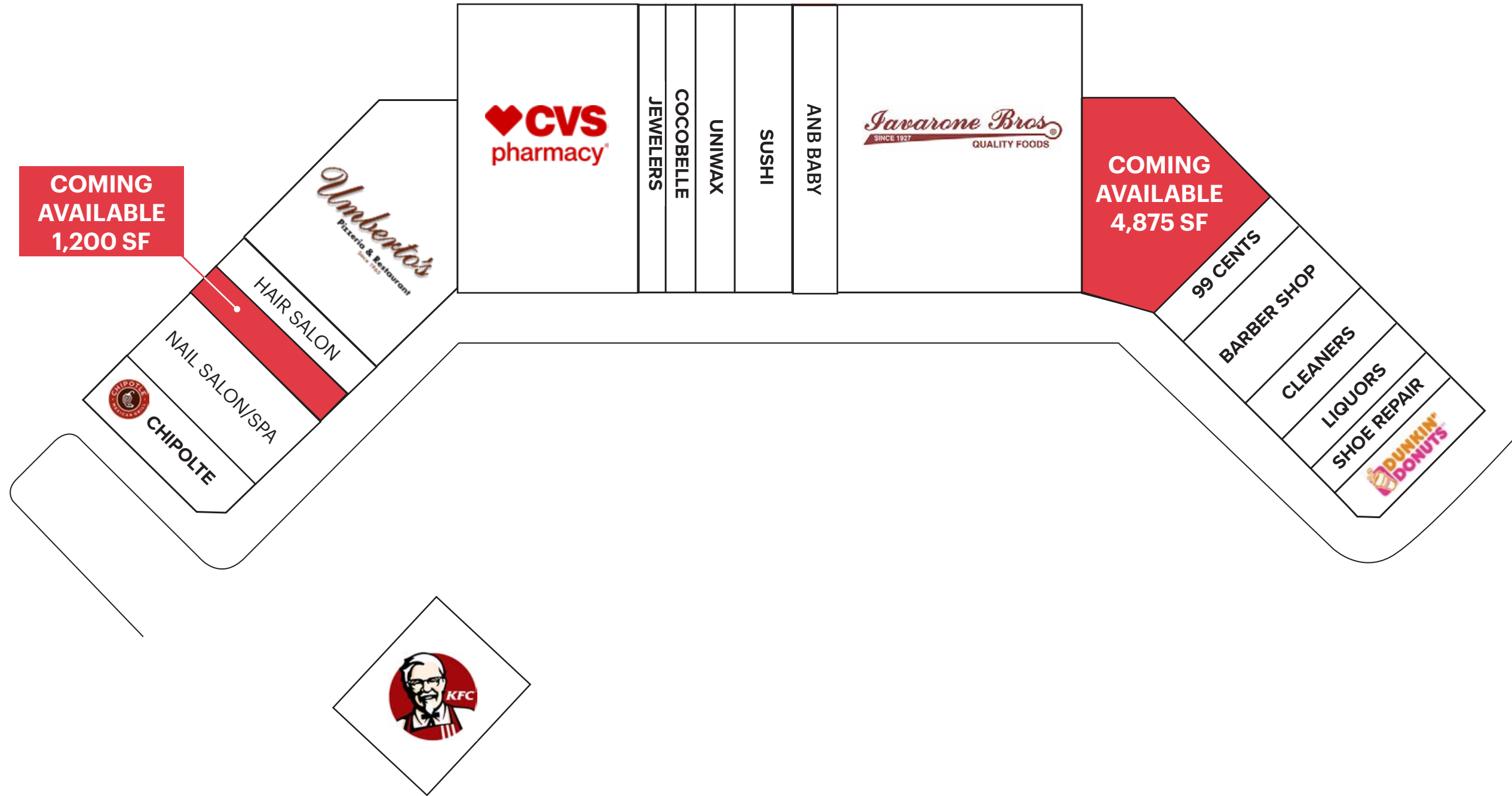
1000 Woodbury Road
Suite 100
Woodbury, NY 11797
516.933.8880

Please visit us at ripcony.com for more information

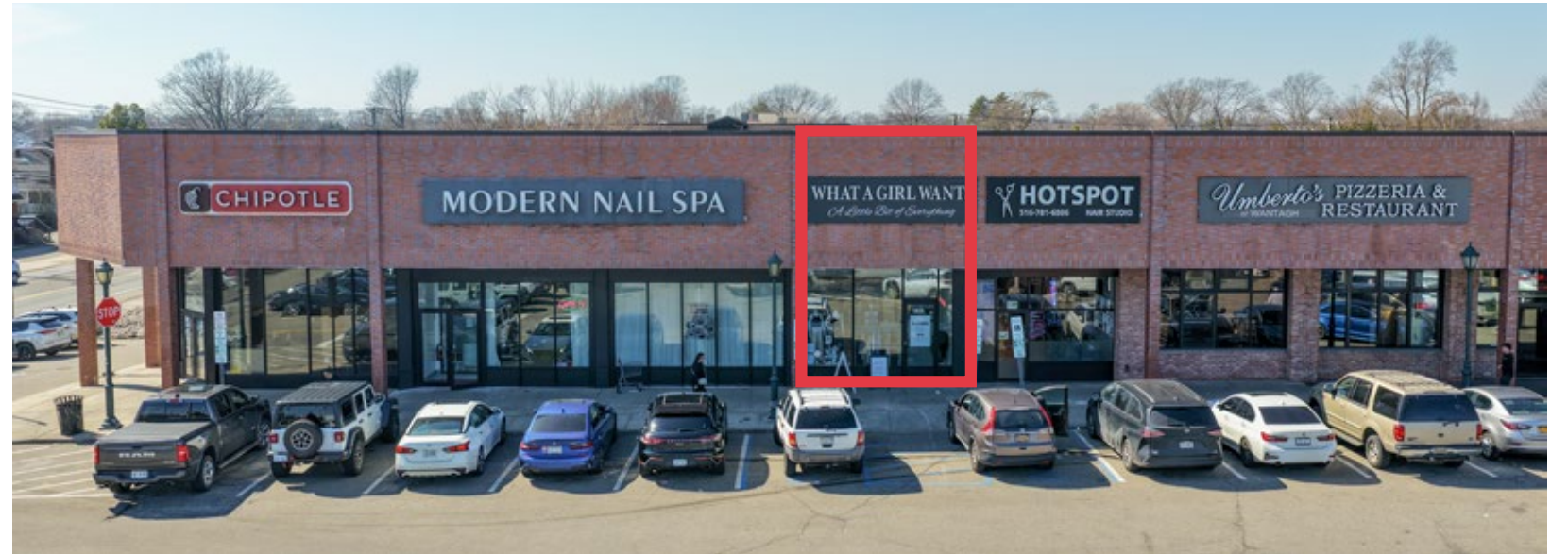
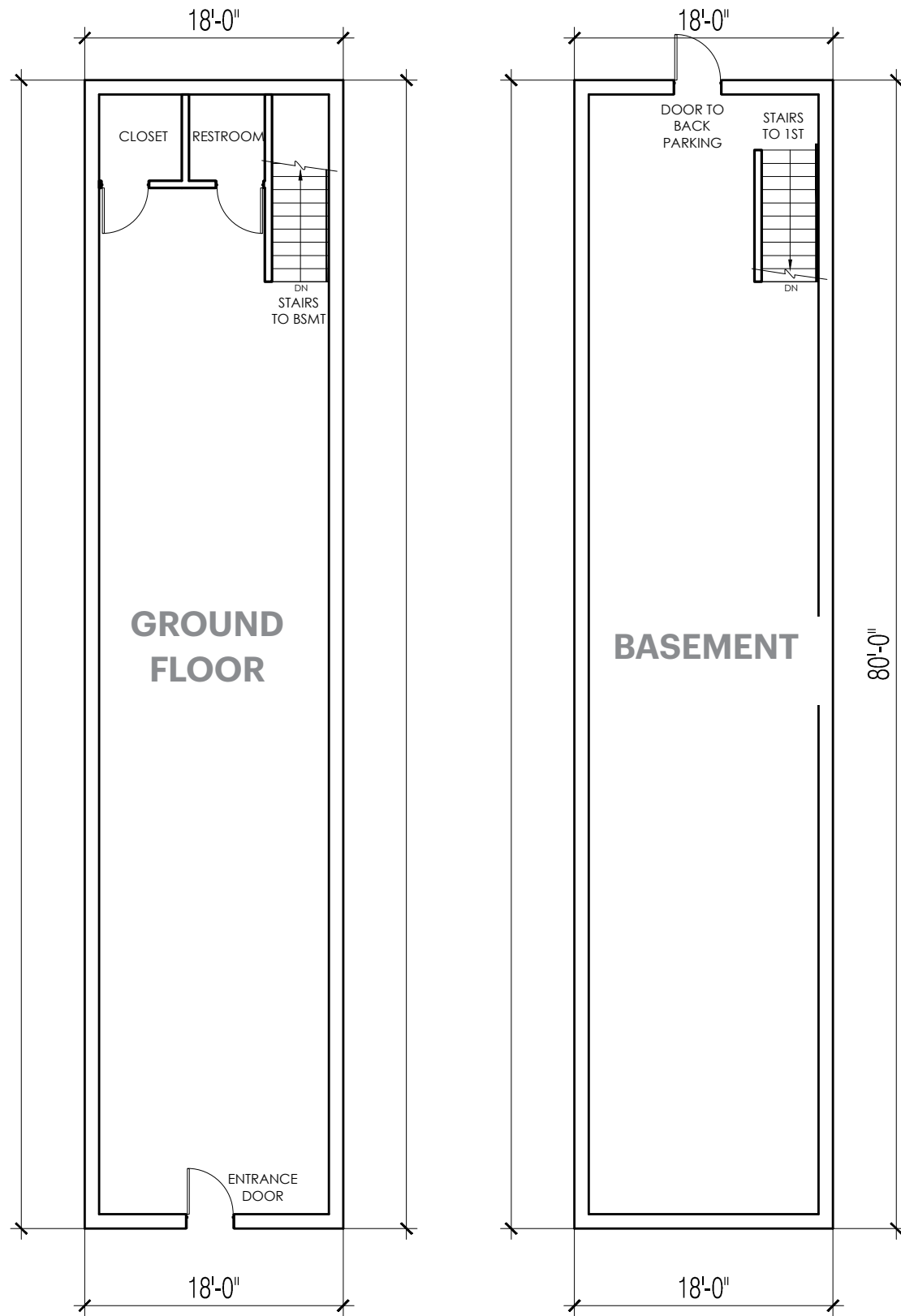
This information has been secured from sources we believe to be reliable, but we make no representations as to the accuracy of the information. References to square footage are approximate. Buyer must verify the information and bears all risk for any inaccuracies.

SITE PLAN

GROUND FLOOR



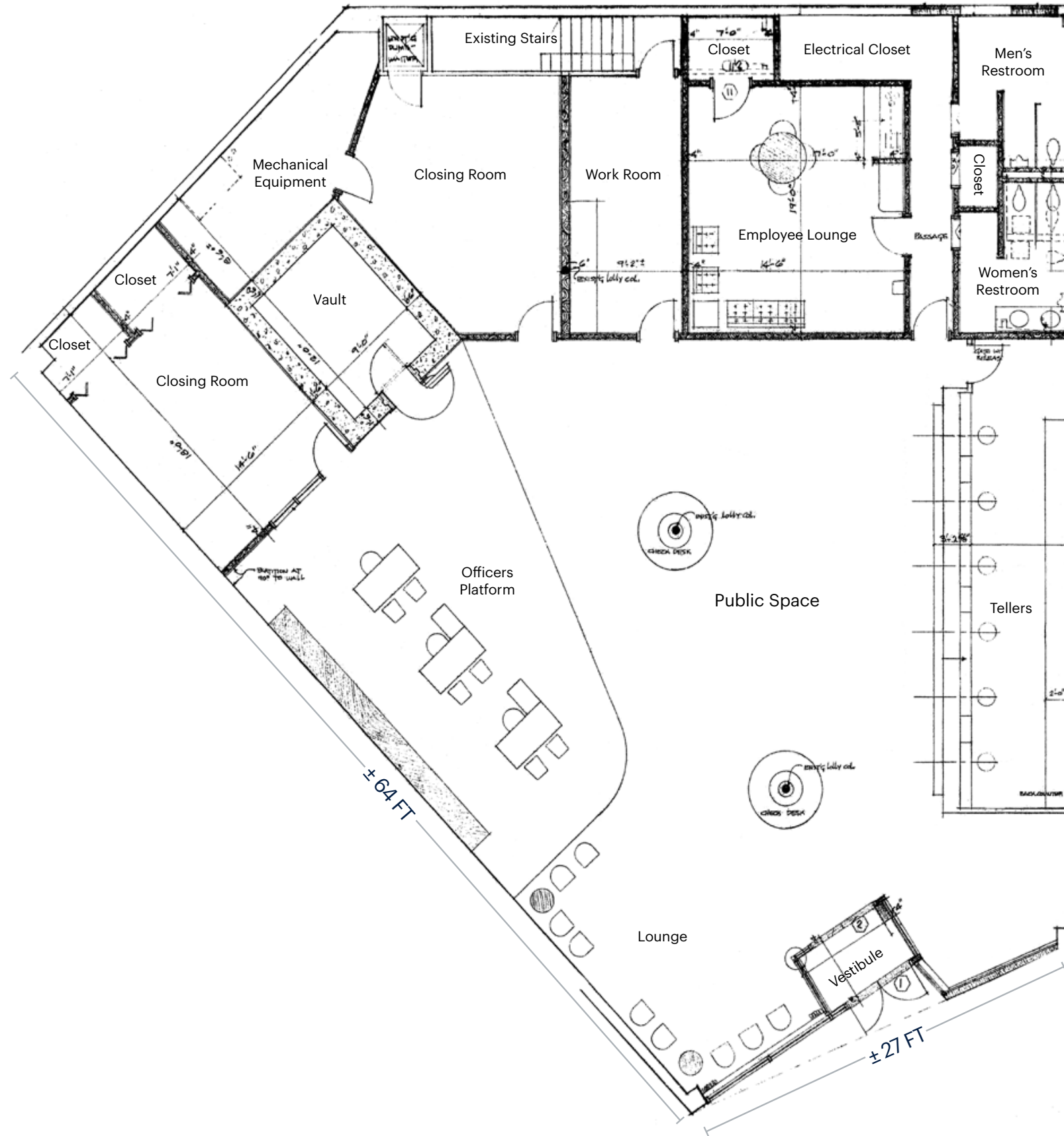
COMING AVAILABLE - 1,200 SF



COMING AVAILABLE - 4,875 SF



COMING AVAILABLE - 4,875 SF



HIGHLY DENSE MARKET ON THE CORNER OF WANTAGH AVENUE AND JERUSALEM AVENUE (105)



MARKET AERIAL



CHERRYWOOD SHOPPING CENTER

- CVS pharmacy
- Umberto's
- CUPIPOTE
- DUNKIN'
- Javarone Bros
- basikin
- Robbini's

Pizza Hut

- KWONG MING CHINESE RESTAURANT
- NAIL SALON
- FOOT SPA
- BAGEL SHOP

King Kullen

SOUTHERN STATE PARKWAY

WILLOW WOOD SHOPPING CENTER

- petco
- THE FRENCH WORKSHOP
- GUAC SHOP
- Jovia
- Webster

SEAFORD OYSTER BAY EXPRESSWAY

WANTAGH STATE PARKWAY

JERUSALEM AVENUE

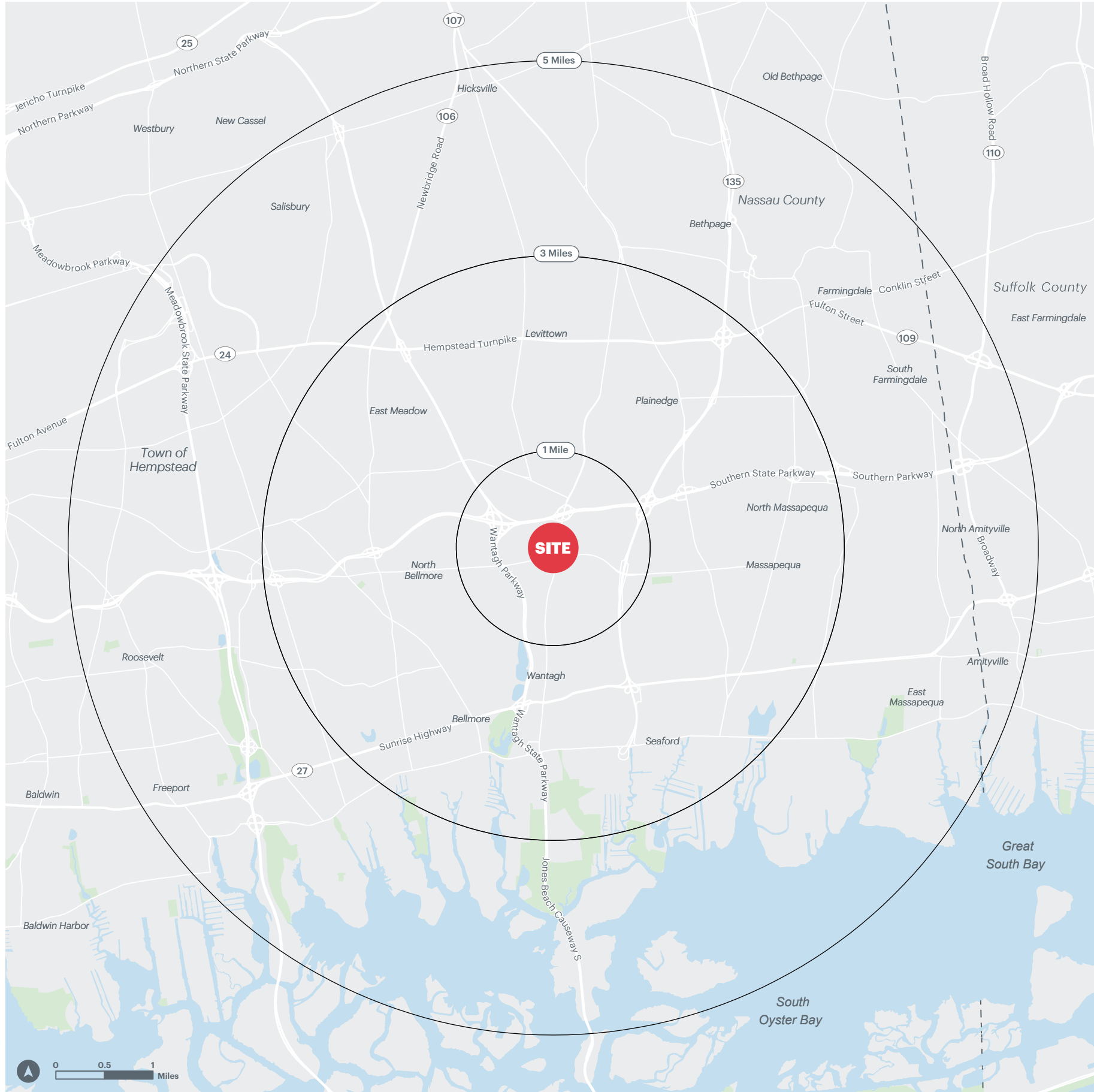
WANTAGH AVENUE

JERUSALEM AVENUE

WANTAGH HIGH SCHOOL

Duckpond Drive Park

AREA DEMOGRAPHICS



1 MILE RADIUS

POPULATION

18,507

HOUSEHOLDS

6,325

AVERAGE HOUSEHOLD INCOME

\$194,344

MEDIAN HOUSEHOLD INCOME

\$168,382

COLLEGE GRADUATES (Bachelor's +)

6,476 - 49.0%

TOTAL BUSINESSES

336

TOTAL EMPLOYEES

5,698

DAYTIME POPULATION (w/ 16 yr +)

14,858

3 MILE RADIUS

POPULATION

185,983

HOUSEHOLDS

62,202

AVERAGE HOUSEHOLD INCOME

\$191,397

MEDIAN HOUSEHOLD INCOME

\$158,550

COLLEGE GRADUATES (Bachelor's +)

64,625 - 48.0%

TOTAL BUSINESSES

3,919

TOTAL EMPLOYEES

53,530

DAYTIME POPULATION (w/ 16 yr +)

152,602

5 MILE RADIUS

POPULATION

446,307

HOUSEHOLDS

144,710

AVERAGE HOUSEHOLD INCOME

\$181,390

MEDIAN HOUSEHOLD INCOME

\$151,041

COLLEGE GRADUATES (Bachelor's +)

145,834 - 44.0%

TOTAL BUSINESSES

12,786

TOTAL EMPLOYEES

142,677

DAYTIME POPULATION (w/ 16 yr +)

369,978