

**10** **GEORGE STREET**  
LOWELL, MA

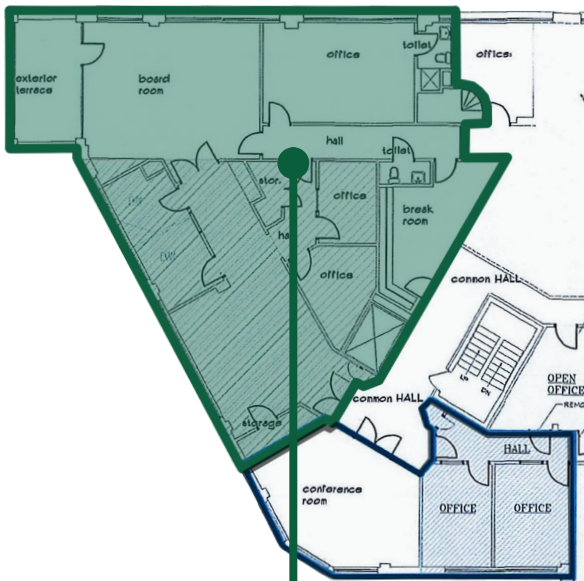
**GATEWAY CENTER I**  
FOR LEASE .3,840 SF



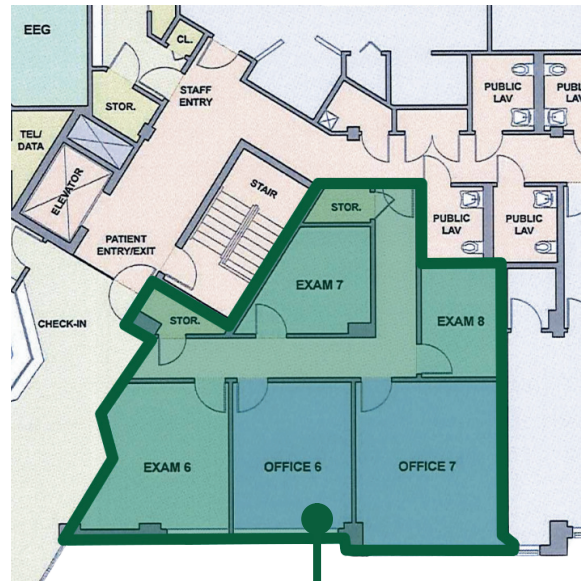
# PROPERTY SUMMARY/SPECIFICATIONS

## SUMMARY

Gateway Center I is a woman-owned and operated professional and medical office building, centrally located at 10 George Street in downtown Lowell, Massachusetts. Recognized as one of the city's most prestigious office buildings, the property combines modern amenities with exceptional convenience and accessibility to nearby highways. Offering on-site management, ample parking, and a prime location near major highways Gateway Center I provides tenants with a highly functional and client-friendly environment. With its blend of professionalism, care-driven ownership, and strategic urban positioning, Gateway Center I remains a top choice for discerning medical and professional office users in Greater Lowell.



**2,790 SF**  
2ND FLOOR

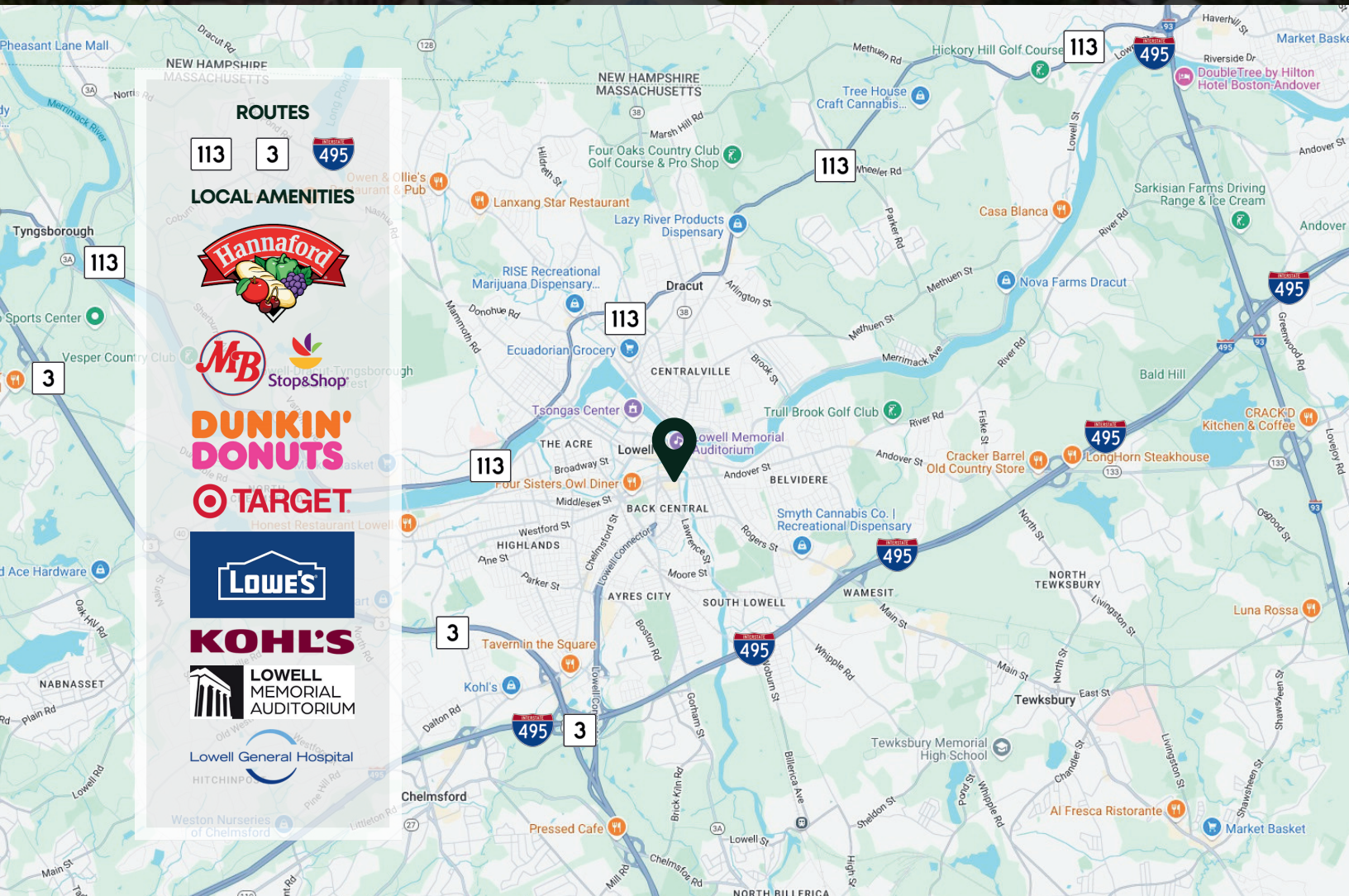


**1,050 SF**  
3RD FLOOR

## SPECIFICATIONS

- Year built: 1997
- Size: 40,000 SF
- Stories: Three (3)
- Land: 0.99 AC
- Construction: Masonry
- Parking: 72 spaces
- Zoning: DMU
- Two (2) in-suite restrooms
- Outdoor balcony
- Sprinkler: Wet system
- Clear Height: 12' to slab
- Elevator: One (1) passenger
- Security: On-site
- Availability: 2 suites - 3,840 SF
- Women Owned and Operated
- Security/On-Site Management

# THE PROPERTY/LOCATION



PROFESSIONAL AND MEDICAL SPACE/2 SUITES . 3,840 SF AVAILABLE

**10** **GEORGE STREET**  
LOWELL, MA

**GATEWAY CENTER I**  
FOR LEASE .3,840 SF



PROFESSIONAL AND MEDICAL SPACE/2 SUITES . 3,840 SF AVAILABLE

COMMERCIAL  
**O'BRIEN**  
PROPERTIES, INC

**ROB MCGARRY**  
SENIOR ASSOCIATE

978.209.3211  
rob@obriencommercial.com