

# Immediate Occupancy For Lease

AVAILABLE:  
6,500 SF

**929 Childs St.  
Wheaton, IL**

AVAILABLE SPACE: **6,500 SF OFFICE SPACE**

LEASE RATE: **SUBJECT TO OFFER**



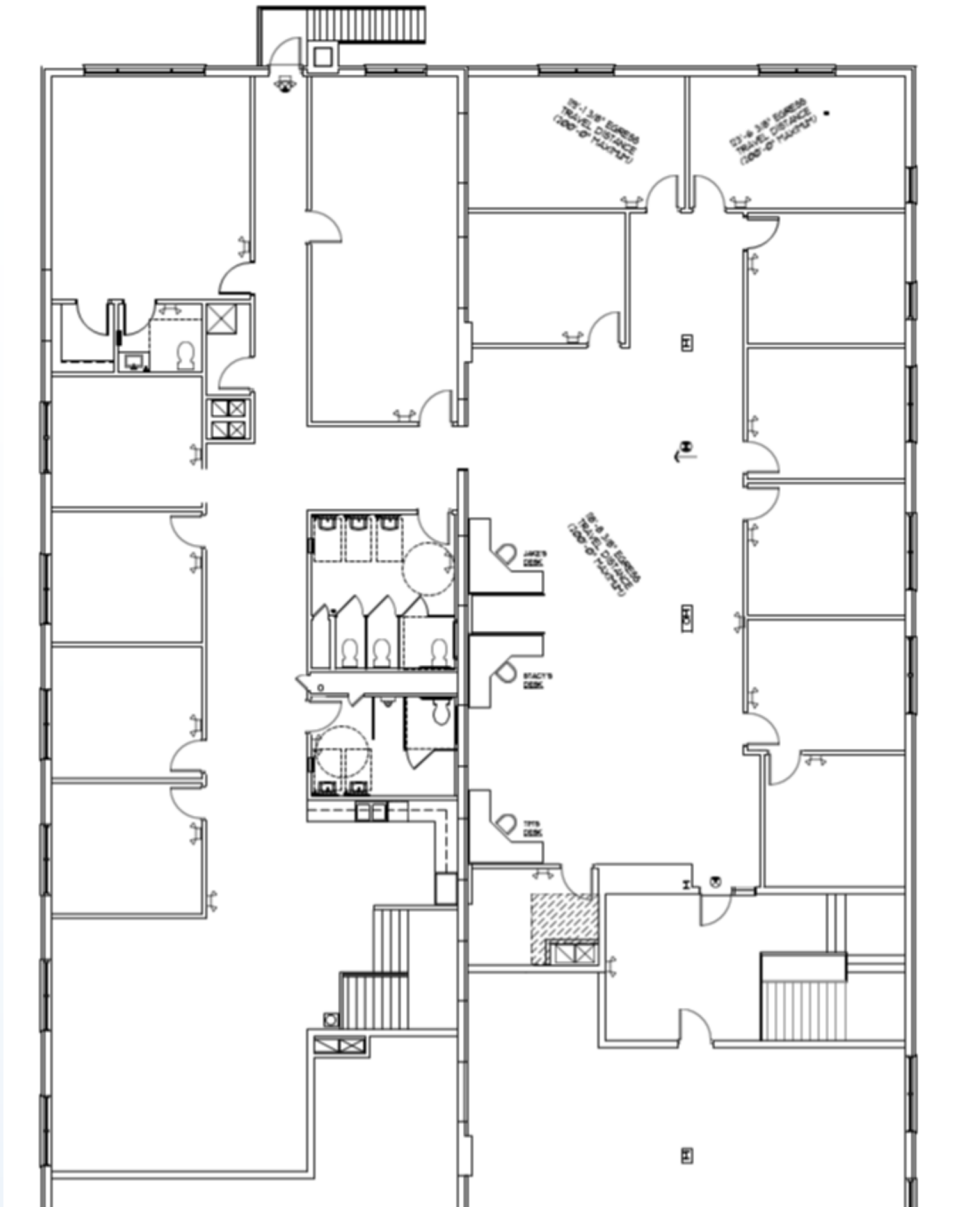
- ✓ Office Space with Close Proximity to Downtown Wheaton
- ✓ High End Finishes
- ✓ 2<sup>nd</sup> Story Office Space
- ✓ Turnkey Office Space

➤ **John M. Joyce**  
847-612-0464  
jjoyce@entreccommercial.com

➤ **Sam Deihls**  
224-202-6290  
sdeihls@entreccommercial.com

 [entreccommercial.com](http://entreccommercial.com)

# Floor Plan



**John M. Joyce**  
847-612-0464  
jjoyce@entreccommercial.com

**Sam Deihls**  
224-202-6290  
sdeihs@entreccommercial.com

entreccommercial.com  
3550 Salt Creek Lane, Suite 104  
Arlington Heights, IL 60005

