

# 1411 5TH STREET

## SANTA MONICA, CALIFORNIA



**STARRPOINT**  
commercial partners

**LEASING INFORMATION:**

**Randy Starr**  
[rstarr@starrpoint.com](mailto:rstarr@starrpoint.com)  
**310-899-1800**  
BRE# 01077706

This document shall not be deemed to be an offer to sell or lease, nor is it intended to employ any outside broker without such broker entering into a written brokerage commission agreement acceptable to the owner or lessor and its counsel. Although all information furnished regarding property for sale, rental or financing is from sources deemed reliable, such information has not been verified and no express representation is made nor is any to be implied as to the accuracy thereof and it is submitted subject to errors, omissions, change of price, rental or other conditions, prior sale, lease or financing or withdrawal without notice.

### CREATIVE OFFICE SPACE AVAILABLE

**SPACE** Suite 300 / 3rd Floor

**SIZE** 5,810 RSF

**RATE** \$4.85 per RSF, Modified Gross

**TERM** 2 - 5 years

**AVAILABLE** Immediately

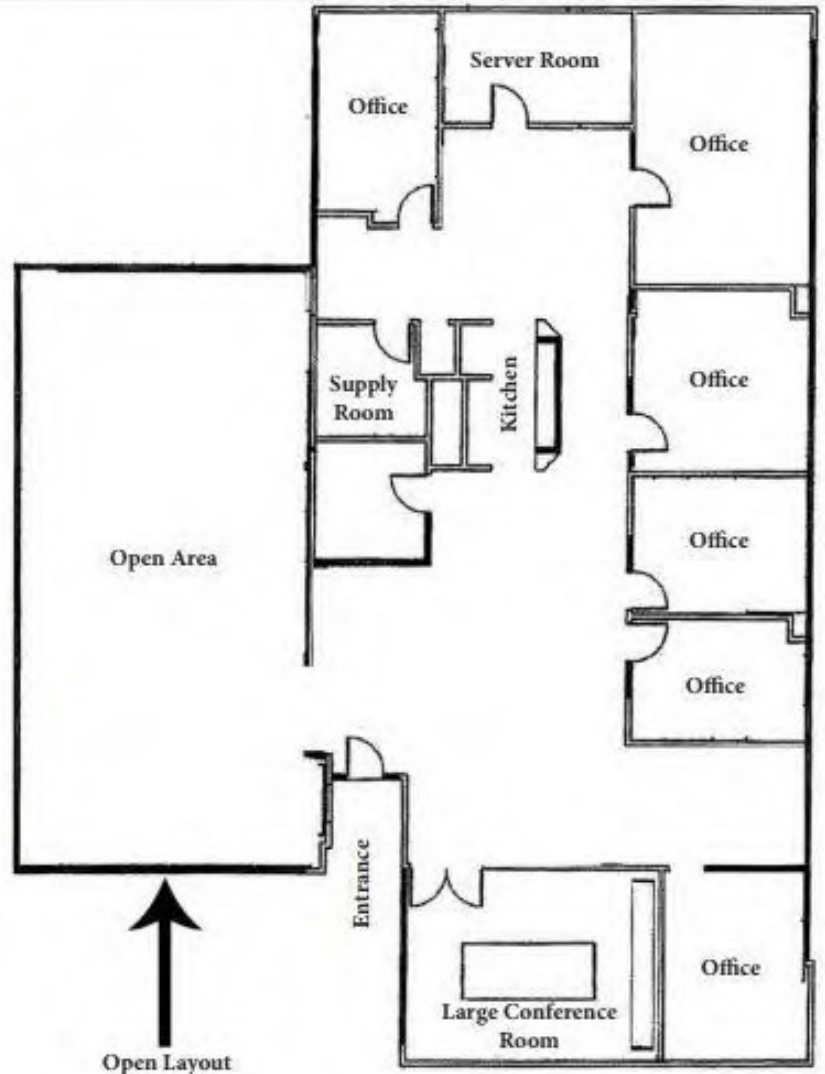
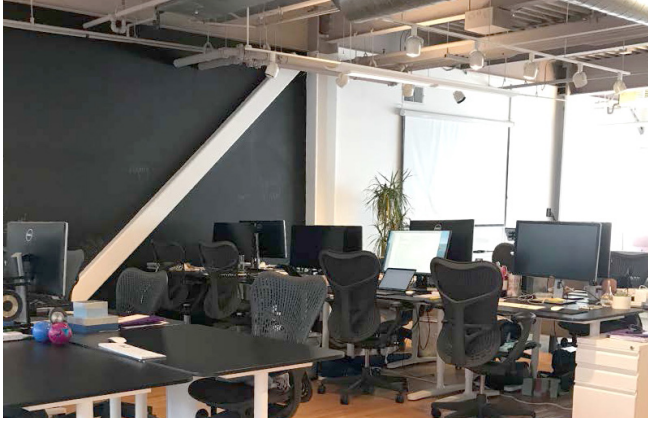
**PARKING** 3 per 1,000 SF; \$225 each monthly

**COMMENTS**

- Large open work area, 6 private offices, conference room & kitchen.
- Turn-key, fully furnished.
- Operable windows.
- Abundant natural light.
- Walk to Metro at 4th/Colorado.

# 1411 5TH STREET

SANTA MONICA, CALIFORNIA



# STARRPOINT

commercial partners

## LEASING INFORMATION:

Randy Starr  
rstarr@starrpoint.com  
310-899-1800  
BRE# 01077706

# 1411 5TH STREET

## SANTA MONICA, CALIFORNIA



### AMENITIES MAP

- |                               |                       |
|-------------------------------|-----------------------|
| 1 Philz Coffee                | 11 BOA                |
| 2 Sidecar Donuts              | 12 Water Grille       |
| 3 Demitasse                   | 13 Bay Cities Deli    |
| 4 Equinox                     | 14 Pono Burger        |
| 5 Fairmont Hotel & Bungalow   | 15 Mendocino Farms    |
| 6 Proper Hotel                | 16 Cassia             |
| 7 Downtown Santa Monica Metro | 17 Wally's Restaurant |
| 8 The Misfit                  | 18 Hillstone          |
| 9 Elephante                   | 19 Apple Store        |
| 10 Meat On Ocean              |                       |

# STARRPOINT

commercial partners

#### LEASING INFORMATION:

Randy Starr  
 rstarr@starrpoint.com  
 310-899-1800  
 BRE# 01077706