

For Lease

📍 900 North Avenue, Plainfield, NJ
🏠 142,660 SF Available



Get in Touch

Jordan Metz
Senior Vice President
973-493-0385
jordan@metzindustrial.com

Benito Abbate
Senior Associate
908-655-8331
ben@metzindustrial.com

James Friel
Sales Associate
908-305-9001
ben@metzindustrial.com

Property Highlights

Property Features

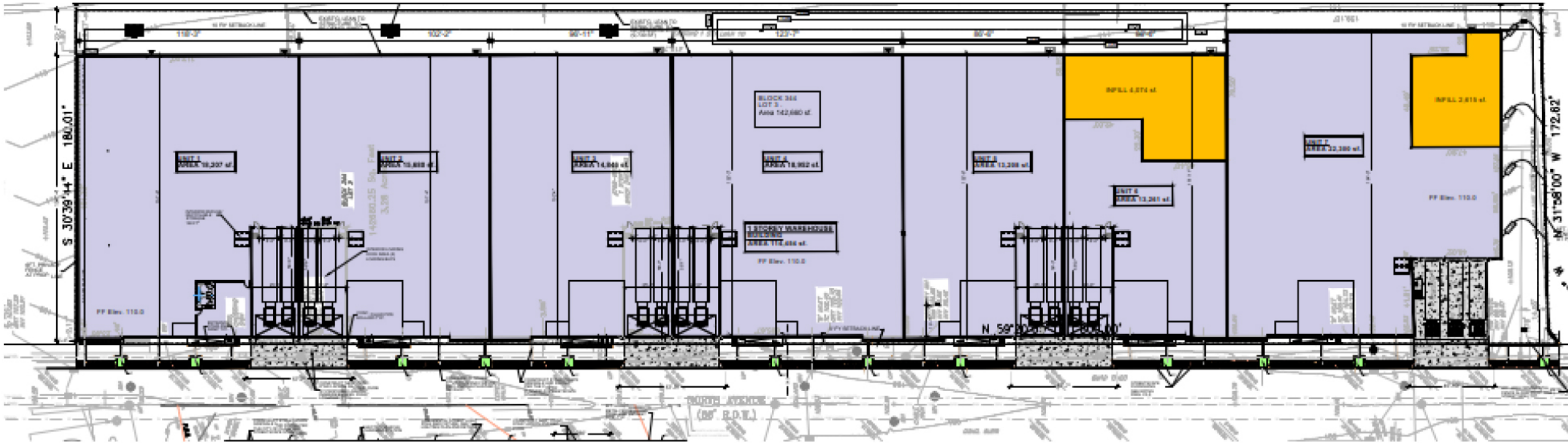
-  **142,660** Total Building Size | Minimum **13,000 SF Units**
- Flexible** Sizes Available
-  Ideal For **Light Industrial & Recreational** Uses
-  **16 Loading** Docks / Potential to **Convert to** Drive-in Doors
-  **32' Clear** Ceiling Heights
-  **ESFR Sprinkler** | **Ample** Power
-  **Ample** Parking & **Private** Parking Deck
-  **4 Acres** Total

Location Highlights

- **Zoned Industrial (I-1)**
- Access to **Routes 22 & 28 & I-78**
- 1 Mile to **NJ Transit Train Station**
- 15 Miles to **Newark Liberty Airport**
- 20 Miles to **Port Elizabeth/Newark**



Unit Floor Plan



PROPERTY FLOOR PLAN

<ul style="list-style-type: none"> • Unit 1 • 18,300 SF • 3 Docks • Build to Suit Office 	<ul style="list-style-type: none"> • Unit 2 • 18,800 SF • 2 Docks • Build to Suit Office 	<ul style="list-style-type: none"> • Unit 3 • 14,945 SF • 2 Docks • Build to Suit Office 	<ul style="list-style-type: none"> • Unit 4 • 18,932 SF • 2 Docks • Build to Suit Office 	<ul style="list-style-type: none"> • Unit 5 • 13,202 SF • 2 Docks • Build to Suit Office 	<ul style="list-style-type: none"> • Unit 6 • 13,261 SF • 2 Docks • Build to Suit Office 	<ul style="list-style-type: none"> • Unit 7 • 22,180 SF • 3 Docks • Build to Suit Office
---	---	---	---	---	---	---



Ideal For Light Industrial Uses | Flexible Unit Sizes Available



PROPERTY RENDERINGS



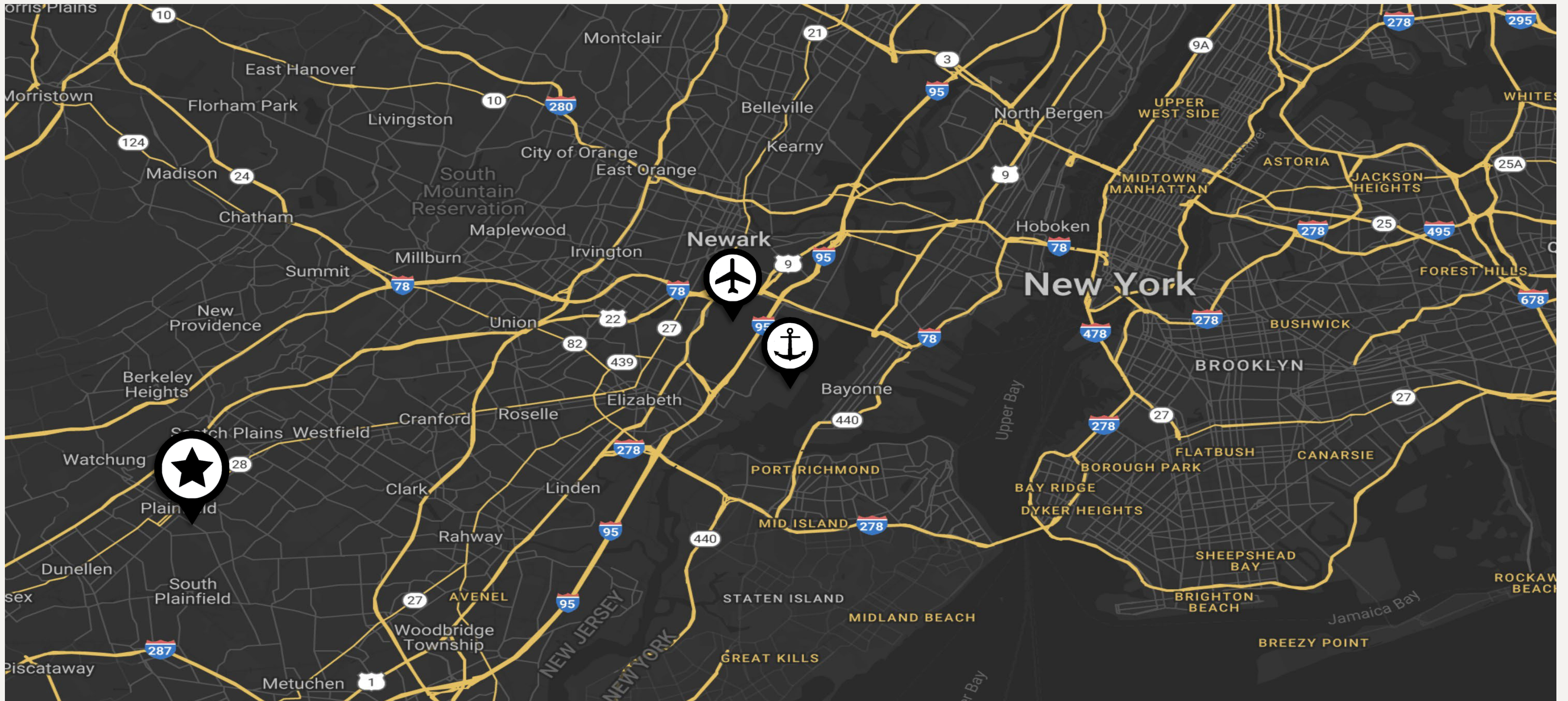
Zoned For Recreational Uses





Location Map

 900 North Avenue, Plainfield, NJ



LOCATION IN MAP

Proximity Highlights

- Access to the **Routes 22 & 28 & I-78**
- 1 Mile to **NJ Transit Train Station**
- 15 Miles to **Newark Liberty Airport**
- 20 Miles to **Port Elizabeth / Newark**
- **Proximity to New York Markets**





📍 900 North Avenue, Plainfield, NJ

The city of **Plainfield, NJ** is in close proximity to the ports with access to:

- **Newark Liberty Airport**
- **Port Elizabeth/Newark**
- Staten Island via the **Goethals Bridge**

With road access to:

- **Routes 22 & 28**
- **I-78 to the NJ Turnpike**
- **Garden State Parkway**
- **Industrial Workforce:**
 - 5-Mile Radius: **46,481**
 - 10-Mile Radius: **57,238**
 - 15 Mile Radius: **79,522**



For more information, please contact
our exclusive brokers:

Jordan Metz

Senior Vice President

973-493-0385

jordan@metzindustrial.com

Benito Abbate

Senior Associate

908-655-8331

ben@metzindustrial.com

James Friel

Sales Associate

908-305-9001

ben@metzindustrial.com



This document has been prepared by Bussel Realty Corp. based on public information. Bussel Realty Corp. makes no guarantees, representations or warranties of any kind, expressed or implied, regarding the information including, but not limited to, warranties of content, accuracy and reliability. Any interested party should undertake their own inquiries as to the accuracy of the information. Bussel Realty Corp. excludes unequivocally all inferred or implied terms, conditions and warranties arising out of this document and excludes all liability for loss and damages arising there from. This publication is the copyrighted property of Bussel Realty Corp. and/or its licensor(s).