

AREA DEMOGRAPHICS:

	1 mile	3 mile	5 mile
Population	33,252	225,750	600,386
Average HH Income	\$72,228	\$76,222	\$79,558
Daytime Population	27,891	75,269	298,907
Households	17,718	89,654	245,272

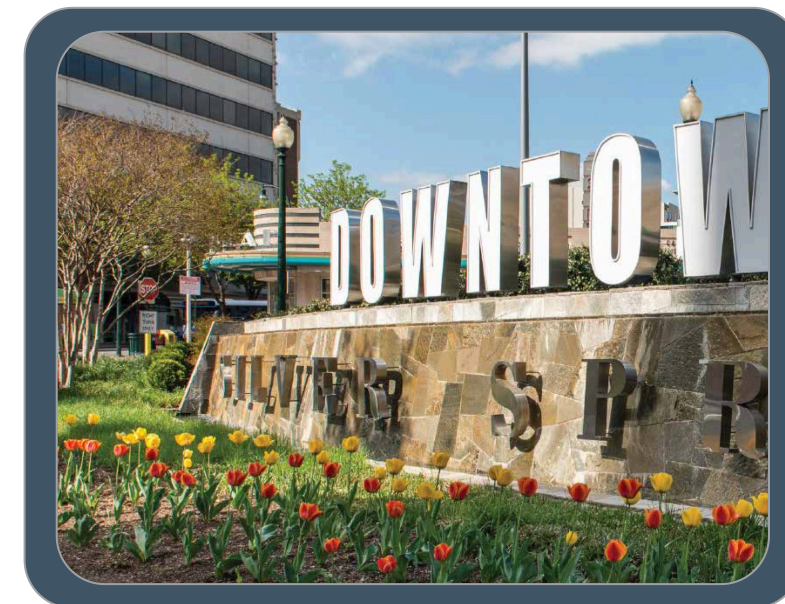
US CENSUS BUREAU, CENSUS 2010 SUMMARY FILE 1. ESRI FORECASTS FOR 2016 AND 2021 PROJECTIONS. ACTUAL DEMOGRAPHICS BASED ON 2016 FORECAST.

The information contained herein was furnished to us by sources we deem to be reliable, but no warranty or representation is made to the accuracy thereof. This offering is subject to correction or errors and omissions, change of price, prior to sale/lease or withdrawal from the market, without notice.

FOR MORE INFORMATION:

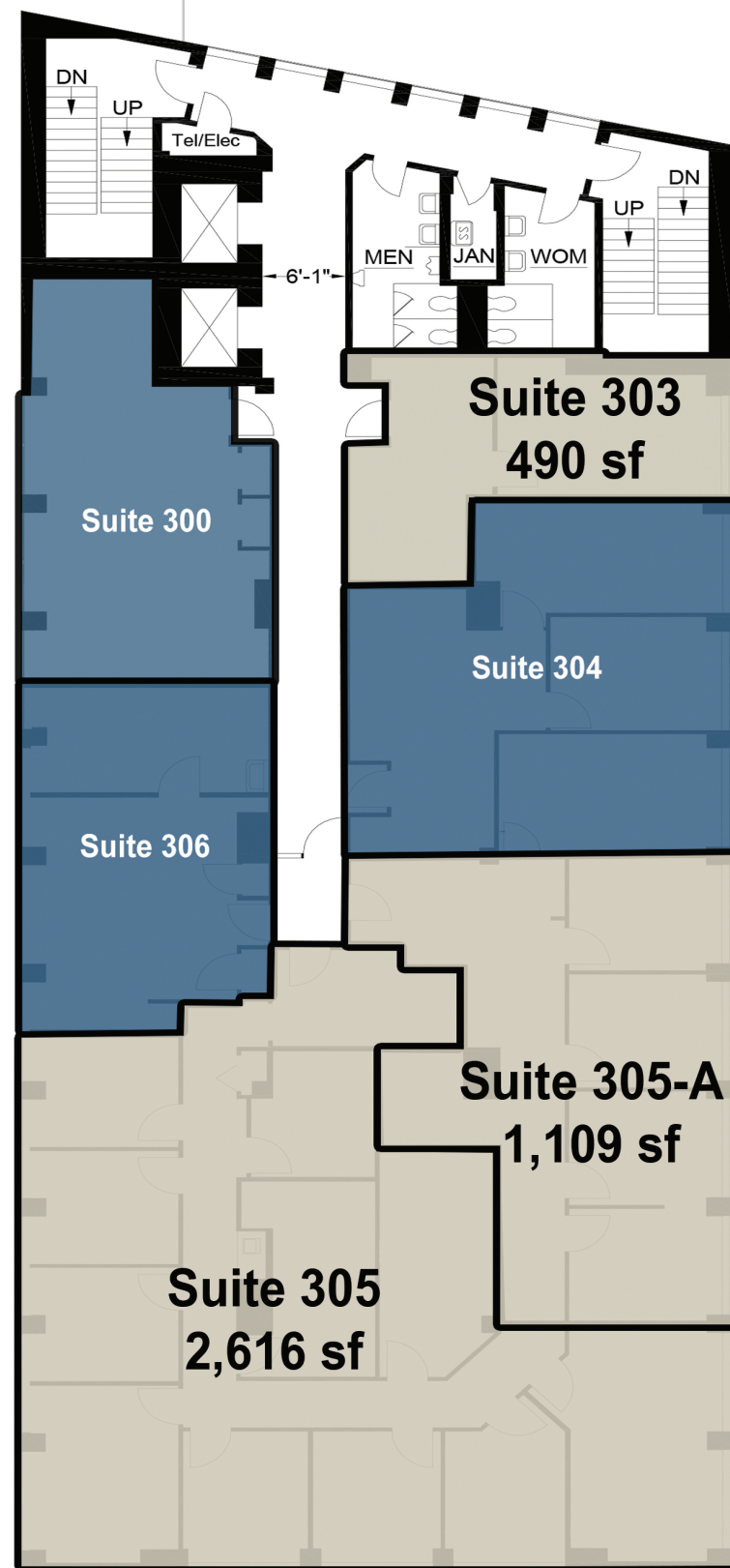
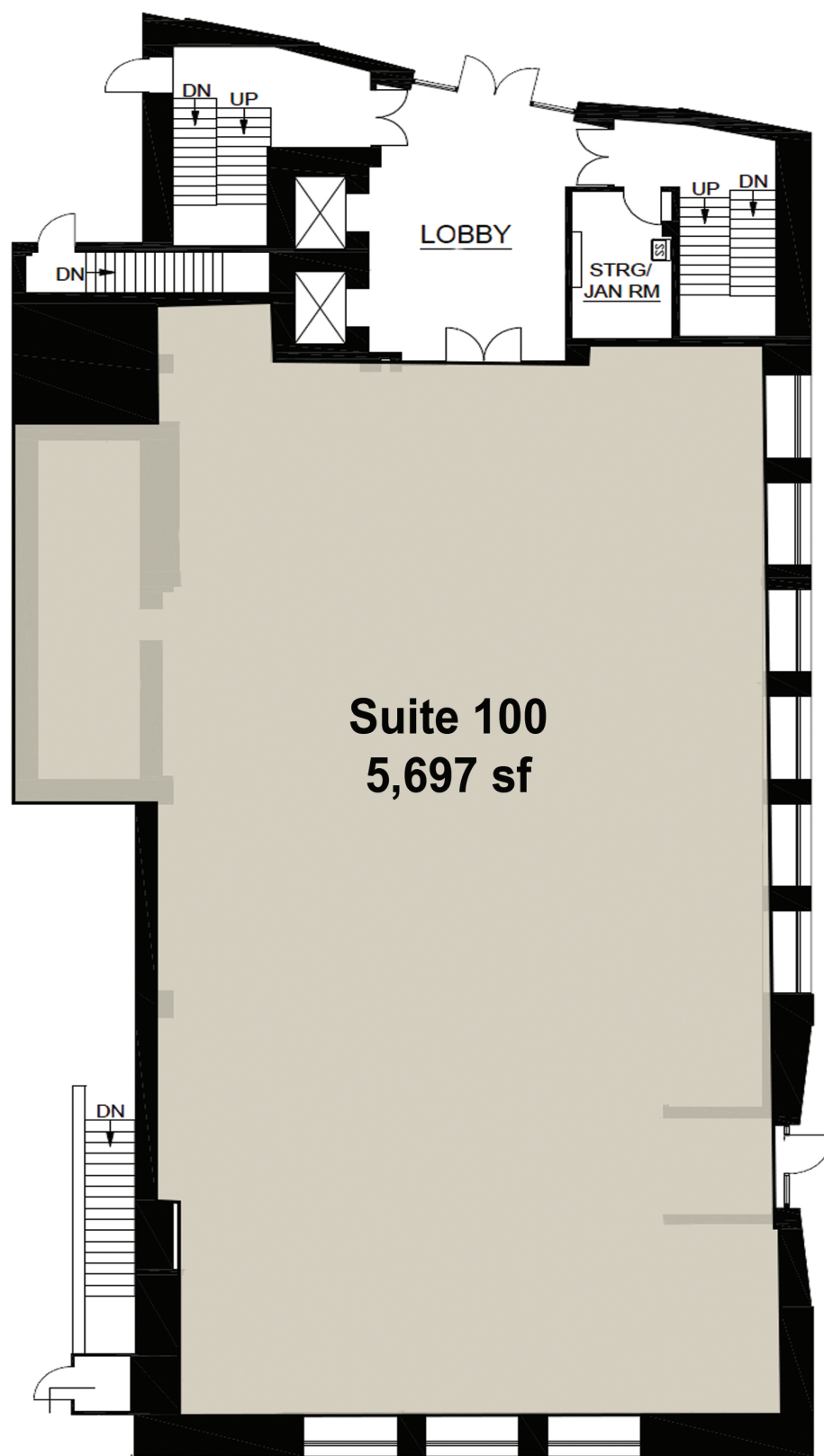
**Jeff Edelstein**  
 202.375.7946  
 jeff@roadsidellc.com

**Roadside Development LLC**  
 3939 Wisconsin Avenue, NW  
 Suite 100  
 Washington, DC 20016  
 www.roadsidedevelopment.com



SILVER SPRING

8700 Georgia Avenue has all the amenities the city offers in downtown Silver Spring. Located only two blocks from Route 29 and .03 miles from Metro's redline & MARC commuter rail, this location is convenient to everything!



LEASED

AVAILABLE

