

1100 Massachusetts Avenue

Cambridge, MA

10,097 SF of Sublease Space Available

FIRST CLASS BUILDING

IMMEDIATE OCCUPANCY



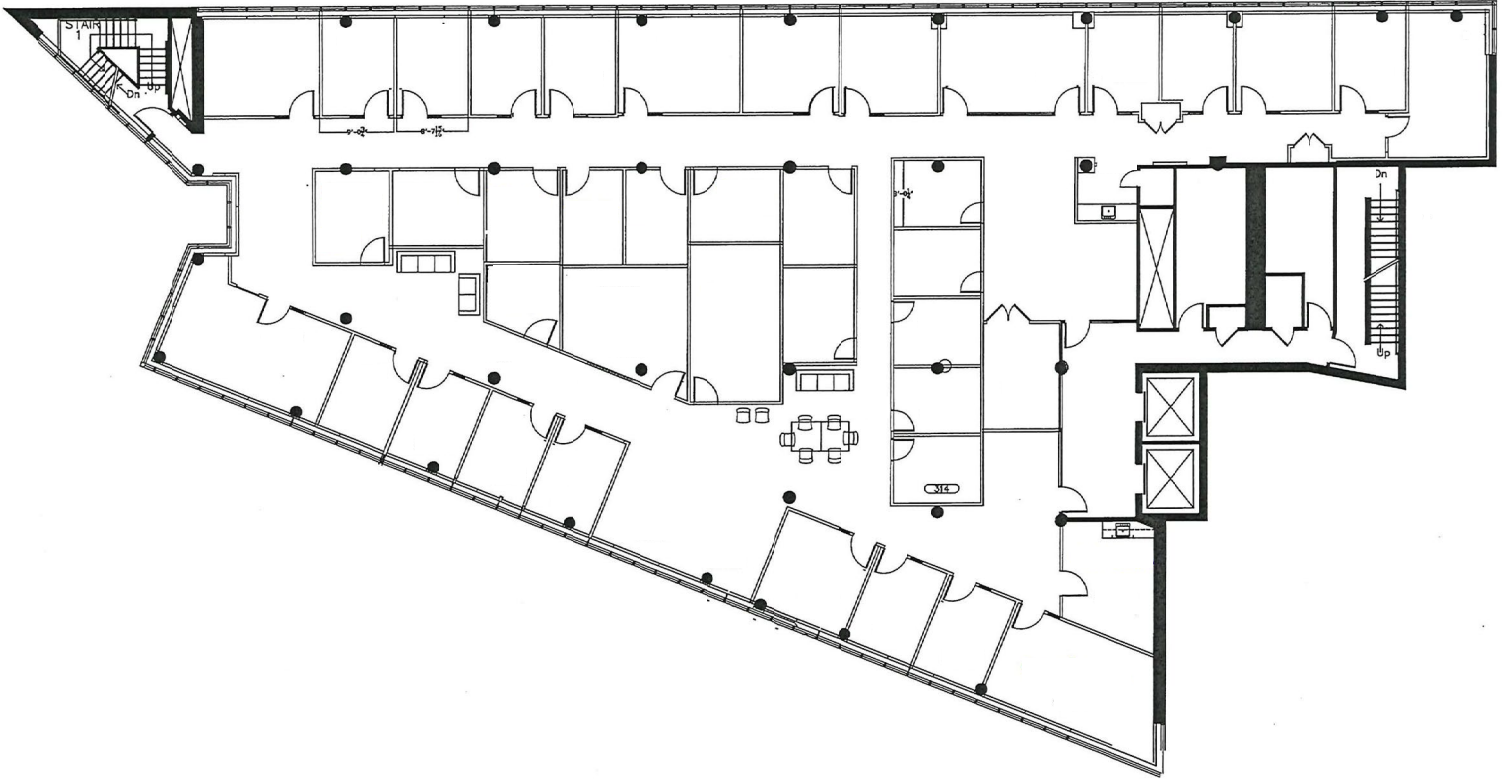
Space Features

- Kitchenette
- Private office layout
- Conference rooms
- Great window lines & natural light
- Newly renovated lobby & elevators
- On-site garage parking



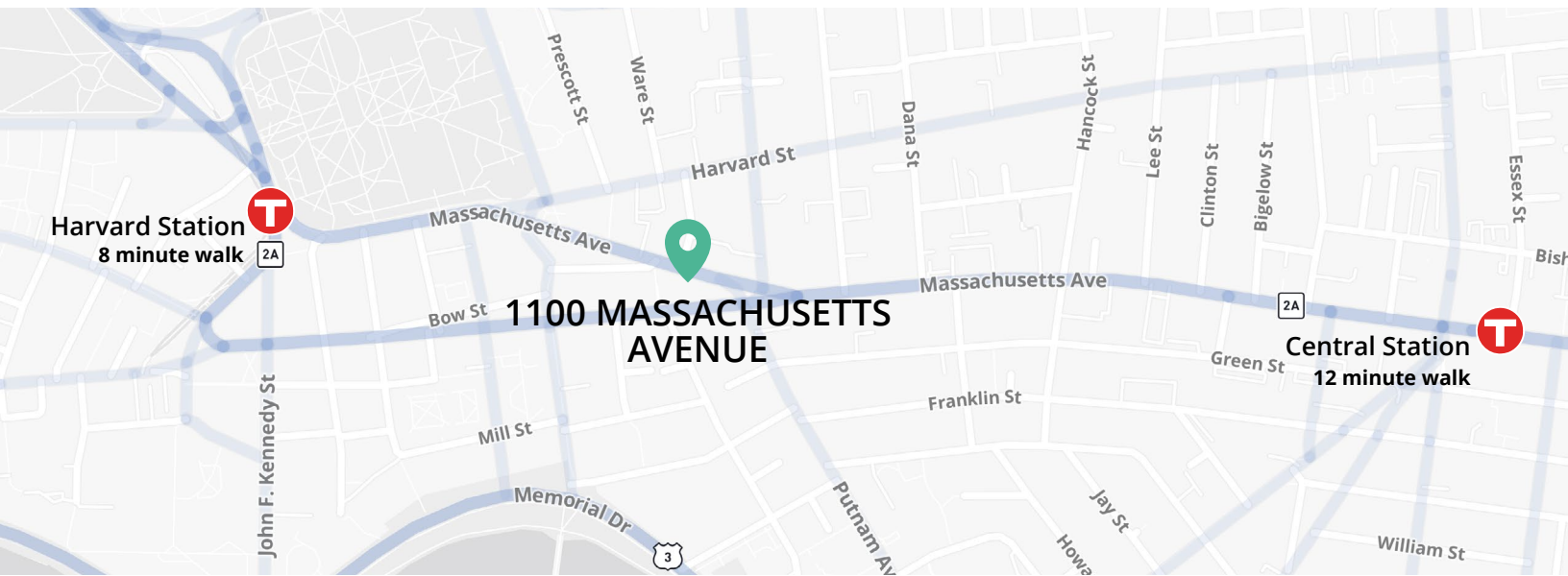
Floor 3 | 10,097 SF

TERM THROUGH 12/31/2030



Location

- Ideal location offering easy access to Harvard and Central Stations (MBTA Red Line)
- Walking distance to numerous restaurants, hotels, and retail amenities



**For more
information
please contact:**

Jay Driscoll, Principal
+1 617 250 7609
jay.driscoll@avisonyoung.com

200 State Street | Floor 15 | Boston, MA 02109

© 2025, Avison Young New England LLC. The information contained herein was obtained from sources which we deem reliable and, while thought to be correct, is not guaranteed by Avison Young and as such, cannot be warranted nor form any part of any future contract.

**AVISON
YOUNG**