

**FOR LEASE**

**19,305 SF WAREHOUSE ON ± 2.0 ACRES OUTDOOR STORAGE | AUBURNDALE, FL**

**220 RECKER HWY, AUBURNDALE, FL 33823**



**ROBBIE LOBER**, Managing Member

+1(727)-999-1806

Robbie@LoberRealEstate.com

**DEVIN BEELER**, Senior Associate

+1(727)-709-2179

Devin@LoberRealEstate.com



**FOR LEASE**

**19,305 SF WAREHOUSE ON ± 2.0 ACRES OUTDOOR STORAGE | AUBURNDALE, FL**

**LOBER**  
REAL ESTATE

220 RECKER HWY, AUBURNDALE, FL 33823

## PROPERTY OVERVIEW



**19,305 SF**  
BUILDING SIZE



**±2.00 AC**  
USABLE ACRES



PROPERTY DETAILS

### LOCATION

**ADDRESS** 220 Recker Hwy, Auburndale, FL 33823  
Map Links [Here](#)

**SUBMARKET/COUNTY** Lakeland / Polk

### BUILDING

**BUILDING SIZE** 19,305 SF Free Standing Warehouse  
• 5,436 SF Newly Renovated Two-Storey Office  
• 13,869 SF Warehouse

**LOADING** Two (2) Oversized grade-level doors (14'x16')  
One (1) dock high door (12'x12')  
One (1) van high door (12'x12')

**CLEAR HEIGHT** 22 FT

**POWER** 3 Phase | 400 Amps | 480 Volts

**FEATURES** Fenced, Lit, and Secured Outdoor Storage

### SITE

**LOT SIZE** ± 2.00 Acres Fenced, Gated, Lit and Secured

**FRONTAGE** 480 FT via SR 655 (Recker Hwy)

**ACCESS** Two (2) Gated Ingress / Egress Points

**VISIBILITY** Signage and exposure on Recker Hwy (±16,500 AADT)  
and Thornhill Rd (±8,000 AADT)

### ZONING & USE

**ZONING** BPC (Business Park Center)

**PERMITTED USES** Manufacturing, Distribution, Outdoor Storage, Fleet Parking, Truck Repairs, Logistics, Contractor Yard Uses.- See additional uses [here](#).

### AVAILABILITY

**DATE AVAILABLE** **NOW!**

**LEASE TERMS** Call Broker for Pricing / Details

**ROBBIE LOBER**, Managing Member

+1(727)-999-1806

✉ [Robbie@LoberRealEstate.com](mailto:Robbie@LoberRealEstate.com)

**DEVIN BEELER**, Senior Associate

+1(727)-709-2179

✉ [Devin@LoberRealEstate.com](mailto:Devin@LoberRealEstate.com)

RE

**FOR LEASE**

**19,305 SF WAREHOUSE ON ± 2.0 ACRES OUTDOOR STORAGE | AUBURNDALE, FL**

**LOBER**  
REAL ESTATE

220 RECKER HWY, AUBURNDALE, FL 33823

## PROPERTY FEATURES



**ROBBIE LOBER**, Managing Member

+1(727)-999-1806

Robbie@LoberRealEstate.com

**DEVIN BEELER**, Senior Associate

+1(727)-709-2179

Devin@LoberRealEstate.com

**FOR LEASE**

**19,305 SF WAREHOUSE ON ± 2.0 ACRES OUTDOOR STORAGE | AUBURNDALE, FL**

**LOBER**  
REAL ESTATE

220 RECKER HWY, AUBURNDALE, FL 33823

## PROPERTY PHOTOS



**ROBBIE LOBER**, Managing Member

+1(727)-999-1806

Robbie@LoberRealEstate.com

**DEVIN BEELER**, Senior Associate

+1(727)-709-2179

Devin@LoberRealEstate.com

RE

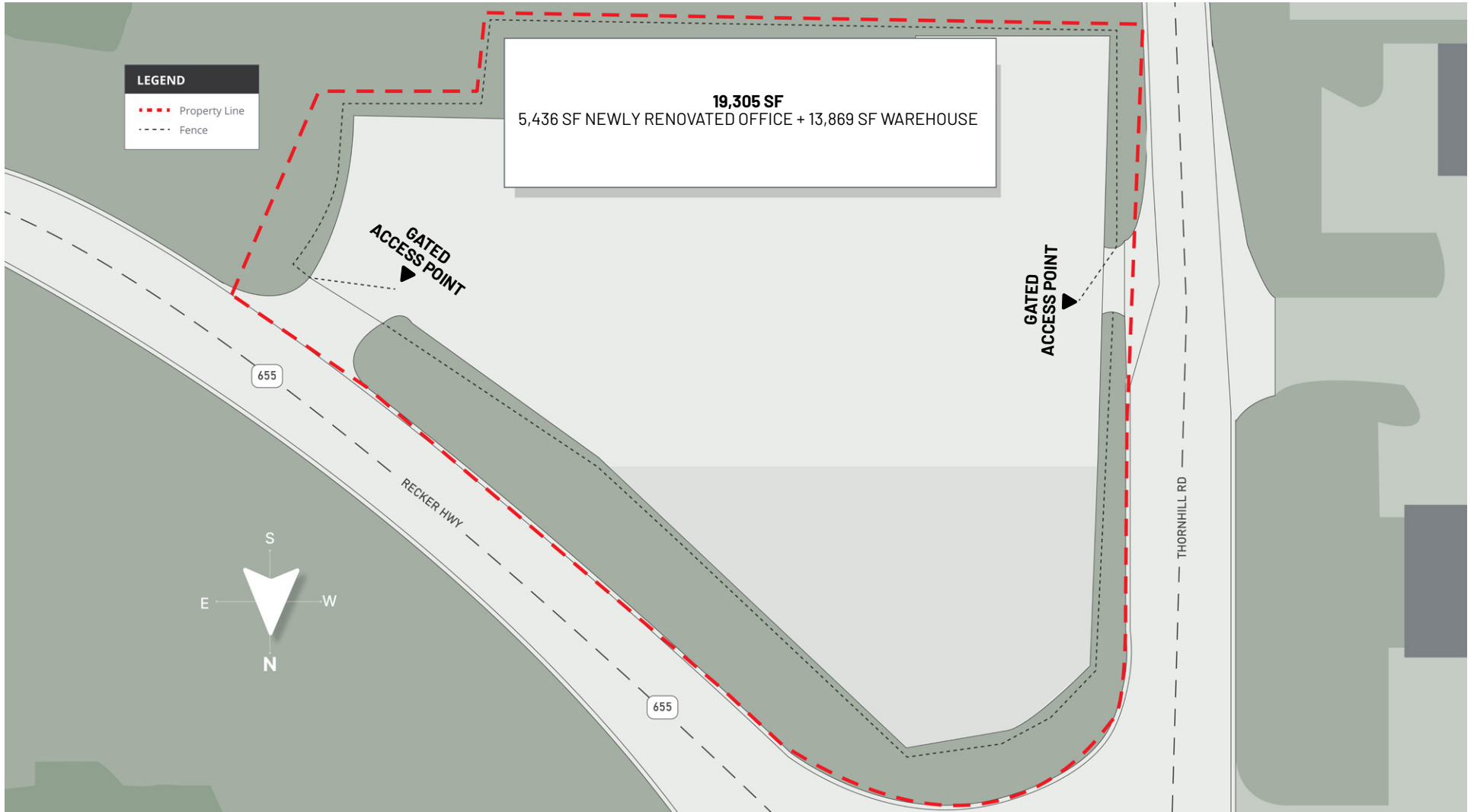
**FOR LEASE**

**19,305 SF WAREHOUSE ON ± 2.0 ACRES OUTDOOR STORAGE | AUBURNDALE, FL**

**LOBER**  
REAL ESTATE

220 RECKER HWY, AUBURNDALE, FL 33823

## SITE PLAN



**ROBBIE LOBER**, Managing Member

+1(727)-999-1806

Robbie@LoberRealEstate.com

**DEVIN BEELER**, Senior Associate

+1(727)-709-2179

Devin@LoberRealEstate.com

FOR LEASE

19,305 SF WAREHOUSE ON ± 2.0 ACRES OUTDOOR STORAGE | AUBURNDALE, FL

LOBER  
REAL ESTATE

220 RECKER HWY, AUBURNDALE, FL 33823

## NEIGHBORING TENANTS



ROBBIE LOBER, Managing Member

+1(727)-999-1806

Robbie@LoberRealEstate.com

DEVIN BEELER, Senior Associate

+1(727)-709-2179

Devin@LoberRealEstate.com

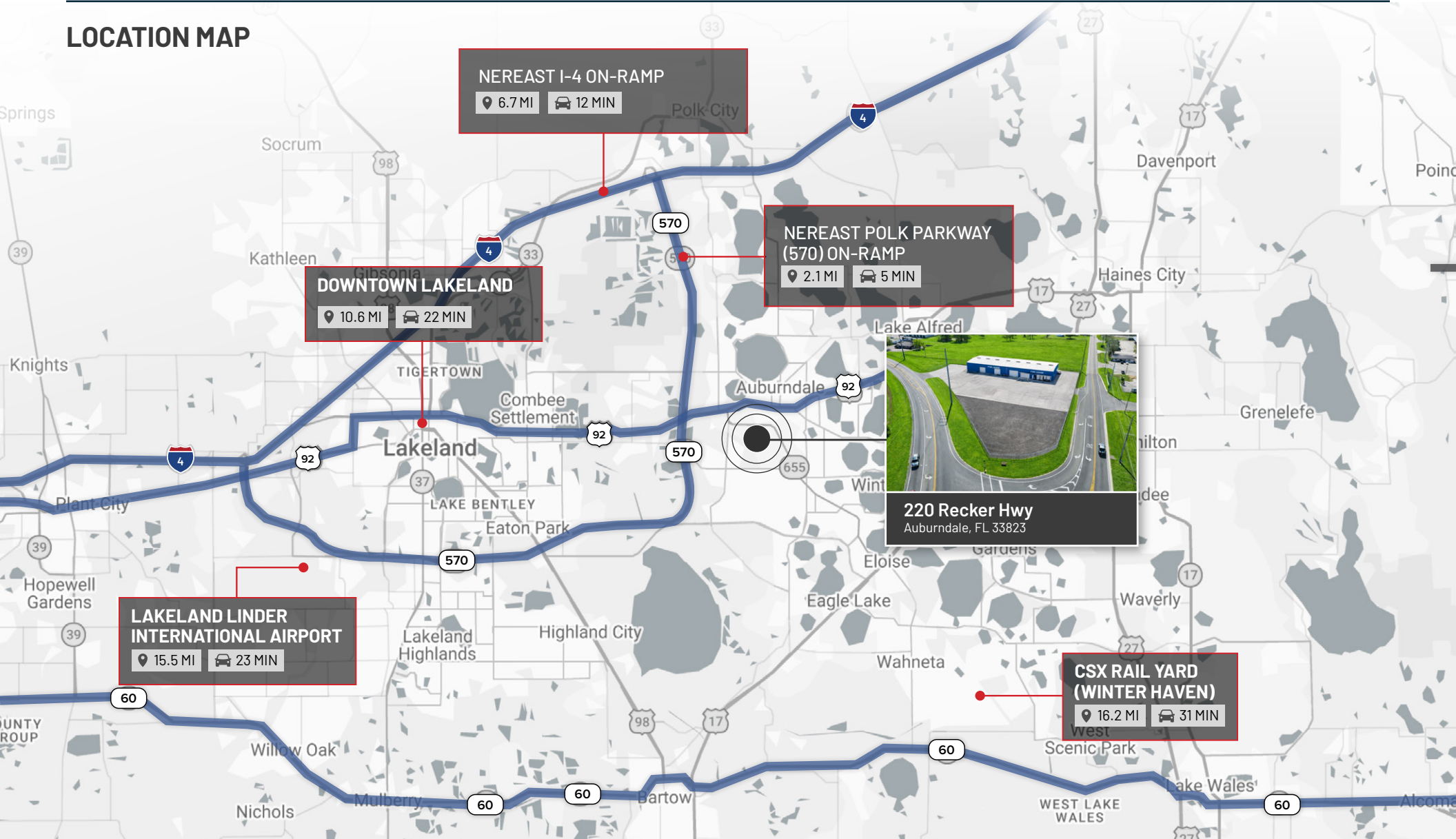
**FOR LEASE**

**19,305 SF WAREHOUSE ON ± 2.0 ACRES OUTDOOR STORAGE | AUBURNDALE, FL**

**LOBER**  
REAL ESTATE

220 RECKER HWY, AUBURNDALE, FL 33823

## LOCATION MAP



**ROBBIE LOBER**, Managing Member

+1(727)-999-1806

Robbie@LoberRealEstate.com

**DEVIN BEELER**, Senior Associate

+1(727)-709-2179

Devin@LoberRealEstate.com

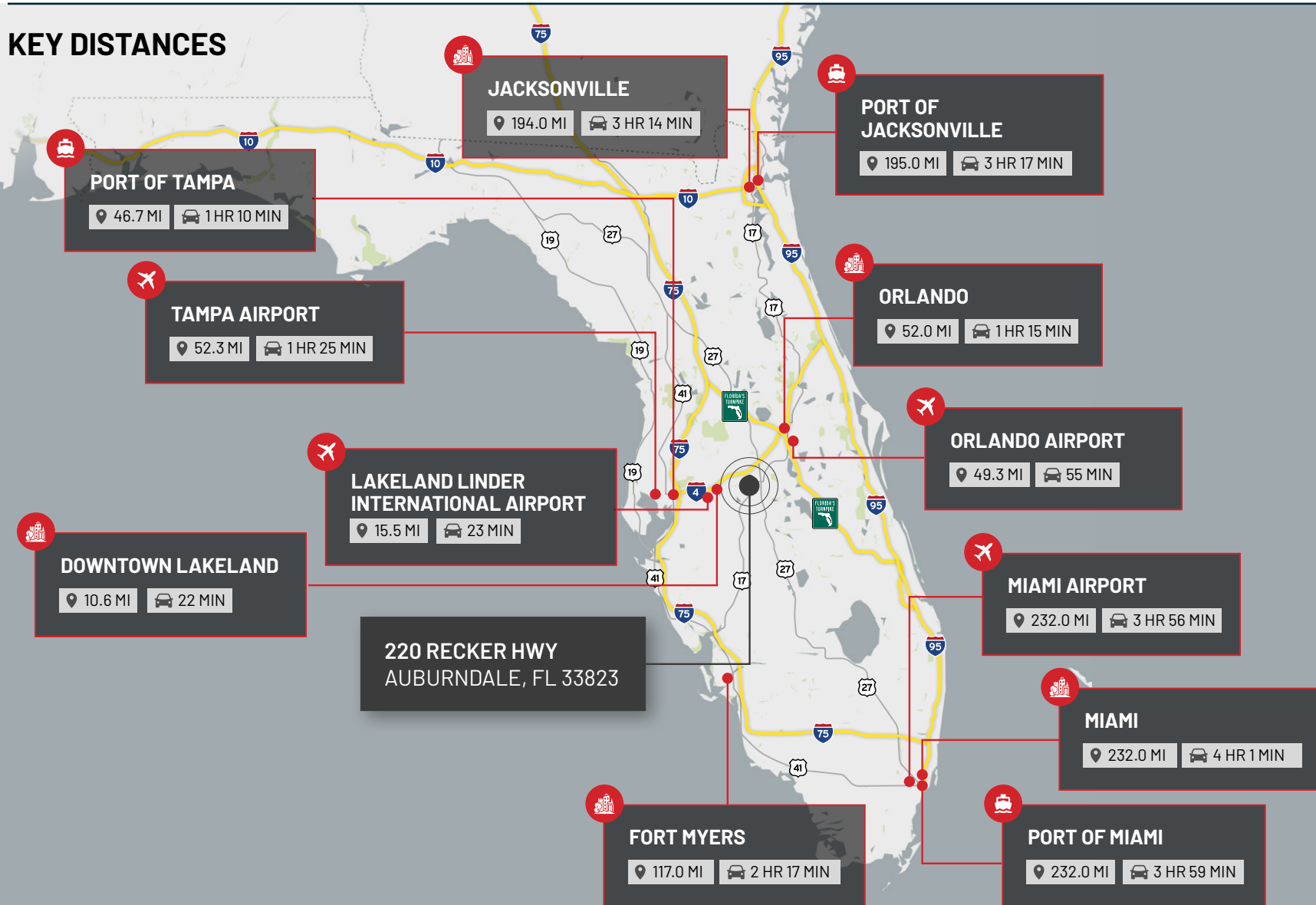
**FOR LEASE**

**19,305 SF WAREHOUSE ON ± 2.0 ACRES OUTDOOR STORAGE | AUBURNDALE, FL**

**LOBER**  
REAL ESTATE

220 RECKER HWY, AUBURNDALE, FL 33823

### KEY DISTANCES



**ROBBIE LOBER**, Managing Member

+1(727)-999-1806

Robbie@LoberRealEstate.com

**DEVIN BEELER**, Senior Associate

+1(727)-709-2179

Devin@LoberRealEstate.com

FOR LEASE

# 19,305 SF WAREHOUSE ON ± 2.0 ACRES OUTDOOR STORAGE | AUBURNDALE, FL

220 Recker Hwy, Auburndale, FL 33823

**ROBBIE LOBER**, Managing Member

+1(727)-999-1806  
Robbie@LoberRealEstate.com

**DEVIN BEELER**, Senior Associate

+1(727)-709-2179  
Devin@LoberRealEstate.com

**2963 Gulf To Bay Blvd**  
Suite 275  
Clearwater, FL 33759

