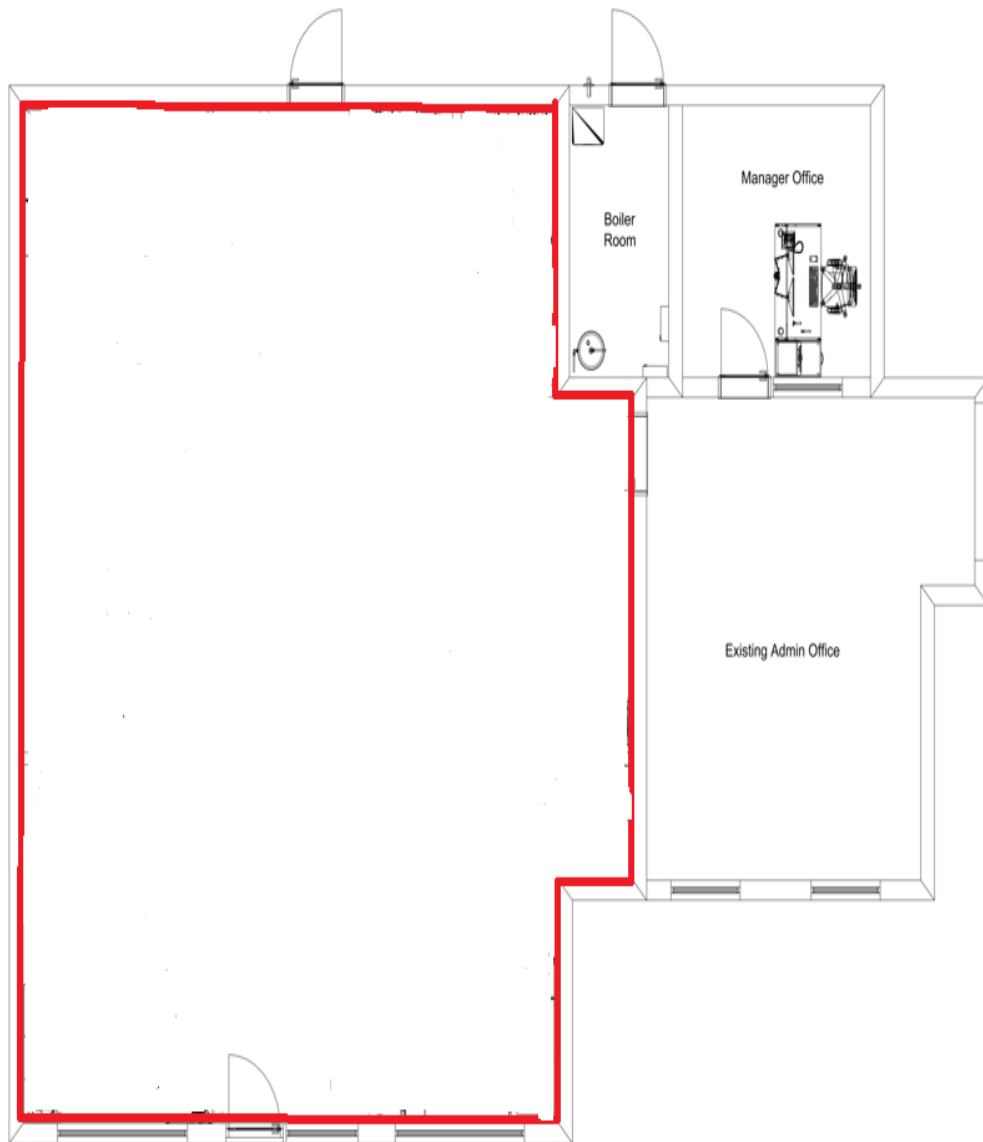


# PARKSIDE MEDICAL CENTRE UNIT, WHALLEY DRIVE, MILTON KEYNES, MK3 6EN



**APPROX 1,000 SQ FT (To be confirmed) Use subject to planning, a single-storey open space retail unit AVAILABLE**

# PARKSIDE MEDICAL CENTRE, WHALLEY DRIVE, MILTON KEYNES, MK3 6EN



## Location:

Located in the Milton Keynes South ward of Bletchley Park, adjacent to the Parkside GP Medical Centre in Bletchley, built approximately 15 years ago and has not previously been occupied, so use will be subject to planning. A further Community Health Centre is located next door with a school close by.

## Description:

A large open space shell ground floor area, to be fitted out by incoming tenant. There is a front entrance with large glass windows to the front and a back door, leading out to further on site parking. Single storey open space retail unit available.

There is ample parking at the front, with over 30 spaces available and Parkside Medical Centre located directly next door.

## Accommodation:

The unit comprises a ground floor area totalling approx 1,000 sq.ft. (To be confirmed)

