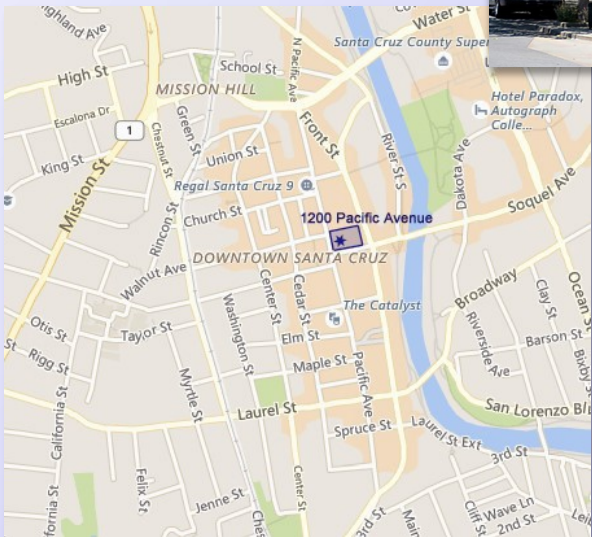


# AVAILABLE FOR LEASE

## 1200 PACIFIC AVE, SANTA CRUZ

**CLASS A  
OFFICE SPACE  
1 BEATIFUL SUITE  
FOR LEASE  
DOWNTOWN  
SANTA CRUZ**



### 1200 PACIFIC AVENUE, DOWNTOWN SUITES 210

- ONE OF THE HIGHEST QUALITY OFFICE SPACES IN DOWNTOWN SANTA CRUZ
- EASY ACCESS TO ALL DOWNTOWN AMENITIES
- DIRECT CONNECTION TO PARKING STRUCTURE
- SHOWER FACILITIES
- EASY ACCESS TO HIGHWAYS 1 and 17
- LOCATED IN THE HEART OF THE DOWNTOWN BUSINESS CORRIDOR

• SUITE 210: ± 4,255 SF  
\$1.65 SF/MO NNN (\$.66)

**JIM WISEMAN**  
DRE #01104278

**831-818-5454**  
jwiseman@sheldonwiseman.com

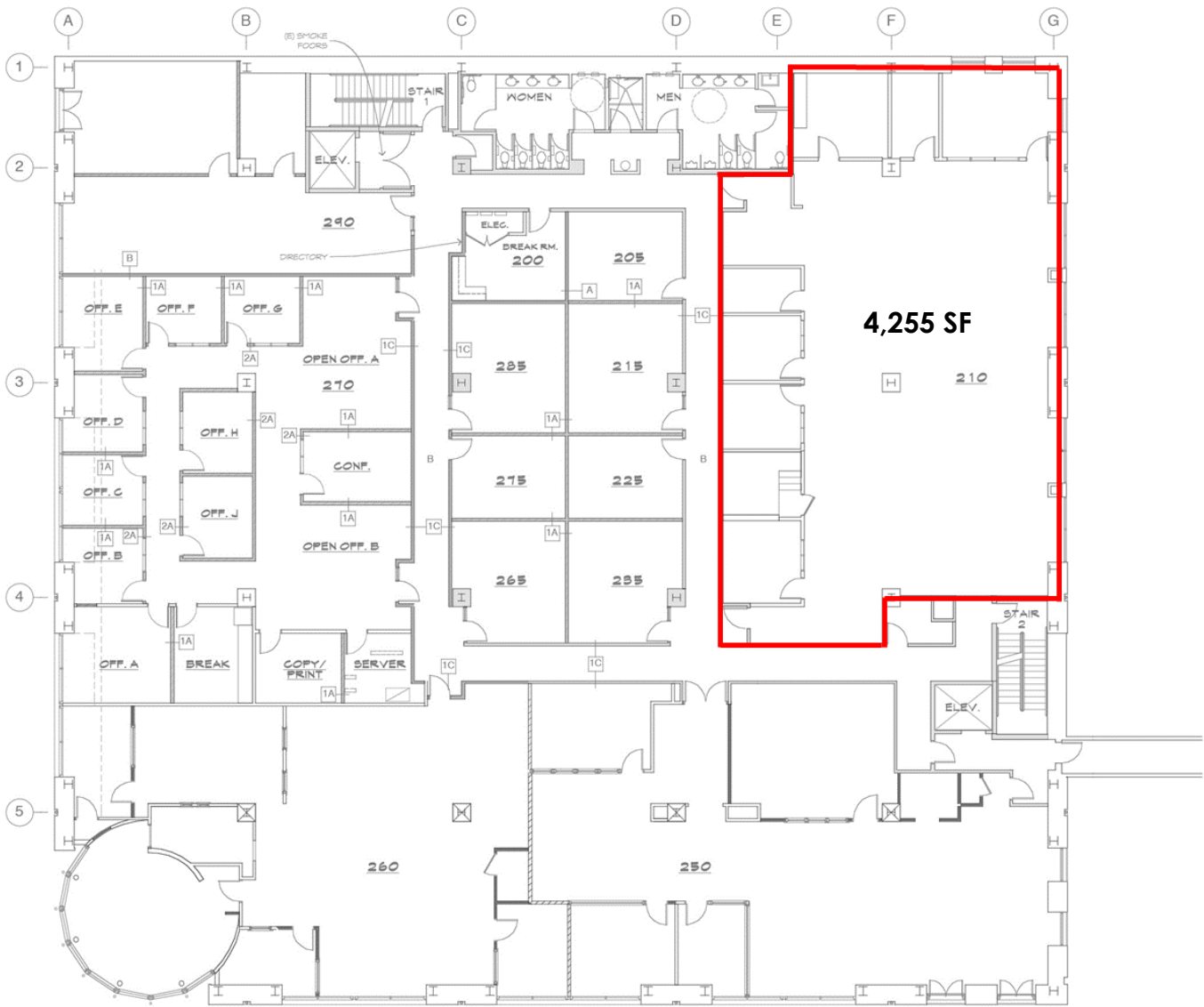


*While the information contained herein is deemed reliable, we cannot guarantee its accuracy. All information should be verified.*

1200 Pacific Avenue, Suite 390 ■ Santa Cruz, CA 95060  
Tel: 831 • 454 • 9400 ■ Fax: 831 • 459 • 7988 ■ [www.sheldonwiseman.com](http://www.sheldonwiseman.com)

INTEGRITY ■ SERVICE ■ RESULTS

# FLOOR PLAN — SUITE 210



PROPOSED SECOND FLOOR PLAN  
SCALE 1/8" = 1'-0"

- LEGEND**
- (E) WALLS TO REMAIN
  - (N) 1 HR FIRE RATED WALLS
  - (E) 1 HR WALLS TO REMAIN
  - (E) WALLS REMOVED
  - (N) PARTITION WALLS

DENNIS DIEGO  
ARCHITECT  
AIA  
1127 KING STREET  
SANTA CRUZ, CA  
95060  
831 459 7566  
FAX 459 7571

**SUITE 210**

**± 4,255 SF**

*While the information contained herein is deemed reliable, we cannot guarantee its accuracy. All information should be verified.*

**INTEGRITY ■ SERVICE ■ RESULTS**

