



Scotts Village Shopping Center

227 – 259 MT. HERMON ROAD
SCOTTS VALLEY | CA



FOR INFORMATION, CONTACT:

EMILY MURTHA
Senior Leasing Manager
Direct: 415-277-6905
emurtha@crosspointrealty.com
CA DRE #01891284

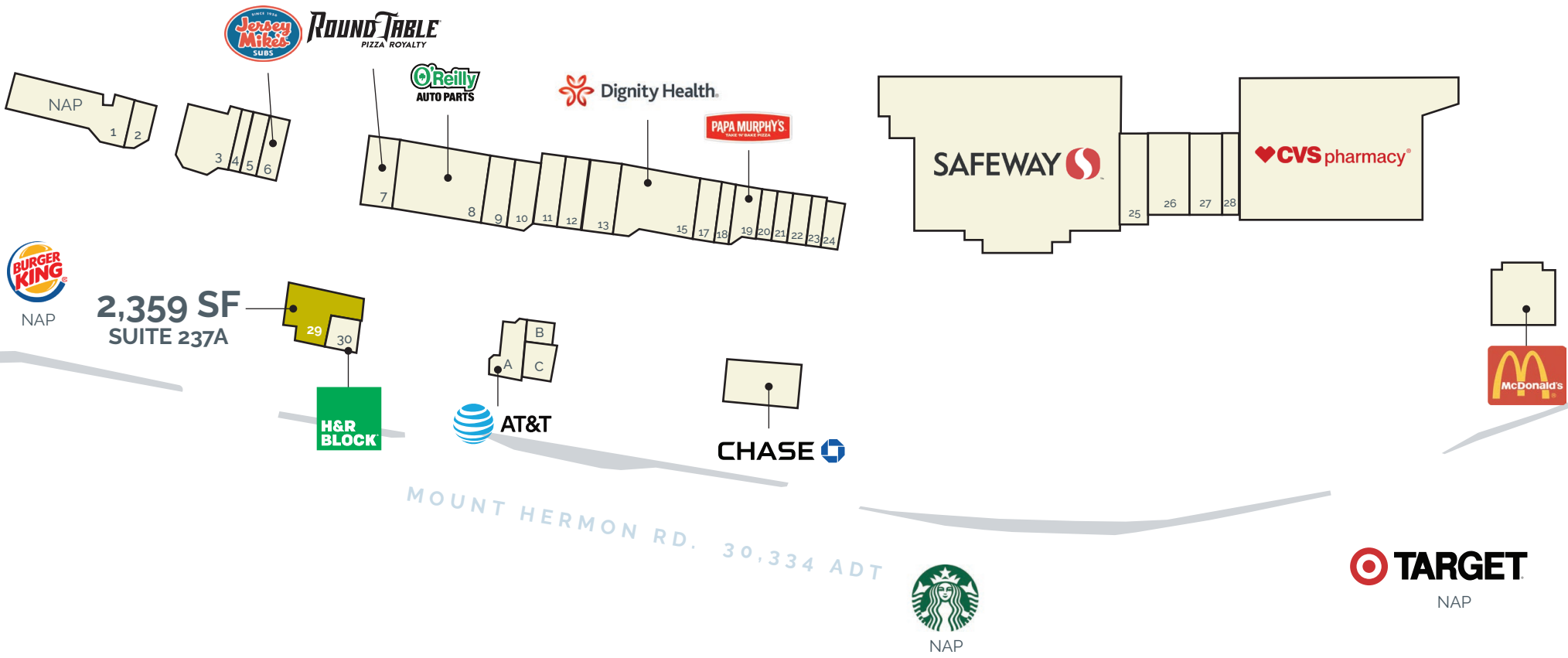
CARTER HEMMING
chemming@crosspointrealty.com
CA DRE #01123464

KATHY DEOCHOA
kdeochoa@crosspointrealty.com
CA DRE #01871554

SUITE	SF	RENT	NNN
237 A	2,359	Inquire	\$10.16

The largest and most central retail hub in Scotts Valley, along the city's main commercial corridor.





Scotts Village Shopping Center

SUITE	TENANT	SF
1 - 231A	Skip's Tire & Auto Center (NAP)	3,780
2 - 231C	Subway (NAP)	950
3 - 235G	Otoro Sushi	2,522
4 - 235E	Tim's Chinese	980
5 - 235C	Taqueria Los Gallos	1,210
6 - 235A	Jersey Mikes	1,206
7 - 245A	Round Table Pizza	2,415
8 - 245B	O'Reilly Auto Parts	6,575
9 - 245D	Exhale Day Spa	1,752
10 - 245E	Bay Area Floors	1,235
11 - 245G	Art Cleaners	1,400
12 - 245H	Kao Sook Thai Cuisine	1,688
13 - 245J	Mathnasium	2,100
15 - 245L	Dignity Health	5,000
17 - 245Q	Mandarin Magic Spa	1,500
18 - 245R	Tina's Hair Salon	900
19 - 245S	Papa Murphy's Pizza	1,350
20 - 245U	Bella Nail	827
21 - 245	The Point Ice Creamery	827
22 - 245W	Diamond Wireless/Verizon	850
23 - 245Y	Greene Jewelers	700
24 - 245Z	The Point Market	852
25 - 255A	Earthwise Pets	2,741
26 - 255B	SV Children's Center	3,200
27 - 255C	Bay Federal Credit Union	2,345
28 - 255D	Insight Eye Care	1,600
29 - 237A	AVAILABLE	2,359
30 - 237B	H & R Block	1,441
243A	AT&T	1,500
243B & C	Wings School of Dance	1,654



SUITE 237A

SIGNAGE AVAILABLE

AVAILABLE
SUITE 29 - 237A
2,359 SF



SIGNAGE AVAILABLE

YOUR NAME HERE





SCOTTS VALLEY RECREATION
SKATE PARK, SOCCER,
DOG PARK

TARGET
T **CHIPOTLE** **TOGO'S**
MEXICAN GRILL GREAT SANDWICHES



NOB HILL FOODS **ACE Hardware**
Walgreens **P**
House of Bagels **KUMON**

Scotts Village
Shopping Center

CYCLE SPORT
BatteriesPlus



LOCATION MAP
**Scotts Village
Shopping Center**

TO SAN JOSE

TO SANTA CRUZ

PRINCIPAL TRADE AREA

Highlights

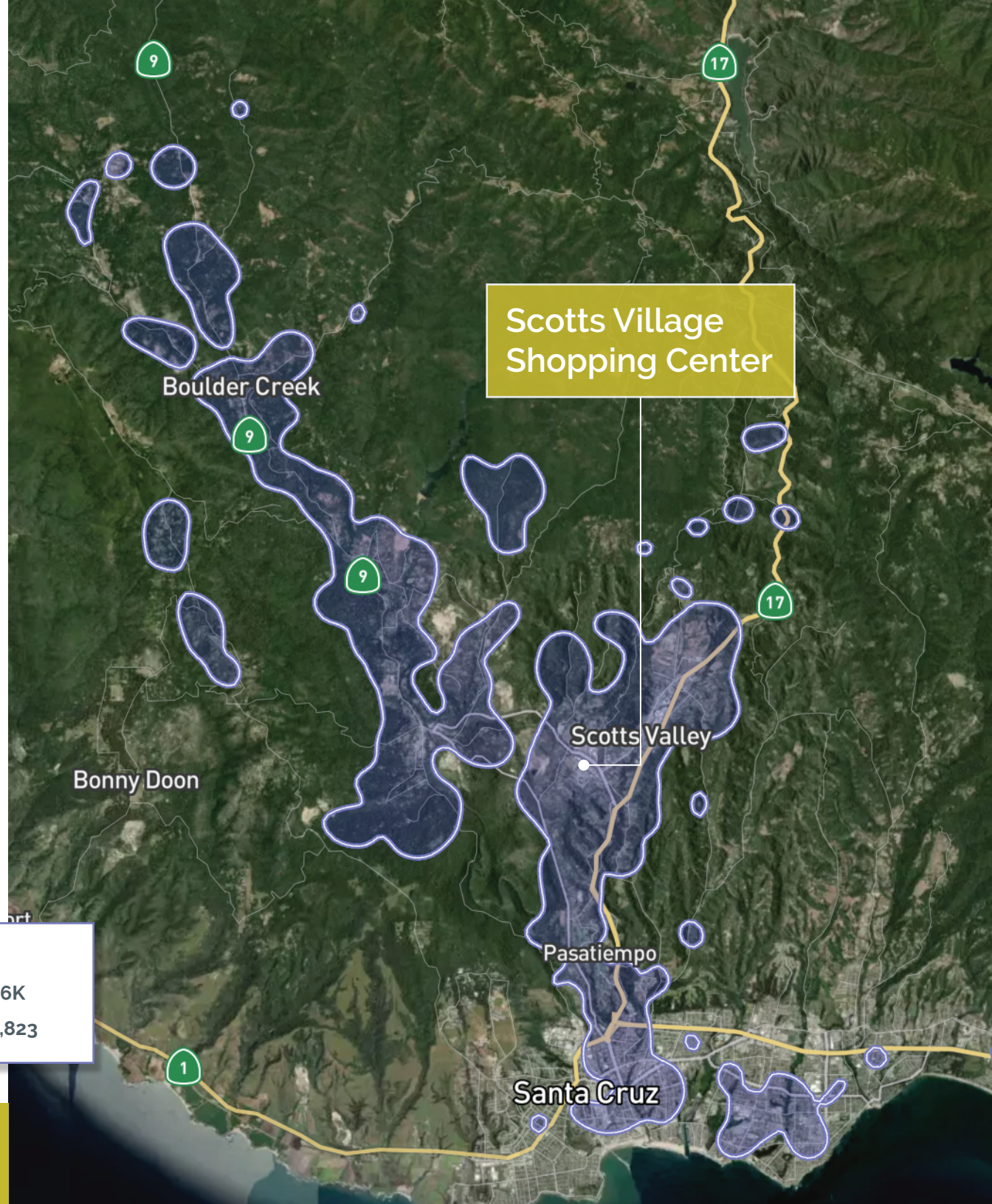
Scotts Village Shopping Center is one of the primary retail hubs in Scotts Valley, located on Mt. Hermon Road in the heart of the city's commercial district. It serves as a central stop for grocery shopping, everyday services, dining, and specialty shops, making it a convenient destination for both locals and visitors.

- One-stop neighborhood shopping hub for South Coast residents, including Scotts Valley, Felton, Boulder Creek and Santa Cruz communities.
- The center won a local Chamber of Commerce beautification award after recent remodeling efforts

PRINCIPAL TRADE AREA

AVG. HH INCOME \$146K

POPULATION (10 MILE) 183,823





CROSSPOINT REALTY SERVICES, INC.
415-288-6888
www.crosspointrealty.com

FOR INFORMATION, CONTACT:

EMILY MURTHA

Senior Leasing Manager
Direct: 415-277-6905
emurtha@crosspointrealty.com
CA DRE #01891284

CARTER HEMMING

chemming@crosspointrealty.com
CA DRE #01123464

KATHY DEOCHOA

kdeochoa@crosspointrealty.com
CA DRE #01871554