

FOR LEASE | COMMERCENTER ANAHEIM | 2,050 SF

1525 N. ENDEAVOR PL., SUITE D, ANAHEIM



PROPERTY FEATURES

- High Image Multi-Tenant Business Park
- ±500 SF of Office Space
- 1 Ground Level Loading Door
- 16' Minimum Warehouse Clear Height
- Fire Sprinklered
- 2:1 Parking Ratio
- Immediate Freeway Access to Riverside (91) & Orange (57) Freeways



MICHAEL ZEHNER SENIOR VICE PRESIDENT

714.935.2328
McZehner@voitco.com
Lic. #01917963

REED RUTTER ASSOCIATE

949.933.5744
RRutter@voitco.com
Lic. #02153762

Voit
REAL ESTATE SERVICES

**THE ZEHNER
DAVENPORT
INDUSTRIAL GROUP**

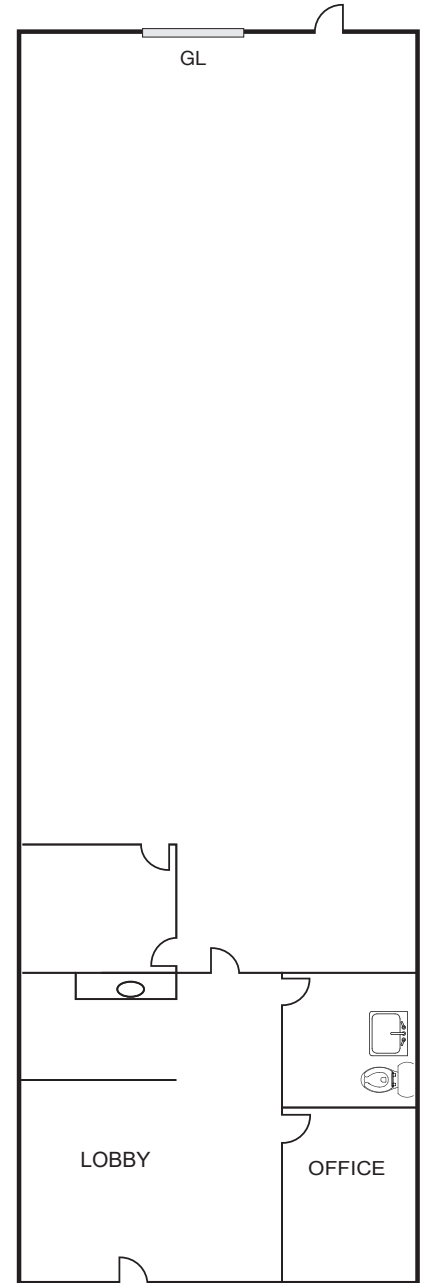
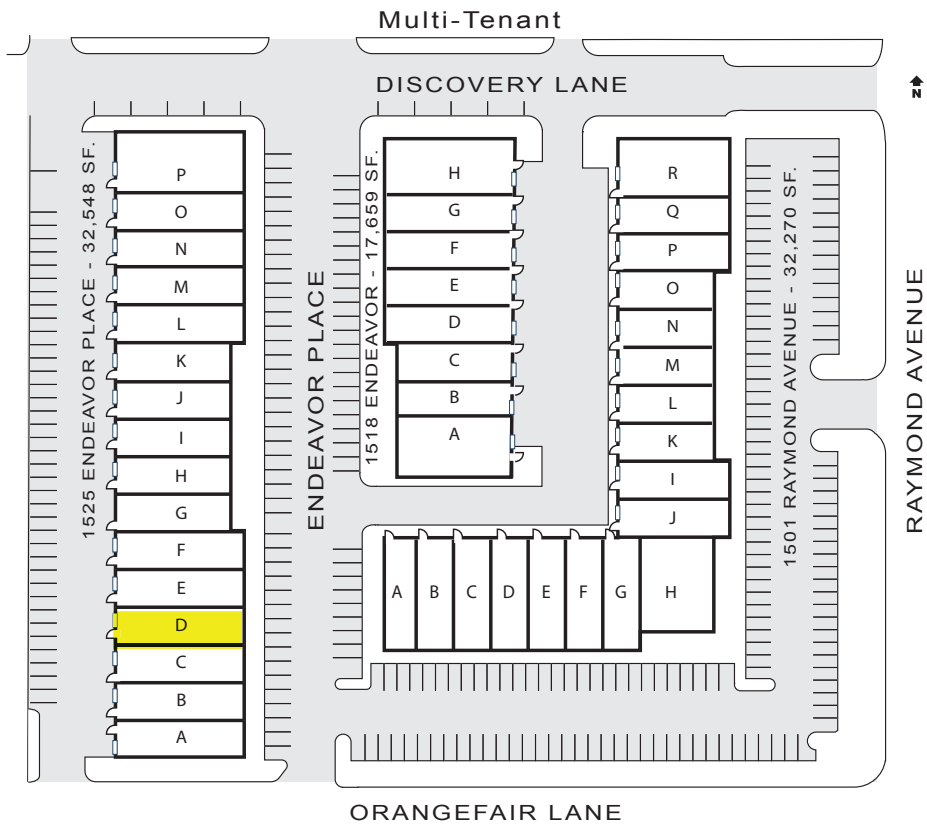
2020 Main Street, Suite 100 | Irvine, California 92614 | (949) 263-5303 | (949) 261-9092 FAX | Lic #01991785 | www.VoitCo.com

The information contained herein has been obtained from sources we deem reliable. While we have no reason to doubt its accuracy, we do not guarantee it. Licensed as Real Estate Salespersons by the DRE.
©2023 Voit Real Estate Services, Inc. All Rights Reserved. License #01991785.

FOR LEASE | COMMERCENTER ANAHEIM | 2,050 SF

1525 N. ENDEAVOR PL., SUITE D, ANAHEIM

FLOOR PLAN



MICHAEL ZEHNER
SENIOR VICE PRESIDENT
 714.935.2328
 McZehner@voitco.com
 Lic. #01917963

REED RUTTER
ASSOCIATE
 949.933.5744
 RRutter@voitco.com
 Lic. #02153762

Voit
 REAL ESTATE SERVICES

**THE ZEHNER
 DAVENPORT**
 INDUSTRIAL GROUP

2020 Main Street, Suite 100 | Irvine, California 92614 | (949) 263-5303 | (949) 261-9092 FAX | Lic #01991785 | www.VoitCo.com

The information contained herein has been obtained from sources we deem reliable. While we have no reason to doubt its accuracy, we do not guarantee it. Licensed as Real Estate Salespersons by the DRE.
 ©2023 Voit Real Estate Services, Inc. All Rights Reserved. License #01991785.