



For Lease

**20195 Stevens Creek Blvd,
Cupertino, CA 95014**

- Excellent Glass Line - All Suites
- Exclusive Private Parking
- Professional Security Patrol
- Top Tier Professional Vendor Management
- Professional Office Environment
- Located in the heart of Cupertino Business Market
- Walk Score ®: 79 (Very Walkable)
- Transit Score ®: 47 (Some Transit)
- From \$3.95 Full Service

Available Suites

**Suite 100 - 4,709 RSF-
Available Now**

**Suite 130 - 2,364 RSF-
Available October 01, 2022**



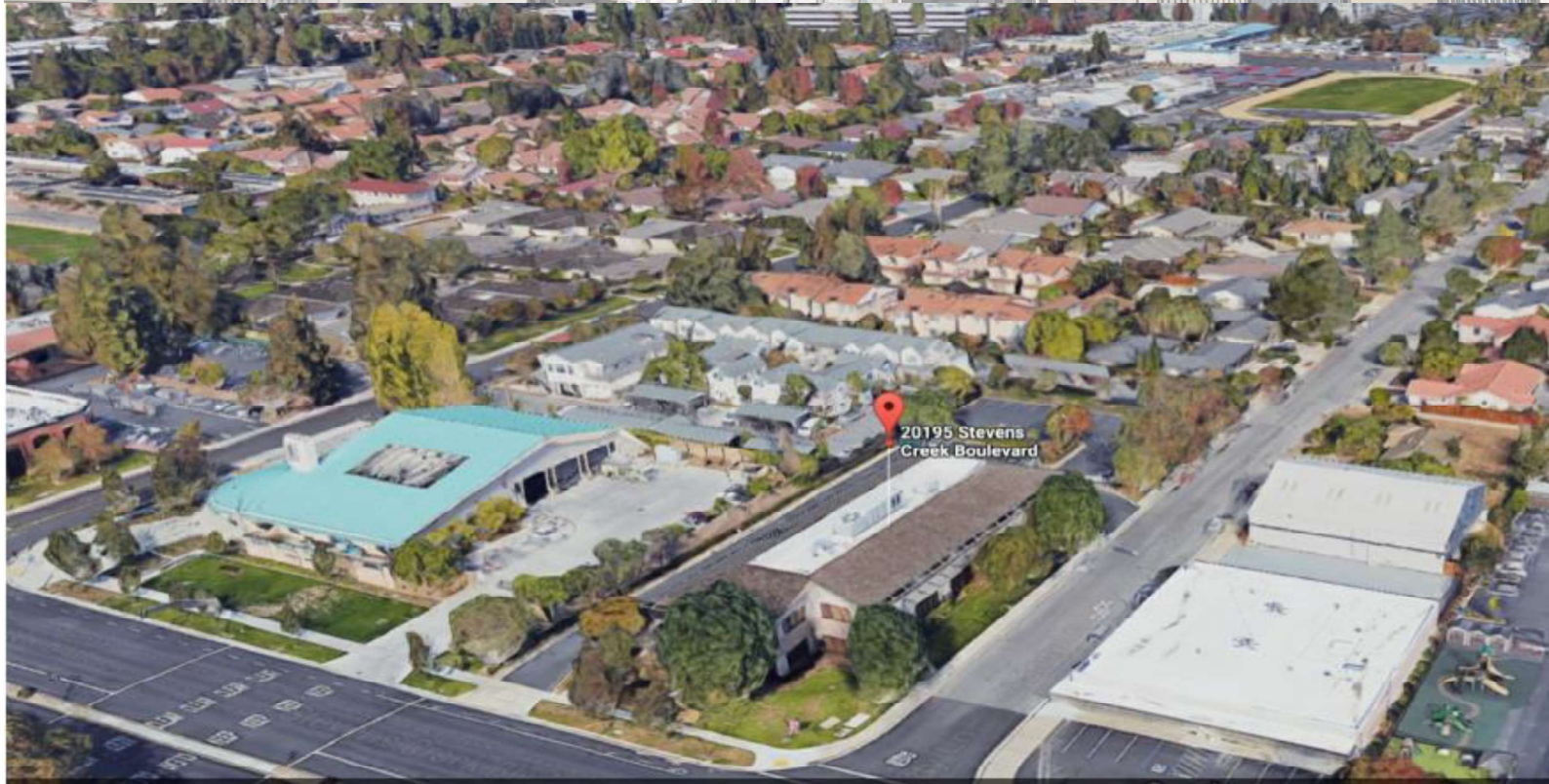
Linda Fox Mighdoll
LFM Properties
(408) 379 6730
(408) 483-0235 (Mobile)
Migfox@sbcglobal.net
CA BRE: 00789414
256 E Hamilton Avenue, Suite M. Campbell, Ca 95008



Property Description

20195 Stevens Creek Blvd,

Cupertino, CA 95014



20195 Stevens Creek is proud to be neighbors with Apple, De Anza college, Sugar CRM, etc. 20195 has been maintained by longstanding Top Tier Professional Vendors for HVAC, Electrical, Janitorial, Landscape and Security. The building features excellent glass line illuminating ideal floorplans to enjoy natural light, and tall ceilings framing executive doors driving highly desirable office environments. An exclusive onsite private parking lot for staff and clients make on-time meetings and site visits easier. A pedestrian friendly locale leads to a wide variety of convenient locally based dining options, community services and parks for a stroll. Strategically positioned within the Heart of Class A Office Community, 20195 is an ideal choice.

Linda Fox Mighdoll
LFM Properties
(408) 379 6730
(408) 483-0235 (Mobile)
Migfox@sbcglobal.net
CA BRE: 00789414
256 E Hamilton Avenue, Suite M. Campbell, Ca 95008



20195 Stevens Creek Blvd,

Cupertino, CA 95014



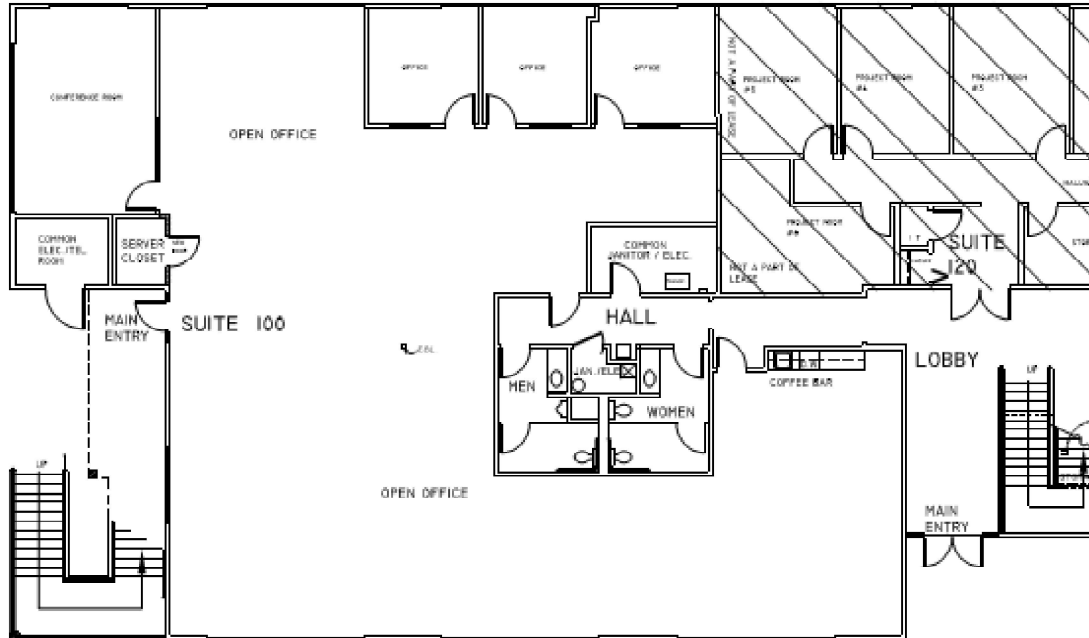
Linda Fox Mighdoll
LFM Properties
(408) 379 6730
(408) 483-0235 (Mobile)
Migfox@sbcglobal.net
CA BRE: 00789414
256 E Hamilton Avenue, Suite M. Campbell, Ca 95008



20195 Stevens Creek Blvd,

Cupertino, CA 95014

Suite 100



Suite 130



Linda Fox Mighdoll
LFM Properties
(408) 379 6730
(408) 483-0235 (Mobile)
Migfox@sbcglobal.net
CA BRE: 00789414
256 E Hamilton Avenue, Suite M. Campbell, Ca 95008

