



## Prime retail and office space available

- 128,000 sf grocery anchored shopping centre
- Major interior and exterior renovations complete
- Strong anchor tenants
- Excellent central location

**Nick Boertien**  
Sales Representative  
Principal  
+1 226 366 9011

**Jeremy Moser, CPA**  
Sales Representative  
Vice President  
+1 226 366 9002



Units range from  
1,865 sf - 3,084 sf



Pylon, building and unit  
signage



Access to GRT & LRT



## Property details

- Strong anchor Tenants including Valu-Mart, AFC Bowling, and Speed Quest Go Karting, along with other national retailers Tim Hortons, Dollarama, Subway and many others
- Excellent traffic flow at busy corner intersection
- Located in well known mature neighbourhood and centrally located directly off Highway #7 / #85 and proximity to downtown Kitchener
- Directly on GRT bus routes and one kilometre to the closest LRT stop
- Average annual daily traffic count of 22,180 vehicles



Zoning  
C-3



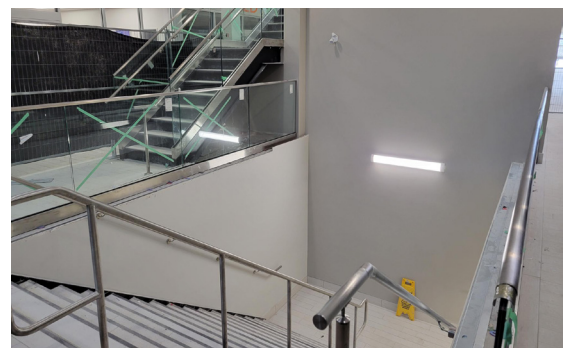
Signage  
Pylon, building & unit



Parking  
Abundant outside surface



Additional rent  
\$12.50 psf



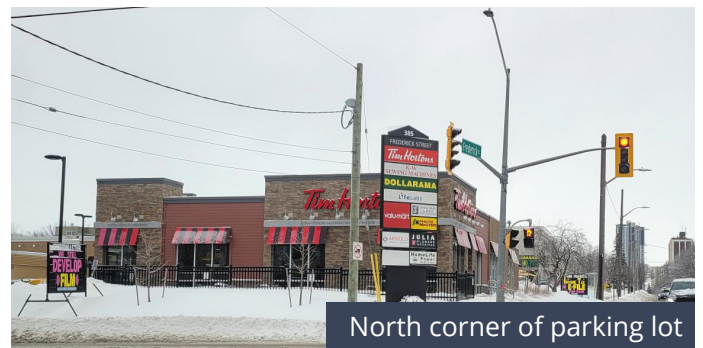


**Retail units for lease**

Unit	Size	Net rent
Unit #11	2,583 sf	<b>LEASED</b>
Unit #13	1,865 sf	\$25 psf
Unit #20A	3,084 sf	\$12 psf
Unit #29	570 sf	<b>LEASED</b>
Unit #34b	2,818 sf	<b>LEASED</b>

**Office configurations for lease**

Unit #200	Size	Net rent
Option 1	2,000 sf	\$17 psf
Option 2	3,500 sf	\$17 psf
Option 3	5,808 sf	\$16 psf



North corner of parking lot



## Demographics

### POPULATION

31,539 (2km) / 179,813 (5km)

### DAYTIME POPULATION

41,511 (2km) / 180,848 (5km)

### AVERAGE HOUSEHOLD INCOME

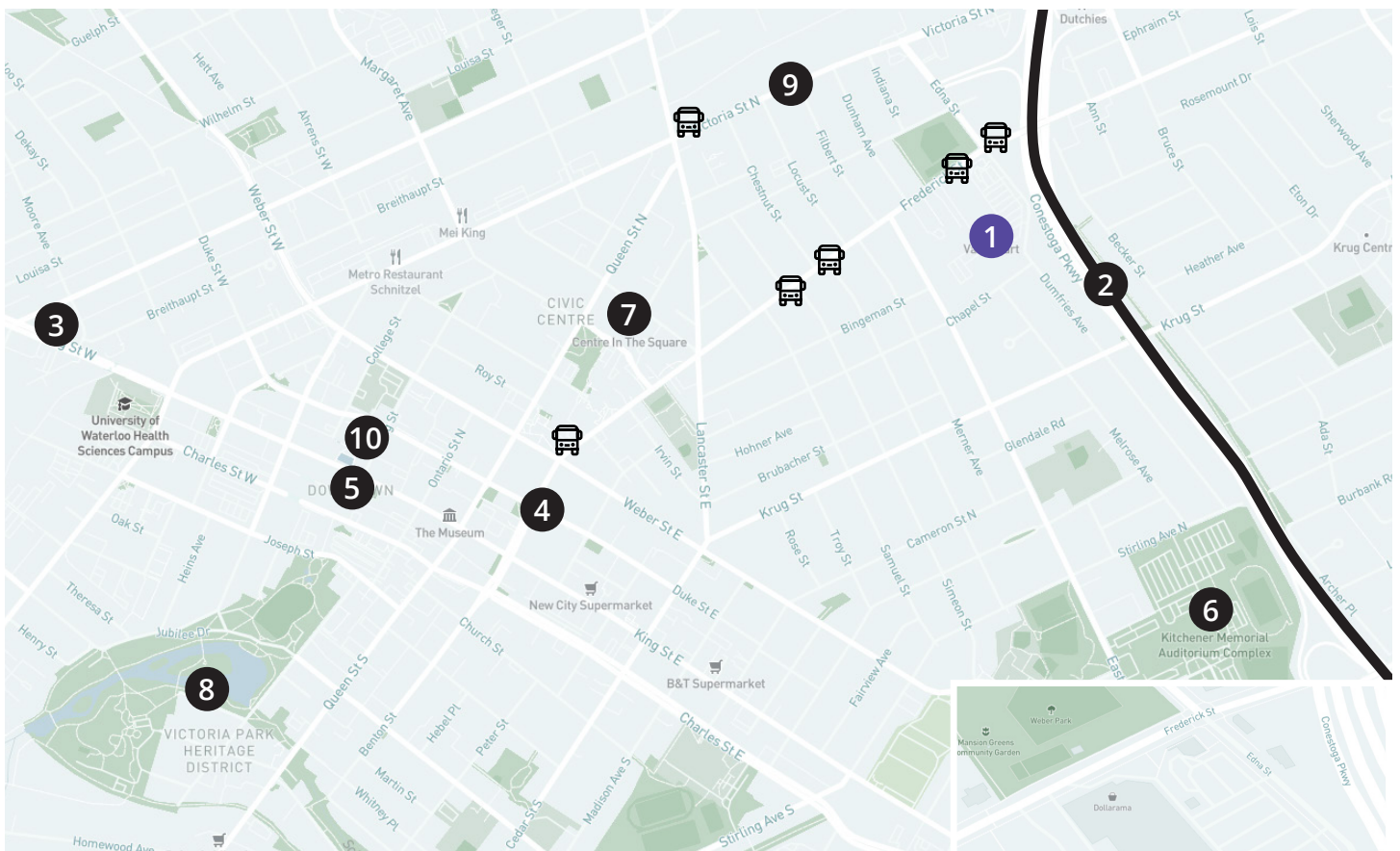
\$76,166 (2km) / \$83,314 (5km)

### MEDIAN AGE

39.8 (2km) / 38.4 (5km)

## Legend

- 1 Subject property
- 2 Highway 7
- 3 Google
- 4 Conestoga College
- 5 Downtown Kitchener
- 6 Kitchener Memorial Auditorium
- 7 Centre in the Square
- 8 Victoria Park
- 9 Victoria Street N
- 10 LRT stop



## Get more information

### Nick Boertien

Sales Representative  
Principal  
+1 226 366 9011

### Jeremy Moser, CPA

Sales Representative  
Vice President  
+1 226 366 9002

**Avison Young** Commercial Real Estate Services, LP, Brokerage  
231 Shearson Crescent, Suite 210  
Cambridge ON N1T 1J5  
T +1 226 366 9090 F +1 866 541 9755

