



# 1212 Market Street

1,657 - 14,000 RSF Contiguous Space

Great Non-Profit, Professional Services Office Space  
\$2/psf per year procuring brokerage commission

**Jean Ko**

415 810 1914

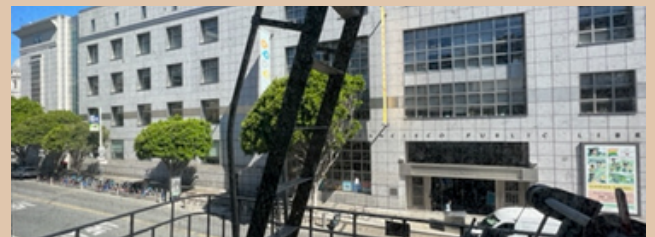
Jean.ko@jll.com

RE Lic #: 01184706



# 1212 Market Street

Suite	Size	Term	Rate	Build Out
Retail Space	1,657 RSF	1-5 years	Negotiable	Retail Space
<del>Retail Space (Grove St. side)</del>	<del>2,069 RSF</del>	<del>2-10 years</del>	<del>Negotiable</del>	<del>Leased Retail</del>
Suite 100 (Market St. side)	2,362 RSF	2-10 years	\$19/SF IG	2 windowline PO's with glass fronts, 1 interior PO with glass front, reception desk, three desks, 1 interior conference room
Suite 120 (Grove St. side)	1,694 RSF	2-10 years	\$19/SF IG	Open space with 2 interior meeting rooms, kitchenette
<del>Suite 200 (Market St. side)</del>	<del>1,611 RSF</del>	<del>2-10 years</del>	<del>\$20's IG</del>	<del>Leased Office Space</del>
<del>Suite 250 (Grove St. side)</del>	<del>2,459 RSF</del>	<del>2-10 years</del>	<del>\$20's IG</del>	<del>Leased Office Space</del>
<del>Suite 300 (Market St. Side)</del>	<del>1,771 RSF</del>	<del>2-10 years</del>	<del>\$19/SF IG</del>	<del>Furnished space, 2 conference rooms, kitchen, and LVT floors</del>
Suite 320 (Grove St. side)	1,771 RSF	2-10 years	\$19/SF IG	One windowline private office, one interior private office, kitchenette
Basement Office Space 1	1,172 RSF	2-10 years	\$1/psf/month FSG	Office/ Storage Space
Basement Office Space 2	570 RSF	2-10 years	\$1/psf/month FSG	Office/ Storage Space
Basement Office Space 3	635 RSF	2-10 years	\$1/psf/month FSG	Office/ Storage Space
Basement Office Space 4	1,010 RSF	2-10 years	\$1/psf/month FSG	Office/ Storage Space
Basement Office Space 5	306 RSF	2-10 years	\$1/psf/month FSG	Office/ Storage Space
Basement Office Space 6	279 RSF	2-10 years	\$1/psf/month FSG	Office/ Storage Space



**Jean Ko**

415 810 1914

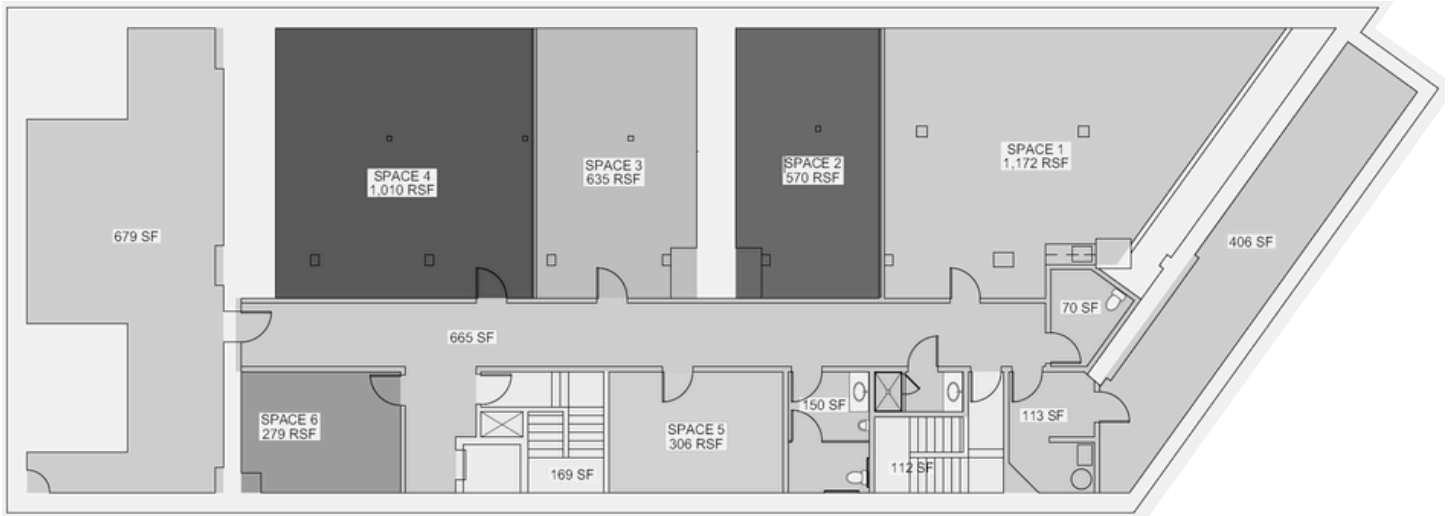
Jean.ko@jll.com

RE Lic #: 01184706



# 1212 Market Street

## Basement Space



RSF	Build Out	Term	Rate
Bsmt. Office Space 1: 1,172 RSF	Office/ Storage Space	2-10 years	\$1/psf/moFSG
Bsmt. Office Space 2: 570 RSF	Office/ Storage Space	2-10 years	\$1/psf/moFSG
Bsmt. Office Space 3: 635 RSF	Office/ Storage Space	2-10 years	\$1/psf/moFSG
Bsmt. Office Space 4: 1,010 RSF	Office/ Storage Space	2-10 years	\$1/psf/moFSG
Bsmt. Office Space 5: 306 RSF	Office/ Storage Space	2-10 years	\$1/psf/moFSG
Bsmt. Office Space 6: 279 RSF	Office/ Storage Space	2-10 years	\$1/psf/moFSG

**Jean Ko**

415 810 1914

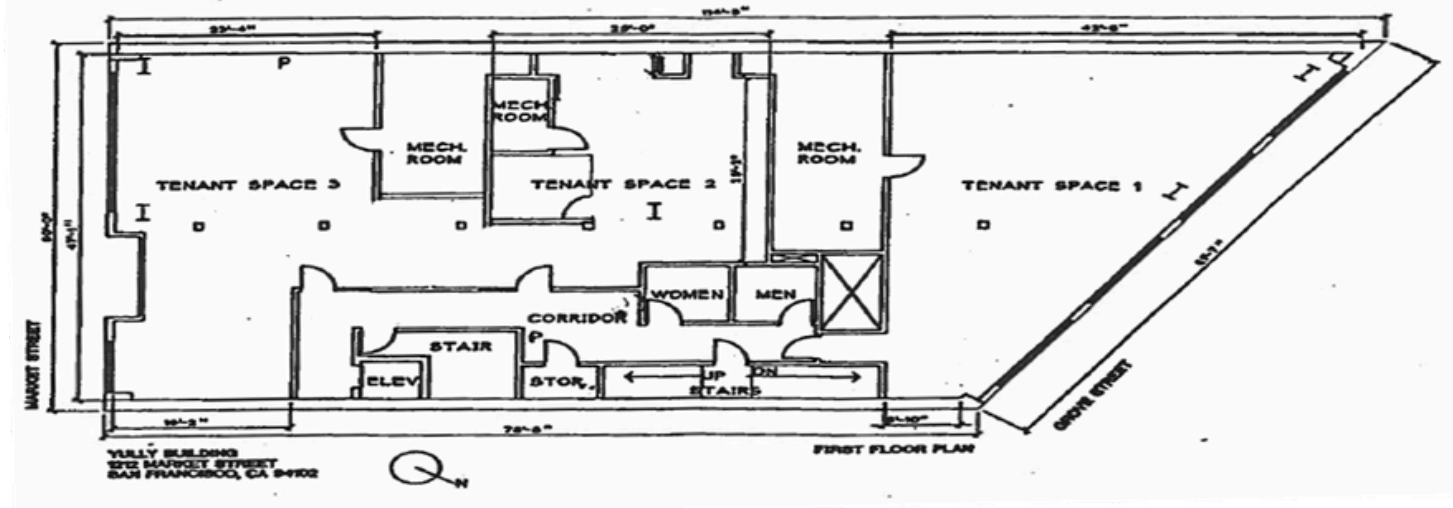
Jean.ko@jll.com

RE Lic #: 01184706



# 1212 Market Street

## 1st Floor Space



RSF	Build Out	Term	Rate
Suite 100 (Market St side) : 2,362 RSF	Fully furnished, 1 glass conf room	2-10 years	\$19/SF IG
Suite 120 (Grove St side): 1,694 RSF	Open space with 1 glass conf room	2-10 years	\$19/SF IG



**Jean Ko**

415 810 1914

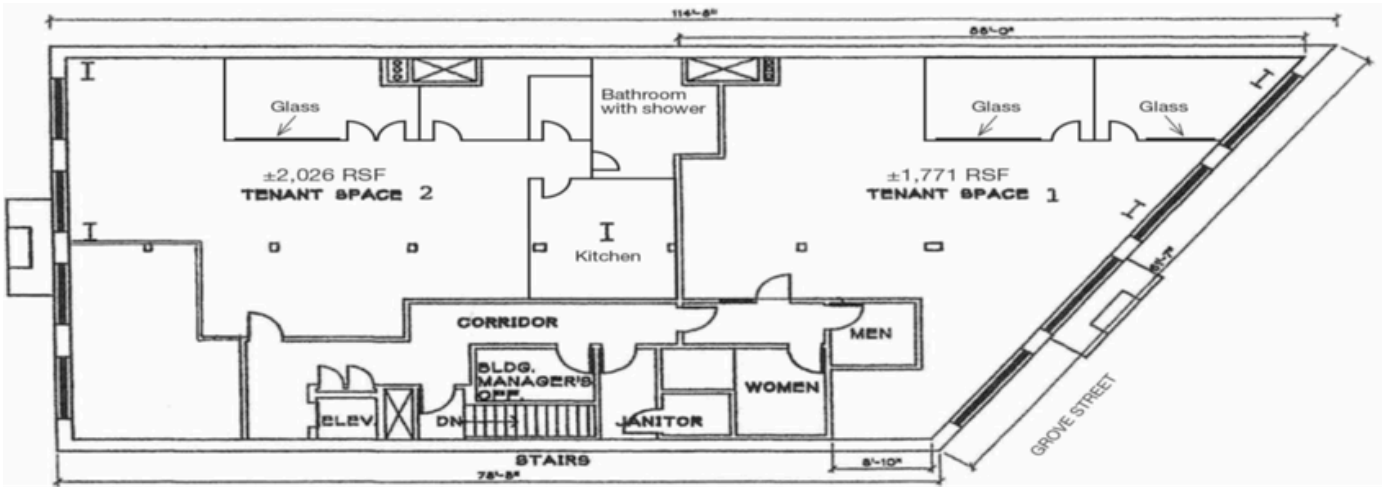
Jean.ko@jll.com

RE Lic #: 01184706

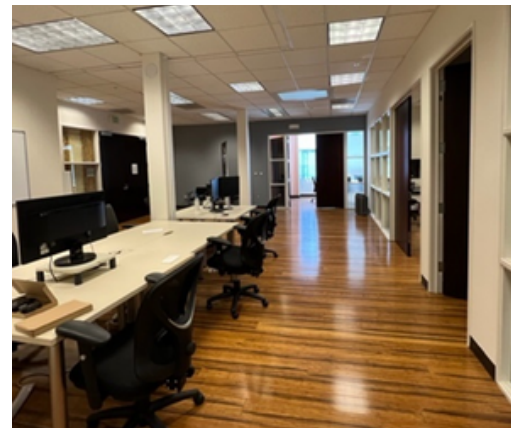


# 1212 Market Street

## 3rd Floor Space



RSF	Build Out	Term	Rate
Suite 300 (Market St. Side): 1,771 RSF	Furnished space, 2 conference rooms, kitchen, and LVT floors <b>LEASED</b>	2-10 years	\$19/SF IG
Suite 320 (Grove St Side): 1,771 RSF	One windowline private office, one interior private office, kitchenette	2-10 years	\$19/SF IG



**Jean Ko**

415 810 1914

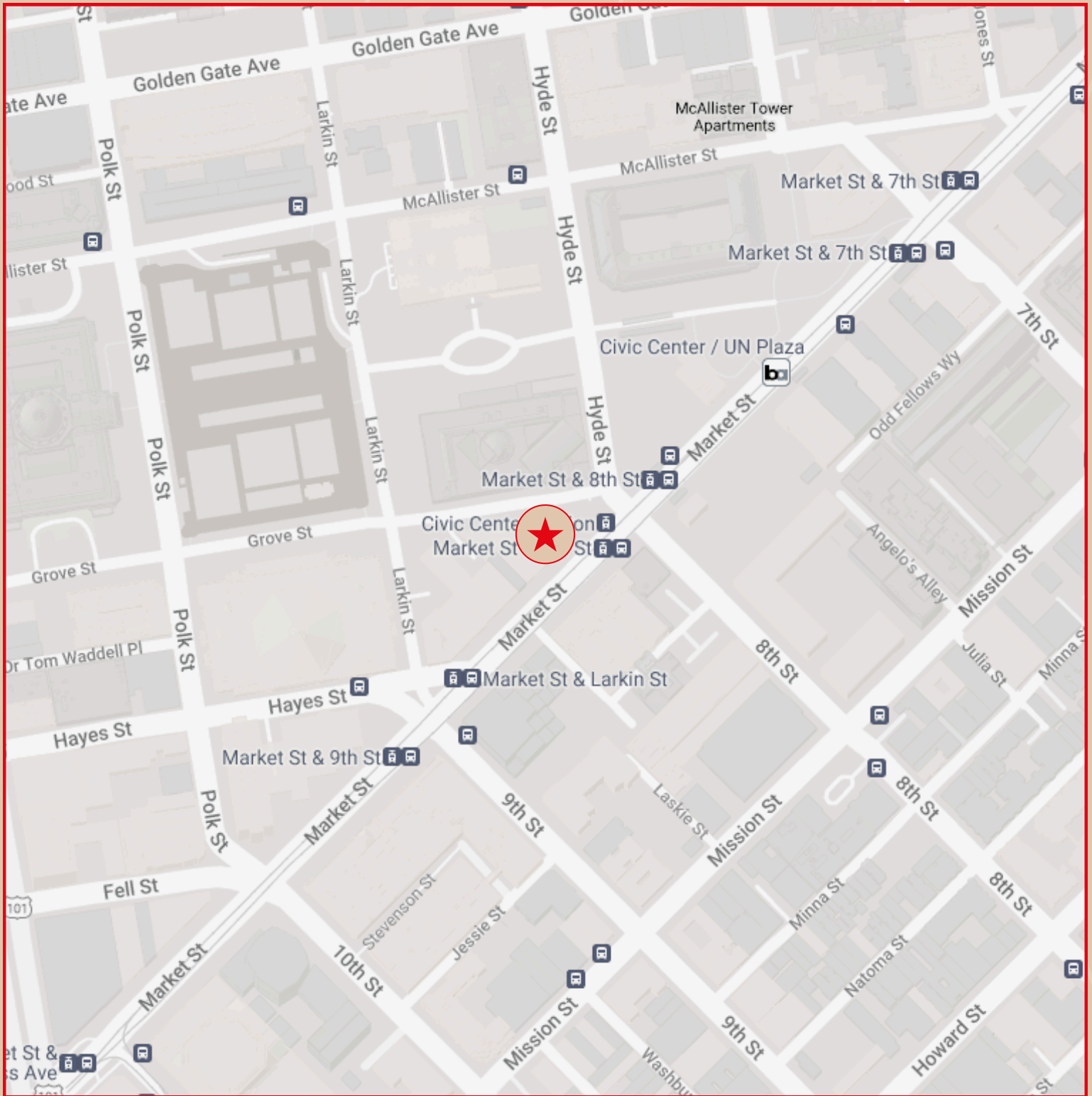
Jean.ko@jll.com

RE Lic #: 01184706



# 1212 Market Street

## Location Map



**Jean Ko**

415 810 1914

Jean.ko@jll.com

RE Lic #: 01184706

