



9801 Georgia Avenue Silver Spring, MD

FOR LEASE

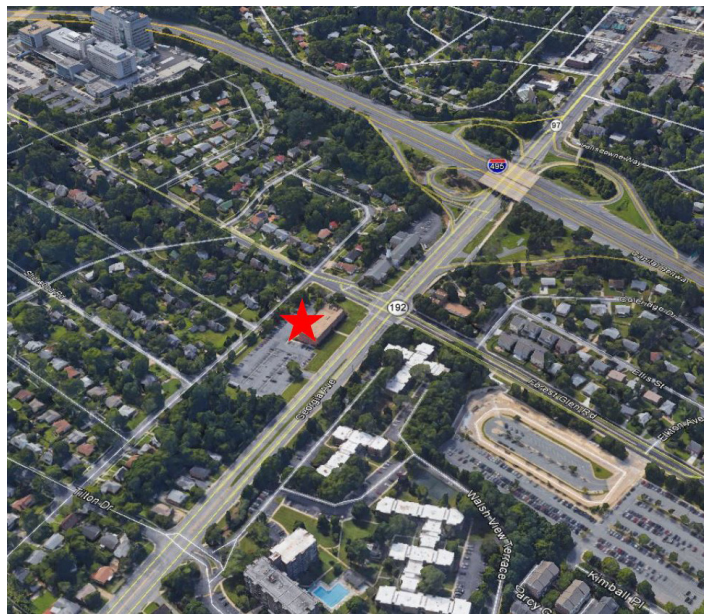
Availability

Suite 1-12 | 750 SF
Suite 2-24 B | 859 SF
Suite 2-29 | 783 SF
Suite 3-39 | 847 SF
Suite 3-421 | 940 SF

Features

Complete Medical Building
Beautifully Landscaped
Portico-Covered Driveway
Entrance
Ample Free Surface Parking
Walking Distance to Forest
Glen Metro Line (Redline)
Adjacent to I-495
Short Drive to I-95
Easy Access to Washington,
D.C.
Holy Cross Hospital - 7 Min

Aerial Map



For More Information

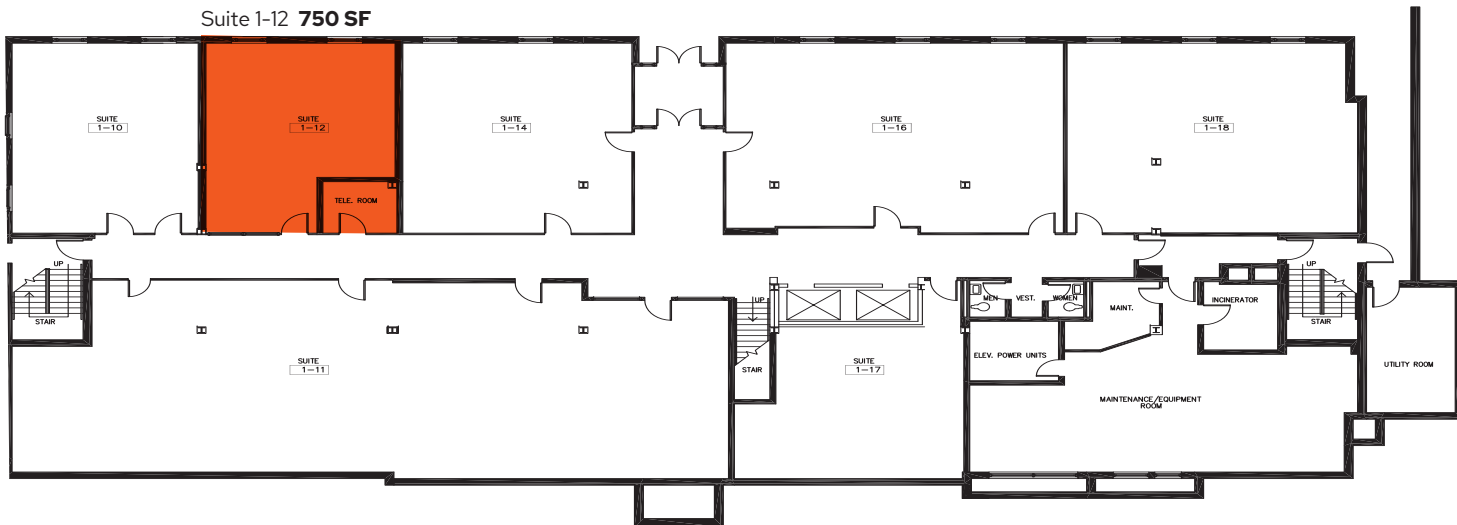
Kenneth E. Fellows
301.222.0210
kfellows@edgecre.com

Robert E. Pugh
301.222.0211
rpugh@edgecre.com

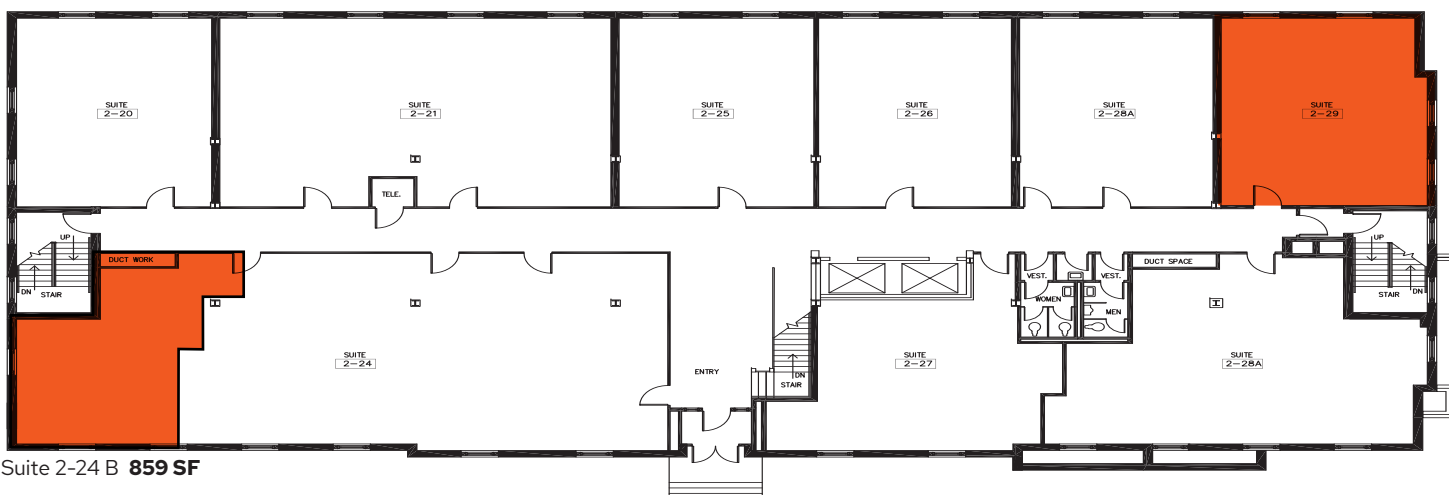
2273 Research Blvd | Suite 150
Rockville, MD 20850
301.222.0200



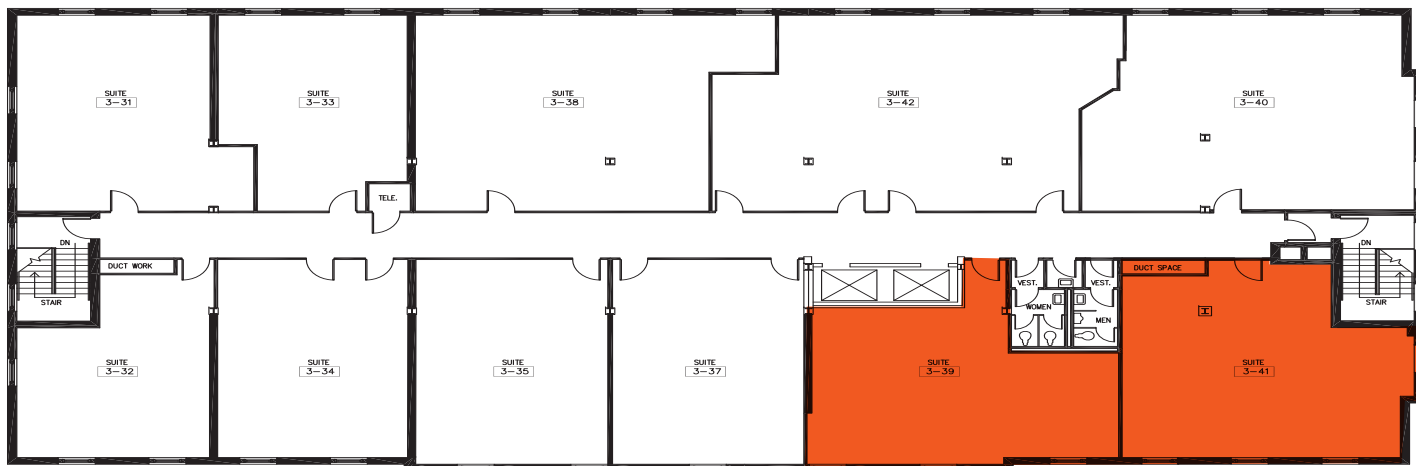
Suite 1-12 750 SF



Suite 2-29 783 SF



Suite 2-24 B 859 SF



Suite 3-39 847SF

Suite 3-41 940 SF

For More Information

Kenneth E. Fellows
301.222.0210
kfellows@edgecre.com

Robert E. Pugh
301.222.0211
rpugh@edgecre.com

2273 Research Blvd | Suite 150
Rockville, MD 20850
301.222.0200

