

# 300

# Rossland Road East

Ajax, Ontario

---

**MEDICAL OFFICE SPACE**

**2,372 - 3,033 SQ. FT. AVAILABLE FOR LEASE**



**CBRE**

# PROPERTY DETAILS

Located in the heart of Durham Region, in close proximity to Highways 401 & 407. 300 Rossland conveniently offers a large selection of amenities onsite such as ample surface parking, food/retail establishments, childcare, education, and healthcare.

A wide variety of medical tenants in the building, including Denistry in Ajax, Dynacare Laboratory & Health Services, One Health Family Practice, Pharmasave One Healthcare Pharmacy, Ajax Hearing Centre, and Durham Orthodontics, makes it easier for patients and family to prioritize their health and wellness in one location.

300 Rossland Road			
Suite		Sq. Ft.	Availability
201	<a href="#">Click here For Floorplan</a>	3,033	Immediate
202	<a href="#">Click here For Floorplan</a>	2,372	April 1, 2024

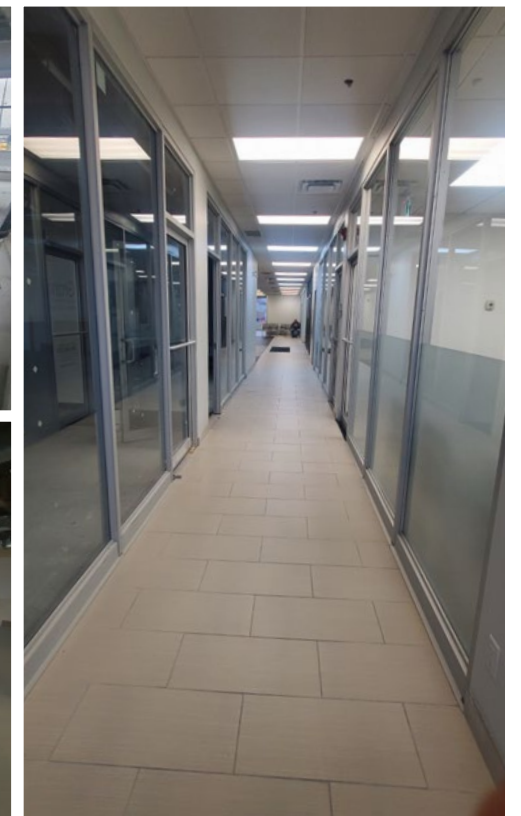
Demisable

<b>Net Rent</b>	\$18.00 per sq. ft.
<b>Additional Rent</b>	\$12.75 T.M.I (2023)
<b>Welcome Uses</b>	<ul style="list-style-type: none"> <li>• Elective/Cosmetic Clinics</li> <li>• Satellite Clinics</li> <li>• Geriatric Specialist</li> <li>• Nephrologist</li> <li>• Women's Health</li> <li>• Sleep Specialist</li> <li>• Endocrinologist</li> </ul>

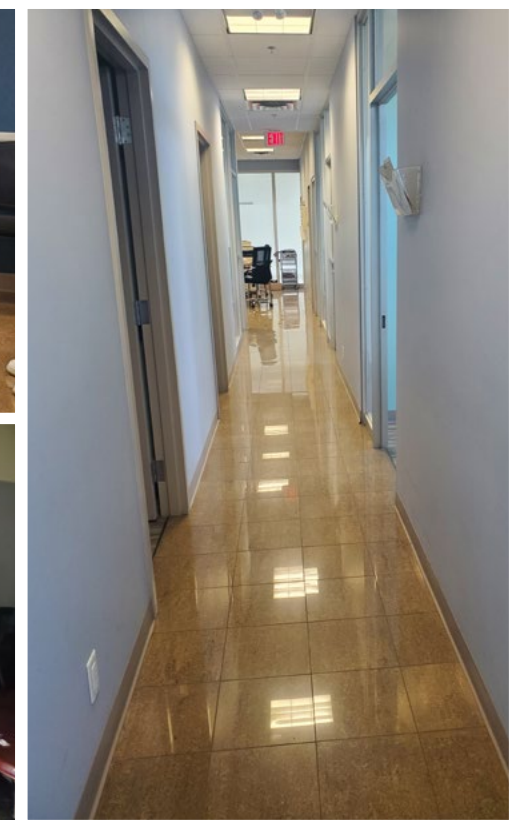
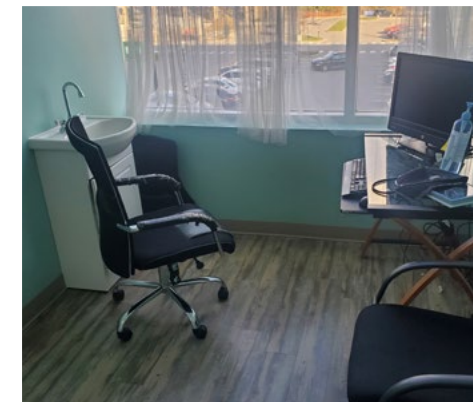
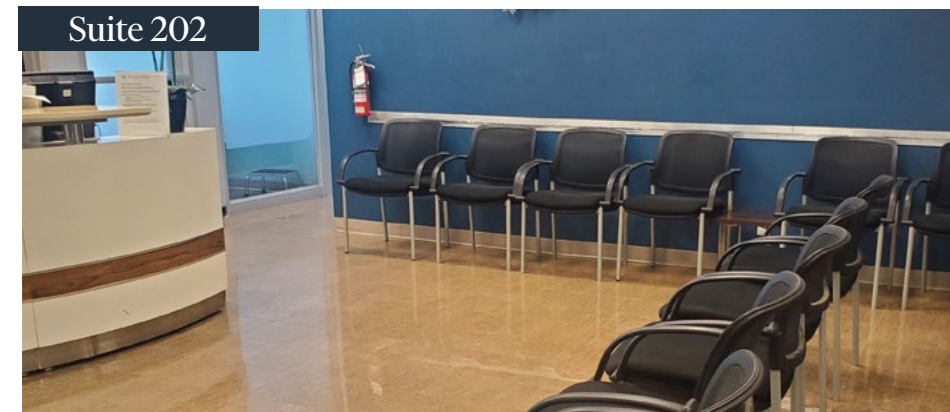
FOR LEASE

# SPACE PHOTOS

Suite 201



Suite 202



Serviced by Durham Region Bus route adjacent to the building



Close proximity to green space such as Carruthers Creek North, Castlefields Park and Beechridge Parkette



Variety of services and amenities within the same plaza



**FOR MORE INFORMATION, PLEASE CONTACT:**

**Michelle Saberon\***  
 Senior Transaction Manager  
 +1 416 495 6318  
 michelle.saberon@cbre.com

**Tony Gill\***  
 Senior Vice President  
 +1 416 495 6261  
 tony.gill@cbre.com

**Bryant Wilson\***  
 Vice President  
 +1 416 495 6278  
 bryant.wilson@cbre.com

\*Sales Representative | All Outlines Are Approximate | CBRE Limited, Brokerage | 2005 Sheppard Ave. E., #800, Toronto, ON M2J 5B4 | www.cbre.ca

This disclaimer shall apply to CBRE Limited, Real Estate Brokerage, and to all other divisions of the Corporation; to include all employees and independent contractors ("CBRE"). The information set out herein, including, without limitation, any projections, images, opinions, assumptions and estimates obtained from third parties (the "Information") has not been verified by CBRE, and CBRE does not represent, warrant or guarantee the accuracy, correctness and completeness of the Information. CBRE does not accept or assume any responsibility or liability, direct or consequential, for the Information or the recipient's reliance upon the Information. The recipient of the Information should take such steps as the recipient may deem necessary to verify the Information prior to placing any reliance upon the Information. The Information may change and any property described in the Information may be withdrawn from the market at any time without notice or obligation to the recipient from CBRE. CBRE and the CBRE logo are the service marks of CBRE Limited and/or its affiliated or related companies in other countries. All other marks displayed on this document are the property of their respective owners. All Rights Reserved. Mapping Sources: Canadian Mapping Services canadamapping@cbre.com; MapPoint, DMTI Spatial, Envirionics Analytics, Microsoft Bing, Google Earth-