



# ATRIA WEST

10585-10635 SANTA MONICA BOULEVARD  
LOS ANGELES, CA





## WELCOME TO ATRIA WEST, A MAGNETIC OFFICE HUB STRATEGICALLY SITUATED IN THE THRIVING HEART OF WEST LOS ANGELES

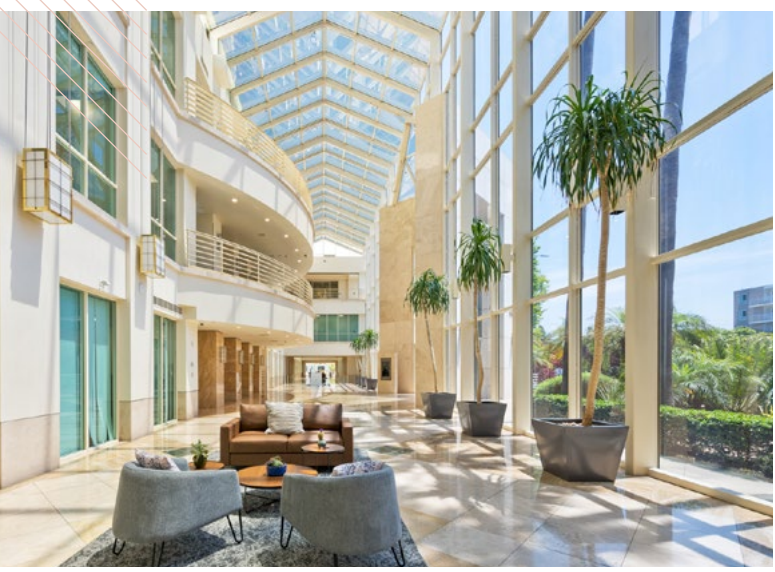
Where creativity meets connectivity. This exceptional two-building office campus boasts a seamless fusion of modern design, flexible workspaces, unique on-site cottage spaces, and an environment tailored for forward-thinking ideas, networking, and growth.

At Atria West, we understand the value of stability and reliability. With institutional ownership at the helm, our on-site property management prioritize tenant satisfaction, ensuring an unrivaled level of service and support.

### WHY TENANTS CHOOSE ATRIA WEST

- Magnificent three-story glass atriums with abundant natural light
- Floor-to-ceiling windows, high ceilings, and balconies throughout
- Tenant gym, locker rooms, lounge and conference center
- Prominent signage opportunity along Santa Monica Boulevard
- Above standard parking ratio of up to 3:1,000
- Attentive on-site property management and security







[CLICK !\[\]\(2bdfe261b986065ee0ac76460d6528c9\_img.jpg\) TO VIEW FLOOR PLAN](#)

[CLICK !\[\]\(dfbd6b3763a6d1d9afaa974f64e2e4b5\_img.jpg\) TO VIEW 3D TOUR](#)

## WEST BUILDING

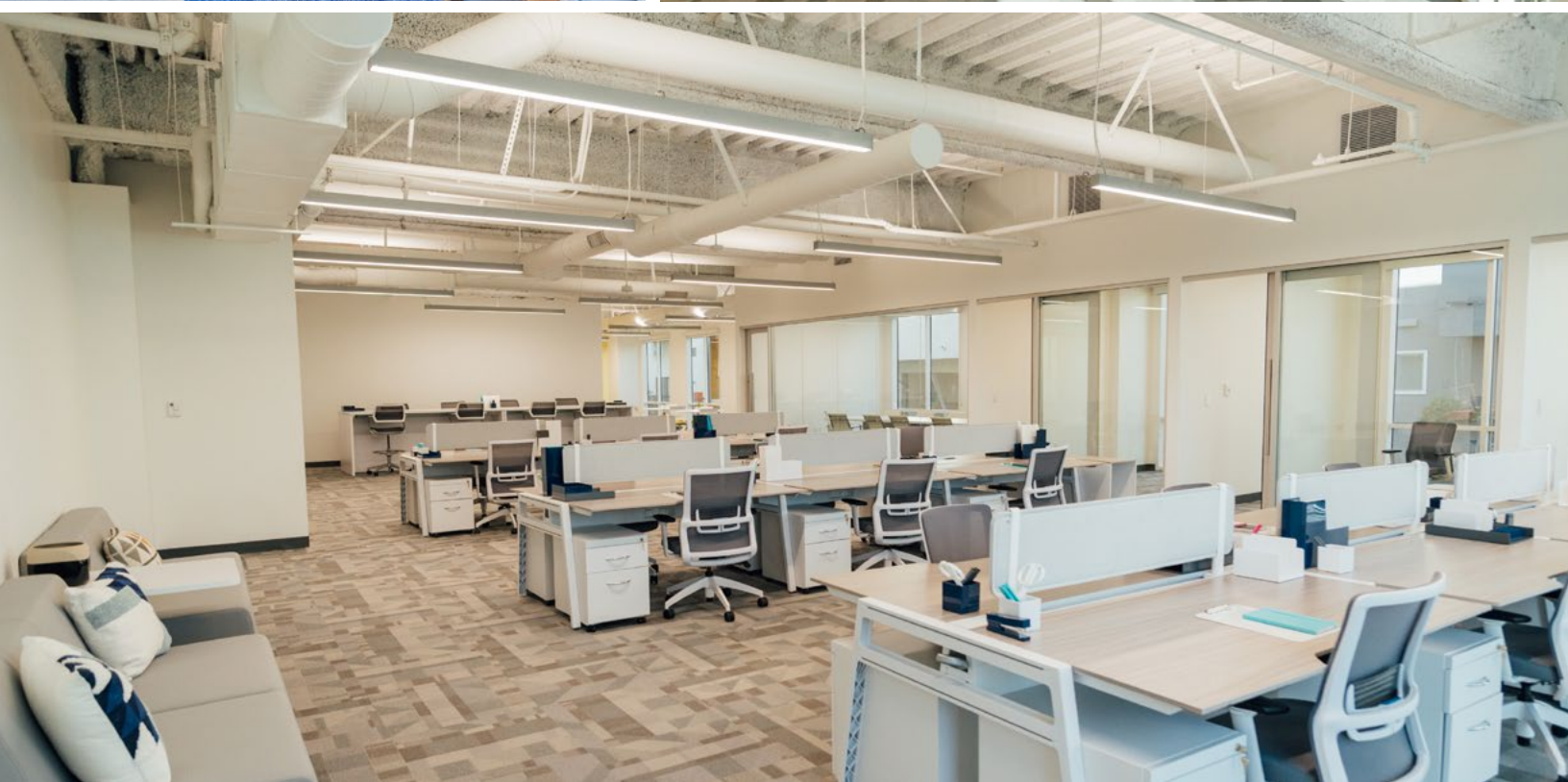
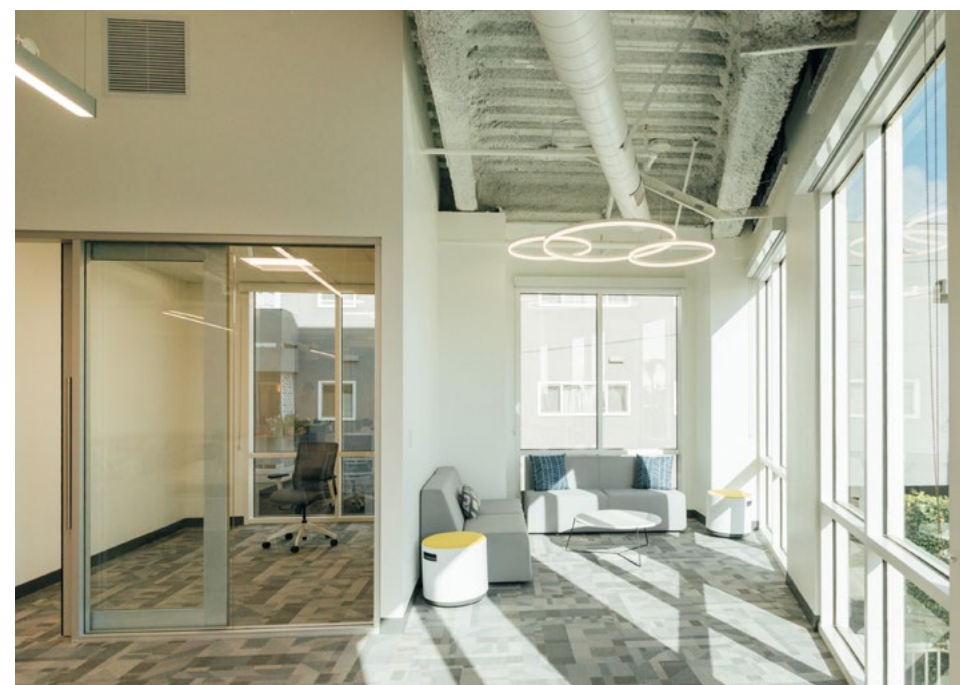
10635 SANTA MONICA BLVD

SUITE	SF	NOTES
 105	1,355	2 offices, 1 conference room and open work area
  115	1,849	New spec suite with 2 offices, kitchen and open work area
  135	2,834	New spec suite with 2 offices, conference room, and kitchen
  145	5,306	Move-in ready, fully furnished spec suite. 8 offices, 2 conference rooms reception area, kitchen, and open work area
  160	1,769	Move-in ready suite consisting of 3 offices, 1 conference room, storage, reception area, and kitchenette
  170	2,467	3 private offices, 2 conference rooms and a kitchen
  175	1,557	New spec suite with 3 offices, 1 conference room and kitchen with open work area
 240	15,274	Fully built out with high-end finishes and 23 offices, 6 conference rooms, kitchen, and open work area. Available September 6, 2026.
 300	15,103	Fully built with reception, 2 conference rooms, 20 private offices, kitchen, and open work area.
 305	3,023	3 offices, 1 conference room, reception, kitchen, and open work area
 315	1,049	1 office, reception area and open work area
 320	1,289	3 offices, 1 conference room, reception, and kitchen.
  340	1,742	Move-in ready, 2 offices, 1 conference room, reception area, storage, and open work area

## EAST BUILDING

10585 SANTA MONICA BLVD




FULLY LEASED!





CLICK  TO VIEW FLOOR PLAN

**GROVE COTTAGES**  
10669-10685 SANTA MONICA BLVD

ADDRESS	SF	NOTES
 10683 Santa Monica Blvd	919	1 offices, open area, and private restroom
 10685 Santa Monica Blvd	1,638	2 offices, open area, conference room, and kitchen
 10669 Santa Monica Blvd	959	1 office, 1 conference / meeting room, 2 private restrooms, kitchen, and open work area

dialtone

INTRODUCING DIALTONE COFFEE BAR

POURING SOONISH

Dialtone fuels your morning or your midday reset with expertly brewed coffee.

Dialtone is more than a cafe it's a space for connection, clarity, and indulgence. Whether you're grabbing a quick espresso or enjoying a fresh pastry or sandwich, every detail is crafted with care..



Learn more about Dialtone





# LOCATION



**BRENTWOOD** 3.3mi | 13min

I-405

▲ **SANTA MONICA** 6mi | 15min

COTTAGES

**WEST BUILDING**  
10635 SANTA MONICA BLVD

SANTA MONICA BLVD







**UCLA**

**WESTWOOD** 1.5mi | 7min

**EAST BUILDING**  
10585 SANTA MONICA BLVD

**BEVERLY HILLS** 2.2mi | 14min ▶

**CENTURY CITY** 2mi | 8min ▶

# AMENITIES



UCLA

WESTWOOD VILLAGE

15 MIN WALK



WILSHIRE BLVD



SANTA MONICA BLVD

- 16
- 14
- 8
- 7
- 12
- 11
- 15
- 13
- 5
- 10
- 2
- 3
- 9
- 4



W OLYMPIC BLVD

W PICO BLVD

◀ SANTA MONICA 6mi | 15min

BEVERLY HILLS 2.2mi | 14min ▶

**Westfield**  
CENTURY CITY

- |                    |                     |                     |
|--------------------|---------------------|---------------------|
| 85° Bakery Cafe    | Kate Spade New York | Shoe lab            |
| Adidas             | Kiehl's             | Skechers            |
| Aesop              | La Columbe          | SKIN FIVE           |
| Aldo               | Lacoste             | Steve Madden        |
| All Saints         | Leaff Waffles       | Sugarfina           |
| Anthropologie      | L'occitane en       | Swarovski           |
| Asicas             | Provence            | Sweetgreen          |
| Aveda              | Lorna Jane          | Ted Baker           |
| Banana Republic    | Lululemon           | Tendergreens        |
| Blue Bottle Coffee | LUSH Handmade       | Terra               |
| Brandini Toffee    | Cosmetics           | Tesla Motors        |
| Calmist            | M.A.C. Cosmetics    | The Body Shop       |
| Caudalie           | Madewell            | The Container Store |
| Chick-fil-A        | Malin + Goetz       | Tiffany & Co.       |
| Cole Haan          | Michael Kors        | Tory Burch          |
| COS                | Nordstrom           | Travis Mathew       |
| Finish Line        | NYX Professional    | UNTUCKit            |
| Free People        | Makeup              | Urban Decay         |
| Healthy Spot       | Old Navy            | Vans                |
| H&M                | Pressed Juicery     | Volcom              |
| Honey Birdette     | Randy's Donuts      | Warby Parker        |
| J. Crew            | R.M. Williams       | Wolf & Shepherd     |
| John Hardy         | Rock House Sliders  | Zadig et Voltaire   |
| Johnston & Murphy  | Saint Marc          | Zara                |
| John Varvatos      | Samsonite           | Ziba Beauty         |
| Joie               | Sephora             |                     |
| Jo Malone London   | Shake shack         |                     |

**Westfield**  
CENTURY CITY

AVENUE OF THE STARS

W PICO BLVD

DINE

1. **Dialtone\***
2. McDonald's
3. The Room Sushi Bar
4. Carmine's Restaurant & Bar
5. La Brushetta
6. Tacos Tu Madre
7. Starbucks
8. Attari Sandwich Shop

SHOP

9. Walgreen's
10. UPS Customer Center
11. Sprouts
12. Bristol Farms
13. World Market

SERVICES

14. Noor Nail Bar
15. Mobil Gas Station
16. Kimpton Hotel

\*On-site at Atria West Grove Cottages



## OFFICE LEASING:

### **PETER HAJIMIHALIS**

License #01994663  
peter.hajimihalಿಸ@jll.com  
+1 213 239 6399

### **CASSIE TROSCLAIR**

License #02021435  
cassie.trosclair@jll.com  
+1 310 595 3613

### **JACLYN WARD**

License #01912455  
jaclyn.ward@jll.com  
+1 310 595 3618



Jones Lang LaSalle Brokerage, Inc., Real estate license #01856260

Although information has been obtained from sources deemed reliable, neither Owner nor JLL makes any guarantees, warranties or representations, express or implied, as to the completeness or accuracy as to the information contained herein. Any projections, opinions, assumptions or estimates used are for example only. There may be differences between projected and actual results, and those differences may be material. The Property may be withdrawn without notice. Neither Owner nor JLL accepts any liability for any loss or damage suffered by any party resulting from reliance on this information. If the recipient of this information has signed a confidentiality agreement regarding this matter, this information is subject to the terms of that agreement. © 2026 Jones Lang LaSalle IP, Inc. All rights reserved.