

FOR LEASE

Size: 4,288 Sq. Ft.

Base Rent \$10.00 per Sq Ft

Est Additional Rent: \$5.25 per Sq Ft

460

COMMERCIAL



#1 - 77 Victoria Crescent, Nanaimo, BC V9R 5B9

This 4,288 sq. ft. unit is accessed via a dedicated metal staircase from Victoria Crescent, leading to a lower-level open area. The space was last used as a training school for body spa services, hairdressing, nail care, and pedicures, making it well-suited for educational, wellness, or similar commercial uses



John Hankins

C. 250.713 9830

E. jhankins@460commercial.com

2-1551 Estevan Road, Nanaimo, BC V9S 3Y3

FEATURES

- **Total Area:** 4,288 sq. ft.
- **Access:** Private metal staircase from Victoria Crescent
- **Layout:** Lower-level open area
- **Suitability:** Ideal for educational, wellness, or similar commercial uses

DETAILS

Civic Address

77 Victoria Crescent

Unit Size

4,288 Sq. Ft.

Legal Description

Lot 7, Section 1, Nanaimo District, Plan 11688

Zoning

DT-4

Base Rent

\$10:00 per Sq. Ft.

Est. Additional Rent

2025

\$5.25 per Sq. Ft.

NO WARRANTY OR REPRESENTATION, EXPRESS OR IMPLIED, IS MADE AS TO THE ACCURACY OF THE INFORMATION CONTAINED HEREIN, AND THE SAME IS SUBMITTED SUBJECT TO ERRORS, OMISSIONS, CHANGE OF PRICE, RENTAL OR OTHER CONDITIONS, PRIOR SALE, LEASE OR FINANCING, OR WITHDRAWAL WITHOUT NOTICE, AND OF ANY SPECIAL LISTING CONDITIONS IMPOSED BY OUR PRINCIPALS NO WARRANTIES OR REPRESENTATIONS ARE MADE AS TO THE CONDITION OF THE PROPERTY OR ANY HAZARDS CONTAINED THEREIN ARE ANY TO BE IMPLIED.

Intersection View: Esplanade & Hwy 1

#1 - 77 VICTORIA CRESCENT, NANAIMO, BC V9R 5B9



Street Level Access

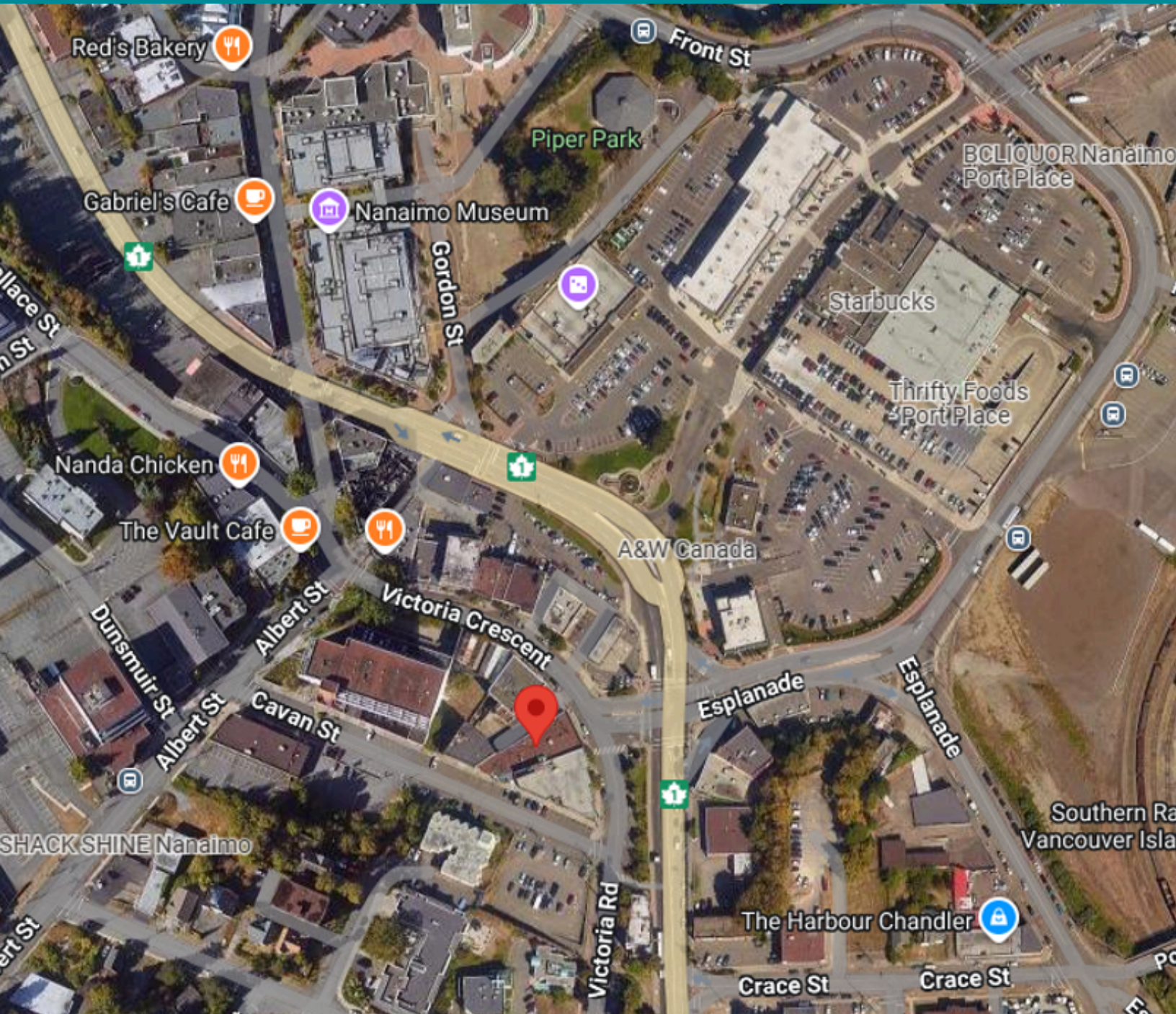






LOCATION

#1 - 77 VICTORIA CRESCENT, NANAIMO, BC V9R 5B9



John Hankins

C. 250.713.9830

E. jhankins@460commercial.com

2-1551 Estevan Road, Nanaimo, BC V9S 3Y3