

FOR LEASE

WILDROSE BUSINESS PARK

**+16,756 SF Great Warehouse
with 4 DH Loading Doors**



9225 STELLAR COURT, SUITE C | CORONA, CA 92883



COMMERCIAL REAL ESTATE SERVICES

4193 Flat Rock Drive, Suite 100
Riverside, CA 92505
Corporate DRE# 01048055

LAWRENCE C. NULL, SIOR | 951.276.3616 | lnull@leeriverside.com | DRE# 00822133

JUSTIN NULL, SIOR | 951.276.3634 | jnull@leeriverside.com | DRE# 01899025

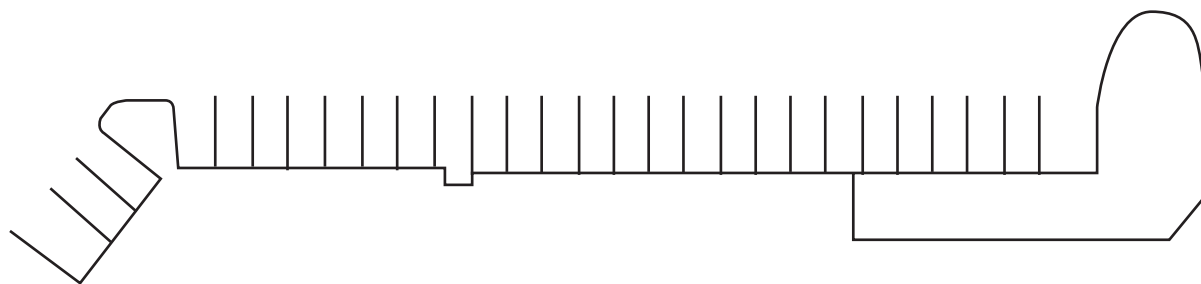
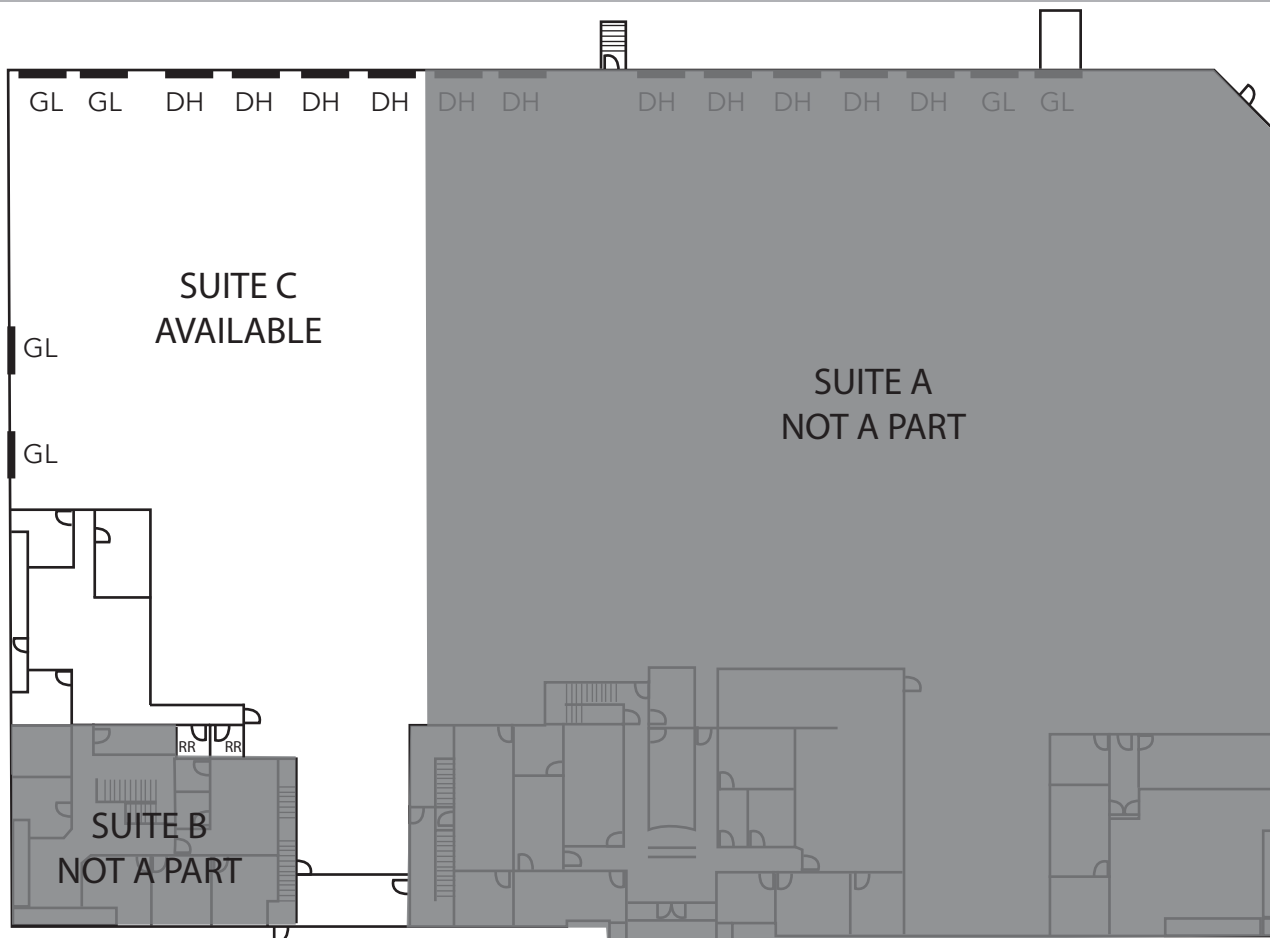
BUILDING FEATURES

- Suite C: ±16,756 SF Portion of a Larger Freestanding Industrial Building Available for Lease
- Located in Wildrose Business Park
- ±1,265 SF of Office Space
- 20 Parking Spaces
- Four (4) Ground Level Doors (12' x 14')
- Four (4) Dock High Doors (9' x 10')
- 400 Amp; 277/480V Power (Verify)
- 0.60 GPM/3,000 SF Fire Sprinkler System
- 30' Clear Height in Warehouse
- Rear Secured Yard
- SP-176 Zoning (Light Industrial)



Broker Contacts: Lawrence C. Null, SIOR, DRE# 00822133 | Justin Null, SIOR, DRE# 01899025

FLOOR PLAN



Not to Scale

Broker Contacts: Lawrence C. Null, SIOR, DRE# 00822133 | Justin Null, SIOR, DRE# 01899025

LEE & ASSOCIATES, INC. - RIVERSIDE | 4193 FLAT ROCK DRIVE, SUITE 100 | RIVERSIDE, CA 92505

No warranty or representation has been made as to the accuracy of the foregoing information. Terms of sale or lease and availability are subject to change or withdrawal without notice. Corporate DRE #01048055

PROPERTY PHOTOS



Broker Contacts: Lawrence C. Null, SIOR, DRE# 00822133 | Justin Null, SIOR, DRE# 01899025

LEE & ASSOCIATES, INC. - RIVERSIDE | 4193 FLAT ROCK DRIVE, SUITE 100 | RIVERSIDE, CA 92505

No warranty or representation has been made as to the accuracy of the foregoing information. Terms of sale or lease and availability are subject to change or withdrawal without notice. Corporate DRE #01048055

BIRD'S EYE VIEW

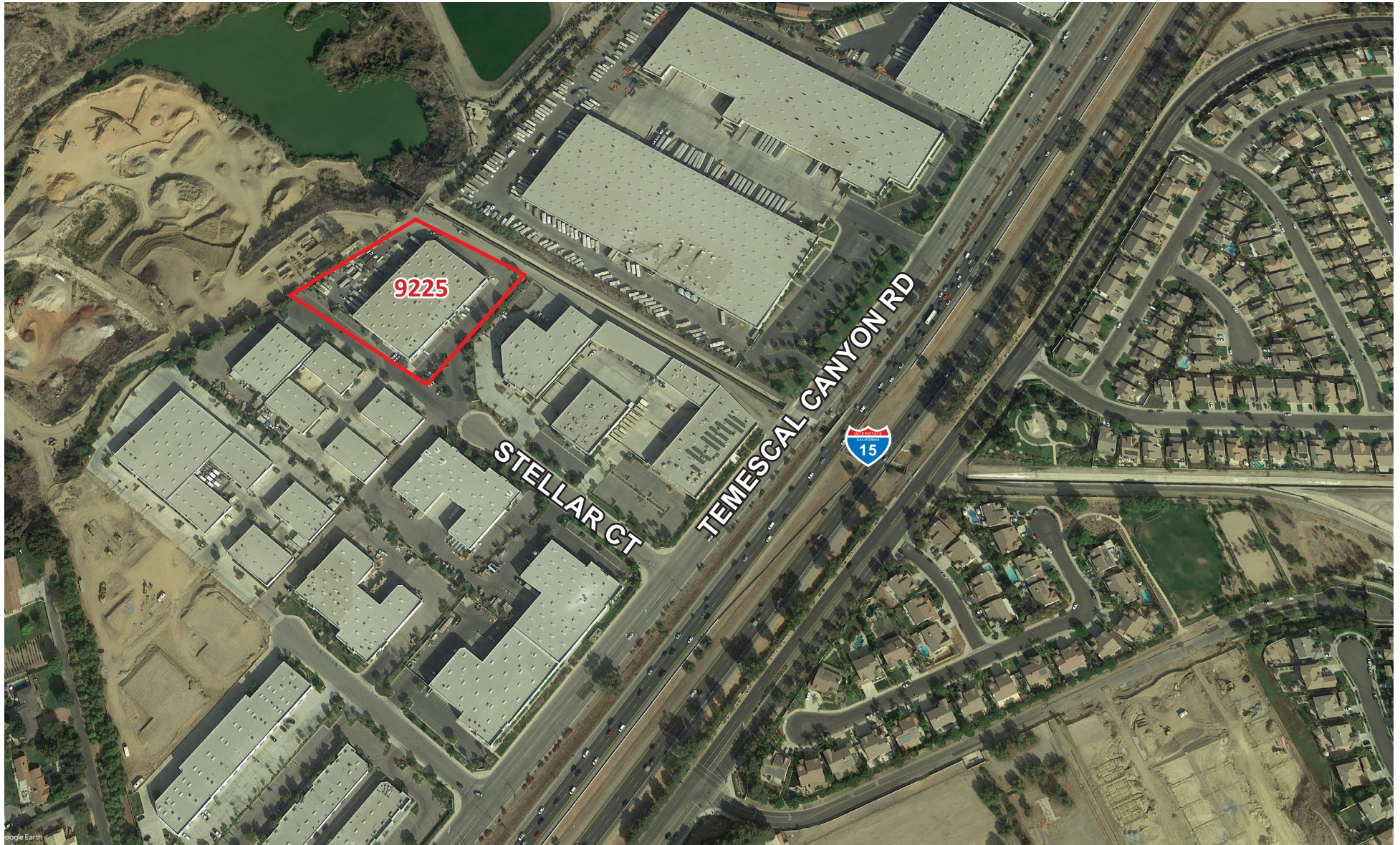


Broker Contacts: Lawrence C. Null, SIOR, DRE# 00822133 | Justin Null, SIOR, DRE# 01899025

LEE & ASSOCIATES, INC. - RIVERSIDE | 4193 FLAT ROCK DRIVE, SUITE 100 | RIVERSIDE, CA 92505

No warranty or representation has been made as to the accuracy of the foregoing information. Terms of sale or lease and availability are subject to change or withdrawal without notice. Corporate DRE #01048055

PROPERTY AERIAL



Broker Contacts: Lawrence C. Null, SIOR, DRE# 00822133 | Justin Null, SIOR, DRE# 01899025

LEE & ASSOCIATES, INC. - RIVERSIDE | 4193 FLAT ROCK DRIVE, SUITE 100 | RIVERSIDE, CA 92505

No warranty or representation has been made as to the accuracy of the foregoing information. Terms of sale or lease and availability are subject to change or withdrawal without notice. Corporate DRE #01048055

LOCATION MAP



Broker Contacts: Lawrence C. Null, SIOR, DRE# 00822133 | Justin Null, SIOR, DRE# 01899025

LEE & ASSOCIATES, INC. - RIVERSIDE | 4193 FLAT ROCK DRIVE, SUITE 100 | RIVERSIDE, CA 92505

No warranty or representation has been made as to the accuracy of the foregoing information. Terms of sale or lease and availability are subject to change or withdrawal without notice. Corporate DRE #01048055