

1120 S. Robertson Blvd

Los Angeles, CA 90035

Professional Office Building in the Heart of
Pico-Robertson For Lease (With Outdoor Patio Access)



COMMERCIAL
ASSET GROUP

ADAM FUNK

Managing Director
310.666.0124
afunk@cagre.com
Lic. 02129715

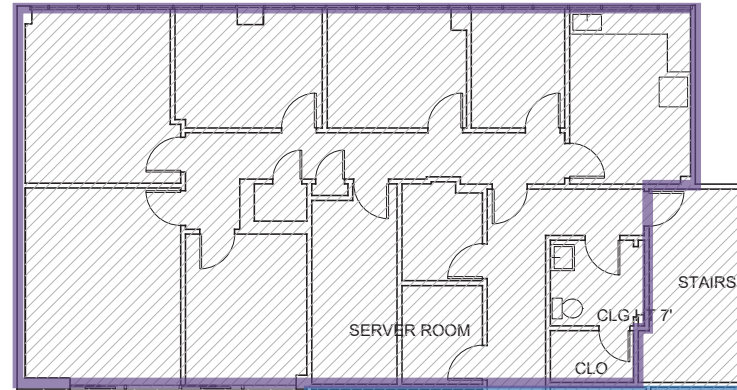
PROPERTY HIGHLIGHTS

RENTAL RATE	2ND FLOOR: NEGOTIABLE PENTHOUSE: NEGOTIABLE - NET OF ELECTRIC AND JANITORIAL (PENTHOUSE IS SEPARATELY METERED)
SPACE SIZE	2ND FLOOR: ±1,860-6,641 SF PENTHOUSE: ±1,550 SF (PENTHOUSE HAS LARGE PATIO + DIRECT ELEVATOR ACCESS)
TERM	3 - 5 YEARS
AVAILABILITY	IMMEDIATELY
PARKING	2ND FLOOR: 11 SPACES PENTHOUSE: 3 SPACES

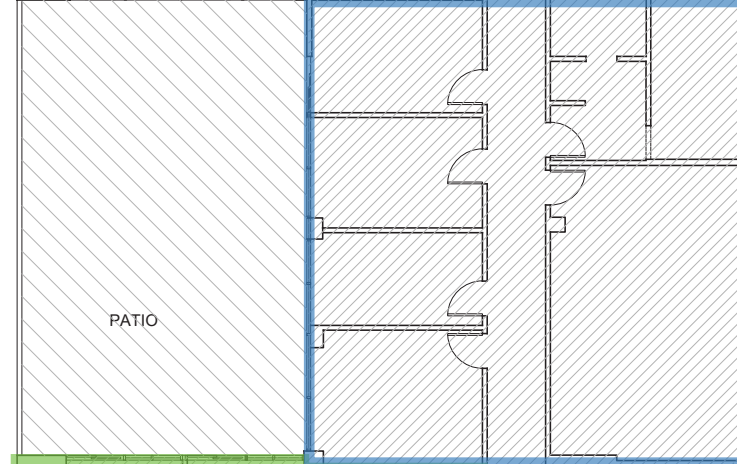
A four-story, professional office building, consisting of ±14,312 square feet of office space. Central location, minutes from Beverly Hills and West Hollywood. Excellent freeway access via Robertson Boulevard. Shallow space. Great natural light. On-site management.

2ND FLOOR PLAN: ±1,860 - 6,641 RSF

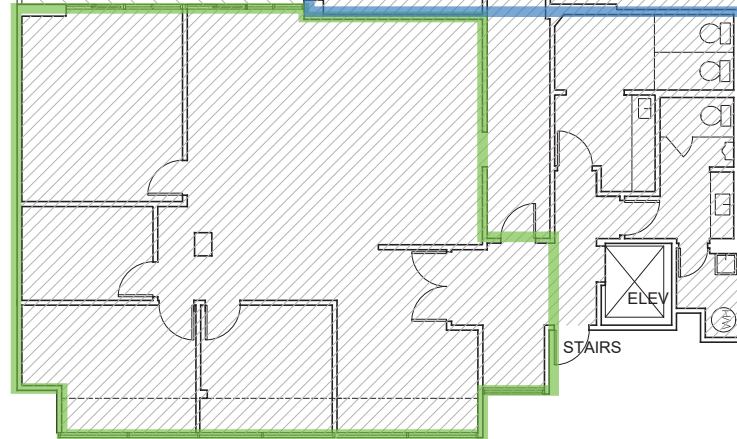
±2,383 SF



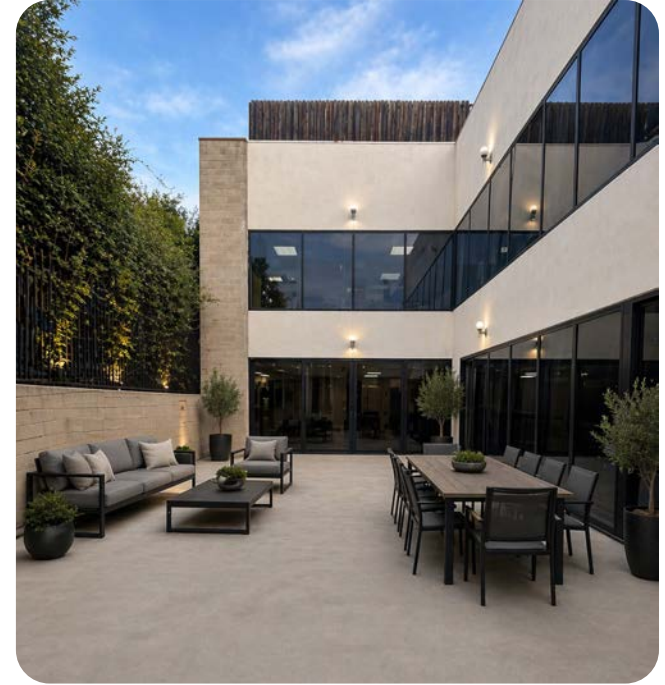
±1,860 SF



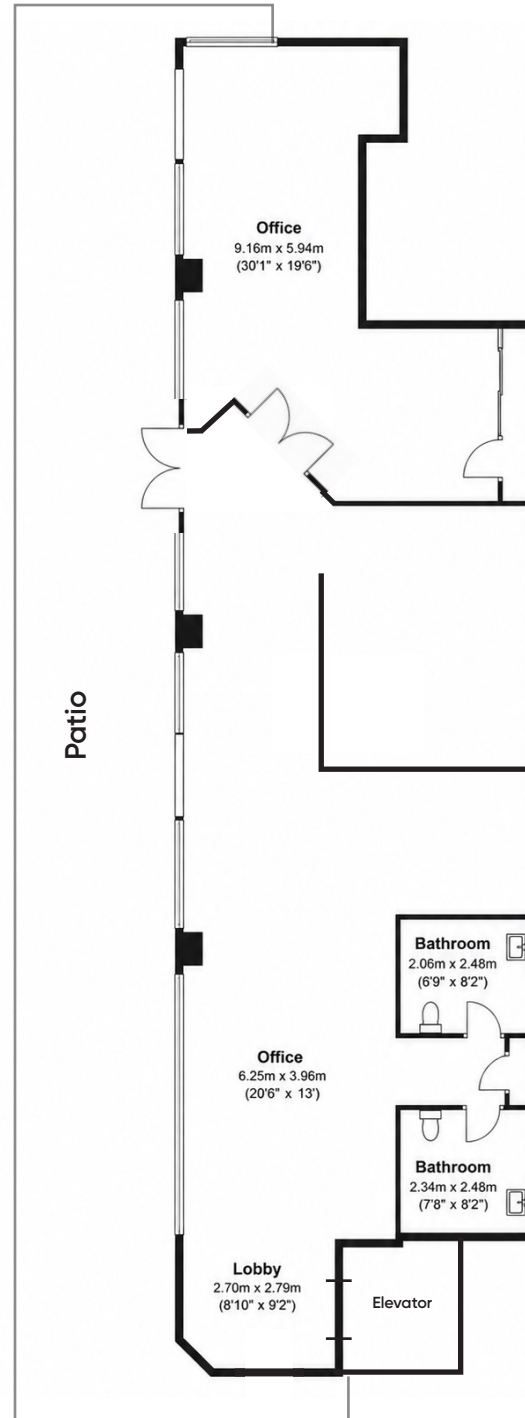
±2,398SF



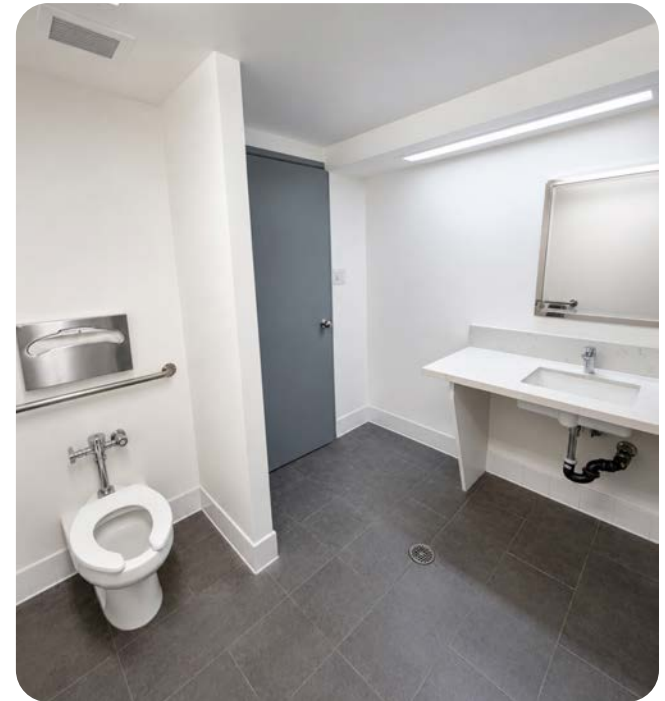
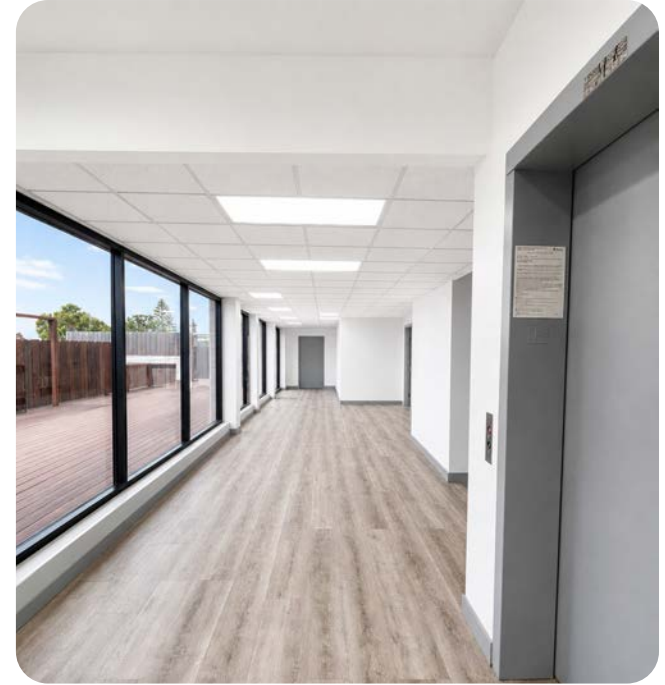
2ND FLOOR PHOTOS



PENTHOUSE FLOOR PLAN: ±1,550 RSF



PENTHOUSE PHOTOS



AERIAL



Adam Funk
Managing Director
310.666.0124
afunk@cagre.com
Lic. 02129715



**COMMERCIAL
ASSET GROUP**

Commercial Asset Group
190 N. Canon Drive, STE 300
Beverly Hills, CA 90210
P: 310.275.8222 F: 310.275.8223
www.cagre.com Lic. 01876070

These materials are based on information and content provided by others, which we believe are accurate. No guarantee, warranty or representation is made by Commercial Asset Group, Inc. or its personnel. All interested parties must independently verify accuracy and completeness. As well, any projections, assumptions, opinion, or estimates are used for example only and do not represent the current or future performance of the identified property. Your tax, financial, legal and toxic substance advisors should conduct a careful investigation of the property and its suitability for your needs, including land use limitations. The property is subject to prior lease, sale, change in price, or withdrawal from the market without notice.