



Duane Lake Academy

527 NY-22, Pawling, NY 12564



PROPERTY DESCRIPTION

Office | 2 spaces available | 600 SqFt - 2,300 SqFt

Newly renovated in 2023, this versatile space in this 10,000 SF office building sits on 4.12 acres and offers a flexible, modern layout suitable for educational operators, traditional offices, executive suites, coworking concepts, or specialized service-based businesses. The building spans two stories and is filled with natural light, creating a clean and productive work environment. With multiple tenancy options, a minimum divisible area of 700 SF, and a maximum contiguous space of 2,300 SF, the property accommodates users of both sizes. The site provides over 38 parking spaces, quiet surroundings, and convenient access to Route 22 with walkability to town, schools, shops, and the train. Zoned for Office/School use and offering over 3,000 SF of current vacancy, this property is ideal for businesses looking for a fully adaptable building with modern upgrades and excellent accessibility.

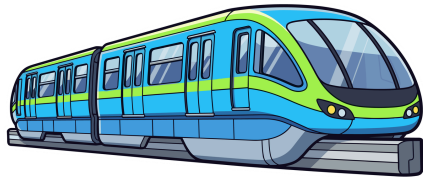
PROPERTY SUMMARY

Building Area	10,000 SqFt
Year Renovated	2023
Parcel ID	134001-7056-05-206939-0000
Zoning	B2
County	Dutchess



PUBLIC TRANSPORTATION

Category	Location / Station	Drive Time	Walk Time	Distance
Commuter Rail	Pawling Station (Harlem Line - Metro-North Railroad Company)	3 min	12 min	0.6 mi
Commuter Rail	Appalachian Trail (Harlem - Metro-North Railroad)	4 min	—	2.3 mi
Airport	New York Stewart International Airport	55 min	—	38.6 mi
Airport	Westchester County Airport	45 min	—	37.5 mi



Pawling Stn.
0.6 MI
Appalachian Trail
2.3 MI



**New York Stewart
International Airport**
38.6 MI



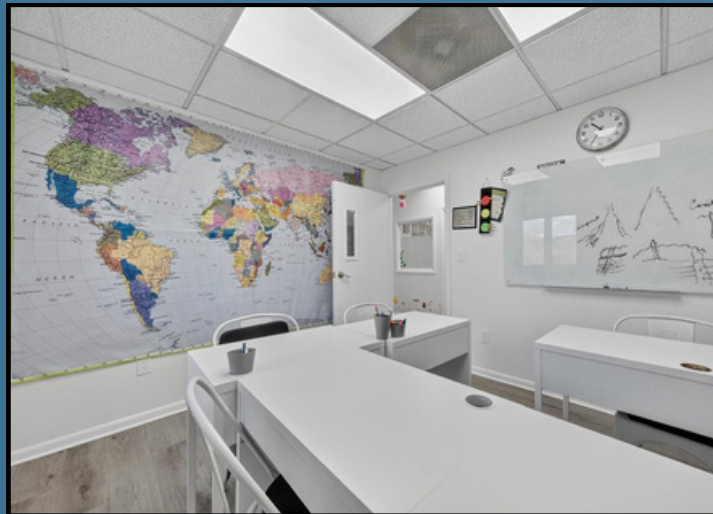
Westchester County Airport
37.5 MI

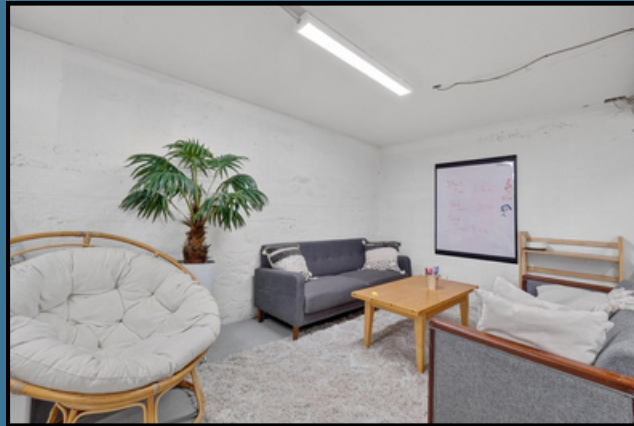
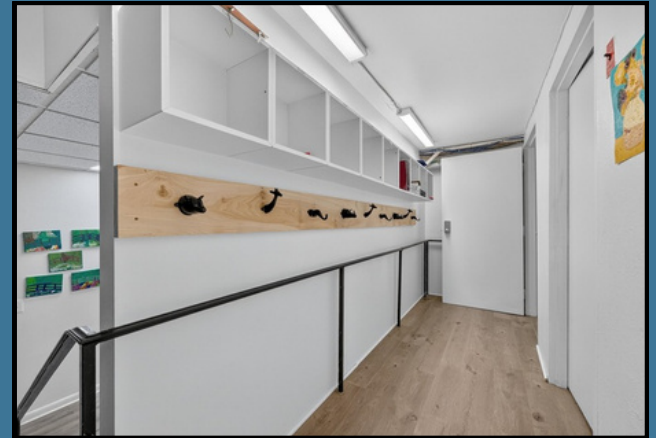


Space 1

Duane Lake Academy

- The first space previously built out as a Charter School, includes four private offices, two private restrooms, two large conference areas, a welcoming lobby, elevator access, and multiple private entrances that allow for easy tenant separation or private access.





Excellence, Redefined in Every Detail



Space 2

Women's Work

- This 700 SF suite offers a bright and efficient workspace with a spacious operations room and a private office. Natural light, on-grade entrances, and direct elevator access make it convenient and accessible. With 38 parking spaces and full handicap accessibility, it's ideal for mail-order fulfillment, administrative teams, or flexible hybrid office setups.



Elevate Your Workspace. Expand Your Potential.

Modern, flexible office spaces with excellent accessibility, ample parking, and a professional environment designed to support your business growth.



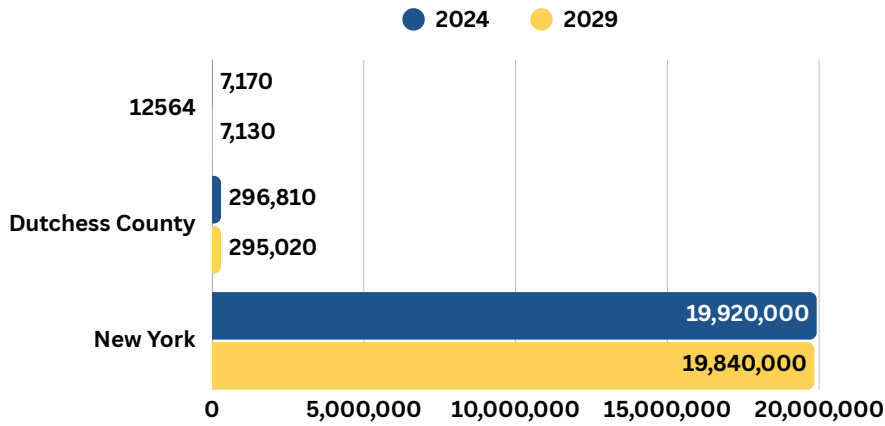


DEMOGRAPHICS

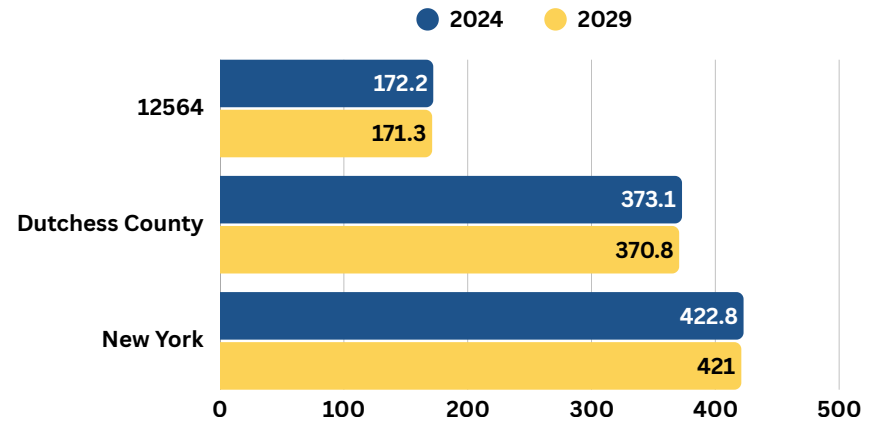


POPULATION

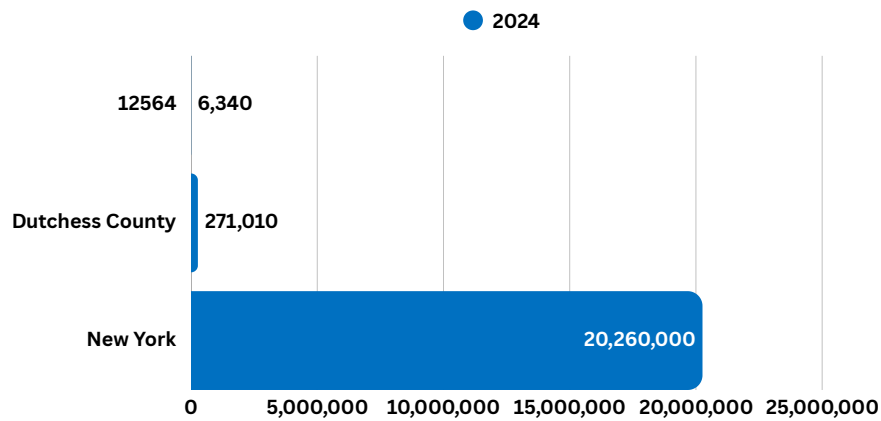
Total Population



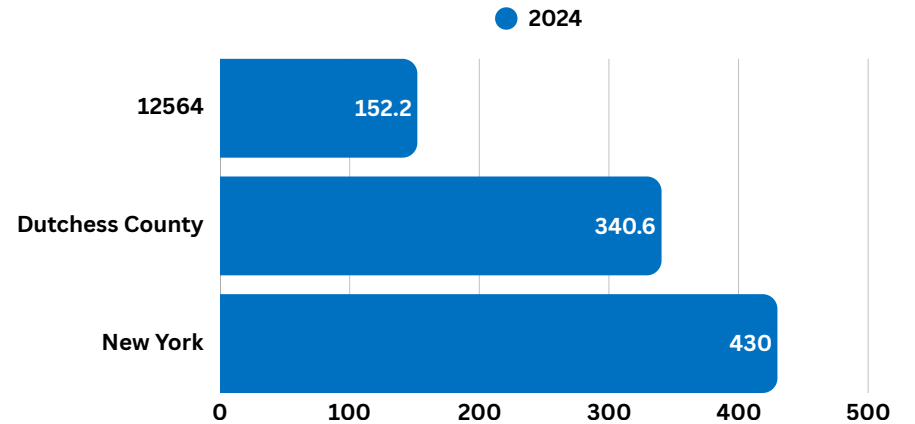
Population Density



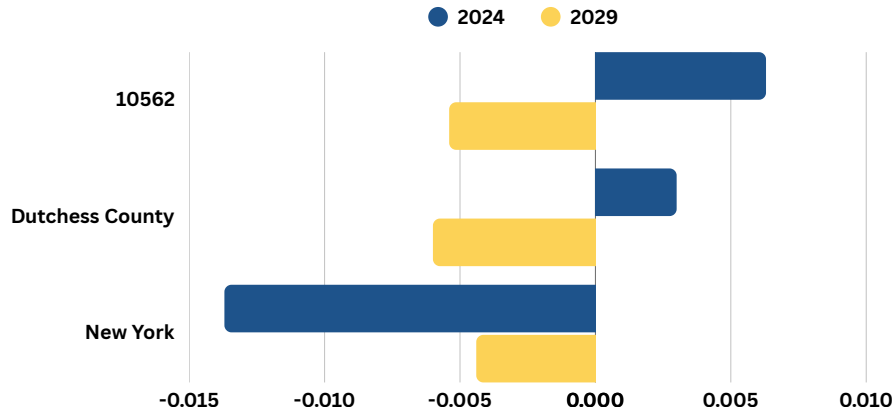
Total Daytime Population



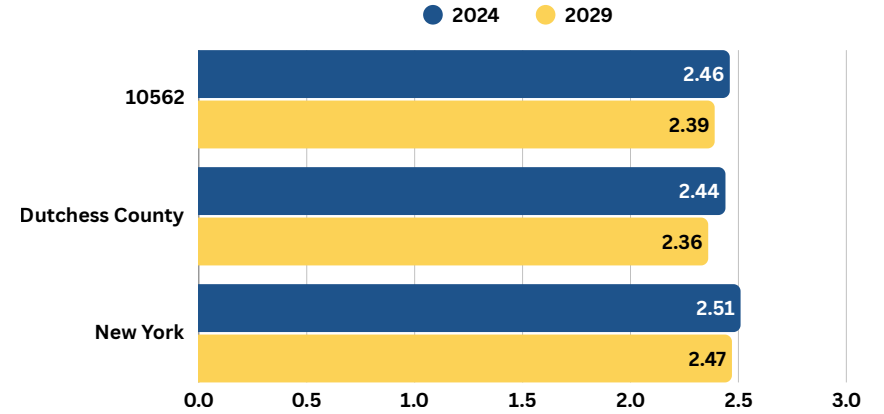
Daytime Population Density



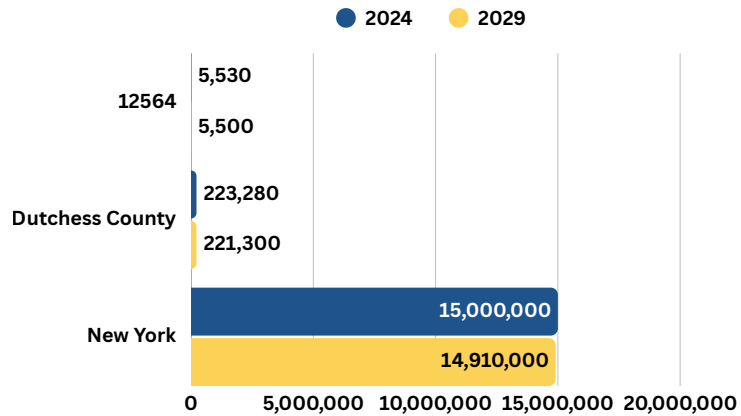
Population Change Since 2020



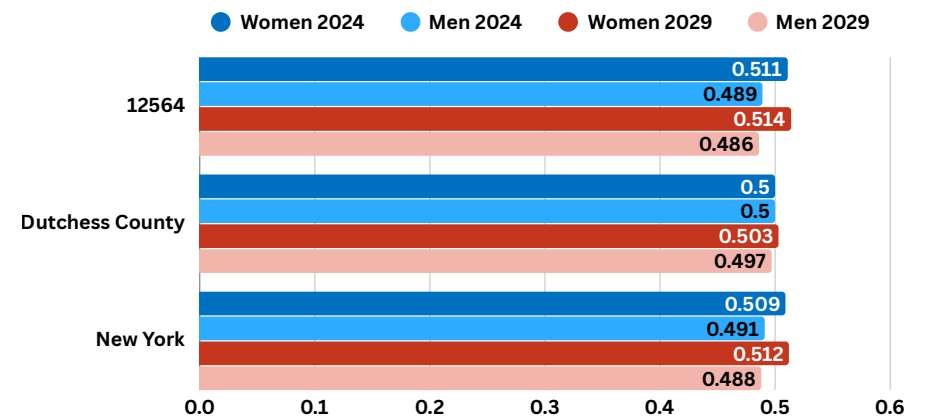
Average Household Size



Population Living in Family Households

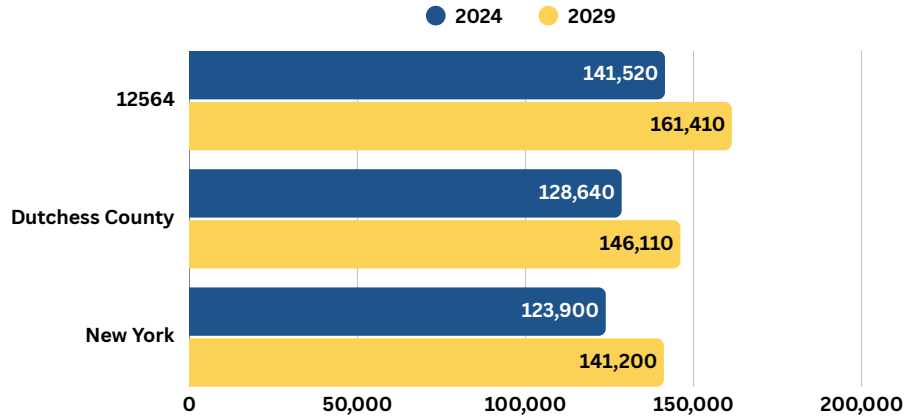


Family / Male Ratio

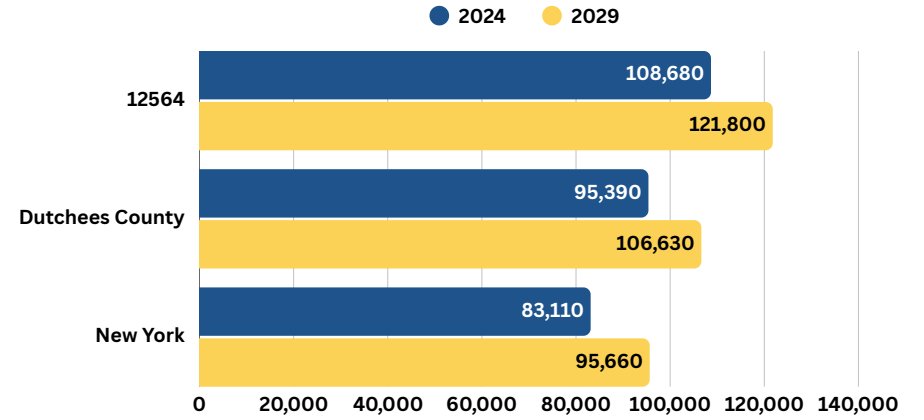


INCOME

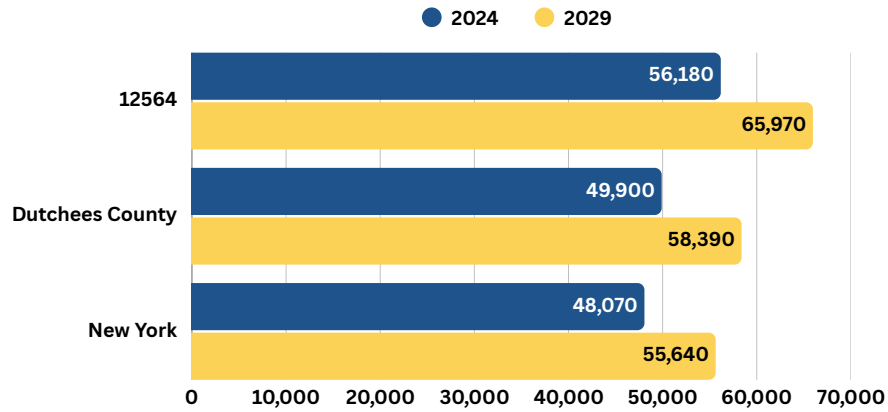
Average Household Income



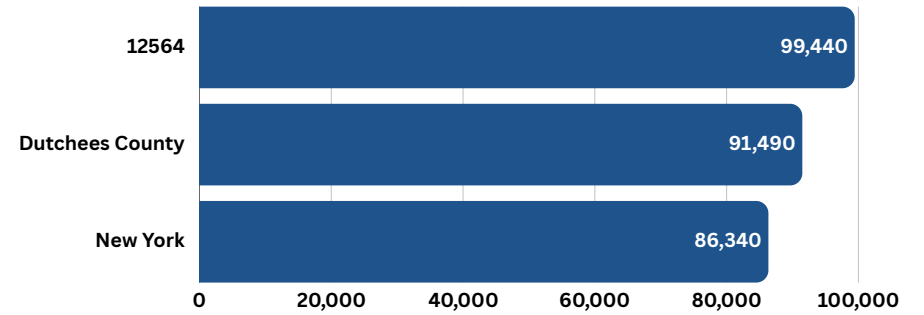
Median Household Income



Per Capita Income

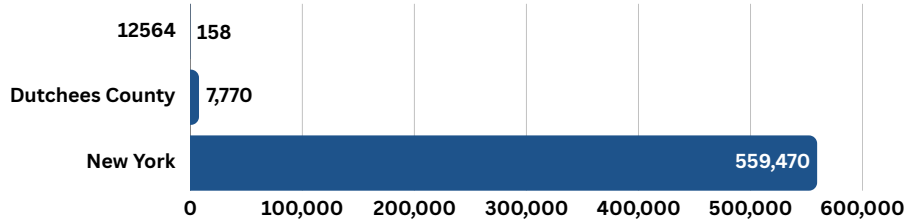


Average Disposable Income

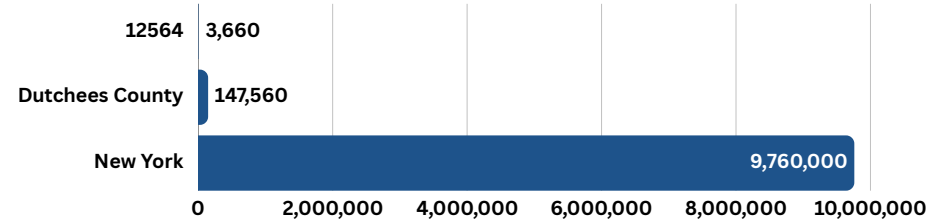


ECONOMY

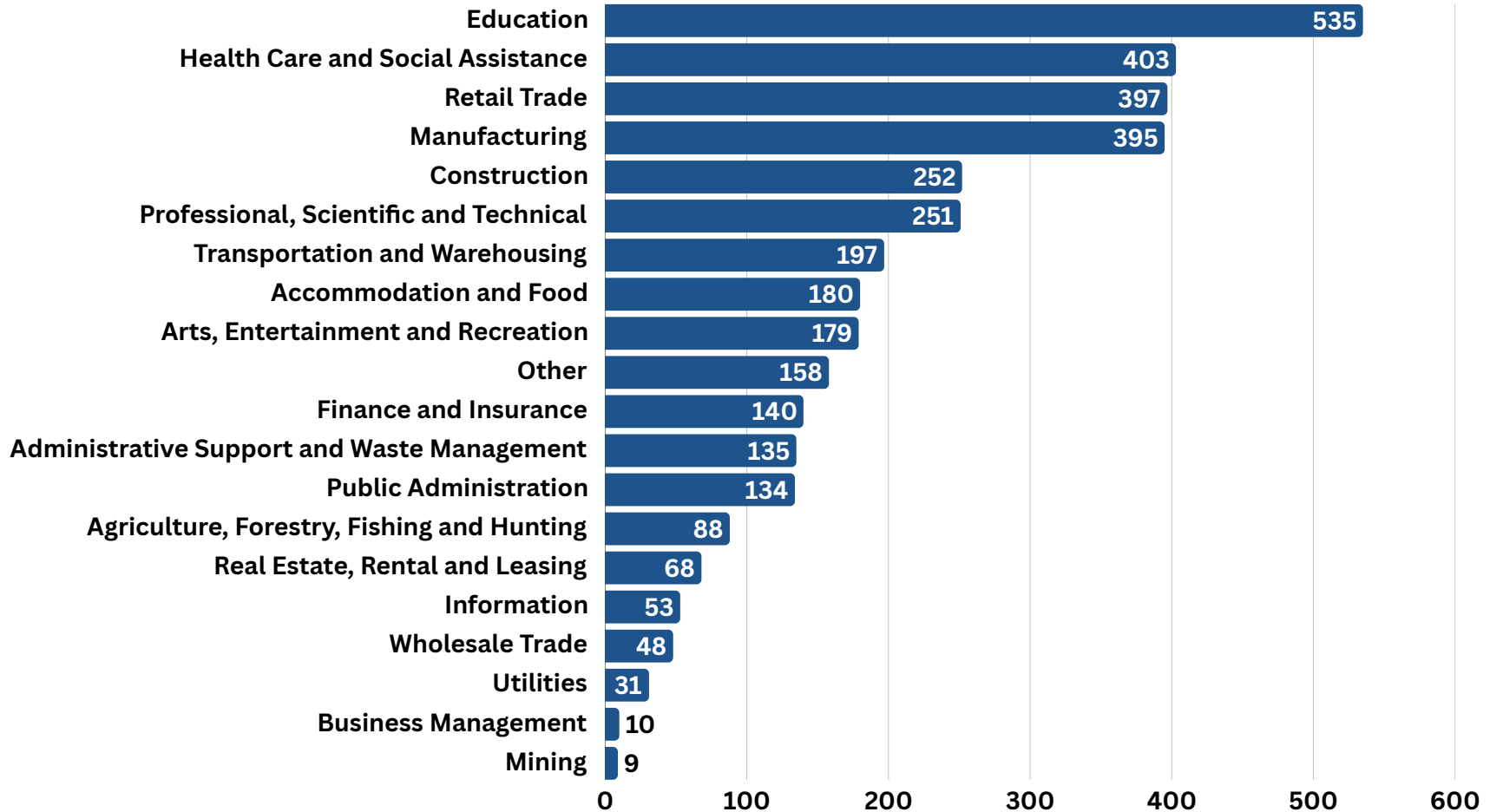
Unemployment Number



Employment Number



● 2024



CONSUMER SEGMENTATION

Categories	Segment 1	Segment 2	Segment 3	Segment 4	Segment 5
Top Tapestry Segments	Pleasantville	City Lights	Exurbanites	Green Acres	Savvy Suburbanites
% of Households	1,012 (35.9%)	874 (31.0%)	532 (18.9%)	255 (9.0%)	149 (5.3%)
Lifestyle Group	Upscale Avenues	Middle Ground	Affluent Estates	Cozy Country Living	Affluent Estates
Urbanization Group	Suburban Periphery	Urban Periphery	Suburban Periphery	Rural	Suburban Periphery
Residence Type	Single Family	Multi-Units; Single Family	Single Family	Single Family	Single Family
Household Type	Married Couples	Married Couples	Married Couples	Married Couples	Married Couples
Average Household Size	2.84	2.56	2.49	2.64	2.78
Median Age	42.6	40.2	49.5	43.8	44.1

TRADE AREAS NEARBY OSSINING

Location	Median Household Income	Median Age	Total Population	1st Dominant Segment
Holmes, NY 12531	\$120,145	45.8	3,271	Pleasantville
Poughquag, NY 12570	\$122,920	44.7	6,847	Professional Pride
Stormville, NY 12582	\$128,338	43.9	6,068	Savvy Suburbanites
Sherman, CT 06784	\$126,807	52.5	3,618	Exurbanites
Wingdale, NY 12594	\$92,490	42.6	4,020	Parks and Rec
Patterson, NY 12563	\$105,723	41.7	7,549	Pleasantville
Gaylordsville, CT 06755	\$125,655	48.1	1,132	Savvy Suburbanites
Hopewell Junction, NY 12533	\$131,598	43.5	26,175	Savvy Suburbanites
Lagrangeville, NY 12540	\$122,550	44.9	7,630	Savvy Suburbanites

The information contained in the following offering memorandum is proprietary and strictly confidential. It is intended to be reviewed only by the party receiving it from **McGrath Premier Real Estate** and it should not be made available to any other person or entity without the written consent of McGrath Premier Real Estate.

By taking possession of and reviewing the information contained herein the recipient agrees to hold and treat all such information in the strictest confidence. The recipient further agrees that recipient will not photocopy or duplicate any part of the offering memorandum. If you have no interest in the subject property, please promptly return this offering memorandum to McGrath Premier Real Estate. This offering memorandum has been prepared to provide summary, unverified financial and physical information to prospective purchasers, and to establish only a preliminary level of interest in the subject property. The information contained herein is not a substitute for a thorough due diligence investigation. McGrath Premier Real Estate has not made any investigation, and makes no warranty or representation with respect to the income or expenses for the subject property, the future projected financial performance of the property, the size and square footage of the property and improvements, the presence of absence of contaminating substances, PCBs or asbestos, the compliance with local, state and federal regulations, the physical condition of the improvements thereon, or financial condition or business prospects of any tenant, or any tenant's plans or intentions to continue its occupancy of the subject property. The information contained in this offering memorandum has been obtained from sources we believe reliable; however, McGrath Premier Real Estate has not verified, and will not verify, any of the information contained herein, nor has McGrath Premier Real Estate conducted any investigation regarding these matters and makes no warranty or representation whatsoever regarding the accuracy or completeness of the information provided. All potential buyers must take appropriate measures to verify all of the information set forth herein. Prospective buyers shall be responsible for their costs and expenses of investigating the subject property.

Call Clayton Livingston today at 914-625-4617 for property details and private showings.

Exclusively Presented by :

MCGRATH PREMIER REAL ESTATE

295 E. Main street Mt. Kisco NY 10549 | 914-625-4617 | clayton@clayton.realtor