

FOR LEASE

1109 17 AVENUE SW

VARIOUS OFFICE SPACES AVAILABLE IN BELTLINE, RANGING FROM 745 SF TO 4,000 SF, WITH EXCELLENT SIGNAGE AND AMPLE PARKING.



Alexi Olcheski
President & CEO
403 971 5167
alexi.olcheski@kpliglobal.com

Estelle Tran
Managing Director
403 993 2898
estelle.tran@kpliglobal.com

Anastasiya Gryshchenko
Vice President
403 888 1748
anastasiya.gry@kpliglobal.com

KPLI
GLOBAL



PROPERTY OVERVIEW

OVERVIEW

NET RENT	Market Rates
OPERATING COSTS (2026 ESTIMATE)	\$19.00 PSF
TERM	1-5 Years
PARKING	23 Underground Stalls 10 Surface Visitor Stalls
YEAR BUILT	1981
FLOORS	4
SIGNAGE	Pylon Signage on 17 th Avenue

AVAILABILITES

SECOND FLOOR	
Suite 201	745 sf
Suite 202	1,139 sf
THIRD FLOOR	
Suite 302	1,394 sf
Suite 303	1,405 af
Suite 306	3,307 sf
PENTHOUSE	
Suite 400	4,295 sf

PROPERTY HIGHLIGHTS

SUITE SIZES

Various options available from 660 SF to 4,000 SF



PARKING

Ample options including underground, surface, and street



LOCATION

Prime setting in the heart of Beltline on 17th Avenue



MOVE IN READY

Move-in ready spaces



SIGNAGE

High-visibility pylon signage available



AMENITIES

Surrounded by numerous nearby amenities



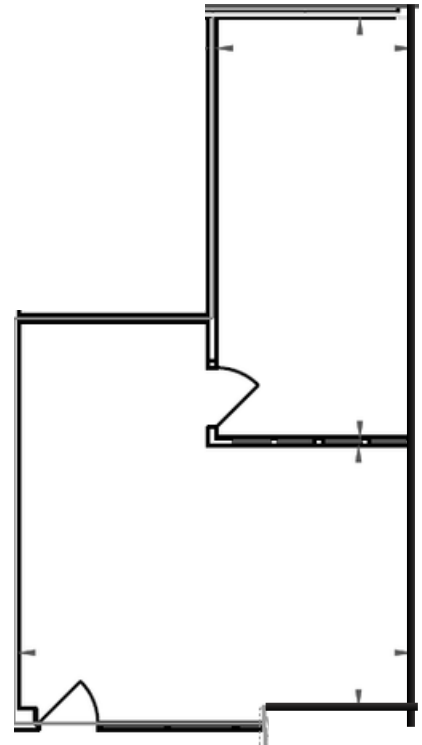


SECOND FLOOR

SUITE 201

745 SF

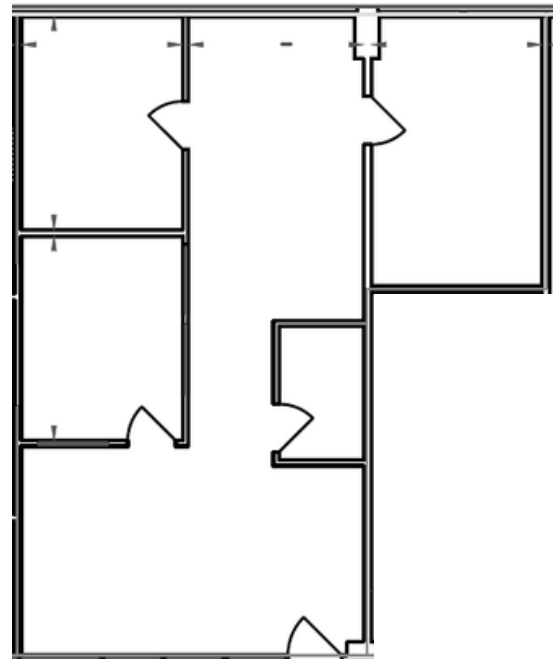
- Reception area
- 1 Office
- Open area



SUITE 201

1,139 SF

- 3 Offices
- Storage room
- Reception area

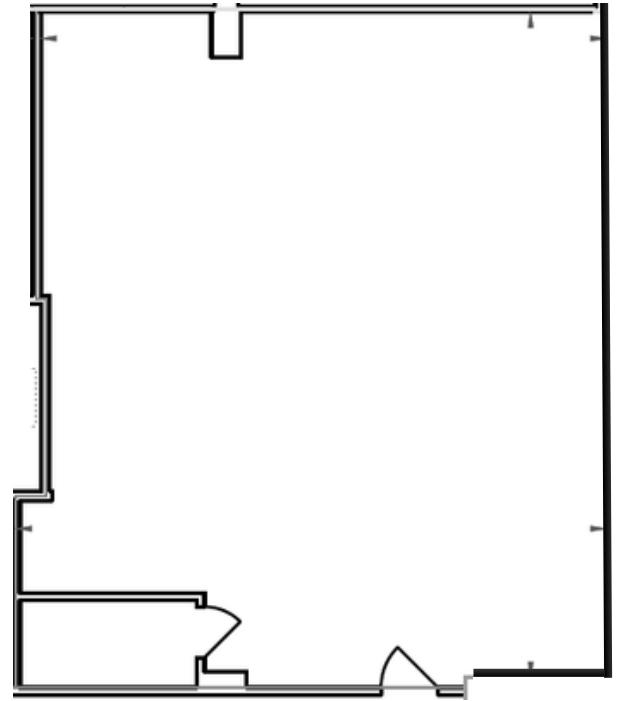


THIRD FLOOR

SUITE 302

1,394 SF

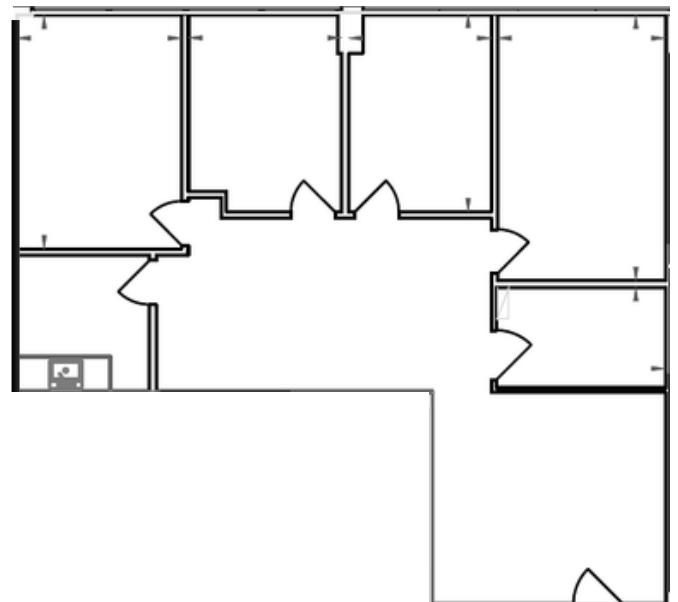
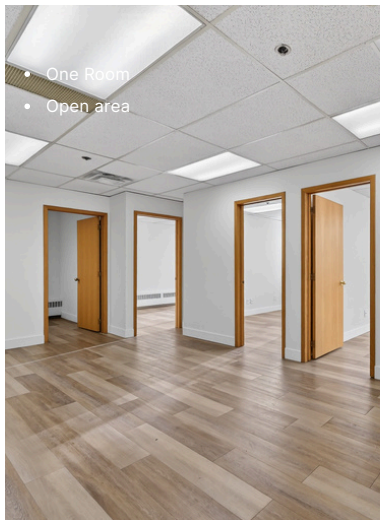
- Reception area
- Server room
- Open area



SUITE 303

1,405 SF

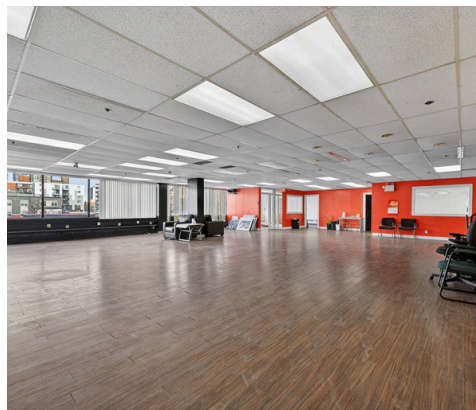
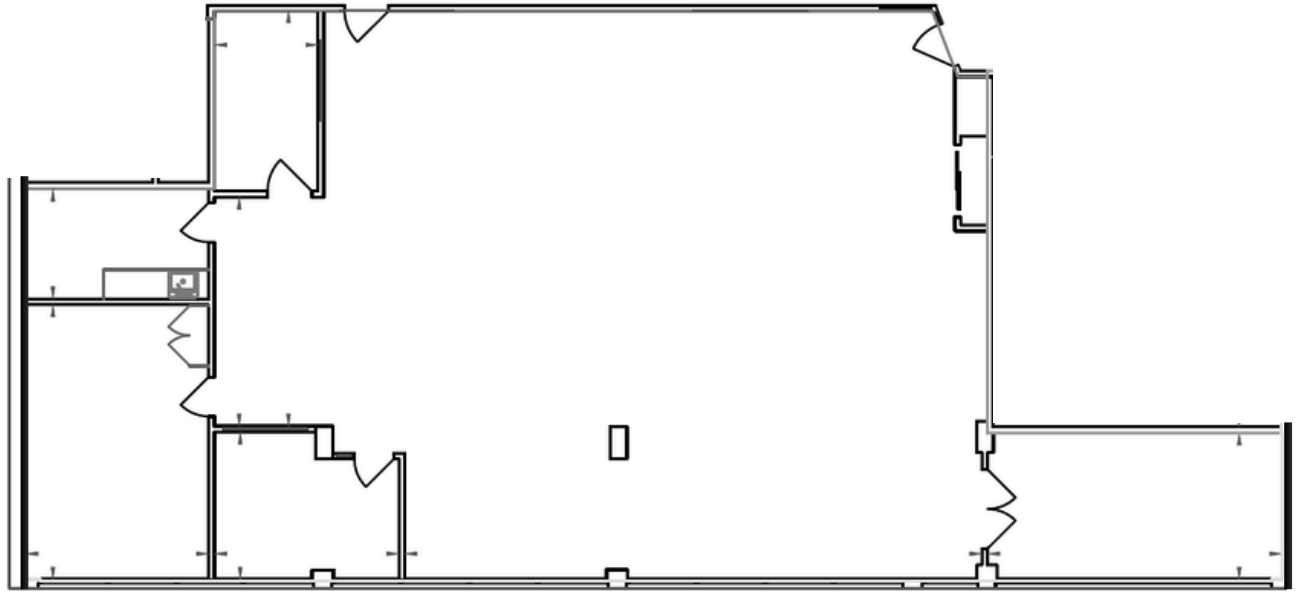
- Reception area
- 4 Offices
- Storage
- Kitchen



THIRD FLOOR

SUITE 305 3,307 SF

- Open area
- Kitchen
- 2 Offices
- Boardroom

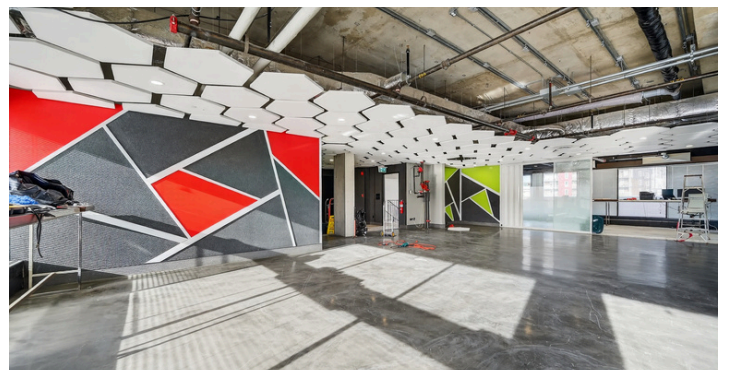
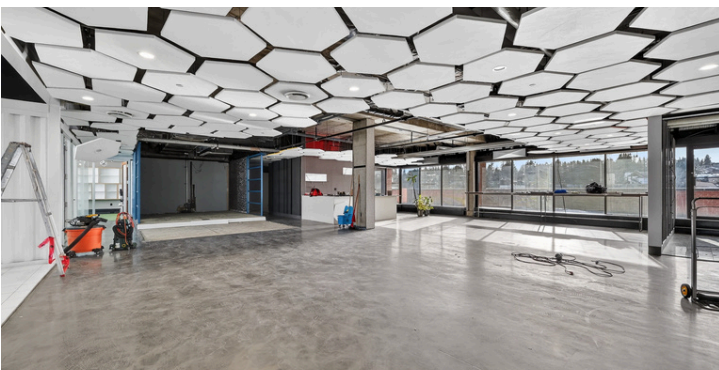
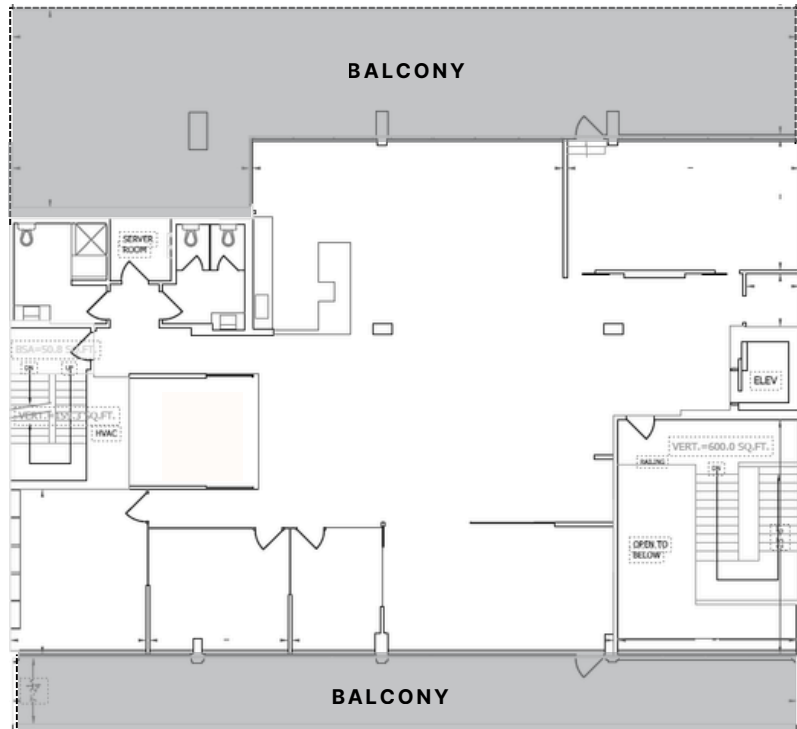


PENTHOUSE

SUITE 400

4,295 SF

- Open area
- 4 Offices
- Kitchen
- Storage
- Washrooms/Shower
- 2 Balconies





1109 17 AVENUE SW

CONTACT US FOR MORE INFORMATION



Alexi Olcheski

President & CEO

403 971 5167

alexi.olcheski@kpliglobal.com



Estelle Tran

Managing Director

403 993 2898

stelle.tran@kpliglobal.com



Anastasiya Gryshchenko

Vice President

403 888 1748

anastasiya.gry@kpliglobal.com

