

# WESTLAKE PARK PLACE



2915 | 2931 | 2945 | 3011  
3027 | 3043 | 3059 | 3075

TOWNSGATE ROAD  
WESTLAKE VILLAGE, CA



THE CONEJO VALLEY'S PREMIER OFFICE ADDRESS





2945	
SUITE	SIZE
Suite 130*	±4,798 RSF
Suite 140*	±3,536 RSF

\*Suites 130 & 140 contiguous to ±8,334 RSF

3011	
SUITE	SIZE
Suite 450	±5,595 RSF

3075	
SUITE	SIZE
Suite 160	±4,275 RSF

3027	
SUITE	SIZE
Suite 110	±3,222 RSF

Spec Suite

## Property Highlights & Amenities



Asking rate:  
\$4.50 FSG



Excellent  
freeway access  
and visibility



Free surface  
parking



Outdoor common  
area with BBQs,  
seating, TV & WiFi



Tenant exclusive  
fitness center



Amenity-rich  
environment with  
on-site property  
management and  
nearby retail



Renovated  
lobbies and  
common areas

# COURTYARD



# FITNESS CENTER

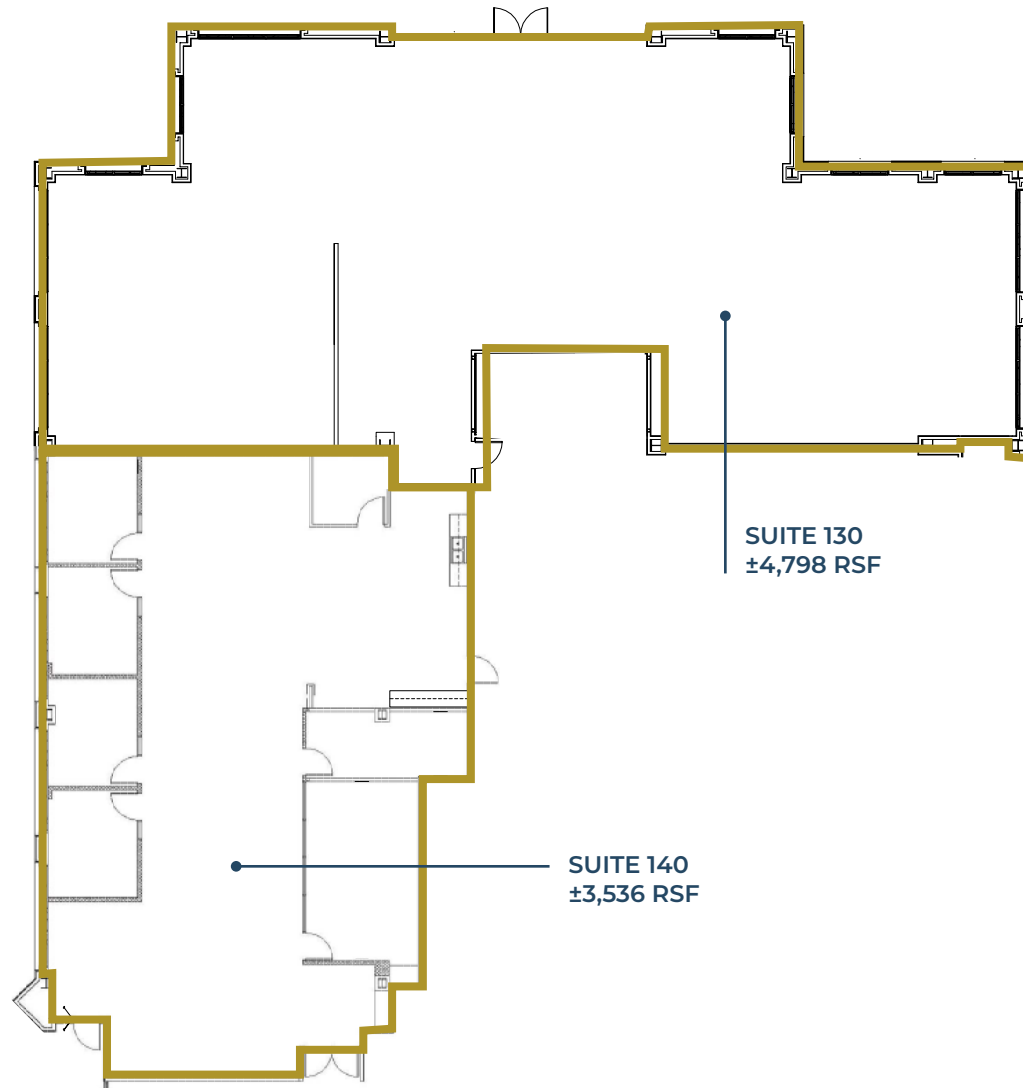


Floor Plan  
**2945**  
TOWNSGATE ROAD

**FIRST FLOOR**

SUITES 130 & 140 CONTIGUOUS TO ±8,334 RSF

[Click to View Suite 140](#)



SUITE 130  
±4,798 RSF

SUITE 140  
±3,536 RSF

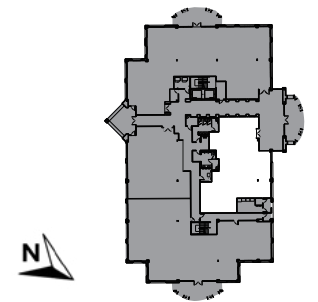
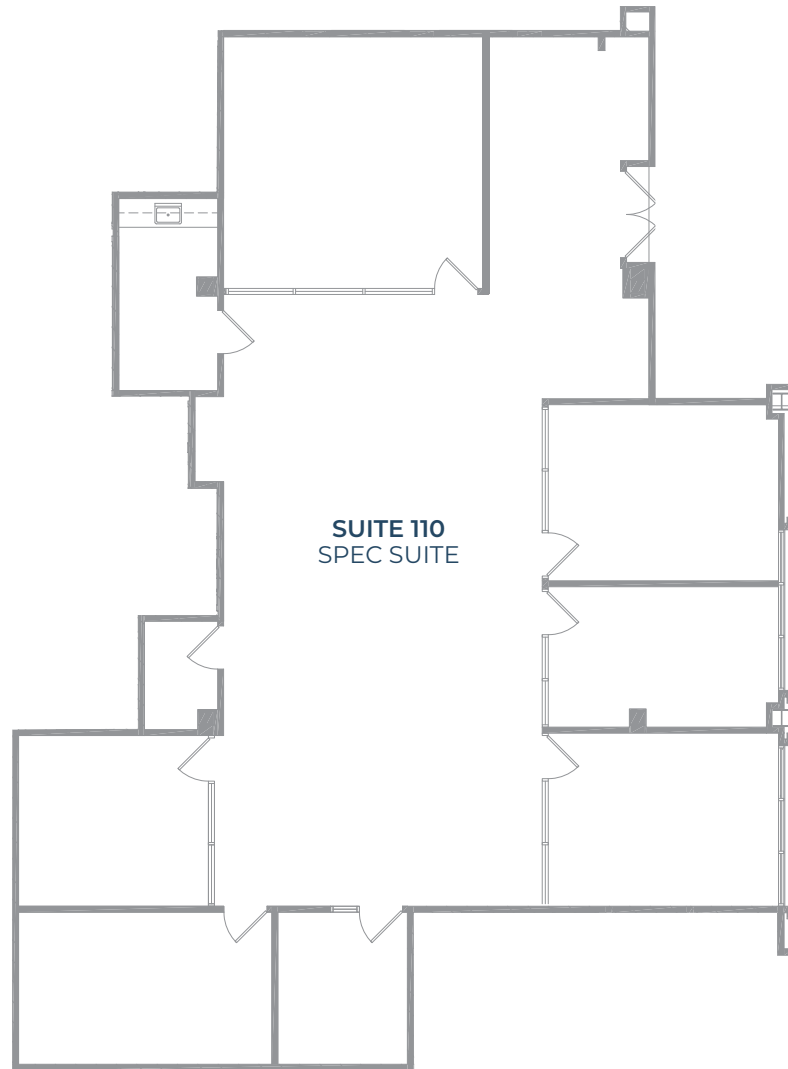




Floor Plan  
**3027**  
TOWNSGATE ROAD

---

**FIRST FLOOR**  
SUITE 110 – ±3,222 RSF



# Floor Plan

## 3075

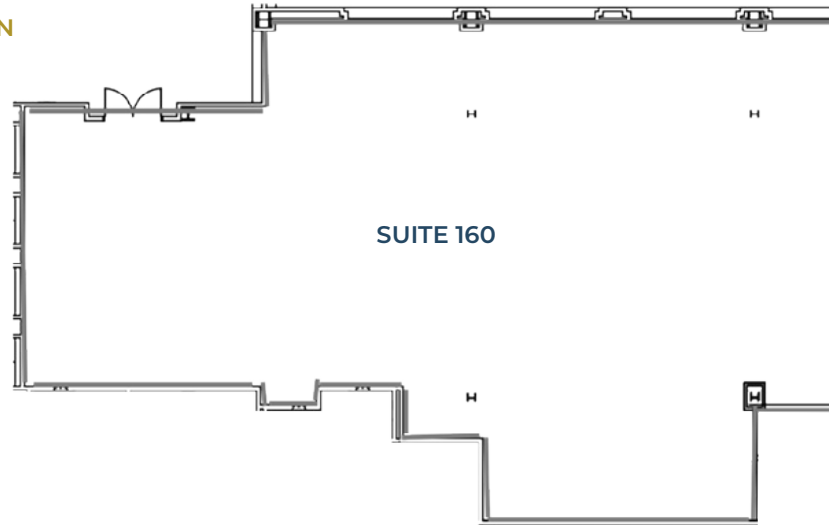
### TOWNSGATE ROAD

FIRST FLOOR

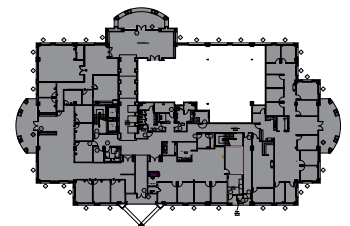
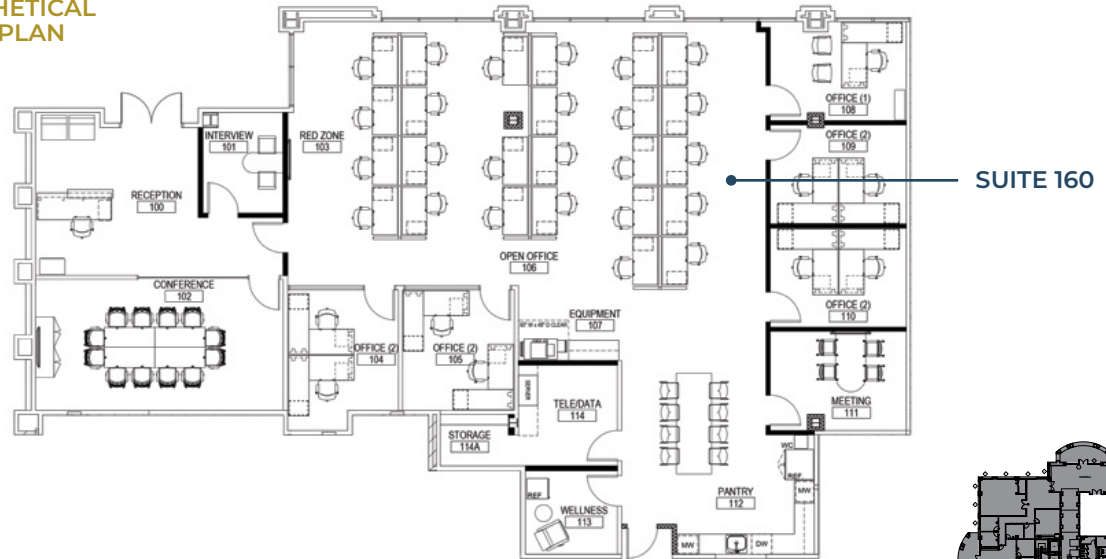
SUITE 160 – ±4,275 RSF

[Click to View Photos](#)

AS-BUILT  
FLOOR PLAN



HYPOTHETICAL  
FLOOR PLAN



# AERIAL MAP

## WESTLAKE PARK PLACE

HYATT  
REGENCY

US  
101

Brent's

TOWNSGATE RD

WESTLAKE BLVD

### WESTLAKE PLAZA AND CENTER



### WESTLAKE COMMONS



# WESTLAKE PARK PLACE

2915 | 2931 | 2945 | 3011  
3027 | 3043 | 3059 | 3075

TOWNSGATE ROAD  
WESTLAKE VILLAGE, CA

---

## THE CONEJO VALLEY'S PREMIER OFFICE ADDRESS



This document/email has been prepared by Colliers for advertising and general information only. Colliers makes no guarantees, representations, or warranties of any kind, expressed or implied, regarding the information including, but not limited to, warranties of content, accuracy, and reliability. Any interested party should undertake their own inquiries as to the accuracy of the information. Colliers excludes unequivocally all inferred or implied terms, conditions and warranties arising out of this document and excludes all liability for loss and damages arising there from. This publication is the copyrighted property of Colliers and/or its licensor(s). © 2026. All rights reserved. This communication is not intended to cause or induce breach of an existing listing agreement. Colliers International Greater Los Angeles, Inc.

## Integrated Advisory Services Team

---

### Contact Us

#### DAVID SOLOMON

Lic. 01209699  
+1 818 937 4545  
david.solomon@colliers.com

#### MATTHEW HEYN

Lic. 01306148  
+1 818 334 1860  
matt.heyn@colliers.com

#### CAITLIN HOFFMAN

Lic. 01935762  
+1 818 334 1850  
caitlin.hoffman@colliers.com

