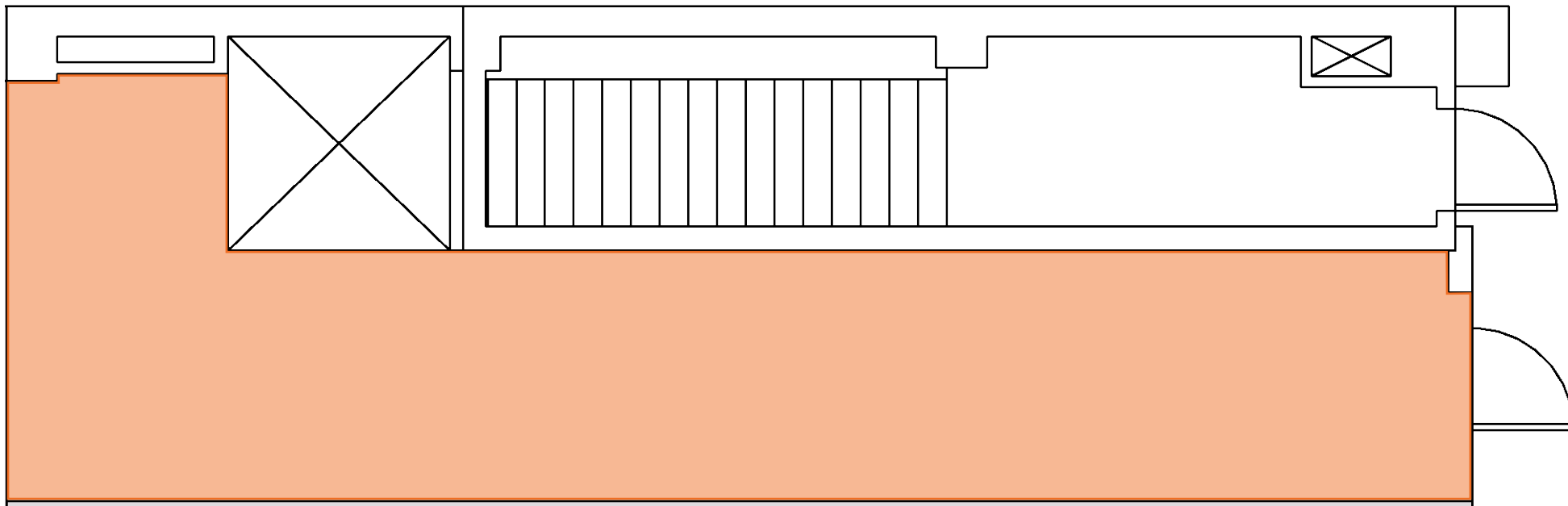


8 WEST 38TH STREET

BETWEEN 5TH & 6TH AVENUES | MIDTOWN

FLOOR PLANS:
GROUND FLOOR - 420 SF



8 WEST 38TH STREET

BETWEEN 5TH & 6TH AVENUES | MIDTOWN

FLOOR PLANS:
LOWER LEVEL - 5,492 SF (DIVISIBLE)

