



# MERESTONE AT CASCADES

414 E. Bloxham Street  
Tallahassee, FL 32301

3,320 SF FOR LEASE  
**CLASS A EXECUTIVE OFFICE**

JOIN TENANTS

**HCA**   
Healthcare

**Artia**  
SOLUTIONS

**HCA**   
Healthcare

**Artia**  
SOLUTIONS

**KPMG**

**AVAILABLE**

# 3,320 SF FOR LEASE CLASS A EXECUTIVE OFFICE

## AVAILABILITY

- **FOURTH FLOOR - SUITE A - 3,320 SF**

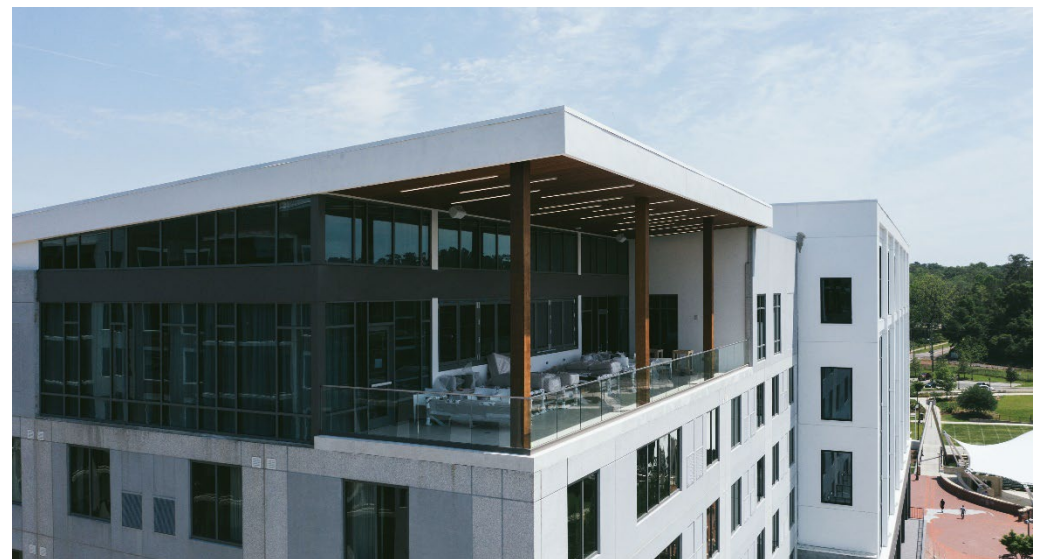
**Lease Rates Negotiable**

## SPECS

- 73,014 SF of Office, Retail, Restaurant Space
- 5 acre mixed-use project
- 7 stories
- First A Class Office Space in the Market
- Community Spaces

## AMENITIES

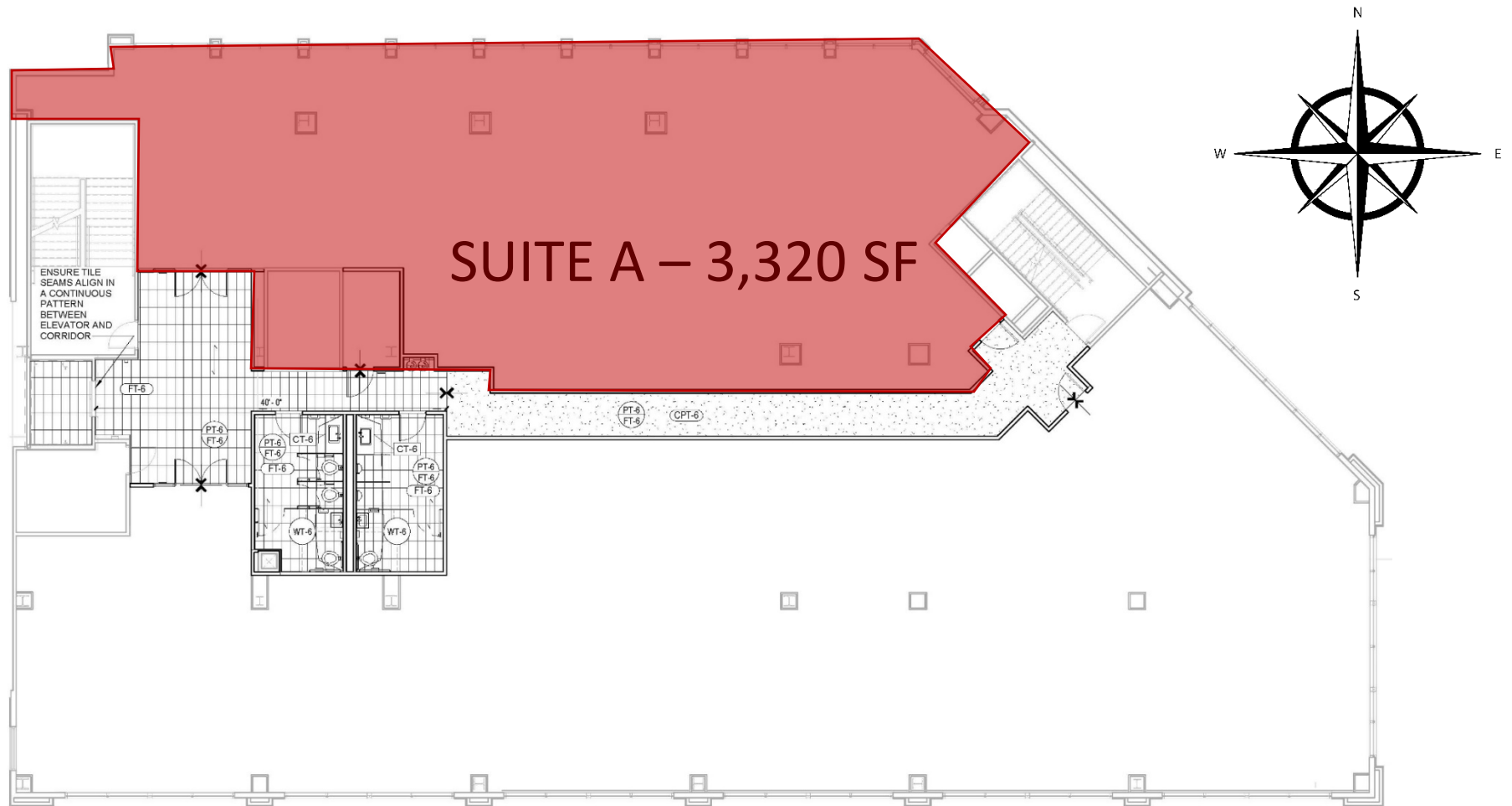
- AC by Marriott
- Charlie Park Rooftop Bar and Restaurant
- Shuttle to Capitol Complex
- Ground Floor Retail and Restaurants
- Cascades Park views



3,320 SF FOR LEASE  
**CLASS A EXECUTIVE OFFICE**

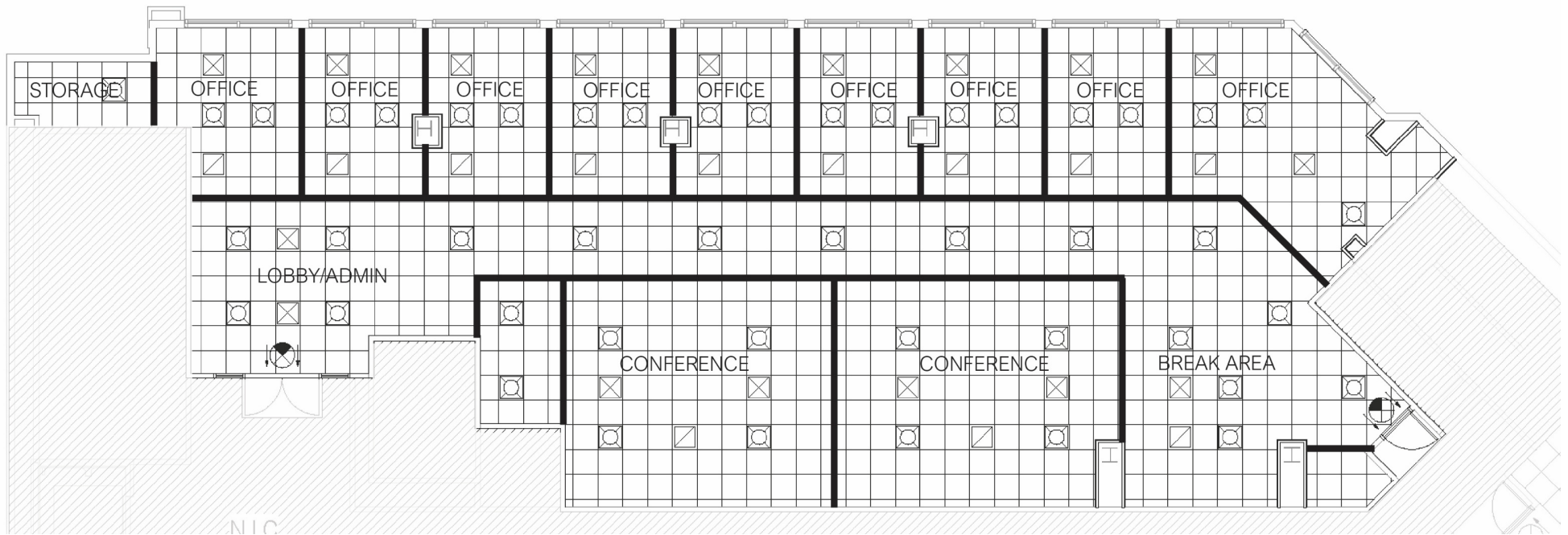


# 3,320 SF FOR LEASE CLASS A EXECUTIVE OFFICE

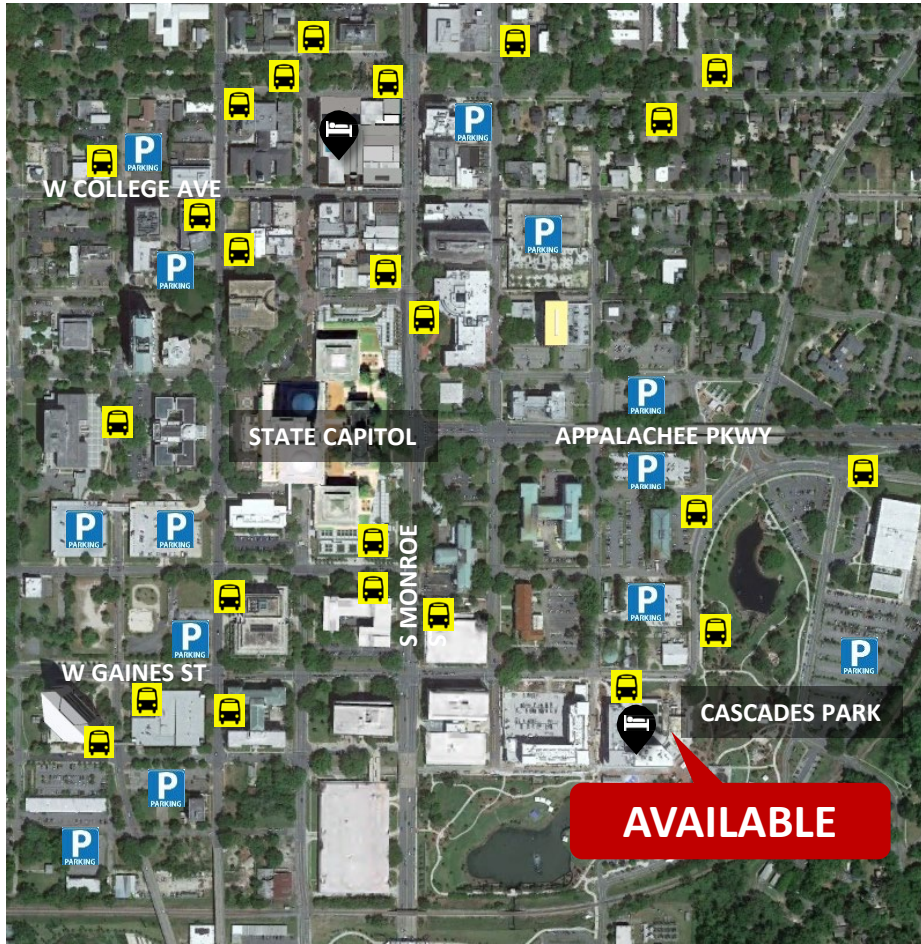



3,320 SF FOR LEASE  
**CLASS A EXECUTIVE OFFICE**

# FLOOR PLAN MOCK UP



# 3,320 SF FOR LEASE CLASS A EXECUTIVE OFFICE



 = HOTELS    
  = PARKING    
  = BUS STOPS



**6.3 Miles**  
To the Tallahassee  
International Airport



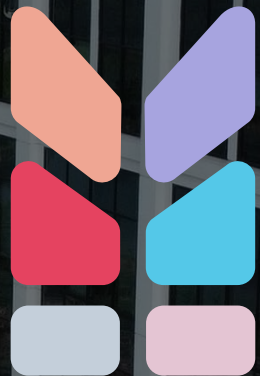
**1.2 Miles**  
To the Florida State  
Capitol Building

# 3,320 SF FOR LEASE CLASS A EXECUTIVE OFFICE



CHARLIE PARK  
AC HOTELS  
MARRIOTT  
HCA Healthcare  
Artia SOLUTIONS

**AVAILABLE**



# MERESTONE

**NAI**TALCOR



**E. Edward Murray, Jr., SIOR, CCIM**

NAI Director / President / Broker  
**NAI TALCOR**

o: 850.224.2300

f: 850.425.1114

c: 850.566.9088

[murray@talcor.com](mailto:murray@talcor.com)

NAI TALCOR

1018 Thomasville Road, Suite 200A

Tallahassee, Florida 32303

+1 850 224 2300

[TALCOR.COM](http://TALCOR.COM)

©2018 NAI TALCOR

The contents of this proposal are intended for the individuals to whom it is presented or delivered and their company associates. Any dissemination or replication, without the express authorization of NAI TALCOR, is strictly prohibited.