

# Faraday Wharf

A self contained option, just off the A38 with ample carparking and storage options.

10 Holt Street, Birmingham B7 4BB

**bruntwood**  
SciTech

# Come and join the network

Faraday Wharf is part of the thriving Innovation Birmingham campus which is home to a vibrant community of over 120 digital tech start-ups, scale ups and large corporations.

It's easy to adapt and grow in this innovative environment. Whatever your style of working, we will work with you to create a space that suits you and your team.

We've created the type of environment that people genuinely enjoy working from. We bring our communities together regularly at social events so you'll be rubbing shoulders with Birmingham's finest.



# A Connected Hub

Faraday Wharf is colocated alongside Aston and Birmingham City universities, as well as being well connected to the road network neatly positioned on one of the major routes into the city. For those wishing to get the train, it's only a fifteen minute walk to major train stations.

In addition, the city's shopping, leisure and cultural amenities are close at hand, plus easy access onto the Aston expressway and then wider motorway network puts the NEC and Birmingham Airport both within a 20-minute drive.

## Amenities

### Shopping & Leisure

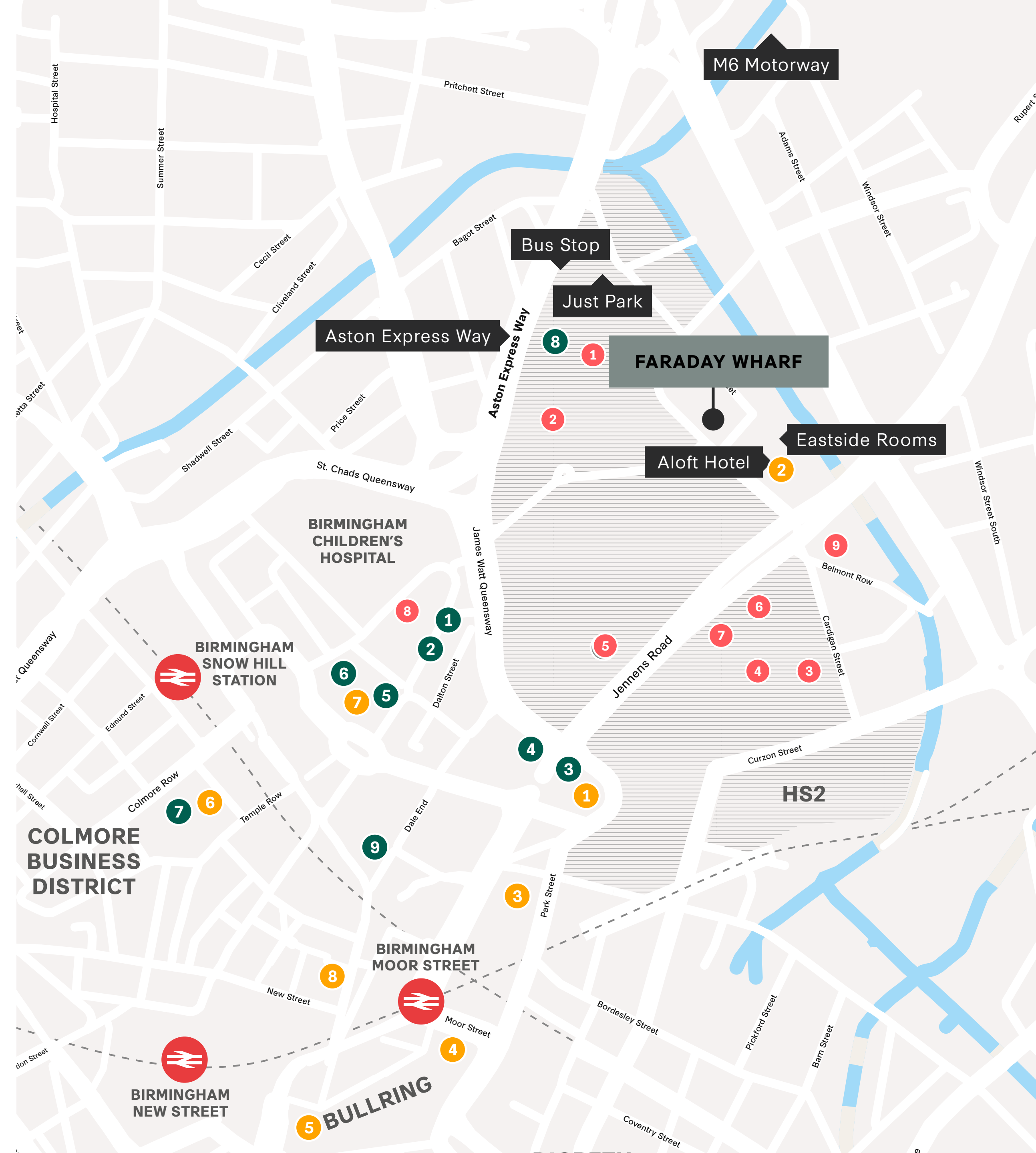
- 1 Premier Inn
- 2 Aloft
- 3 Clayton Hotel
- 4 Selfridges
- 5 Bull Ring
- 6 Great Western Arcade
- 7 Snow + Rock
- 8 The Gym Group

### Eating & Drinking

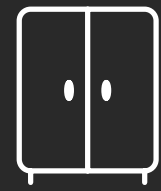
- 1 Boston Tea Party
- 2 Perch
- 3 Bar and Block
- 4 Co-op
- 5 Sainsbury's
- 6 Philpotts
- 7 Pret A Manger
- 8 Tesco Express
- 9 Subway

### Leading Institutions

- 1 Aston University
- 2 Aston Business School
- 3 Birmingham City University
- 4 Millennium Point
- 5 Birmingham Metropolitan College
- 6 Royal Birmingham Conservatoire
- 7 Birmingham Ormiston Academy
- 8 Birmingham Magistrates' Court
- 9 Steamhouse



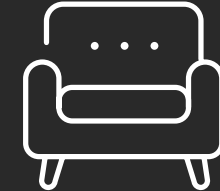
# Specification



Secure storage options



Onsite cafe



Business lounge



Excellent connectivity



Meeting room



City centre location



WiFi



Canalside location



Breakout space



Secure cycle storage



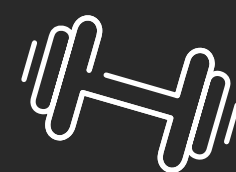
Easy access to A38



24 hour fob access



Showers and changing facilities



Gym



Concierge facilities



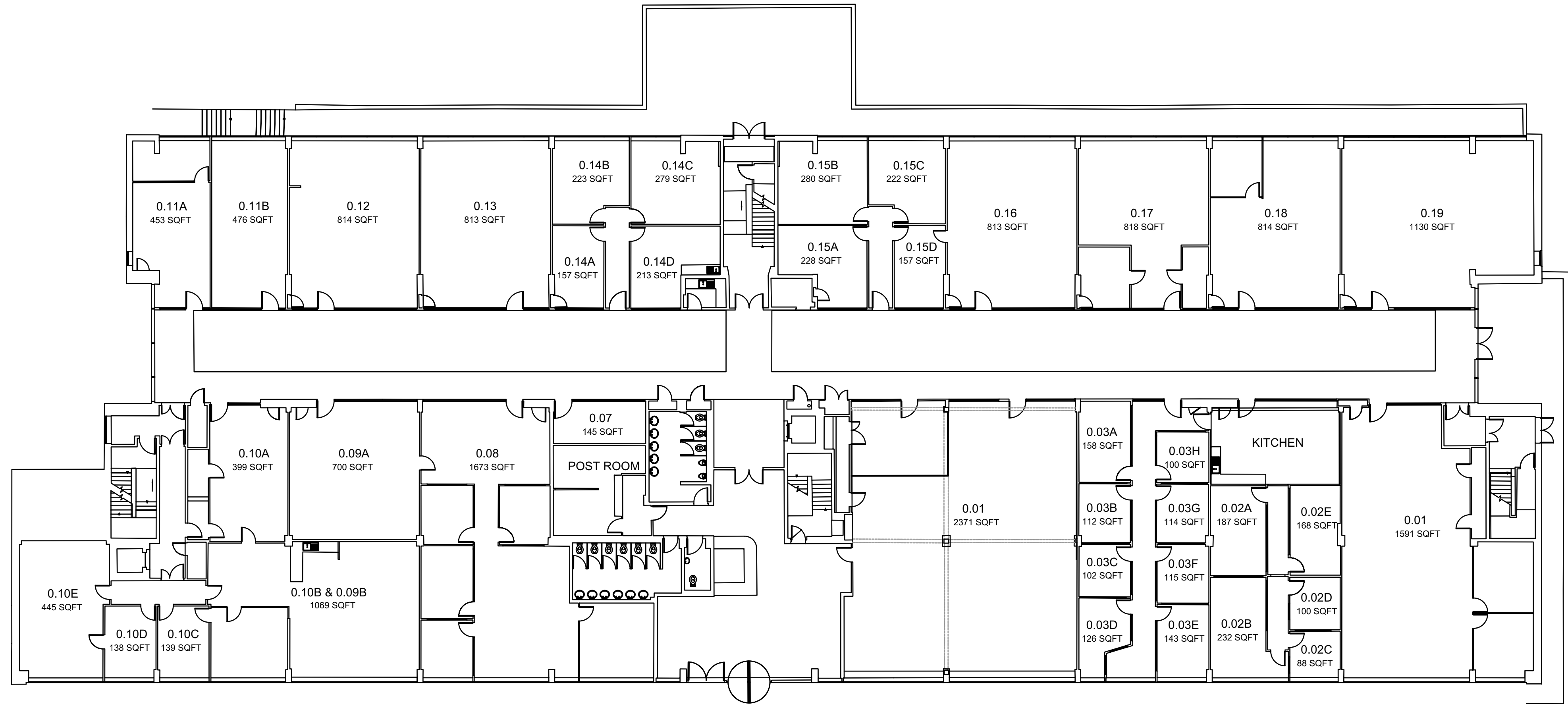
Secure underground car park



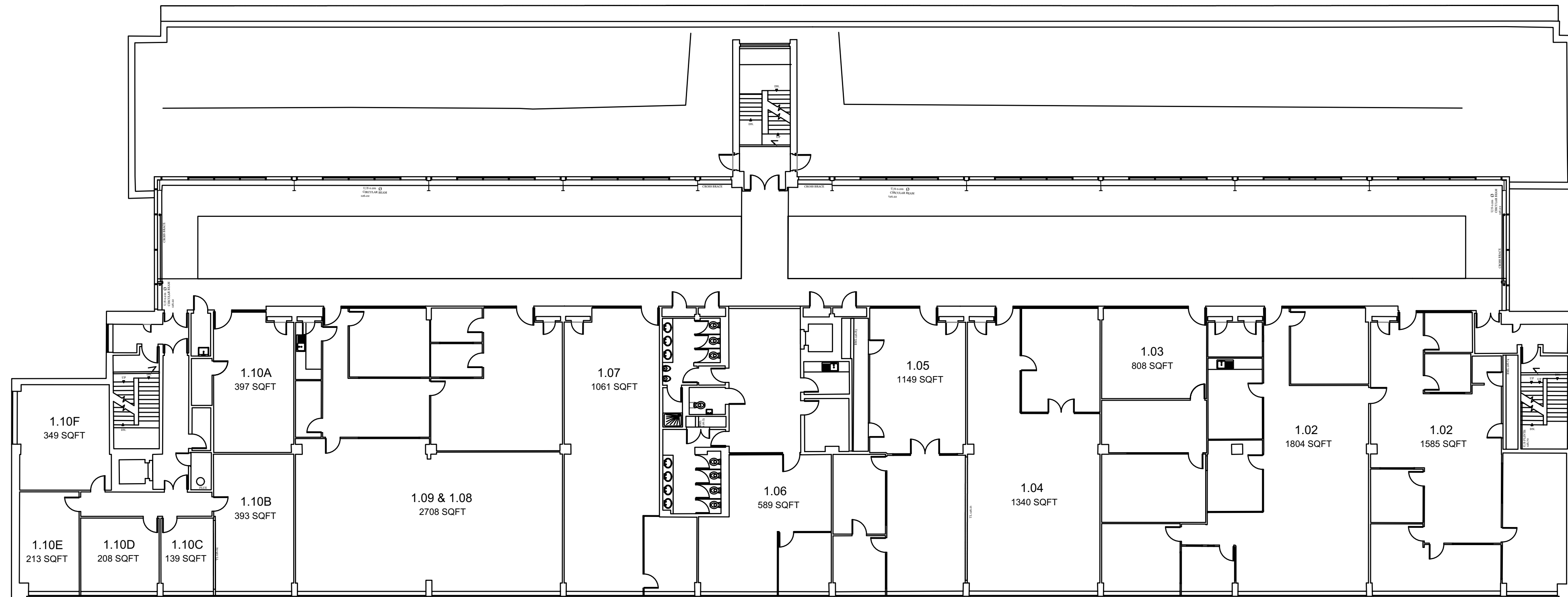


State-of-the-art complimentary gym on campus

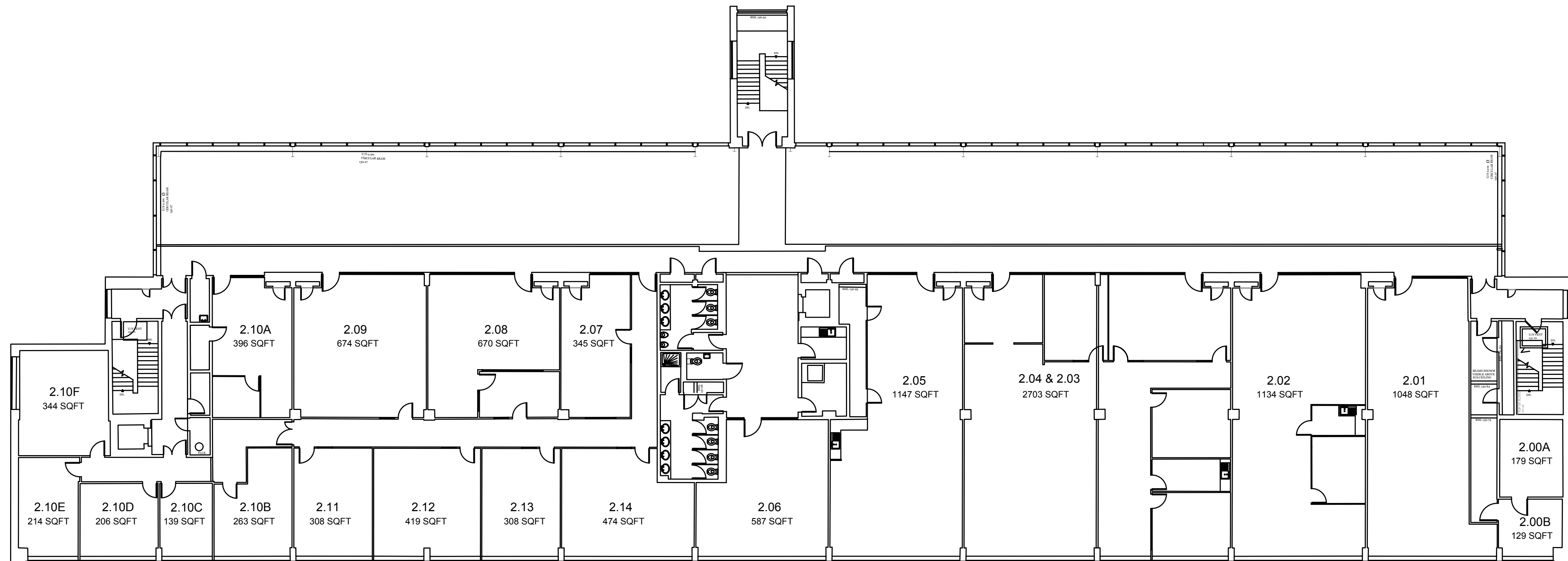
# Ground floor



# First floor



# Second floor



Being based within the Bruntwood SciTech portfolio in Birmingham means that your business becomes part of a citywide portfolio of companies, providing access to an extended range of spaces and facilities, including event space, outdoor spaces and meeting rooms from £25 per hour.

## Centre City

7 Hill St, Birmingham, B5 4UA



\*Meeting room capacity:  
1x6/1x10/1x16 person

Event space:  
Post 5pm - atrium

Gym: Yes

Co-working: Yes

Cafe: Yes

## Cornerblock

2 Cornwall St, Birmingham B3 2DX



\*Meeting room capacity:  
1x12/1x10/1x16 person

Event space:  
Rooftop Garden

Gym: Yes

## Mclaren

46 The Priory Queensway, Birmingham B4 7LR



\*Meeting room capacity:  
1x6 person

Event space:  
Post 5pm - reception

Gym: Yes

Co-working: Yes

## Cornwall Buildings

45 Newhall St, Birmingham B3 3QR



\*Meeting room capacity:  
1x4/1x5/1x10 person

Event space:  
Post 5pm - reception

Gym: Yes

Co-working: Yes

## Innovation Birmingham

Holt St, Birmingham B7 4BB



\*Meeting room capacity:  
3x14 person

Event space:  
Yes, up to 30 people

Gym: Yes

Co-working: Yes

## No1 BHIC

Selly Oak, Birmingham, B29 6SJ



\*Meeting room capacity:  
2x6/2x16 person

Event space:  
Post 5pm - amphitheatre

Co-working: Yes

Cafe: Yes

\*Facilities : HD wireless presentation screens, superfast wifi, dedicated reception team, communal kitchens with premium refreshments

# A national network

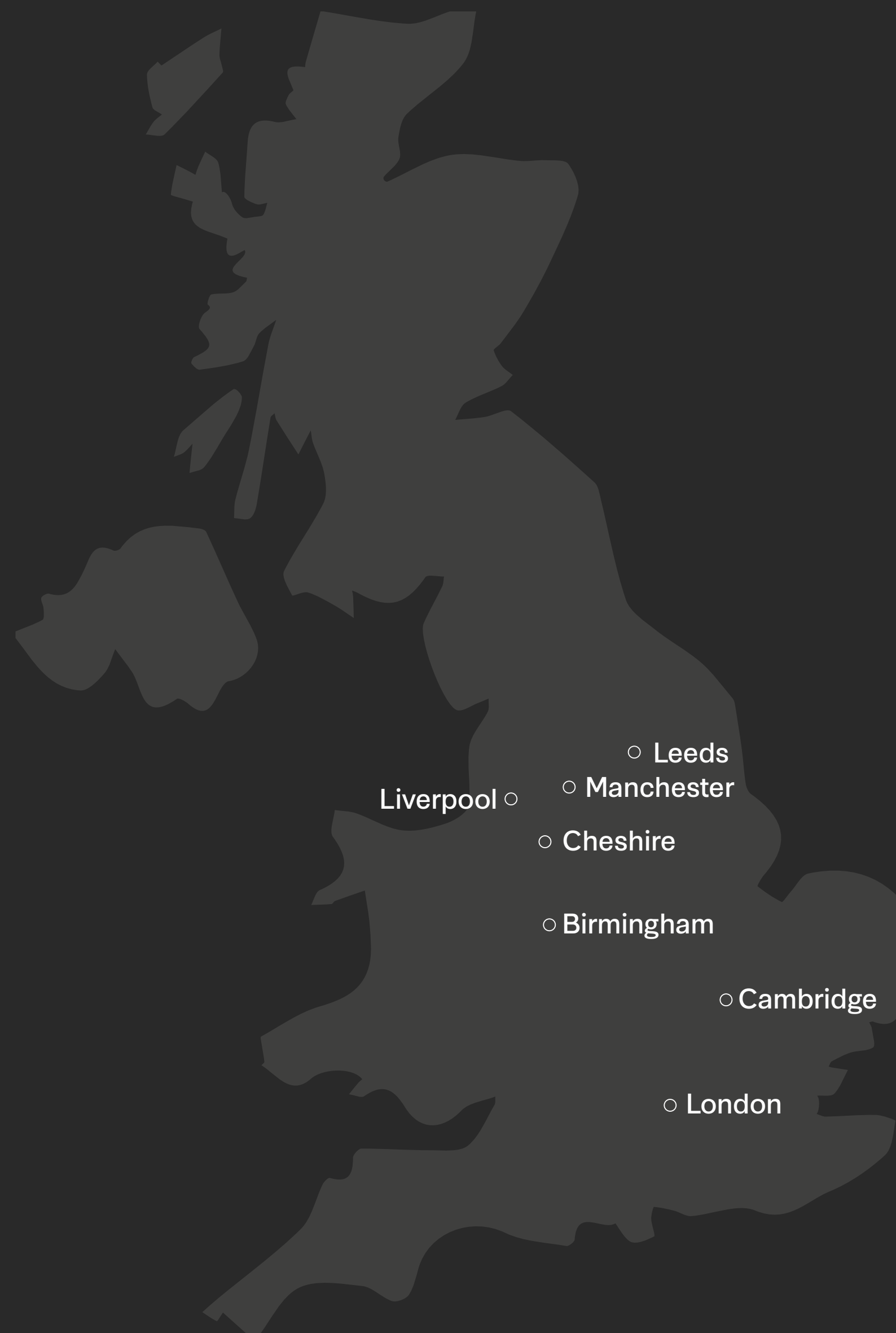
Bruntwood SciTech is the UK's leading developer of city-wide innovation ecosystems and specialist environments, helping companies - particularly those in the science and technology sectors - to form, scale and grow.

We create and develop strategic partnerships with UK regional cities, universities and NHS Trusts to drive economic growth.

Our campus locations include Alderley Park in Cheshire; Innovation Birmingham; Birmingham Health Innovation Campus in partnership with the University of Birmingham; Melbourn Science Park in Greater Cambridge; West Village in Leeds; White City Deep Tech Campus in London; Liverpool Science Park as a shareholder in Sciontec Liverpool; and a cluster in the heart of Manchester's

Oxford Road Corridor knowledge quarter - Manchester Science Park, Citylabs in partnership with Manchester University NHS Foundation Trust (MFT), Circle Square - a joint venture with Vita Group; and a £1.7bn JV partnership with The University of Manchester - Sister.

Our city centre innovation hubs include Bloc, 111 Piccadilly, Bond, Blackfriars and Pall Mall in Manchester; Platform in Leeds; Cornerblock, Centre City, McLaren and Cornwall Buildings in Birmingham; and The Plaza in Liverpool.



# Our customer portfolio



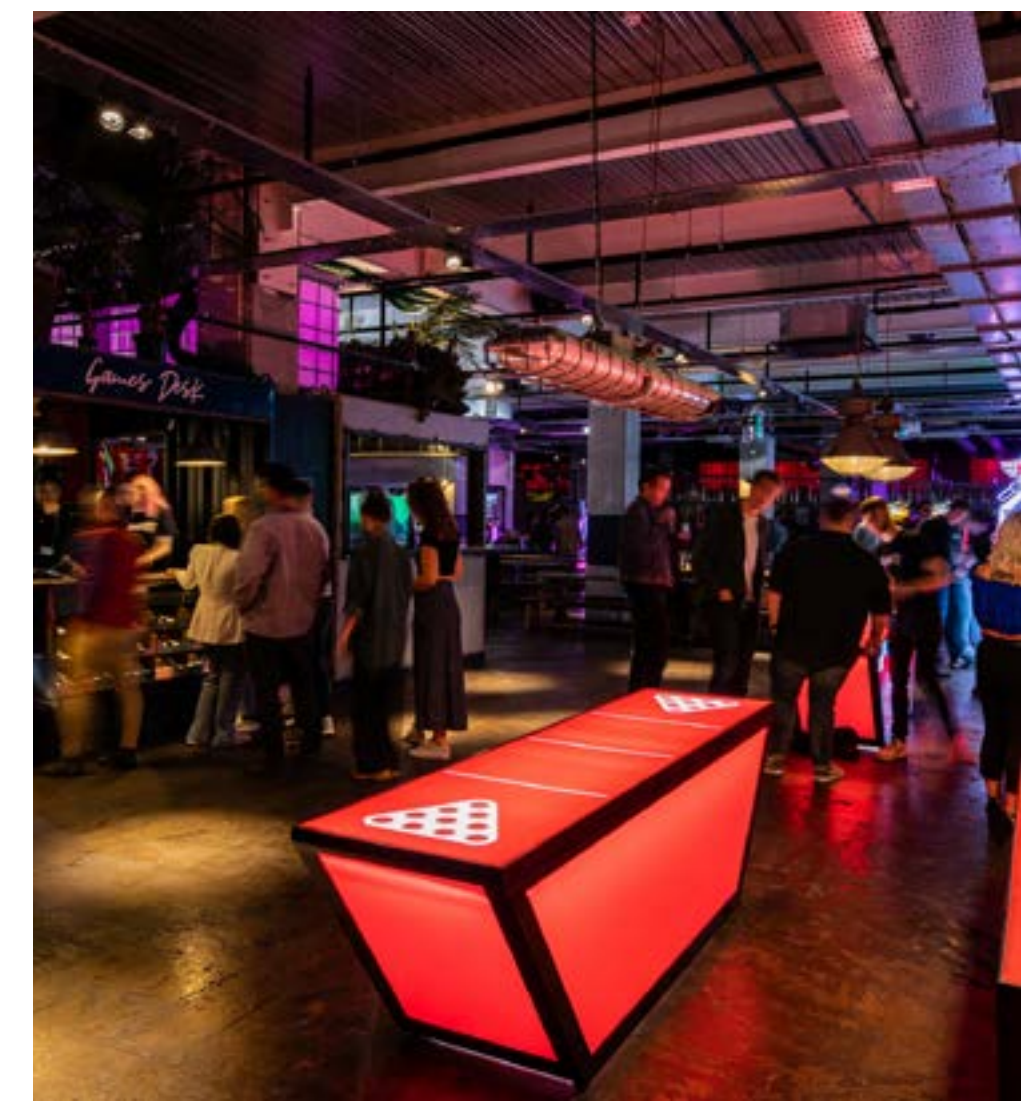
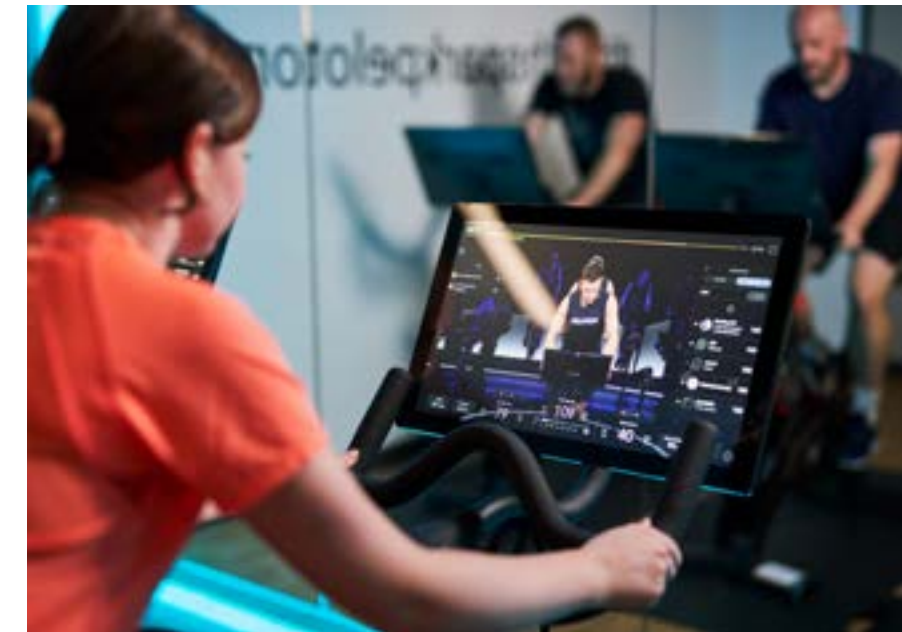
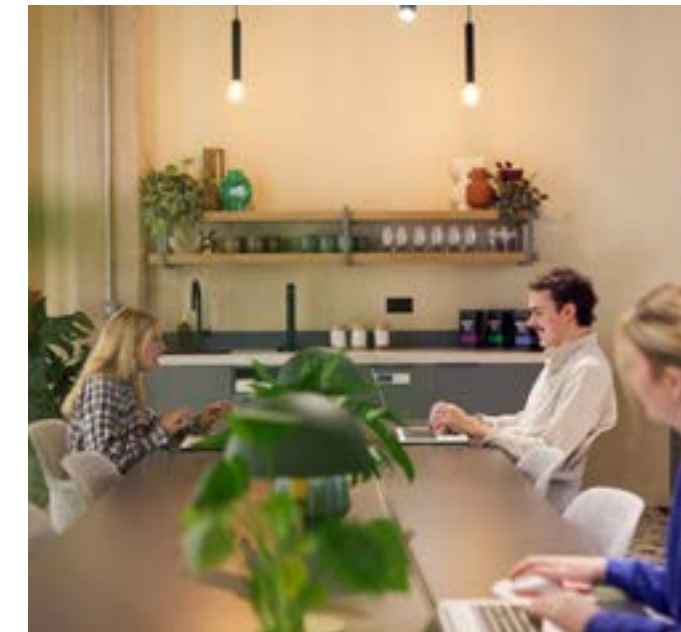
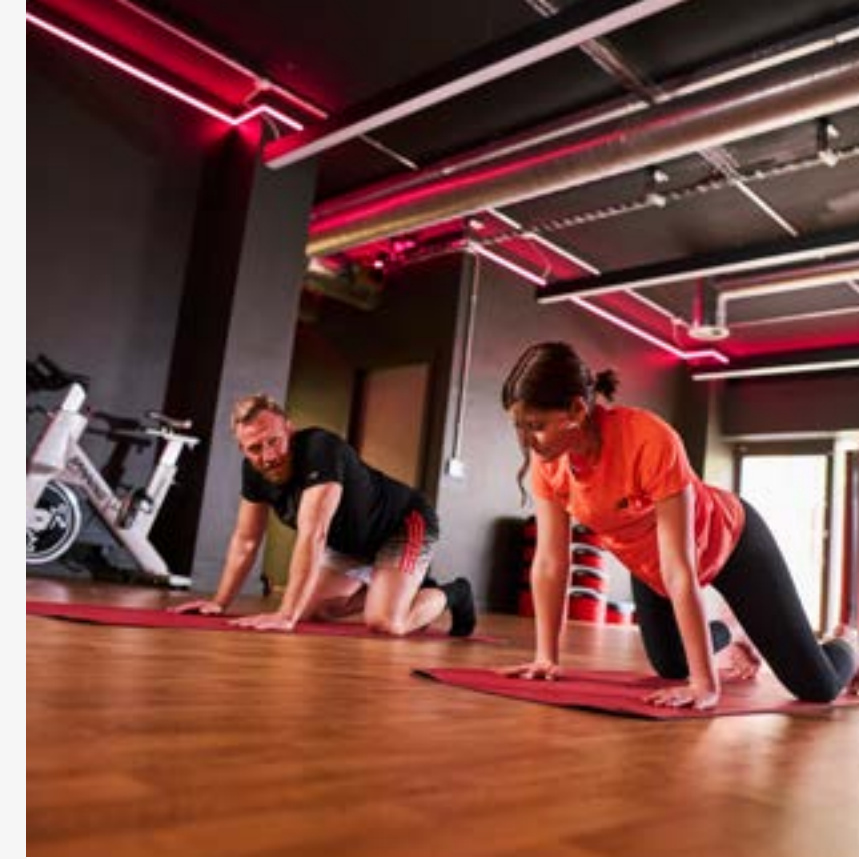
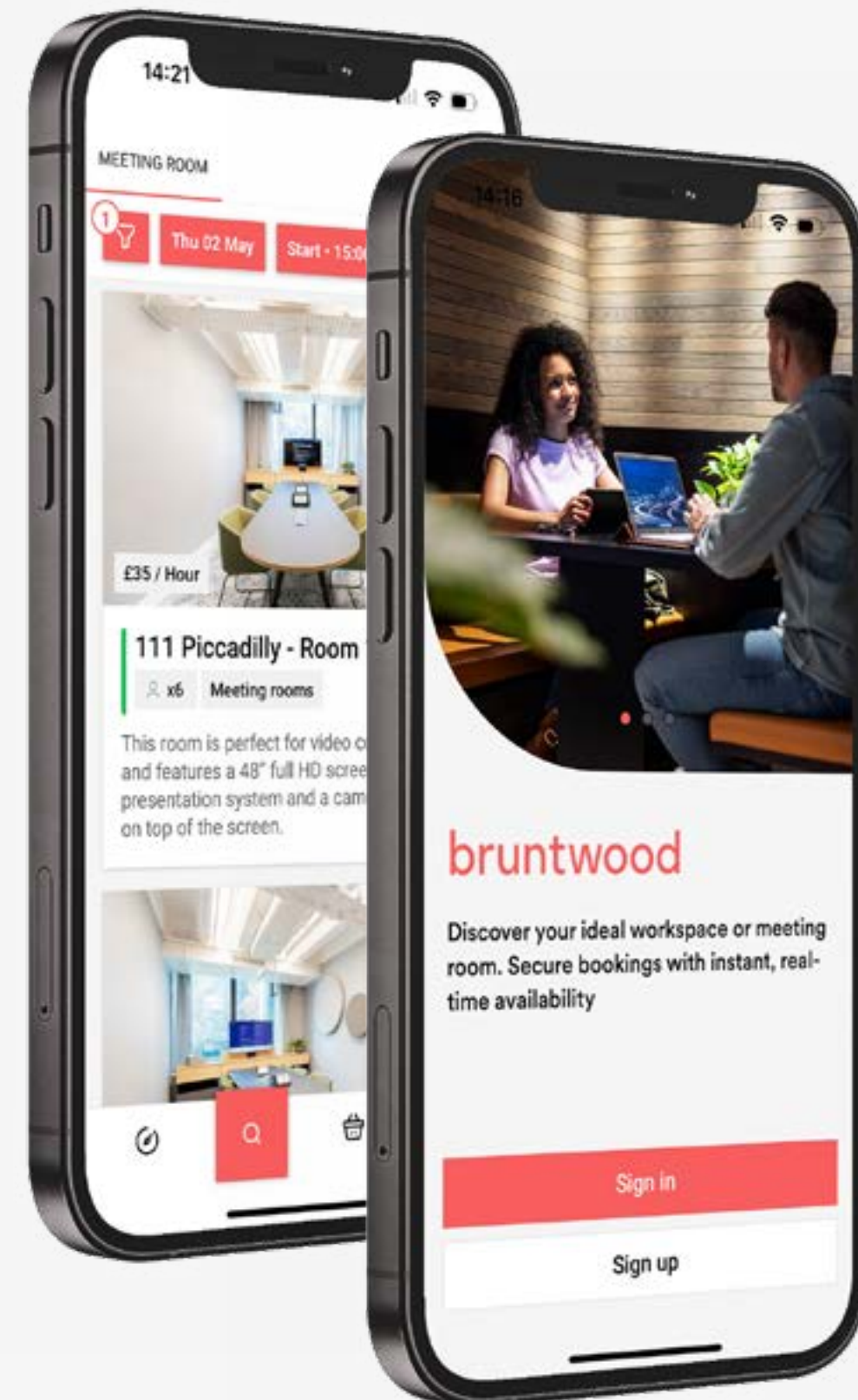
# Added extras

When you become part of the Bruntwood SciTech network, your team can access exclusive events and discounts through the Bruntwood App.

Here's a snapshot of some of the national and regional partners we work with to deliver the best for you and your team:



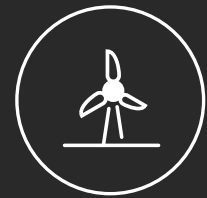
Available on:



A PERFECTLY LOCATED, WELL CONNECTED HUB

# A culture of sustainability

Recognising the urgency of the climate crisis, and driven to create change from within the commercial property sector, we're committed to developing a sustainable and fair future for our communities by reinventing with the planet in mind in four key areas:



**Investing in renewable energy** - all common areas, serviced offices and our own offices are using grid-supplied electricity generated from renewable sources



**Upgrading existing buildings** - for instance, by changing gas-fuelled boilers to air source heat pumps, which release less carbon emissions.



**Creating new, net zero buildings** - our new buildings are net zero in construction and operation (in common areas), and don't use fossil fuels to provide heating and hot water.



**Recommending sustainable interior design options** - from carpets to lighting, our team can suggest environmentally friendly design choices that match your budget.

View our Sustainability Brochure



Click or scan

It's impossible to summarise all of our sustainability actions, goals and success stories into a few short paragraphs, so we invite you to dive deeper into our work by taking a look at our additional resources: For more information, or if you have any questions, our dedicated team is ready to assist at [sustainability@bruntwood.co.uk](mailto:sustainability@bruntwood.co.uk)



To power more of our spaces with renewable energy, we've purchased an industry-first 42.4% stake in Kirk Hill wind farm, based in Ayrshire, Scotland.

Electricity created by the wind farm will be allocated to our offices, serviced spaces, and common areas\*, a significant milestone on our path to net zero.

\*Where we get our electricity from the National Grid.

# Thank you

Mohamed Ali

Associate Director - Commercial Account Management

[mohamed.ali@bruntwood.co.uk](mailto:mohamed.ali@bruntwood.co.uk)

07456 955 509

Karan Bodh

Commercial Manager

[karan.bodh@bruntwood.co.uk](mailto:karan.bodh@bruntwood.co.uk)

07442 893 108



Ben Thacker

[ben.thacker@savills.com](mailto:ben.thacker@savills.com)

07917 218 244

**CBRE**

Theo Holmes

[theo.holmes@CBRE.com](mailto:theo.holmes@CBRE.com)

07967 802 656

**bruntwood**  
SciTech