
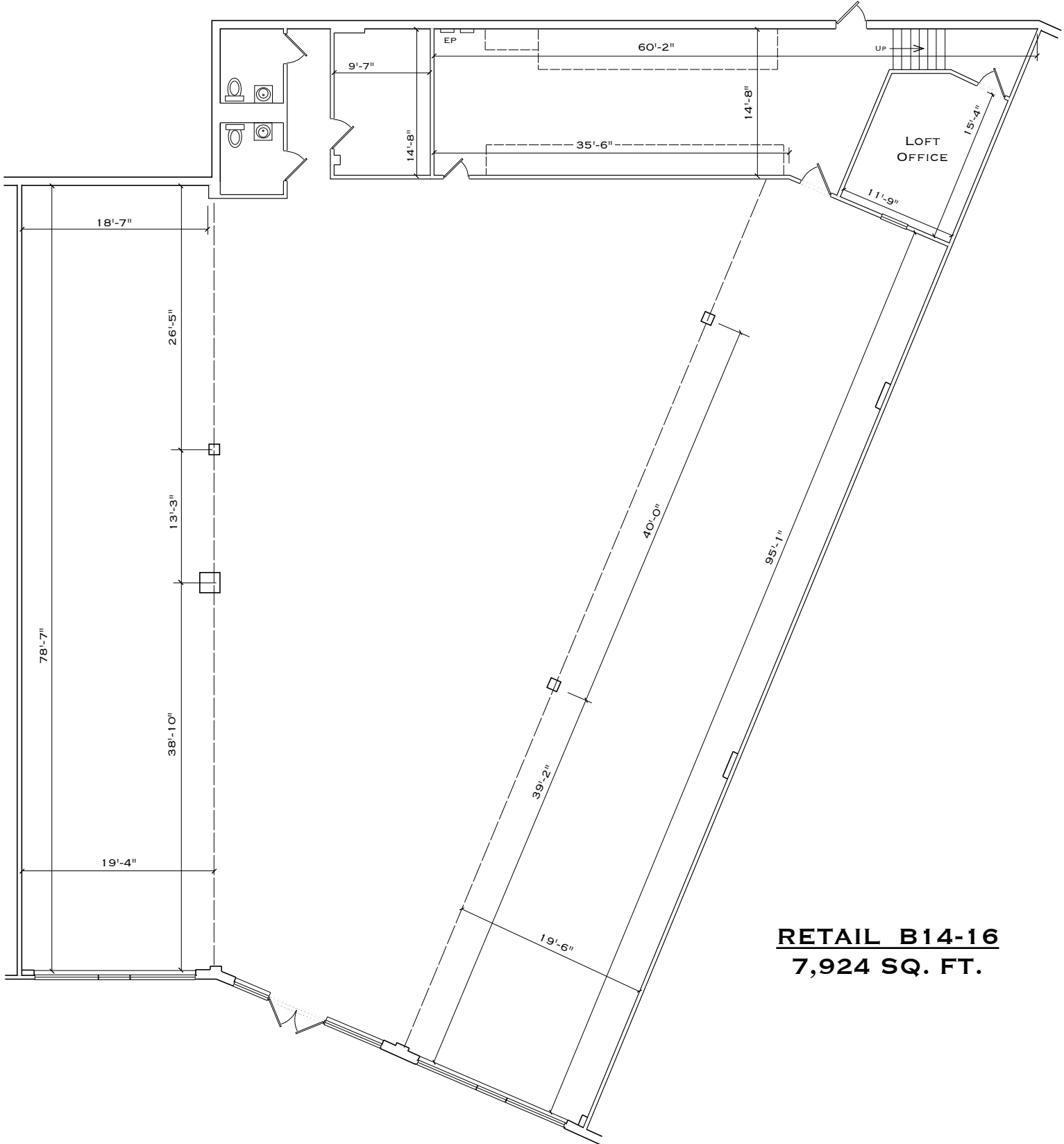


230 N. MAPLE AVE.
MARLTON, NJ
 CRISPIN SQUARE
 SHOPPING CENTER

APPROXIMATE
 SQUARE FEET
 SHOWN
7,924

RETAIL
B14-16

DETAILED FLOOR PLANS •  ROOMINDERS • REAL ESTATE MARKETING
 p 856.429.4233 | web - www.roominders.com | f 856.429.8118
 e jon@roominders.com | measured by Jon Hitchner 3.18.19 | Revised -
 * Actual measurements may vary | * Not to be used for construction purposes
 * Position of walls and fixtures are approximate | * Only to be used with written permission



RETAIL B14-16
7,924 SQ. FT.