



15855 - 15859 Edna Place

Irwindale, California 91706

Property Highlights

- Rare small suites.
- Short term Leases available.
- Remodeled office building.
- Free parking.
- Great for wholesale or retail auto dealers.

Property Description

Close to many Freeways.

OFFERING SUMMARY

Lease Rate:	Negotiable
Available SF:	169 - 269 SF
Building Size:	8,439 SF

SPACES	LEASE RATE	SPACE SIZE
5	Negotiable	267 SF
20	Negotiable	251 SF
203 A	Negotiable	169 SF
203 B	Negotiable	269 SF

Tina LaMonica, SIOR

Executive Vice President | 626.204.1523

tlamonica@naicapital.com | CalDRE #01841057





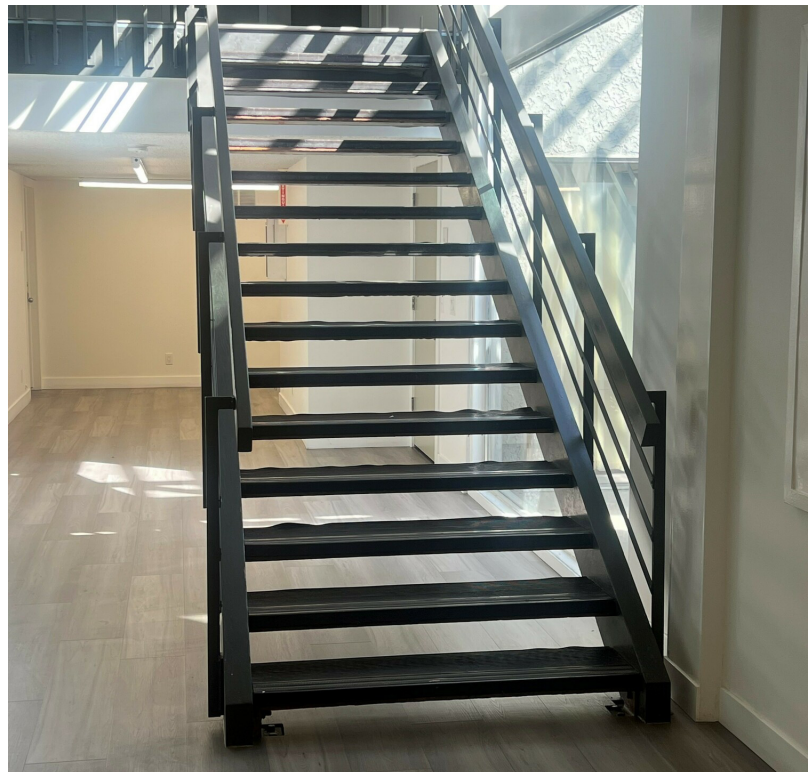
FOR LEASE



OFFICE BUILDING



169 - 269 SF



Tina LaMonica, SIOR
Executive Vice President | 626.204.1523
tlamonica@naicapital.com | CalDRE #01841057



www.naicapital.com

©NAI CAPITAL COMMERCIAL, INC. CONTENT IN THIS DOCUMENT MAY INCLUDE AI GENERATED OR ALTERED TEXT, IMAGES AND/OR ANALYSIS. NO WARRANTY, EXPRESS OR IMPLIED, IS MADE AS TO THE ACCURACY OF THE INFORMATION CONTAINED HEREIN. THIS INFORMATION IS SUBMITTED SUBJECT TO ERRORS, OMISSIONS, CHANGE OF PRICE, RENTAL OR OTHER CONDITIONS, WITHDRAWAL WITHOUT NOTICE, AND IS SUBJECT TO ANY SPECIAL LISTING CONDITIONS IMPOSED BY OUR PRINCIPALS, COOPERATING BROKERS, BUYERS, TENANTS AND OTHER PARTIES WHO RECEIVE THIS DOCUMENT SHOULD NOT RELY ON IT, BUT SHOULD USE IT AS A STARTING POINT OF ANALYSIS, AND SHOULD INDEPENDENTLY CONFIRM THE ACCURACY OF THE INFORMATION CONTAINED HEREIN THROUGH A DUE DILIGENCE REVIEW OF THE BOOKS, RECORDS, FILES AND DOCUMENTS THAT CONSTITUTE RELIABLE SOURCES OF THE INFORMATION DESCRIBED HEREIN. UNEDITED IMAGES VIEWABLE AT NAICAPITAL.COM | CAL DRE LIC #02130474