

Wells Fargo Center

355 South Grand Avenue, Suite 2450, Los Angeles, CA 90071



PRIVATE OFFICES

Highly professional private offices for individuals and teams that are flexible and scaled for growth.

MEETING ROOMS

Spacious, well-appointed meeting rooms with on-site administrative support. Available for an hour, day or longer.

VIRTUAL OFFICES

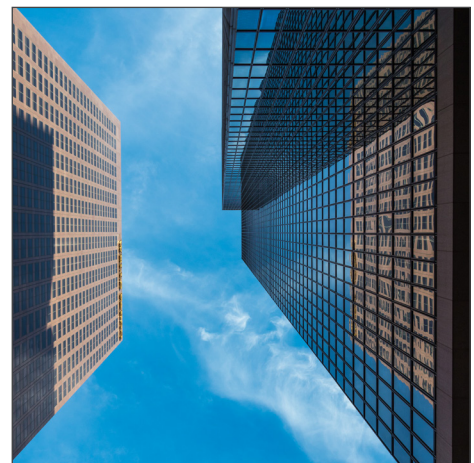
Establish a business presence with mail handling, phone answering or meeting room time.

ABOUT THIS LOCATION

Discover the best of Downtown Los Angeles in this recently renovated workspace with modern interiors, breathtaking views, and well-appointed amenities. 355 South Grand Avenue is located in the prestigious Wells Fargo, known for its Class-A high-rises and proximity to a variety of restaurants, shops, theaters, and other points of interest. Simply walk to nearby amenities or enjoy proximity to Metro (bus and rail) as well as the 101, 110, 5, and 10 Freeways.

CONTACT US

Let's touch base! Contact the on-site General Manager at 213-943-1300 or 355manager@premierworkspaces.com to schedule a tour.



Wells Fargo Center

355 South Grand Avenue, Suite 2450, Los Angeles, CA 90071



PREMIER AMENITIES

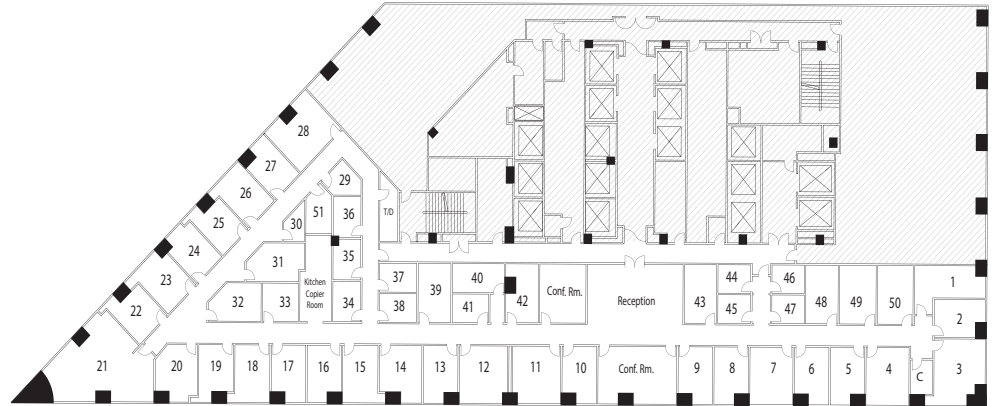
Our private suites can be easily customized to fit your desired aesthetic and brand.

- Private Offices
- Team Rooms
- High Speed Internet
- Telephone Answering
- Mail Collection
- Equipped Kitchen
- Day Offices
- Meeting Rooms
- Daily Janitorial
- Furnished or Unfurnished

PREMIER DIFFERENCE

We've been perfecting the professional workspace for over 17 years.

- Highly-Professional Atmosphere
- On-Site Manager & Support Staff
- Scalable Solutions for Individuals and Teams
- On-Site Billing
- 90+ Locations Nationwide



NEARBY AMENITIES

Downtown Los Angeles, California is well-known for its historic architecture, walkable amenities and central location to critical transportation routes.

Nearby Amenities:

- Angele's Flight
- Broadway Theater District
- Disney Concert Hall
- Grand Central Market
- LA Live – Staples Center, Grammy Museum, Convention Center
- Little Tokyo
- Los Angeles Central Library
- Los Angeles Civic Center
- Pershing Square
- Macy's Plaza (Recently Renovated)
- Museum of Contemporary Art (MOCA)
- The Broad
- Union Station
- University of Southern California

Nearby Transit:

- Freeways – 101, 110, 10, and 5 Freeways
- Rail – Metrolink/Amtrak (Union Station)
- Bus – LA Metro
- Other – Lime and Bird

CONTACT US

Let's touch base! Contact the on-site General Manager at 213-943-1300 or 355manager@premierworkspaces.com to schedule a tour.