

# FOR LEASE ±74,243 SF



**22324-B TEMESCAL CANYON RD | CORONA, CA 92883**



COMMERCIAL REAL ESTATE SERVICES

4193 Flat Rock Drive, Suite 100  
Riverside, CA 92505  
Corporate DRE# 01048055

**LAWRENCE C. NULL, SIOR** | 951.276.3616 | [lnull@leeriverside.com](mailto:lnull@leeriverside.com) | DRE# 00822133

**JUSTIN NULL, SIOR** | 951.276.3634 | [jnull@leeriverside.com](mailto:jnull@leeriverside.com) | DRE# 01899025

# FLOOR PLAN & BUILDING FEATURES

## BUILDING FEATURES

- Located in Wildrose Business Park
- Rear Portion of Larger 232,915 SF Building
- One (1) Extra Wide Ground Level Door (24' x 14')
- Four (4) Dock High Doors
- ESFR Fire Sprinkler System
- 2 Restrooms
- 30' Clear Height in Warehouse
- Gated, Concrete Truck Court
- MSC Zoning

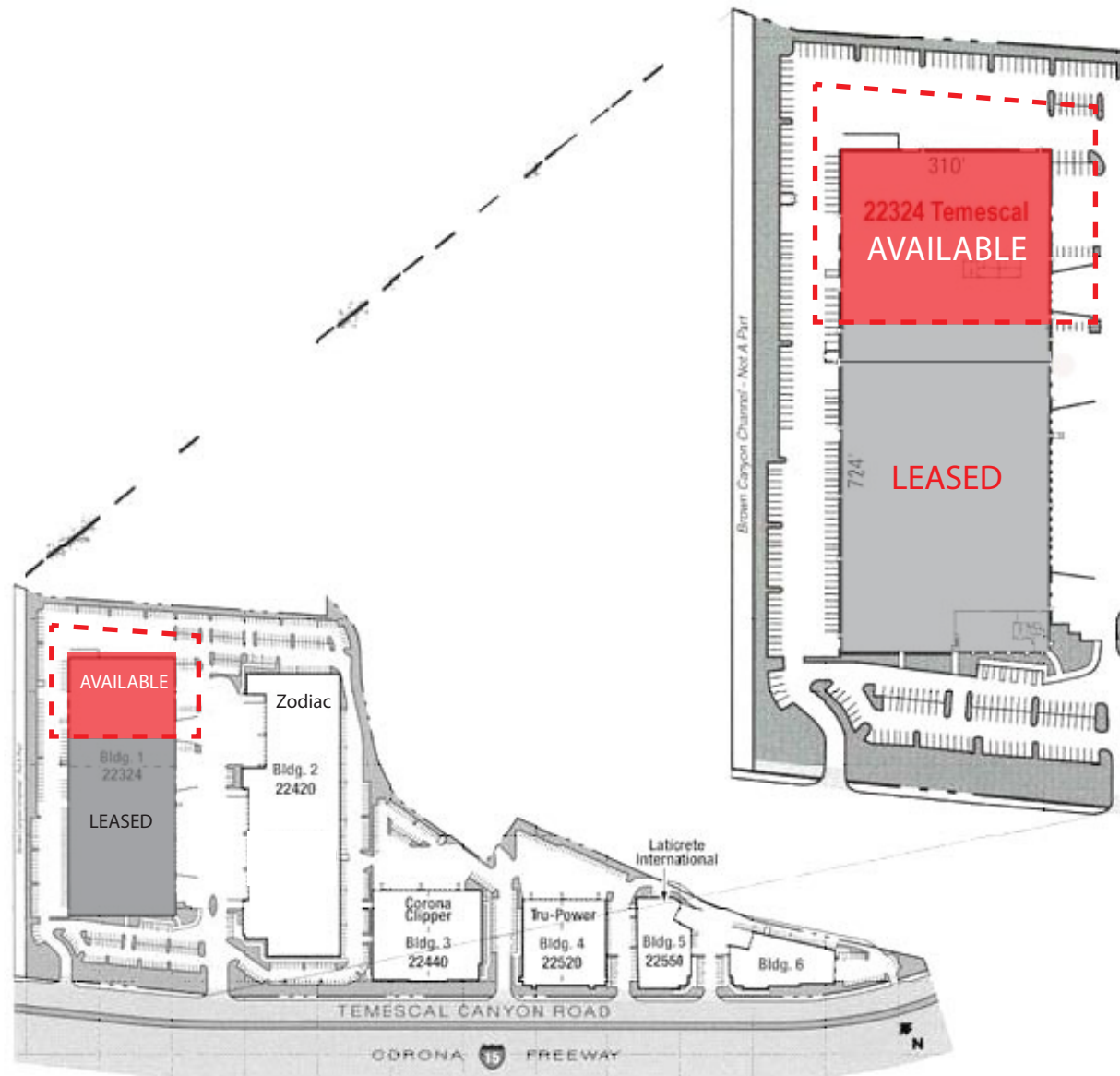


Broker Contacts: Lawrence C. Null, SIOR, DRE #00822133 | Justin Null, SIOR, DRE #01899025

LEE & ASSOCIATES, INC. - RIVERSIDE | 4193 FLAT ROCK DRIVE, SUITE 100 | RIVERSIDE, CA 92505

No warranty or representation has been made as to the accuracy of the foregoing information. Terms of sale or lease and availability are subject to change or withdrawal without notice. Corporate DRE #01048055

# SITE PLAN



YARD AND PARKING INSIDE OF RED DOTTED BOX. OWNER USING PERIMETER PARKING.

Broker Contacts: Lawrence C. Null, SIOR, DRE #00822133 | Justin Null, SIOR, DRE #01899025

LEE & ASSOCIATES, INC. - RIVERSIDE | 4193 FLAT ROCK DRIVE, SUITE 100 | RIVERSIDE, CA 92505

No warranty or representation has been made as to the accuracy of the foregoing information. Terms of sale or lease and availability are subject to change or withdrawal without notice. Corporate DRE #01048055

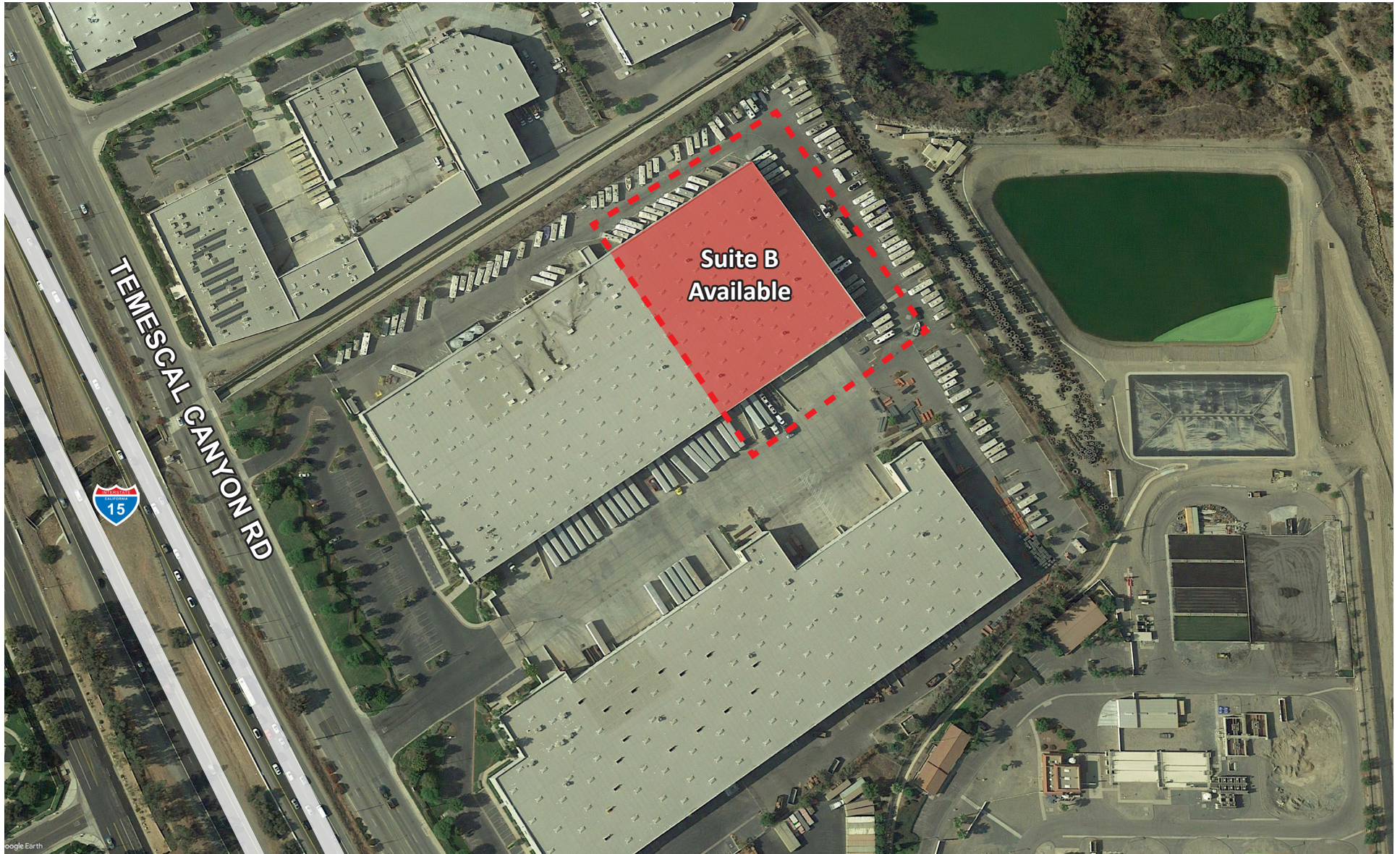
# PROPERTY PHOTOS



Broker Contacts: Lawrence C. Null, SIOR, DRE #00822133 | Justin Null, SIOR, DRE #01899025

LEE & ASSOCIATES, INC. - RIVERSIDE | 4193 FLAT ROCK DRIVE, SUITE 100 | RIVERSIDE, CA 92505

No warranty or representation has been made as to the accuracy of the foregoing information. Terms of sale or lease and availability are subject to change or withdrawal without notice. Corporate DRE #01048055

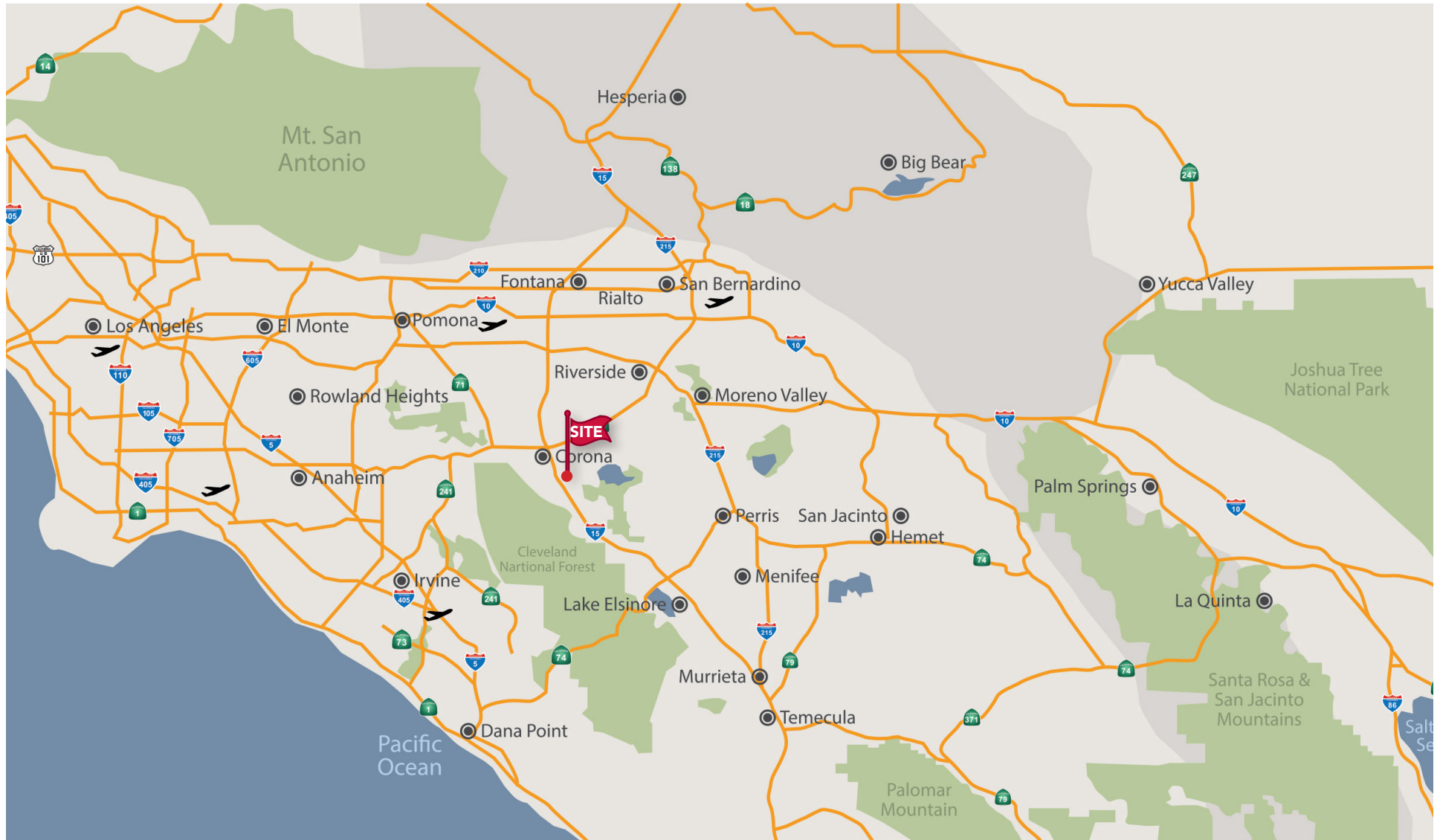


Broker Contacts: Lawrence C. Null, SIOR, DRE #00822133 | Justin Null, SIOR, DRE #01899025

LEE & ASSOCIATES, INC. - RIVERSIDE | 4193 FLAT ROCK DRIVE, SUITE 100 | RIVERSIDE, CA 92505

No warranty or representation has been made as to the accuracy of the foregoing information. Terms of sale or lease and availability are subject to change or withdrawal without notice. Corporate DRE #01048055

# LOCATION MAP



Broker Contacts: Lawrence C. Null, SIOR, DRE #00822133 | Justin Null, SIOR, DRE #01899025

LEE & ASSOCIATES, INC. - RIVERSIDE | 4193 FLAT ROCK DRIVE, SUITE 100 | RIVERSIDE, CA 92505

No warranty or representation has been made as to the accuracy of the foregoing information. Terms of sale or lease and availability are subject to change or withdrawal without notice. Corporate DRE #01048055