

FOR LEASE **Santa Rosa**

# Stony Point Campus



Where Great Design Meets a Walkable, Waterfront Feel.



# FOR LEASE **Santa Rosa** **Stony Point Campus**



**ThriveatStonyPoint.com**

## Class A Office in Santa Rosa's Premier Office Park

Type:  
**Office/Retail Flex**

Address:  
**70 Stony Point Rd  
Santa Rosa, CA**

Total Campus SF  
**19,382**

### **DESCRIPTION**

The Stony Point Campus is a collection of four Class A office buildings located on a beautiful three-acre man-made lake with glass block fountains, walking paths and dramatic water displays. The buildings offer extensive glass lines and oak trim finishes. These four buildings were built between 1990-2001 and considered the "premier" office park within Santa Rosa. The project is known for its unique campus-like environment, institutional-quality construction, and central location near both employee and executive residences. The property also benefits from its immediate proximity to Highways 101 and 12, public transportation and onsite amenities.

New 790.4 kW rooftop solar panel installation reducing annual carbon footprint by 879 tons and generating 1,127,270 kWh/year of power.

### **LOCATION**

The portfolio's location provides close proximity to the region's executive housing and over 3.4 million square feet of regional retail amenities within a two mile radius. Nearby retail amenities include Coddington Mall, the region's shopping mall and Santa Rosa's primary retail destination. Coddington Mall has over 45 stores and features Whole Foods, Target, Macy's and Nordstrom Rack.

### **AMENITIES**

- Corner location and Stony Point Road frontage maximizes signage and exposure.
- Campus setting with water features, seating areas, fountains, walking paths & public art.
- High quality finished with floor to ceiling windows. Excellent views of water fountain and well manicured grounds.
- Direct proximity to on-site parking.

### **KEY TENANTS**

JL Construction  
US Bank  
Walter Tom, MD, FACS



EXCLUSIVELY MARKETING BY:  
**Shawn Johnson**  
**Keegan & Coppin Co., Inc.**  
DRE#: 00835502  
(707) 528-1400

**Peter Briceño**  
**Keegan & Coppin Co., Inc**  
DRE#: 01885655  
(707) 528-1400

FOR LEASE **Santa Rosa**  
**Stony Point Campus**

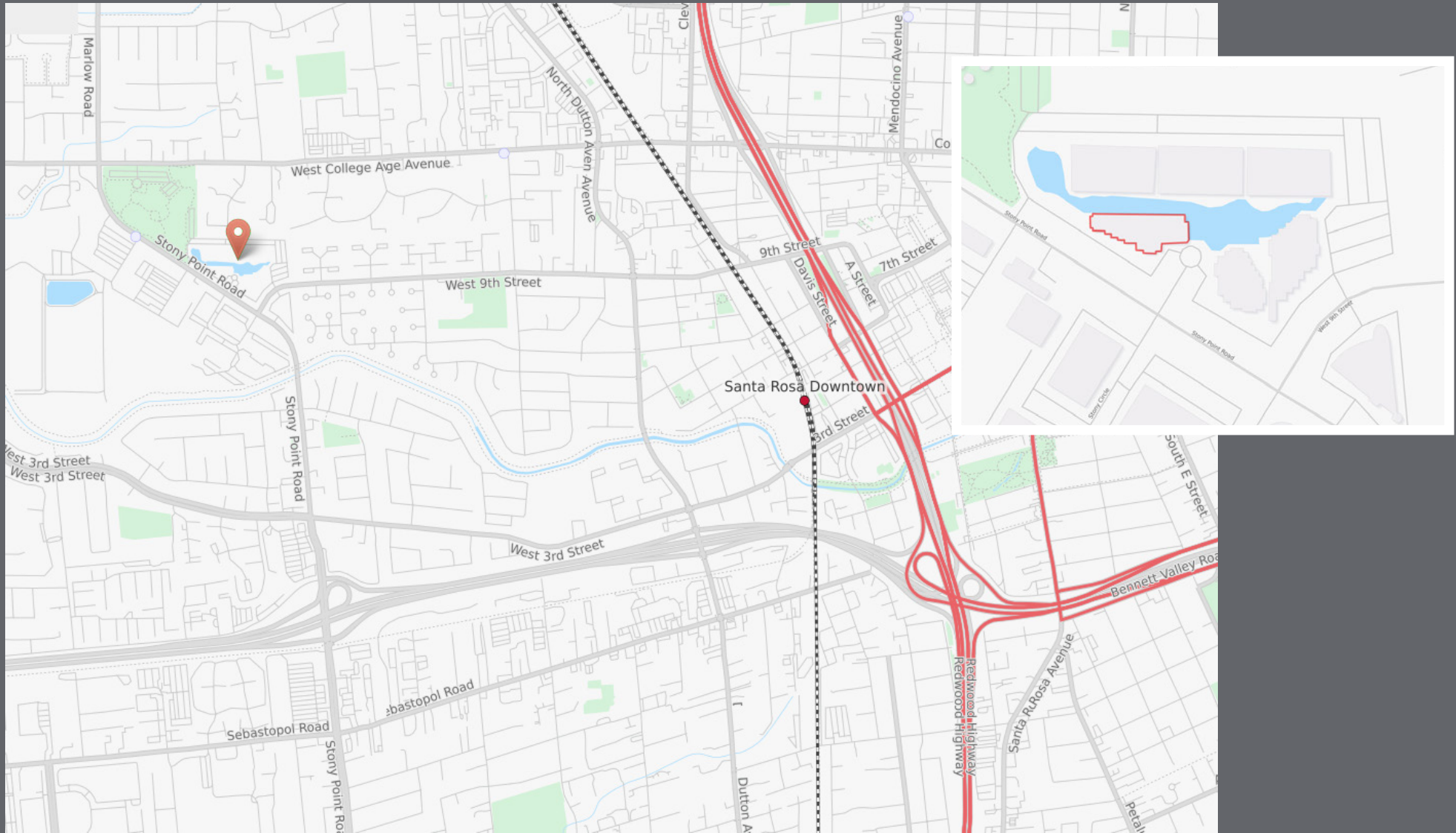


EXCLUSIVELY MARKETED BY:  
**Shawn Johnson**  
**Keegan & Coppin Co., Inc.**  
DRE#: 00835502  
(707) 528-1400

**Peter Briceño**  
**Keegan & Coppin Co., Inc**  
DRE#: 01885655  
(707) 528-1400

FOR LEASE **Santa Rosa**  
**Stony Point Campus**

Located in Santa Rosa's premier Stony Point office park, with immediate proximity to Highways 101 and 12, public transportation, and amenities.



EXCLUSIVELY MARKETED BY:  
**Shawn Johnson**  
**Keegan & Coppin Co., Inc.**  
DRE#: 00835502  
(707) 528-1400

**Peter Briceño**  
**Keegan & Coppin Co., Inc**  
DRE#: 01885655  
(707) 528-1400

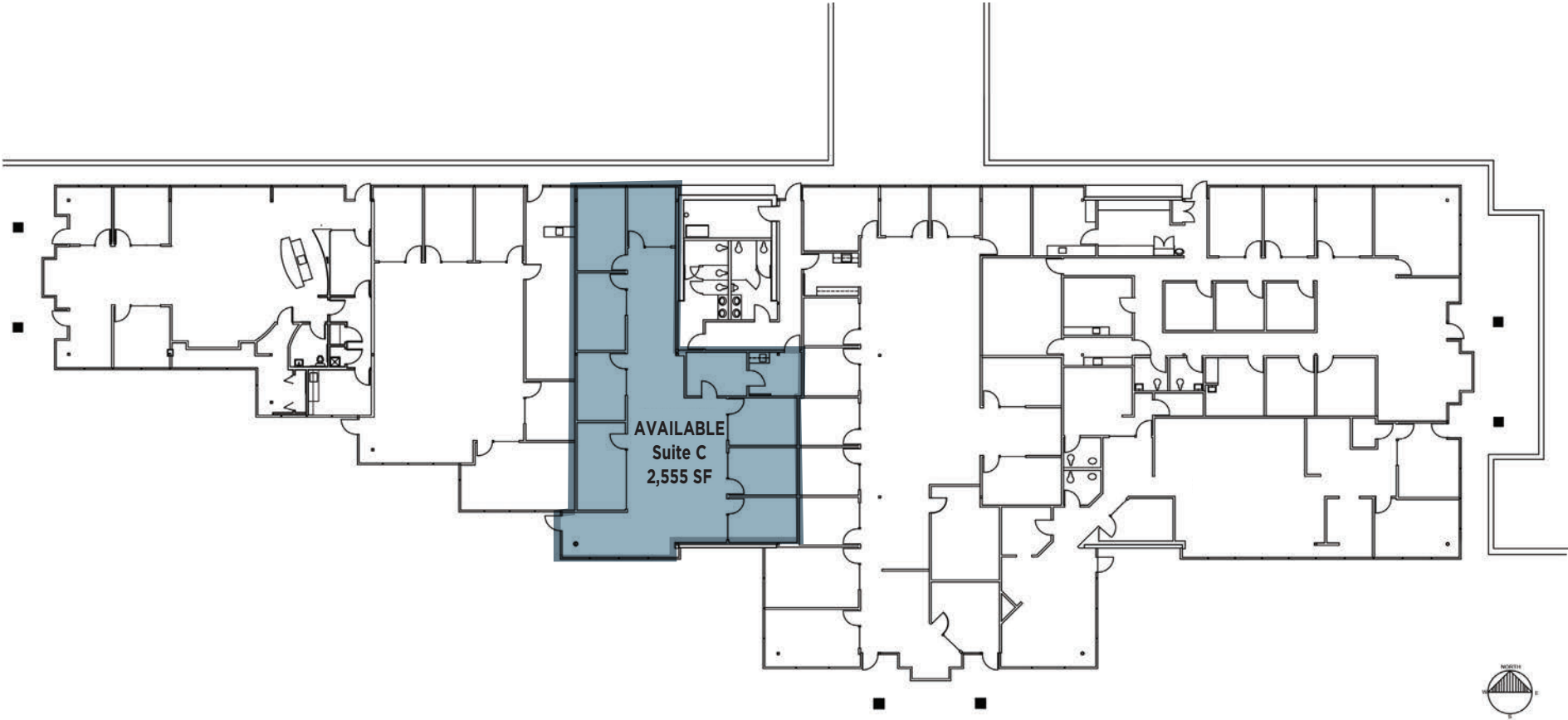
FOR LEASE **Santa Rosa**  
**Stony Point Campus**



**2,555 RSF**

70 Stony Point Road  
First Floor

- Suite C: 2,555 RSF



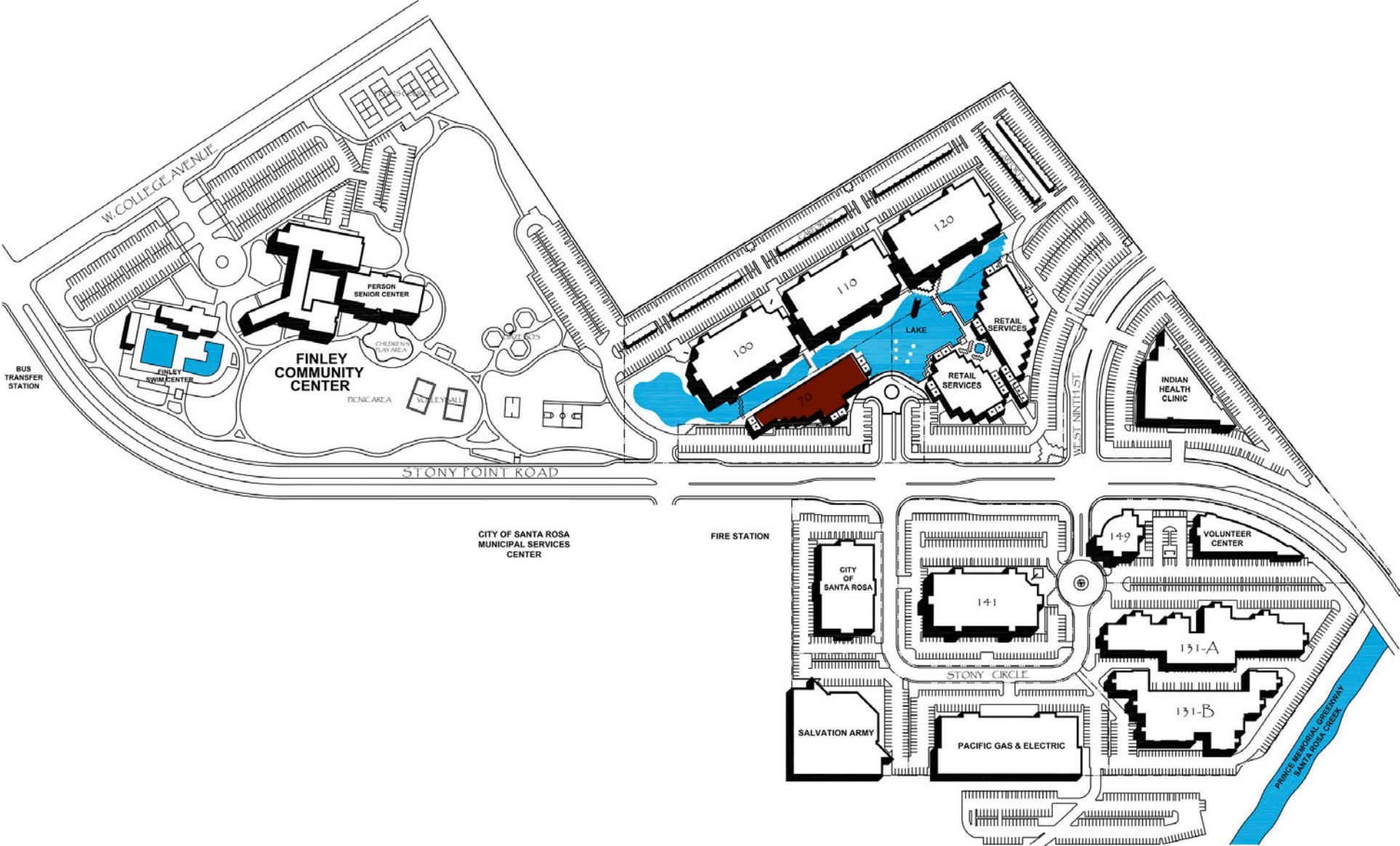
EXCLUSIVELY MARKETING BY:  
**Shawn Johnson**  
**Keegan & Coppin Co., Inc.**  
DRE#: 00835502  
(707) 528-1400

**Peter Briceño**  
**Keegan & Coppin Co., Inc**  
DRE#: 01885655  
(707) 528-1400

# FOR LEASE Santa Rosa Stony Point Campus



ThriveatStonyPoint.com



EXCLUSIVELY MARKETED BY:  
**Shawn Johnson**  
**Keegan & Coppin Co., Inc.**  
 DRE#: 00835502  
 (707) 528-1400

**Peter Briceño**  
**Keegan & Coppin Co., Inc**  
 DRE#: 01885655  
 (707) 528-1400