

# FOR LEASE | 11-17 43RD AVENUE LONG ISLAND CITY, NY

 VIDEO TOUR

10,500 SF FREESTANDING OFFICE & FLEX BUILDING WITH PARKING



For Lease   
Office/Flex Building

11-17



# PROPERTY HIGHLIGHTS

Colliers

TOTAL BUILDING SIZE:	+/- 10,500 SF (three levels)
PARKING LOT:	+/- 7,000 SF
LOT DIMENSIONS:	+/- 103' X 140'
GROUND FLOOR:	+/- 2,750 SF
SECOND FLOOR:	+/- 2,750 SF
LOWER LEVEL:	+/- 5,000 SF (warehouse/storage conversion possible)
LOADING:	1 Drive-in with ramp to street level
ZONING:	M1-4 (office/flex/commercial)
RE TAXES:	\$73,922.04

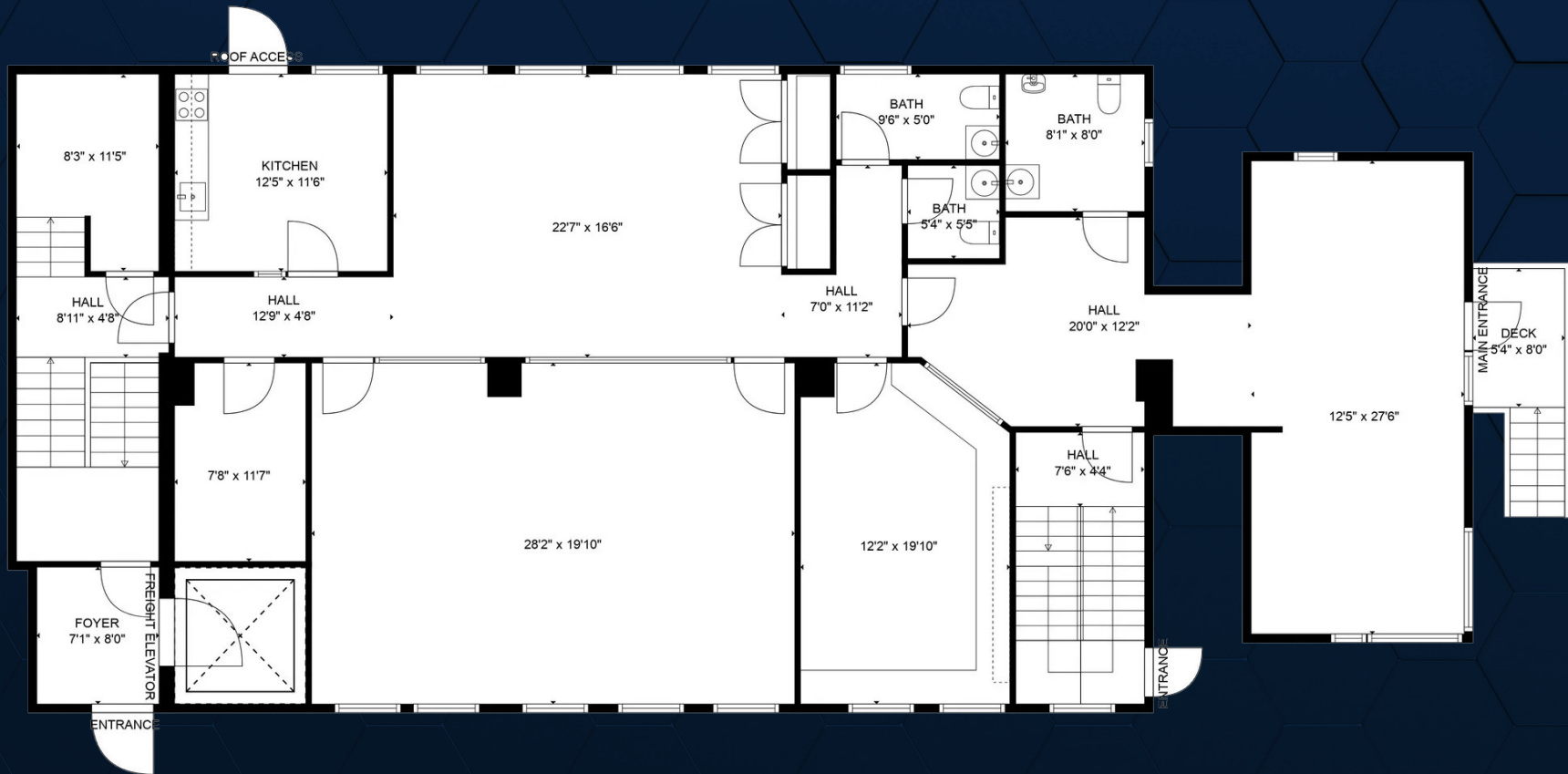
## HIGHLIGHTS

- Single tenant property with excellent corporate image
- Various divisions considered
- \$2 million in recent capital improvements
- ZERO loss factor compared to nearby multi-tenant buildings with up to 30% loss factor
- Up to 5,000 SF can be converted to warehouse/storage space
- Turnkey office build-out with modern finishes, conference space, and advanced security
- Freight elevator services Ground Floor and Lower Level
- Fully air-conditioned and heated
- Rare, fenced 7,000 SF parking lot with automatic gate
- 5-minute walk to Court Square (E, M, G, 7) and Queensboro Plaza (N, W, 7) subway stations
- Nearby bus routes include Q32, Q60, Q101, and B32 connecting Queens, Manhattan, and Brooklyn
- Immediate access to the Queensboro Bridge, Midtown Tunnel, I-495, and major thoroughfares into Manhattan and Long Island
- Steps from Long Island City's dining, bars, and cultural scene, including MoMA PS1, Gantry Plaza State Park, and a growing mix of restaurants and cafes

**ASKING LEASE PRICE: CALL FOR DETAILS**



# FIRST FLOOR — 2,750 SQUARE FEET



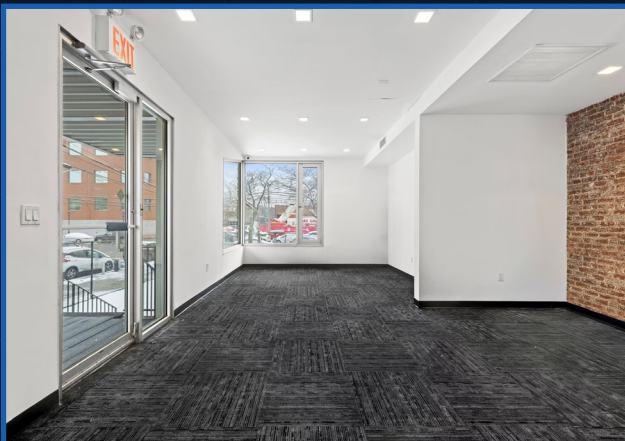
# SECOND FLOOR — 2,750 SQUARE FEET



# LOWER LEVEL — 5,000 SQUARE FEET

WAREHOUSE/STORAGE CONVERSION POSSIBLE





# 11-17 43RD AVENUE LONG ISLAND CITY



# 11-17

## 43RD AVENUE

LONG ISLAND CITY I NY

---

### **JOSHUA KLEINBERG**

Executive Vice President

203 961 6568

[joshua.kleinberg@colliers.com](mailto:joshua.kleinberg@colliers.com)

Licensed Salesperson

### **STEVEN SESSA**

Senior Associate

516 376 0741

[steven.sessa@colliers.com](mailto:steven.sessa@colliers.com)

Licensed Salesperson

### **JUSTIN MAIORANO**

Associate Vice President

516 284 3448

[justin.maiorano@colliers.com](mailto:justin.maiorano@colliers.com)

Licensed Salesperson

### **SAMUEL ESSERY**

Associate

401 864 0421

[samuel.essery@colliers.com](mailto:samuel.essery@colliers.com)

Not a Licensed Salesperson



No representation is made as to the accuracy of the information furnished herein and same is submitted subject to errors, omissions, change of prices, rental, or other conditions, prior sale, lease, sublease, and/or withdrawal without notice. While every attempt is made to ensure accuracy, the floor plan(s) is for guidance only. The measurements, dimensions, specifications, and other data shown are approximate and may not be to scale. We assume no responsibility for the accuracy of the floor plan(s) or for any action taken in reliance thereon. The floor plan(s) do not create any representation, warranty or contract. All parties should consult a professional, such as an architect, to verify the information contained herein. The furnishing of this information shall not be deemed a hiring. A commission in accordance with our principal's schedule of rates and conditions will be paid to the procuring Broker who executes our or our principal's brokerage agreement, subject to a fully consummated transaction upon terms and conditions acceptable to our principal. Colliers International CT.