



GEORGE A. HELD, AIA  
& ASSOCIATES

ARCHITECTS & PLANNERS

600 GETTY AVENUE  
SUITE 307  
CLIFTON, NEW JERSEY 07011

tel. 973-772-1553  
fax. 973-772-7928  
email gahassoc@gaharch.com  
web www.gaharch.com

George A. Held, AIA

nj lic.	C7212
ri lic.	2187
ma lic.	10416
n.c.a.r.b. cert.	30196
nj plan. lic.	2595

John DeThomas, AIA

nj lic.	10413
nj plan. lic.	4690

valid if sealed

project  
**13A MAIN STREET**  
SPARTA, NJ

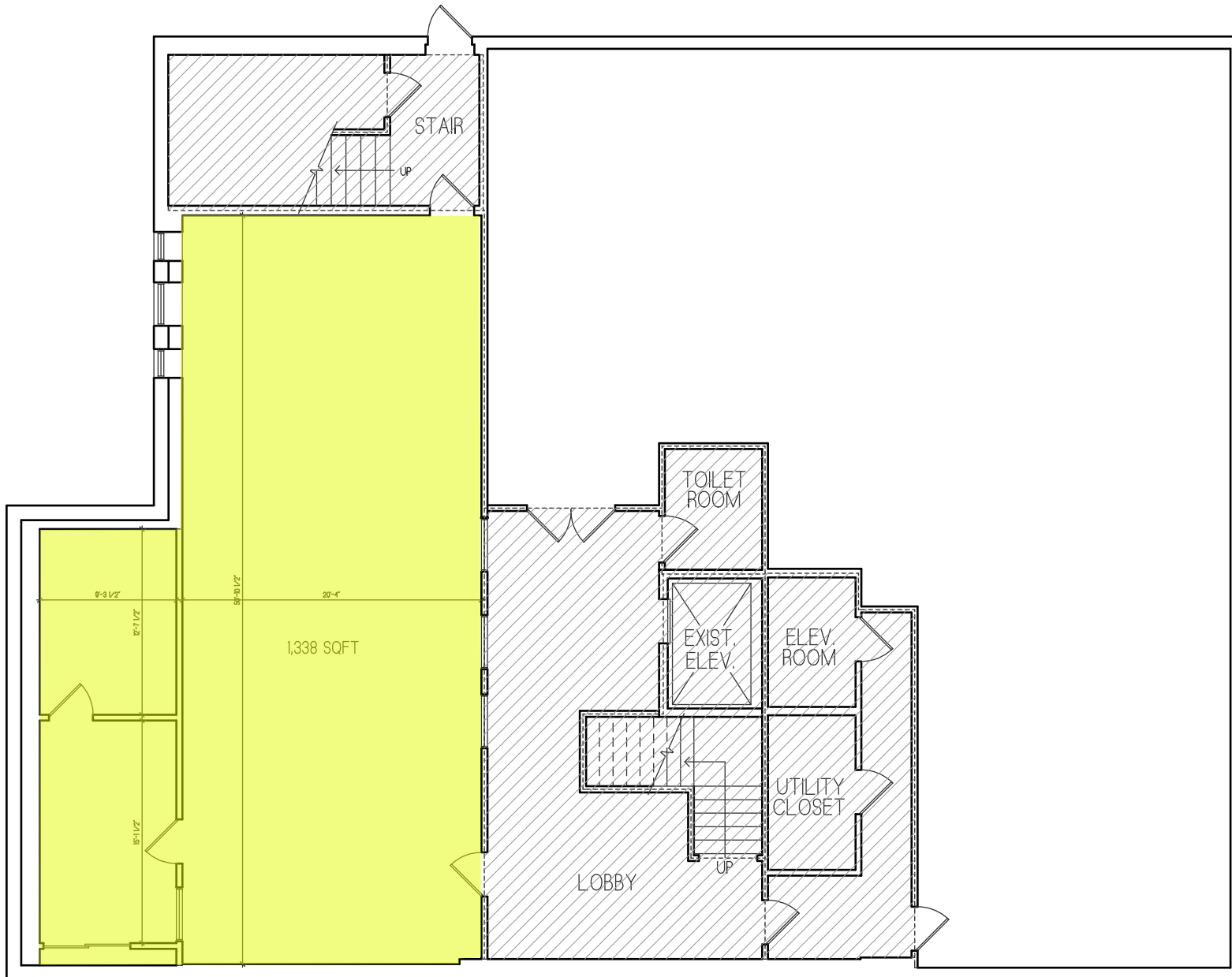
drawing title

date	drawn	checked
05/21/25	JB	GH
revisions		date

project	sheet
2141	1 of 3

COPYRIGHT © 2025 GEORGE A. HELD, AIA & ASSOCIATES  
REPRODUCTION OR RE-ISSUING WITHOUT WRITTEN PERMISSION  
FROM GEORGE A. HELD, AIA & ASSOCIATES IS PROHIBITED  
DUE TO THE INHERENT NATURE OF REPRODUCTIONS  
DO NOT SCALE THESE DRAWING

2382/GROUND FLOOR PLAN 05225AEC



TOTAL AREA = 5,068 SQFT  
COMMON FLOOR AREA = 1,101 SQ FT