

BLUEBOOK



Address.

167 Wardour Street, W1F

Size.

852 to 4,270 sq ft

Possession.

Available August 2025

Overview.

Fully fitted and Cat A offices in a prime Soho location - Coming Soon

Accommodation

Name	sq ft	sq m	Availability
4th - Fully Fitted	852	79.15	Coming Soon
3rd - Fully Fitted	1,550	144	Coming Soon
1st - Cat A	1,868	173.54	Coming Soon
Total	4,270	396.69	

Specification.

Fully fitted (3rd and 4th Floors), Fully refurbished, Lift, Air conditioning, Roof Terrace (4th Floor), Contemporary reception.

Financials.

Rent	£89.50 per sq ft
Rates Payable	£32.52 per sq ft
Service Charge	£16.50 per sq ft
EPC Rating	Upon enquiry

Contacts.

Isobel Ewart

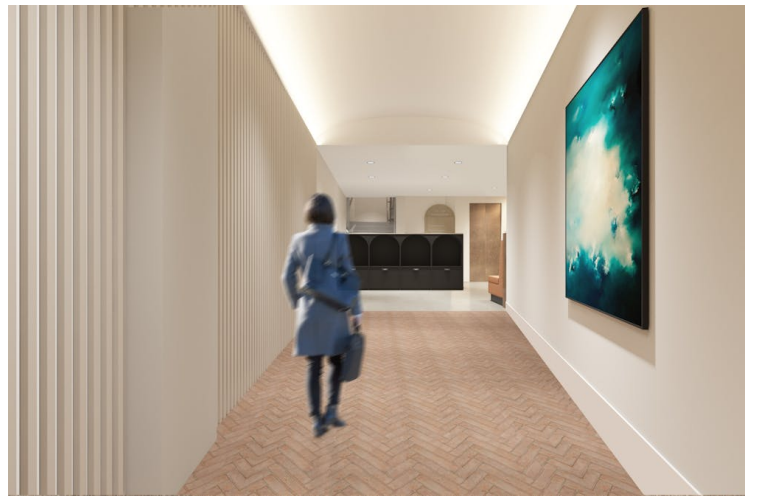
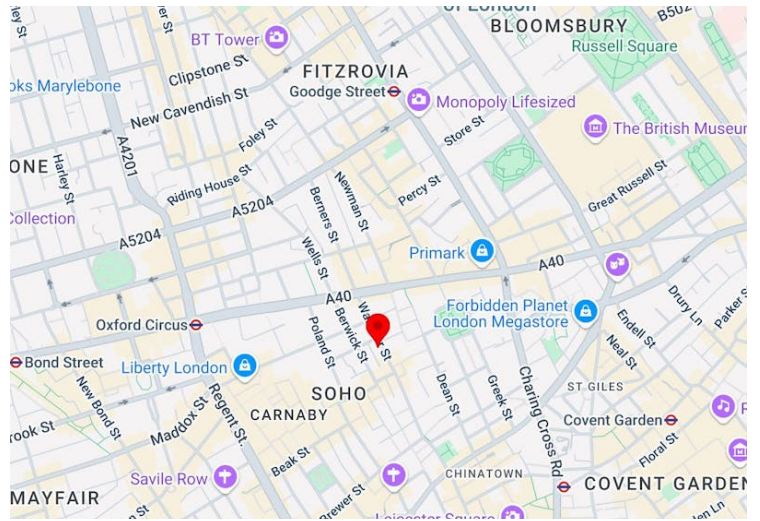
[020 7167 6403](tel:02071676403) | [07714 491025](tel:07714491025)

isobel@bluebooklondon.co.uk

Joe Fuller

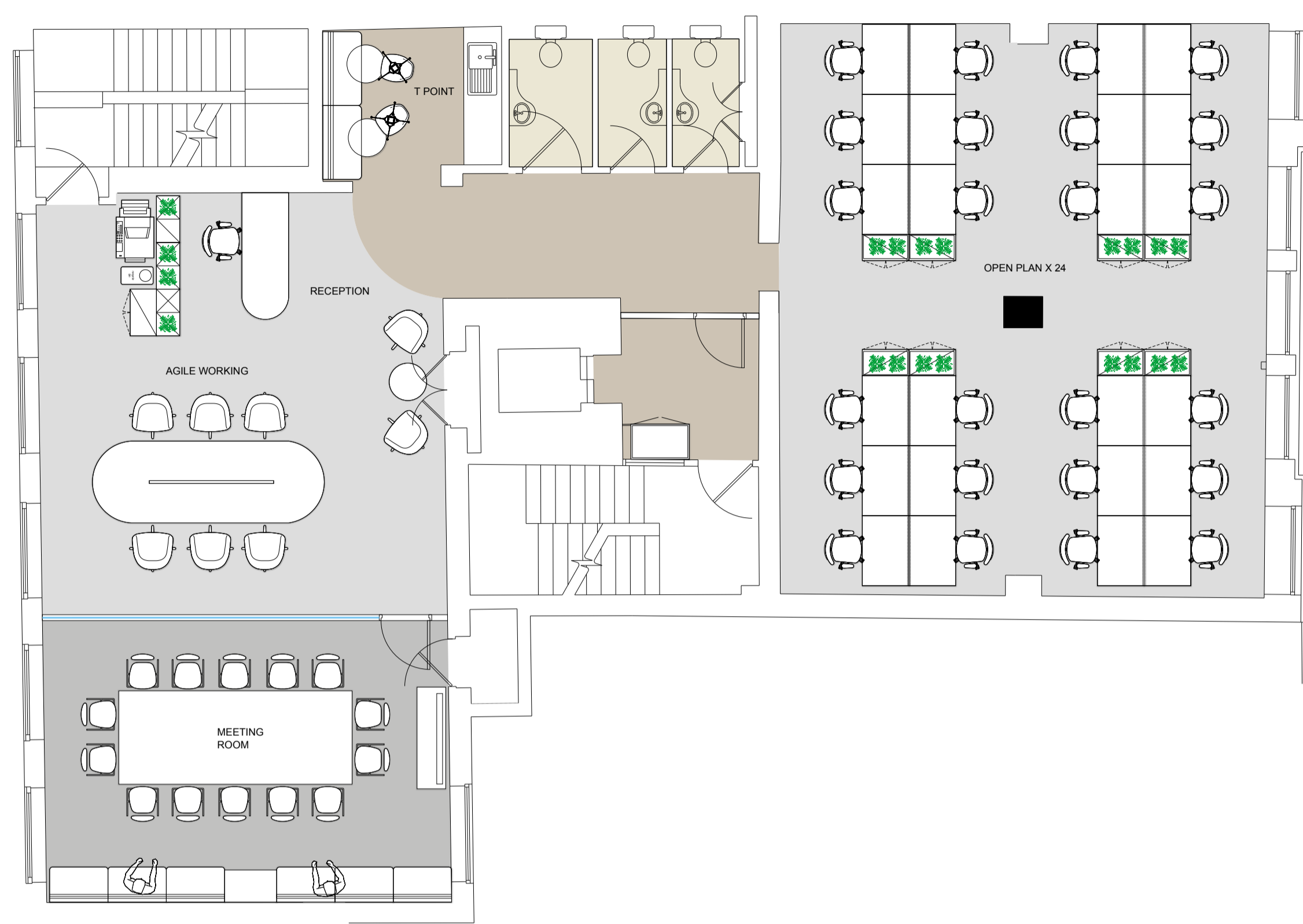
[020 7167 6401](tel:02071676401) | [07803937733](tel:07803937733)

joe@bluebooklondon.co.uk



These particulars do not constitute a contract. Prospective occupiers must not rely upon the details herein as statements of facts or representations and must satisfy themselves as to their accuracy. Generated on 31/07/2025

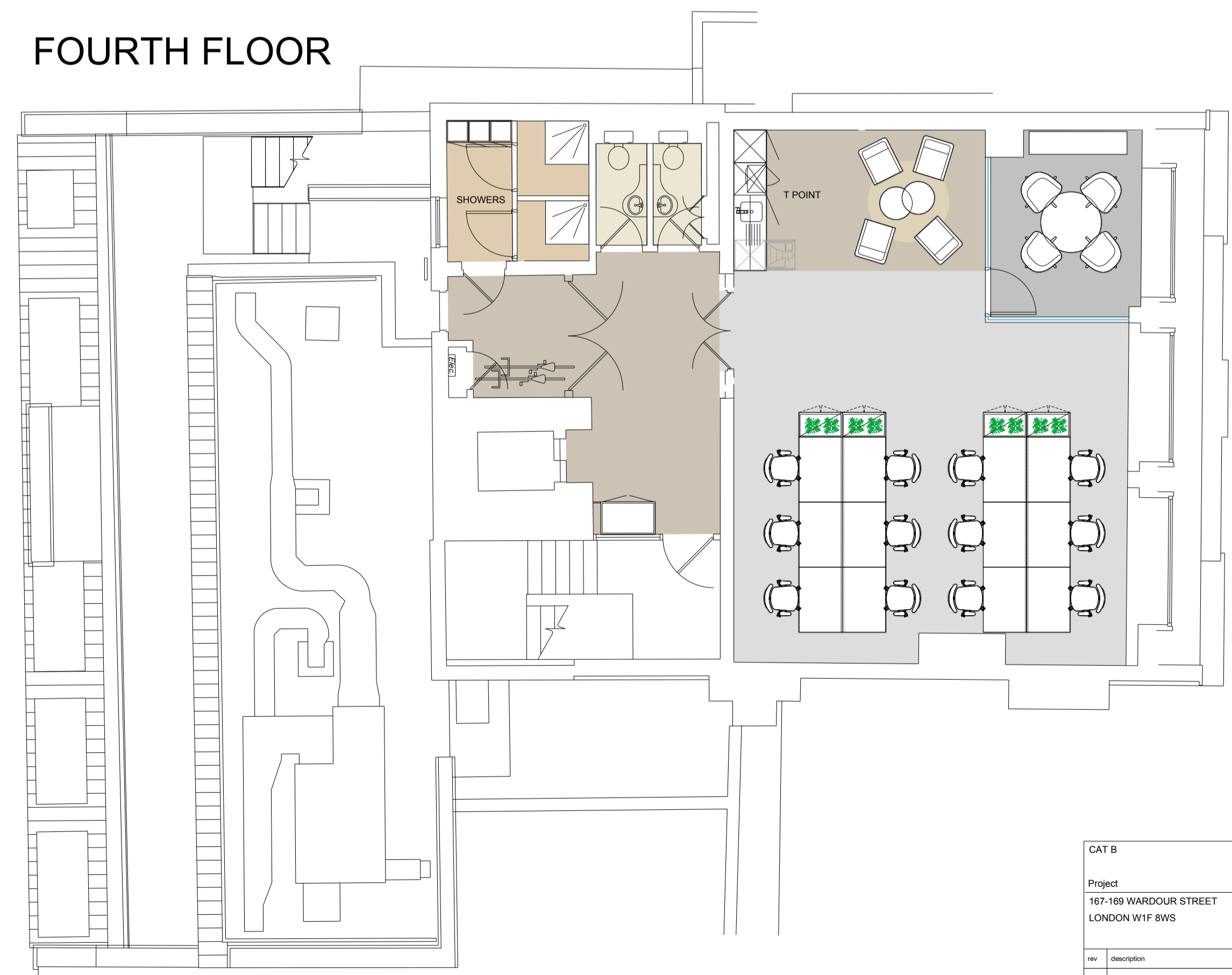
FIRST FLOOR



THIRD FLOOR



FOURTH FLOOR



CAT B				PROPOSED GENERAL ARRANGEMENT			
Project				FLOOR			
167-169 WARDOUR STREET LONDON W1F 8WS				TEST FIT OPTION ALL FLOORS			
Designer: LOU				Scale: 1:75@A1			
DWG No: 2500_ALL_PGA				Rev: H			
The Small Print:							
1. This drawing may not be copied, shown or given in a third party without express							
2. Approval from Morre Interiors Ltd							
3. Where necessary to control access responsibility to the accuracy of content							
4. Content is intended for use by the party to whom it is issued. It is not to be							
5. Used for any other purpose without the written consent of the party to whom it is issued							
6. Copyright © 2025 Morre Interiors Ltd							
Tel: 0203 761 726							
Email: info@morreinteriors.com							
Web: www.morreinteriors.com							
© Copyright Morre Interiors Ltd 2025							