

# FOR SUBLEASE ±4,921 SF INDUSTRIAL BUILDING

**41680** CORPORATE  
CENTER CT.  
MURRIETA, CA

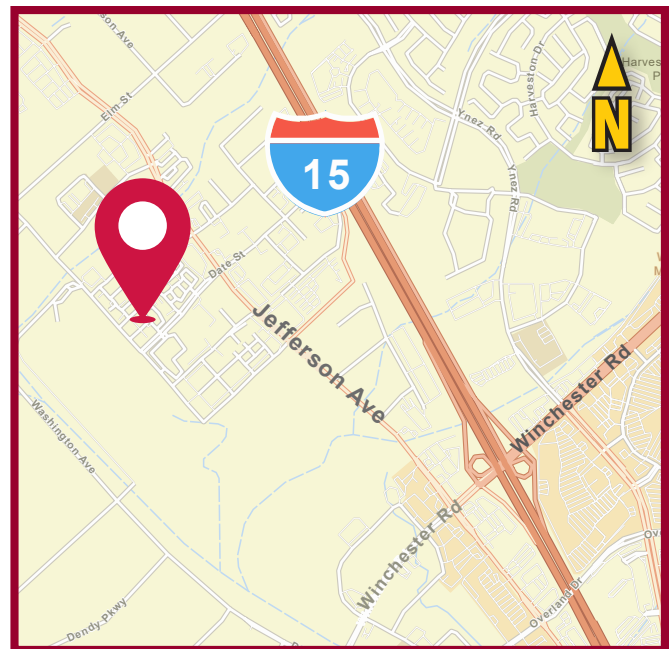


## FEATURES:

- 16' CLEAR HEIGHT
- 1 GL ROLL UP DOOR (10'X12')
- ±800 SF OF OFFICE SPACE
- RECEPTION AREA, 3 PRIVATE OFFICES, KITCHENETTE, AND 2 RESTROOMS.
- POWER: 400 AMP, 120/208V, 3 PHASE, 4 WIRE
- ZONING: BUSINESS PARK (BP) - CITY OF MURRIETA
- SUBLEASE EXPIRATION DATE: 2/28/2027

## SUBLEASE RATE:

Contact Agent



## GORDON MIZE

951.445.4504  
gmize@leetemecula.com  
DRE#: 01275376

## CONNOR STRODE

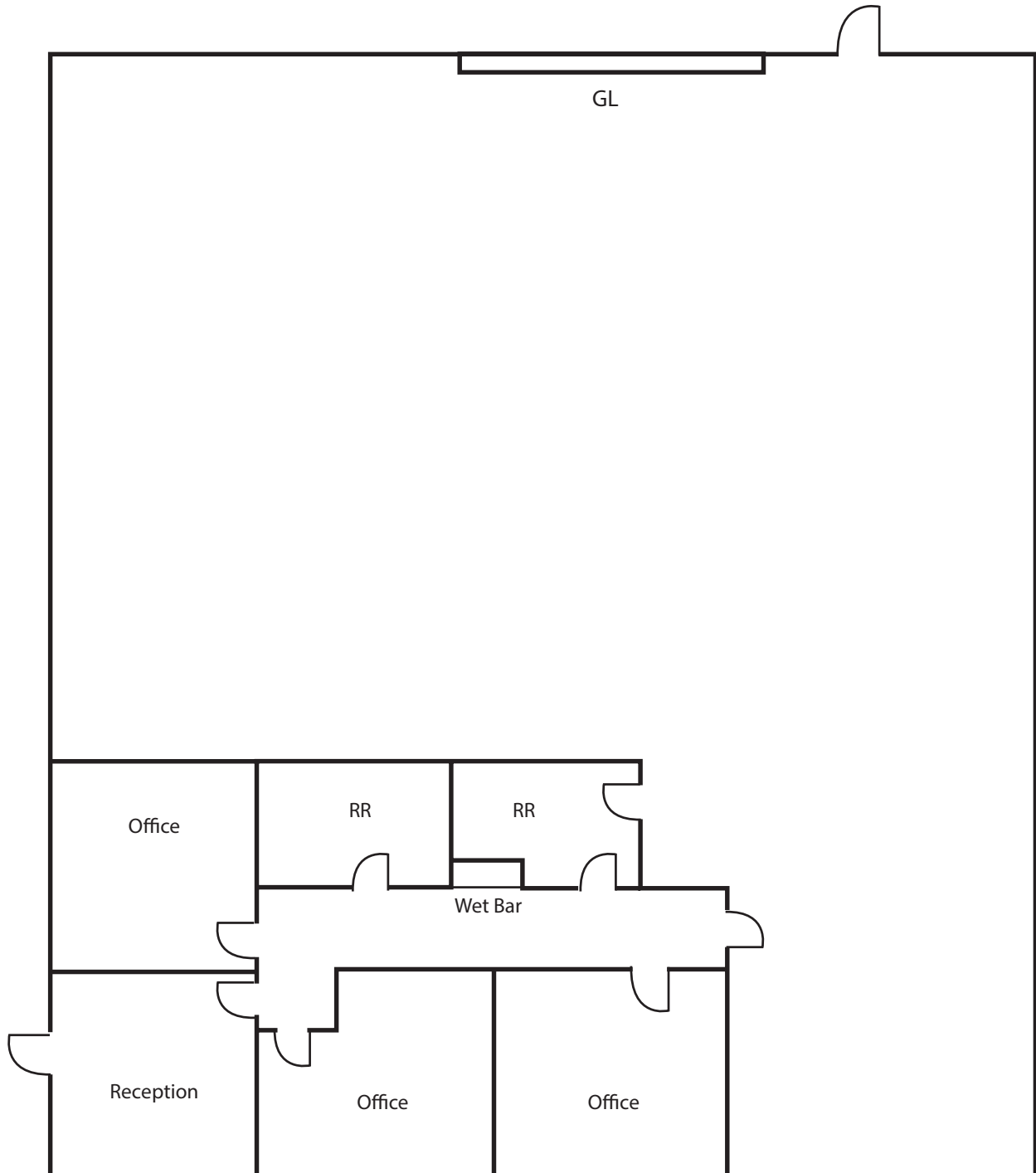
951.445.4529  
cstrode@leetemecula.com  
DRE#: 02170137

## BEN WELLER

951.445.4561  
bweller@leetemecula.com  
DRE#: 02254521

**FOR SUBLEASE**  
**±4,921 SF INDUSTRIAL BUILDING**

**41680** CORPORATE  
CENTER CT.  
MURRIETA, CA



**GORDON MIZE**

951.445.4504  
gmize@leetemecula.com  
DRE#: 01275376

**CONNOR STRODE**

951.445.4529  
cstrode@leetemecula.com  
DRE#: 02170137

**BEN WELLER**

951.445.4561  
bweller@leetemecula.com  
DRE#: 02254521

**FOR SUBLEASE**  
**±4,921 SF INDUSTRIAL BUILDING**

**41680** CORPORATE  
CENTER CT.  
MURRIETA, CA



**GORDON MIZE**

951.445.4504  
gmize@leetemecula.com  
DRE#: 01275376

**CONNOR STRODE**

951.445.4529  
cstrode@leetemecula.com  
DRE#: 02170137

**BEN WELLER**

951.445.4561  
bweller@leetemecula.com  
DRE#: 02254521

**FOR SUBLEASE**  
**±4,921 SF INDUSTRIAL BUILDING**

**41680** CORPORATE  
CENTER CT.  
MURRIETA, CA



**GORDON MIZE**

951.445.4504  
gmize@leetemecula.com  
DRE#: 01275376

**CONNOR STRODE**

951.445.4529  
cstrode@leetemecula.com  
DRE#: 02170137

**BEN WELLER**

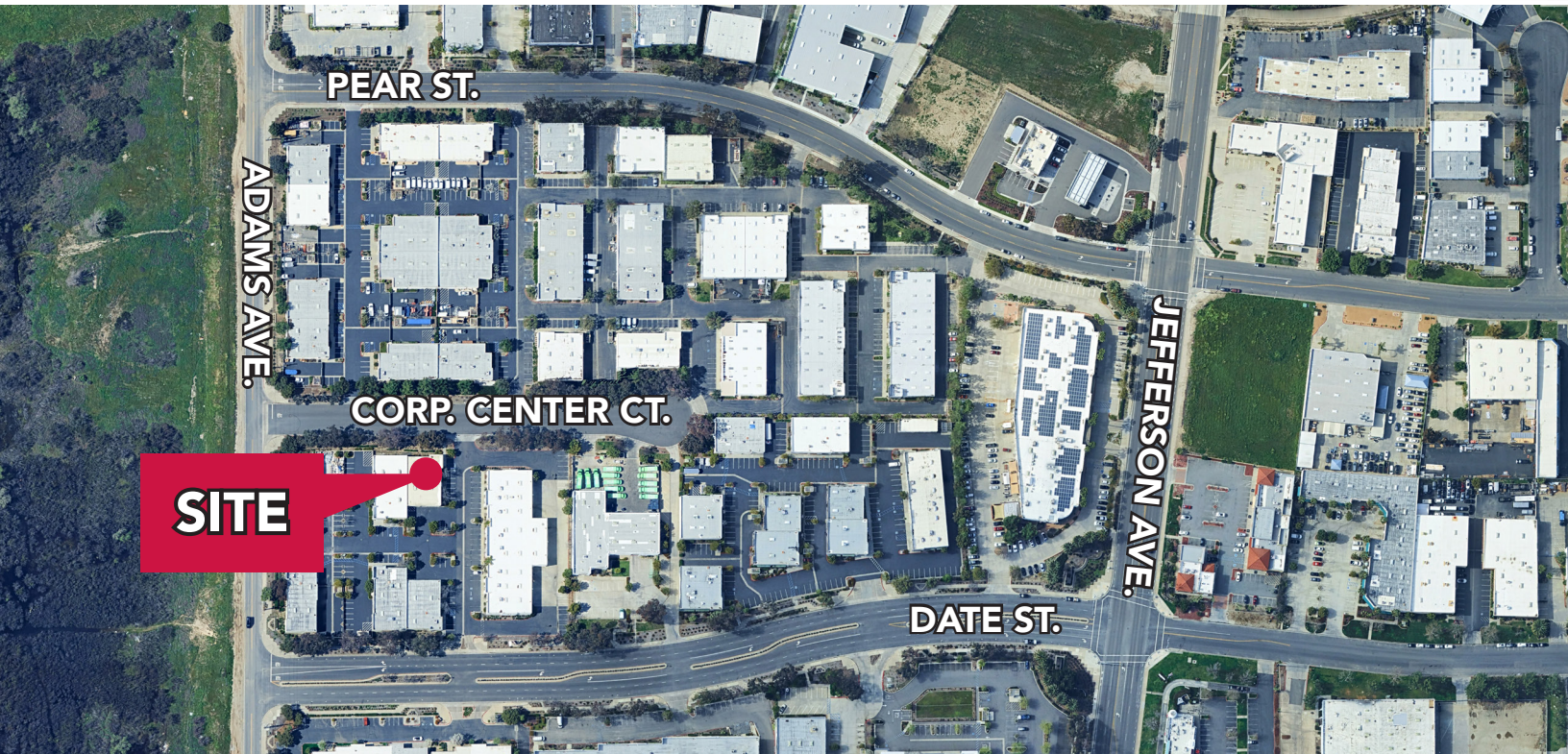
951.445.4561  
bweller@leetemecula.com  
DRE#: 02254521



No warranty or representation has been made to the accuracy of the foregoing information. Terms of sale or lease and availability are subject to change or withdrawal without notice. Lee & Associates Commercial Real Estate Services, Inc. - Riverside. 25240 Hancock Avenue, Suite 100 - Murrieta, CA 92562 Corporate ID# 01048055

**FOR SUBLEASE**  
**±4,921 SF INDUSTRIAL BUILDING**

**41680** CORPORATE  
CENTER CT.  
MURRIETA, CA



**GORDON MIZE**  
951.445.4504  
gmize@leetemecula.com  
DRE#: 01275376

**CONNOR STRODE**  
951.445.4529  
cstrode@leetemecula.com  
DRE#: 02170137

**BEN WELLER**  
951.445.4561  
bweller@leetemecula.com  
DRE#: 02254521