

# SHERMAN OAKS OFFICE SPACE

15300 Ventura Blvd, Sherman Oaks



## BENEFITS & FEATURES

- **NEW LOWERED RENT**
- HVAC Available Until 9:30 PM
- Across From Sherman Oaks Galleria
- Immediate Access to 101 & 405 Fwys
- Strong Ownership & Management
- After Hours Lobby Guard
- Monument Signage Available
- Food Amenities Walking Distance
- Fiber in Building

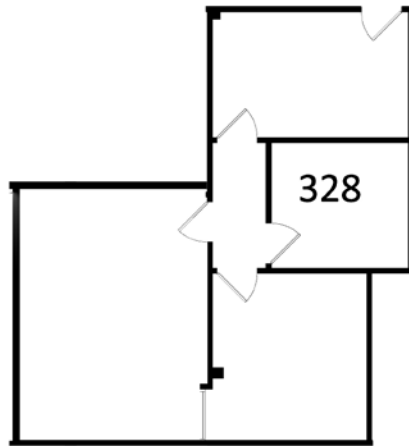
## AVAILABLE

SUITE	SIZE	RATE	TYPE
Various Suites	±470 SF - ±4,500 SF	\$2.75 - \$3.00	FSG

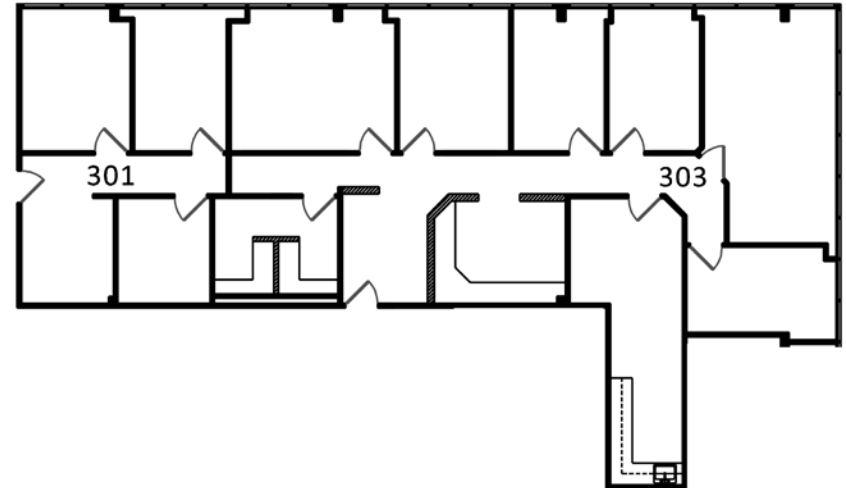
## PARKING

\$110	Roof
\$175	Reserved Single
\$260	Tandem (2 cars)

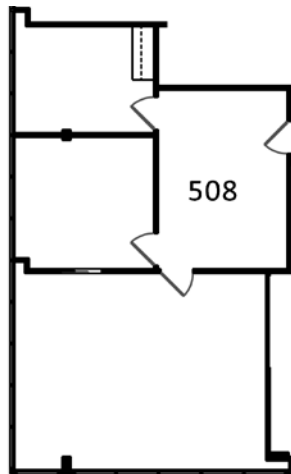
# FLOOR PLANS — SUITES



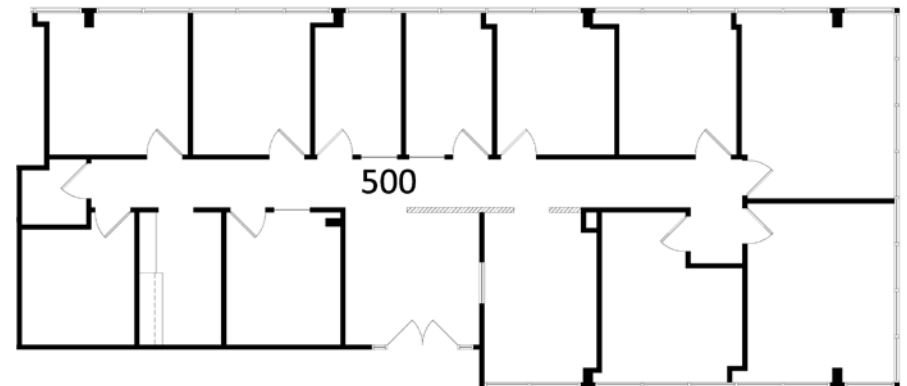
**SUITE 328 - 979 SF**



**SUITE 301 - 663 SF & SUITE 303 - 2,216 SF (2,879 SF COMBINED)**



**SUITE 508 - 1,196 SF**

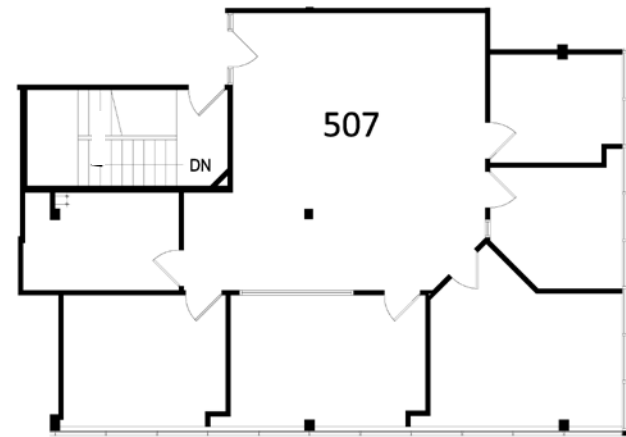


**SUITE 500 - 2,702 SF**

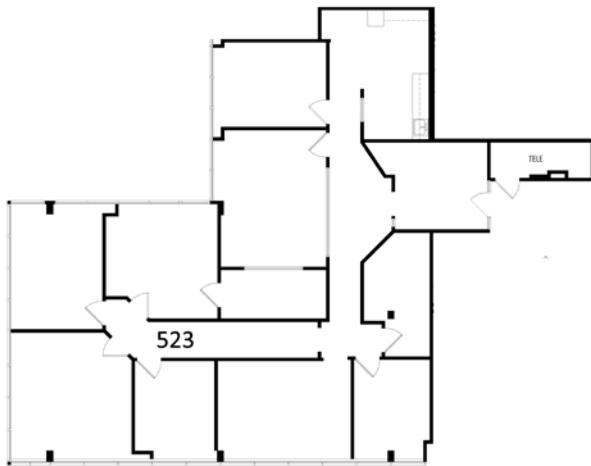
# FLOOR PLANS — SUITES



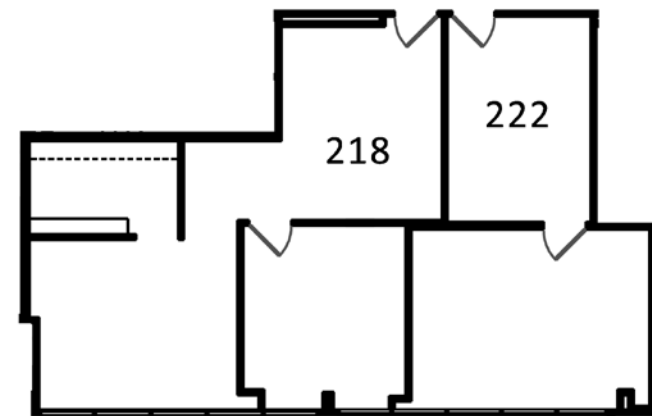
**SUITE 320 - 2,805 SF**



**SUITE 507 - 1,747 SF**



**SUITE 523 - 2,914 SF**



**SUITE 218 - 786 SF & SUITE 222 - 488 SF (1,274 SF COMBINED)**

# AMENITIES AERIAL

