

FOR LEASE - RETAIL SPACE

LYNWOOD PLAZA – 1826 ROBERTSON RD.



Retail Opportunity in the Heart of Bells Corner

Lynwood Shopping Plaza

4,174sf retail space & 3,247sf office space available

1826 Robertson Road, known to most as “Lynwood Centre”, is a 52,000 square foot retail complex situated in between Bells Corners and West Ottawa.

Anchored by BMO Bank of Montreal, The Beer Store and Pizza Pizza, Lynwood Centre features ample parking to compliment its other modern retail facilities. Drawing on the highly trafficked intersection of Robertson Road and Moodie Drive, and close proximity to the 417 Queensway, the property is well suited to retail and office users alike.

Todd Beech
Director, Leasing
(613) 230-2100 x7208
tbeech@regionalgroup.com

Regional Group
1737 Woodward Drive, 2nd
Floor
Ottawa, ON
K2C 0P9

(613) 230-2100

info@regionalgroup.com



Property Highlights

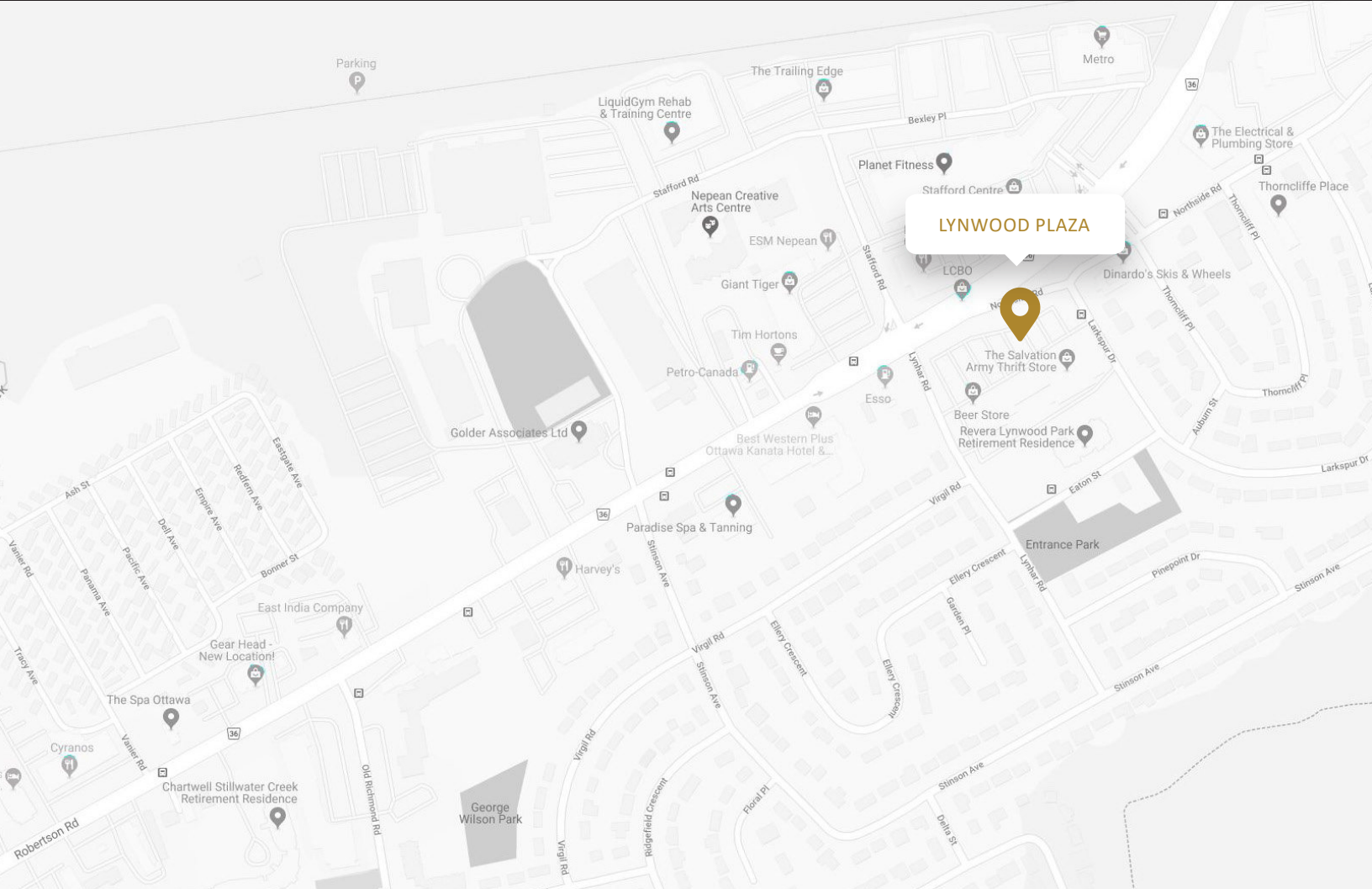
- Highly-visible exterior pylon street signage.
- Top-tier national tenants including BMO, Pizza Pizza, and the Beer Store
- High level of street-front exposure, on heavily-trafficked Robertson Rd.
- Situated within a sizable residential neighbourhood with a large customer base
- Barrier-free, fully-accessible building
- Professionally managed building with 24/7 emergency on-call service
- Large, free, 300+ space parking lot
- Professionally landscaped and gardened for a pleasant exterior environment
- Modern, exterior EIFS cladding



Availability & Rates

Suite	Area (sf)	Net Rent (PSF)	Additional Rent (PSF)	Availability
51	3,247	Call agent for pricing	\$15.13	Immediate
76	4,174	Call agent for pricing	\$15.13	Immediate

TI Allowance – Negotiable



Property Specifications

Year Constructed	1962
Construction	Concrete block/brick/steel frame
Exterior Walls	EIFS/brick/block
Roof Type	Torch on membrane/tar & gravel
Ceiling Height	14'2" slab to slab
Power	Multiple services, 120/208 amp
Loading Facilities	No
Air Conditioning	15 roof-top gas units
Heat	Gas
Sprinklered	Yes
Parking Spots	315
Elevator	No
Separately Metered	Gas and hydro (retail tenant). No additional for 3rd floor office tenant

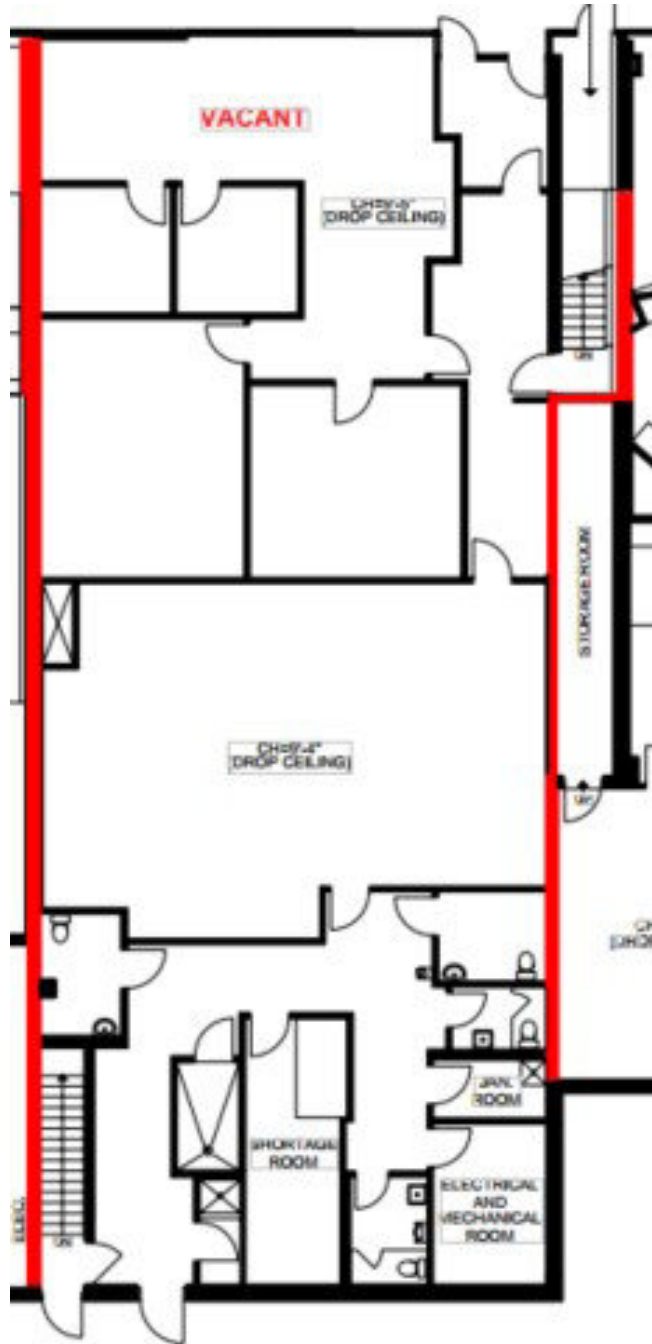
Office Space- Unit 51

3,247 sf



Prime Retail Space- Unit 76

4,174 sf





Contact us

Todd Beech
Director, Leasing
(613) 230-2100 x7208
tbeech@regionalgroup.com

Regional Group
1737 Woodward Drive, 2nd Floor
Ottawa, ON
K2C 0P9

(613) 230-2100
info@regionalgroup.com
regionalgroup.com

The information herein contained has not been verified by The Regional Group of Companies Inc. (the 'Agent'). The Agent does not warrant in any manner, implied or otherwise, that the information herein contained is accurate. The Agent does not, and will not, accept or assume any liability for any consequence or result, negative or otherwise, arising from the reliance of the party receiving the information (the 'Recipient') on the information herein contained. It is the sole and exclusive responsibility of the Recipient to independently verify all information herein contained and perform all due diligence as reasonably required. The information herein contained is subject to change and / or alteration without prior notice, and the Agent hereby reserves the exclusive right to remove from the market said information and / or the Property / Space for Lease to which it pertains. The Regional Group of Companies Inc. is acting solely as an agent for its client, and is not acting in its personal or corporate capacity.

