

16236

SAN DIEGUITO ROAD
RANCHO SANTA FE
CA 92067



Coastal Retail Office
Space Available
For Lease

NAI San Diego

**WILLIAMS
& WATT**

FAIRBANKS VILLAGE PLAZA

DESIGN + LOCATION

Top Quality Neighbors Including:

Helen Woodward Animal Center
Rancho Santa Fe Fire-Protection District
Solana Santa Fe Elementary
Horizon Prep School

The Nativity School
Fairbanks Ranch Country Club
Evergate Stables
Rancho Valencia Resort and Spa
LaValle Coastal Club



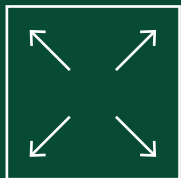
Multi-Tenant

Retail and office use



Mid-Coastal Location

Prominent Rancho Santa Fe location with a myriad of recreational activities and proximity to executive housing



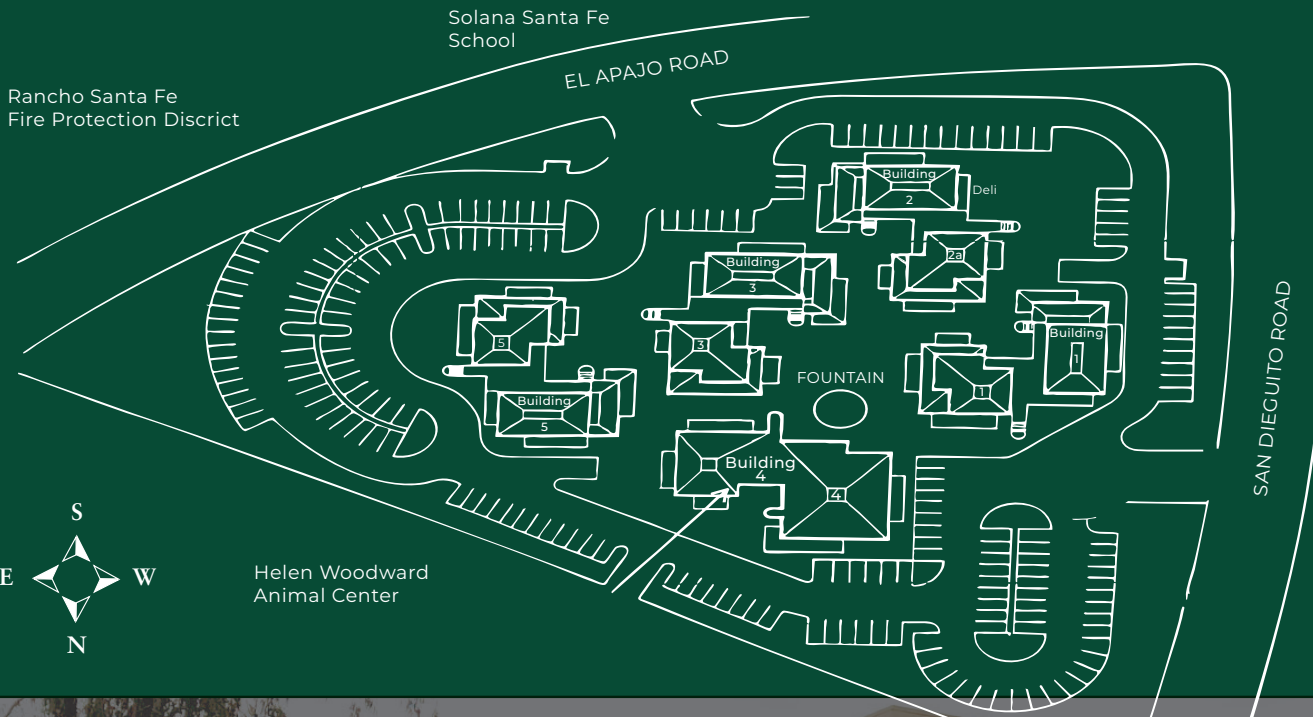
Flexibility

800-3,100 SF



Access

Easy access to I-5
and I-15



5 Building
Office/Retail
campus



Move-in Ready



Outdoor Gathering
Areas for team
building



EV Charging
12 new NACS
charging stations

SITE PLAN



CURRENT AVAILABILITY

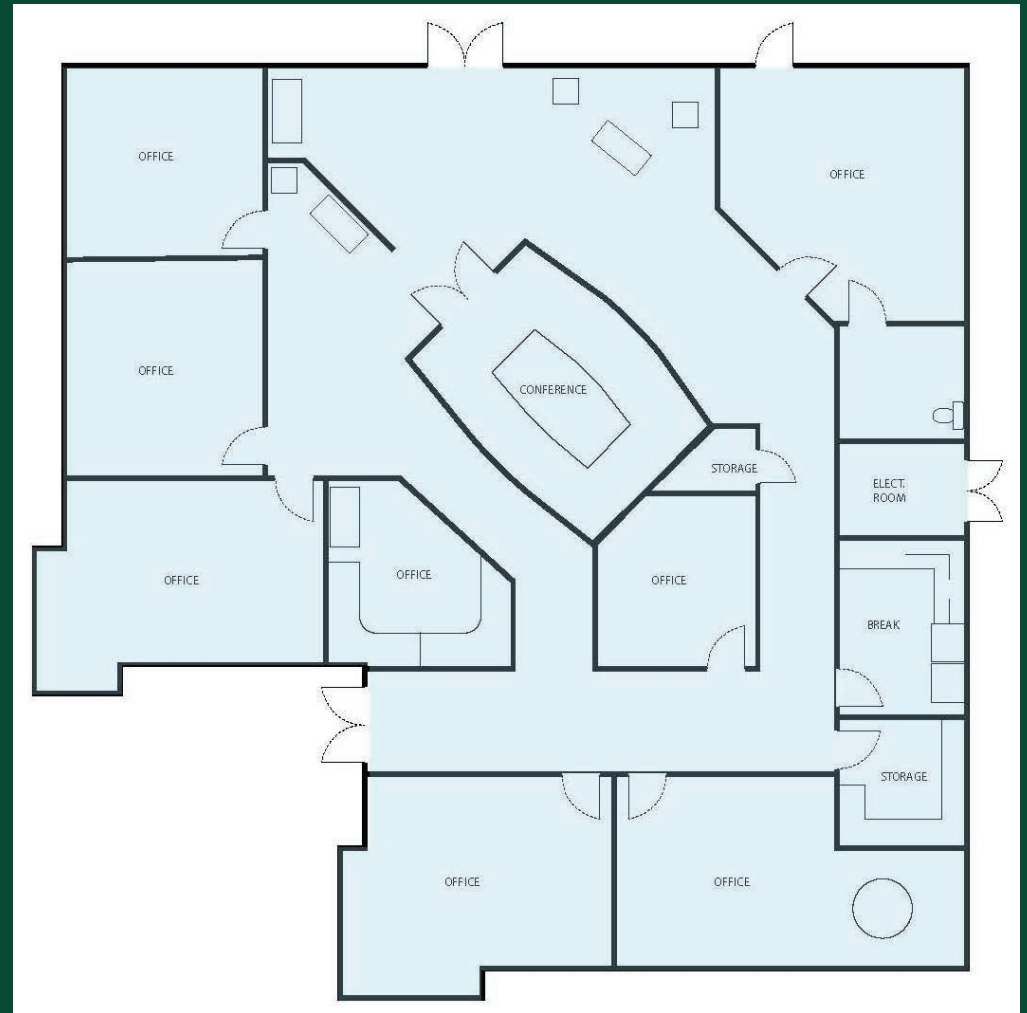


| Building | Suite | RSF | Available | Product |
|----------|-------|------------------|------------|---------------|
| #2 | 10 | 3113 (Divisible) | Immediatly | Office/Retail |
| #4 | 17 | 1163 | Immediatly | Office/Retail |
| #2 | 14 | 1064 | Leased | Office/Retail |
| #2 | 22 | 1599 | Leased | Office/Retail |

FLOOR PLAN

Building 2 Suite 10
±3113 RSF
Available Now

Fairbanks Village Plaza



Existing Layout
Office or Retail
Available Now

Building 2 Suite 10
±3113 RSF
Available Now



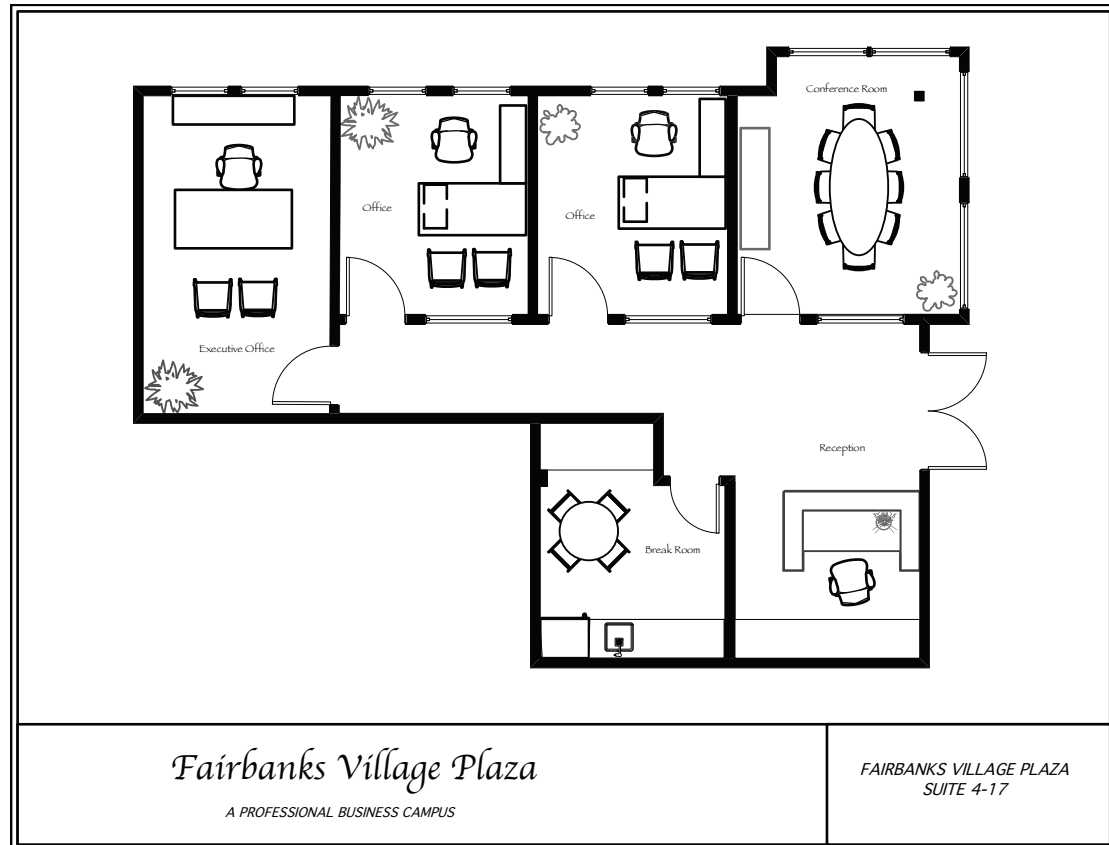
Fairbanks Village Plaza



FLOOR PLAN

Fairbanks Village Plaza

Building 4 Suite 17
±1163 RSF
Available Immediately



Existing Layout
Office or Retail
Available Now

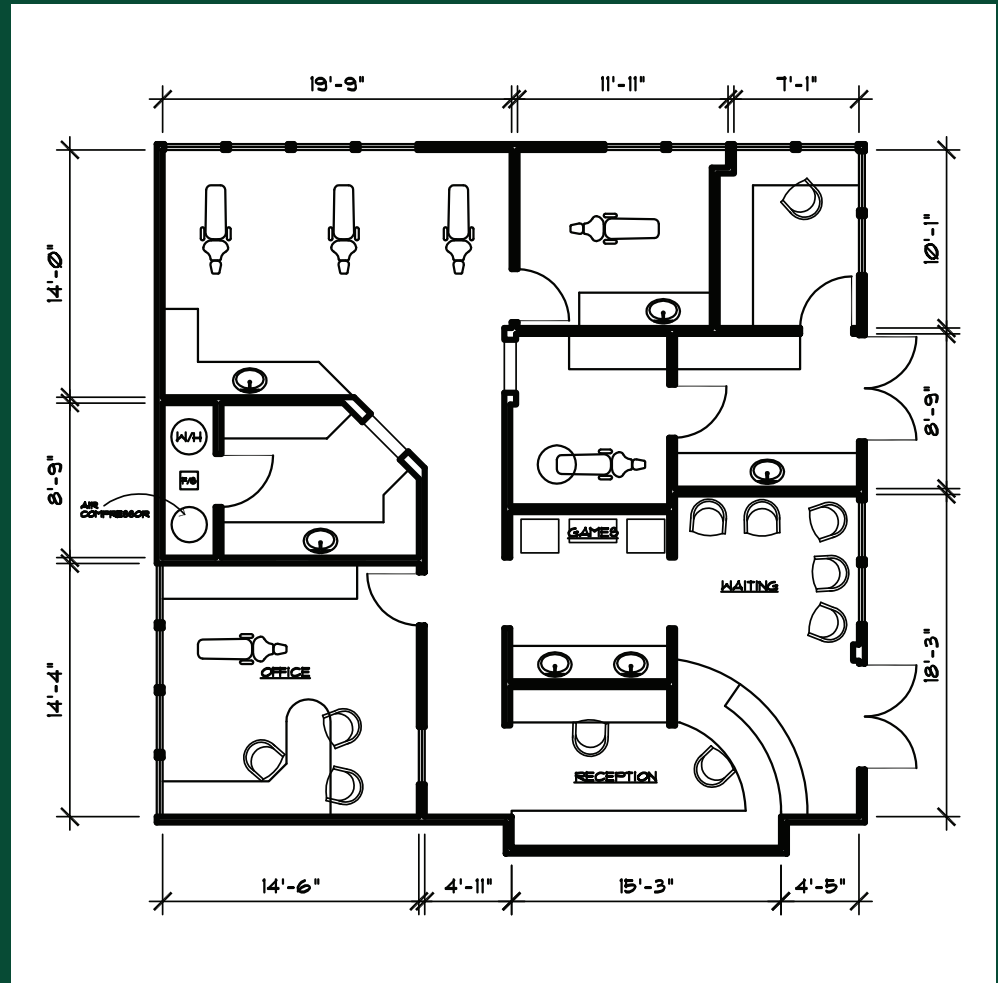
Building 4 Suite 17
±1163 RSF
Available
Immediatly



FLOOR PLAN

Building 2 Suite 22
±1599 RSF
Leased

Fairbanks Village Plaza



Existing Layout
Office or Retail
Available Now

WHY WILLIAMS & WATT?



Legacy

Experienced in San Diego real estate market



Local Ownership

Quality and community are core values



Impeccable Reputation

Honest and direct communication



Well Capitalized

Well maintained buildings



Strength In Numbers

Full service asset management team



On-site Property Management

Responsive and committed to excellence

NORTH SAN DIEGO'S

MOST ACCESSIBLE LOCATION

Drive Times To:

40 min
Orange County

27 min
Oceanside

10 min
Encinitas

15 min
La Jolla

27 min
Mission Valley

30 min
Downtown/Airport

40.0%

**COLLEGE GRADS WITH
BACHELOR'S DEGREES**

\$1.35 M

AVERAGE HOME PRICE

1,127,656

POPULATION





Fairbanks Village Plaza



16236

SAN DIEGUITO ROAD
RANCHO SANTA FE
CA 92067



DAVID HOWORKA

+1 (708) 205 6200

dhoworka@naisandiego.com

RE Lic. 02007743

NAI San Diego

WILLIAMS
& WATT

Although information has been obtained from sources deemed reliable, neither Owner makes any guarantees, warranties or representations, express or implied, as to the completeness or accuracy as to the information contained herein. Any projections, opinions, assumptions or estimates used are for example only. There may be differences between projected and actual results, and those differences may be material. The Property may be withdrawn without notice. Neither Owner accepts any liability for any loss or damage suffered by any party resulting from reliance on this information. If the recipient of this information has signed a confidentiality agreement regarding this matter, this information is subject to the terms of that agreement. ©2025. NAI San Diego. All rights reserved.