

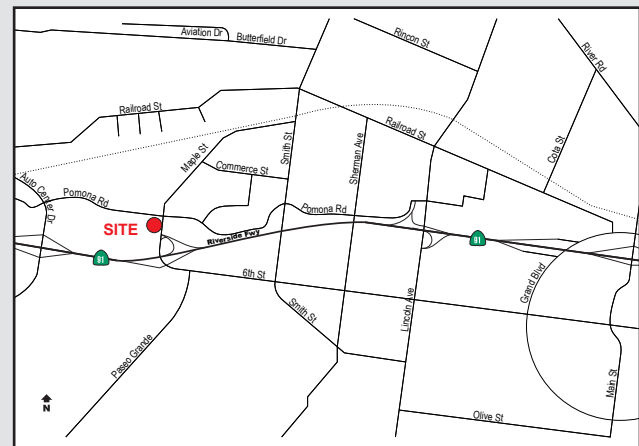
For Lease

FREEWAY FRONTAGE
Maple Lewis Business Center
±1,760 Square Feet
350 Maple Street, Unit C, Corona



Property Details

- ±500 SF of Office Space
- ±1,260 SF of Warehouse Space
- 1 Ground Level Loading Door
- Maple Street Frontage / Visibility
- High Identity Building Signage
- 14' Warehouse Clear Height
- 2:1 Parking Ratio
- 100 Amps Electrical Service
- Well Maintained Business Park
- Immediate Access to Riverside (91) Freeway



Reed Rutter
SENIOR ASSOCIATE
949.933.5744
RRutter@voitco.com
Lic. #02153762

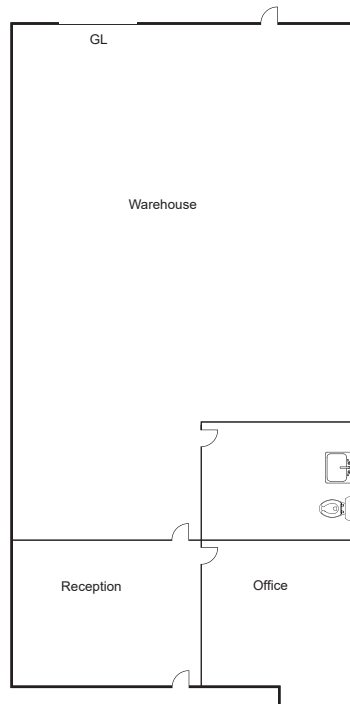
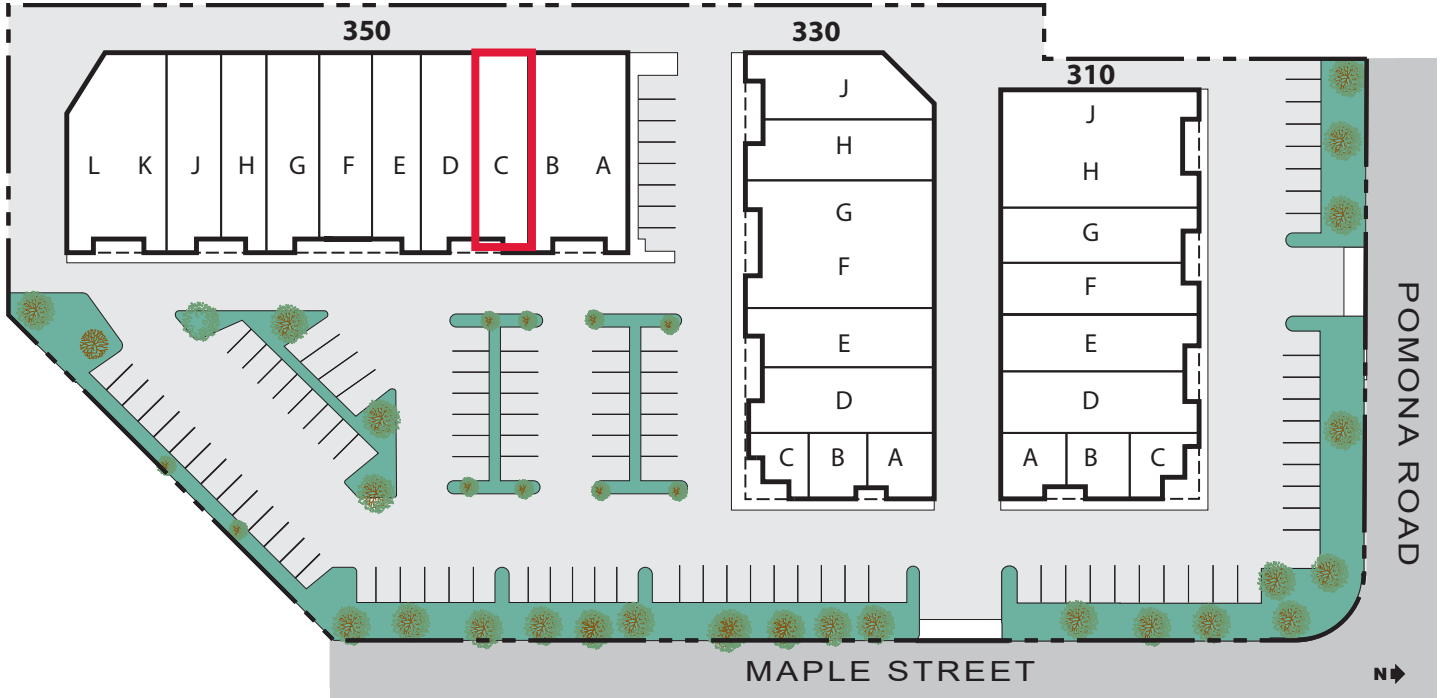
Michael Zehner
SENIOR VICE PRESIDENT
714.935.2328
mczehner@voitco.com
Lic. # 01917963

Voit
REAL ESTATE SERVICES

2020 Main Street, Suite 100 | Irvine, California 92614 | 949.851.5100 | 949.261.9092 Fax | Lic #01991785 | www.VoitCo.com

For Lease

FREEWAY FRONTAGE
Maple Lewis Business Center
±1,760 Square Feet
350 Maple Street, Unit C, Corona



Reed Rutter
SENIOR ASSOCIATE
949.933.5744
RRutter@voitco.com
Lic. #02153762

Michael Zehner
SENIOR VICE PRESIDENT
714.935.2328
mczehner@voitco.com
Lic. # 01917963

Voit
REAL ESTATE SERVICES

2020 Main Street, Suite 100 | Irvine, California 92614 | 949.851.5100 | 949.261.9092 Fax | Lic #01991785 | www.VoitCo.com