

Compton

*For Rent*  
**126 Albert Street  
London NW1**



126 Albert Street, is a self-contained  
HQ opportunity in the heart of  
Camden with character, light, and  
unbeatable connectivity

**For Rent**

**126 Albert Street**  
126 Albert Street  
London NW1

**Size**

725 - 19,002 Ft<sup>2</sup>

**Fitout**

Fitted. Can be fitted out subject to terms

**Description**

Originally opened by Princess Alexandra in 1976, ONE TWO SIX began life as The King's Fund Centre, a hub for healthcare innovation and learning. In

1995, it became the global HQ of World ORT, continuing its legacy of education and social impact. Now, this iconic Camden building is being reimagined as a bold, designed workspace, combining 1970s character with contemporary thinking.



**For Rent**

**126 Albert Street**  
126 Albert Street  
London NW1

**Size**

725 - 19,002 Ft<sup>2</sup>

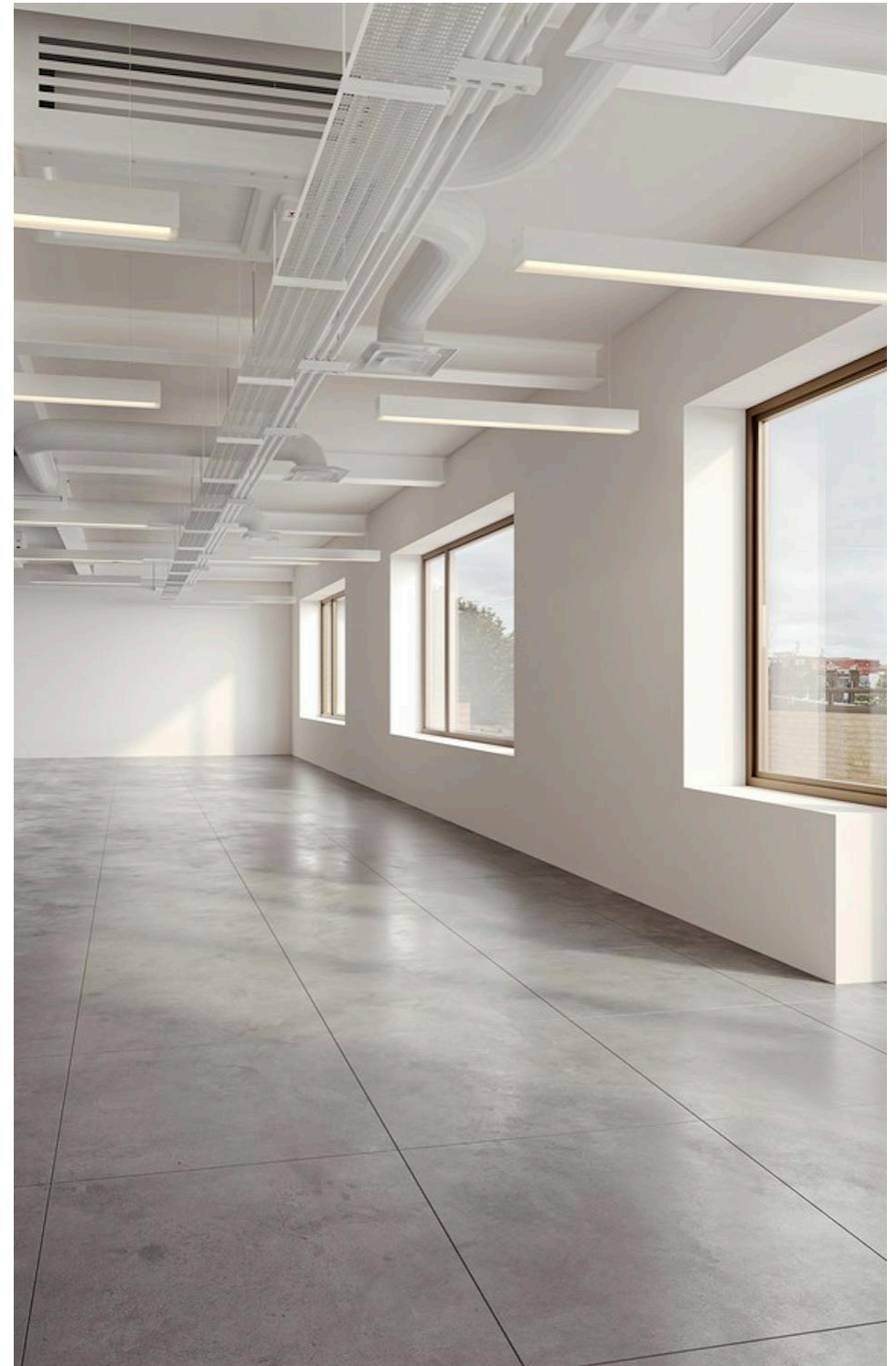
**Fitout**

Fitted. Can be fitted out subject to terms

**Description**

126 Albert Street (formerly Ort House) is a 1970s brick-clad office and residential property designed by Sheppard Robson Architects. The building comprises lower ground, ground and three upper floors, arranged around an internal core with associated amenities. The current proposal aims to modernise the accommodation by creating flexible, open-plan office space suited to 21st-century standards. Enhancements include a reconfigured entrance, new courtyard to improve natural light, upgraded plant and services, and improved landscaping around the building.

The refurbishment will retain the existing architectural character but introduce subtle contemporary elements to increase energy efficiency and workplace quality. Enlarged windows on the Albert



**Compton**

*For Rent*

**126 Albert Street**  
126 Albert Street  
London NW1

*External \**

**Size**

725 - 19,002 Ft<sup>2</sup>

**Fitout**

Fitted. Can be fitted out subject to terms



Compton

For Rent

126 Albert Street  
126 Albert Street  
London NW1

EXTERIOR 2 \*



Compton

For Rent

126 Albert Street  
126 Albert Street  
London NW1

First Floor CAT B\*



LEVEL 03 CAT A \*

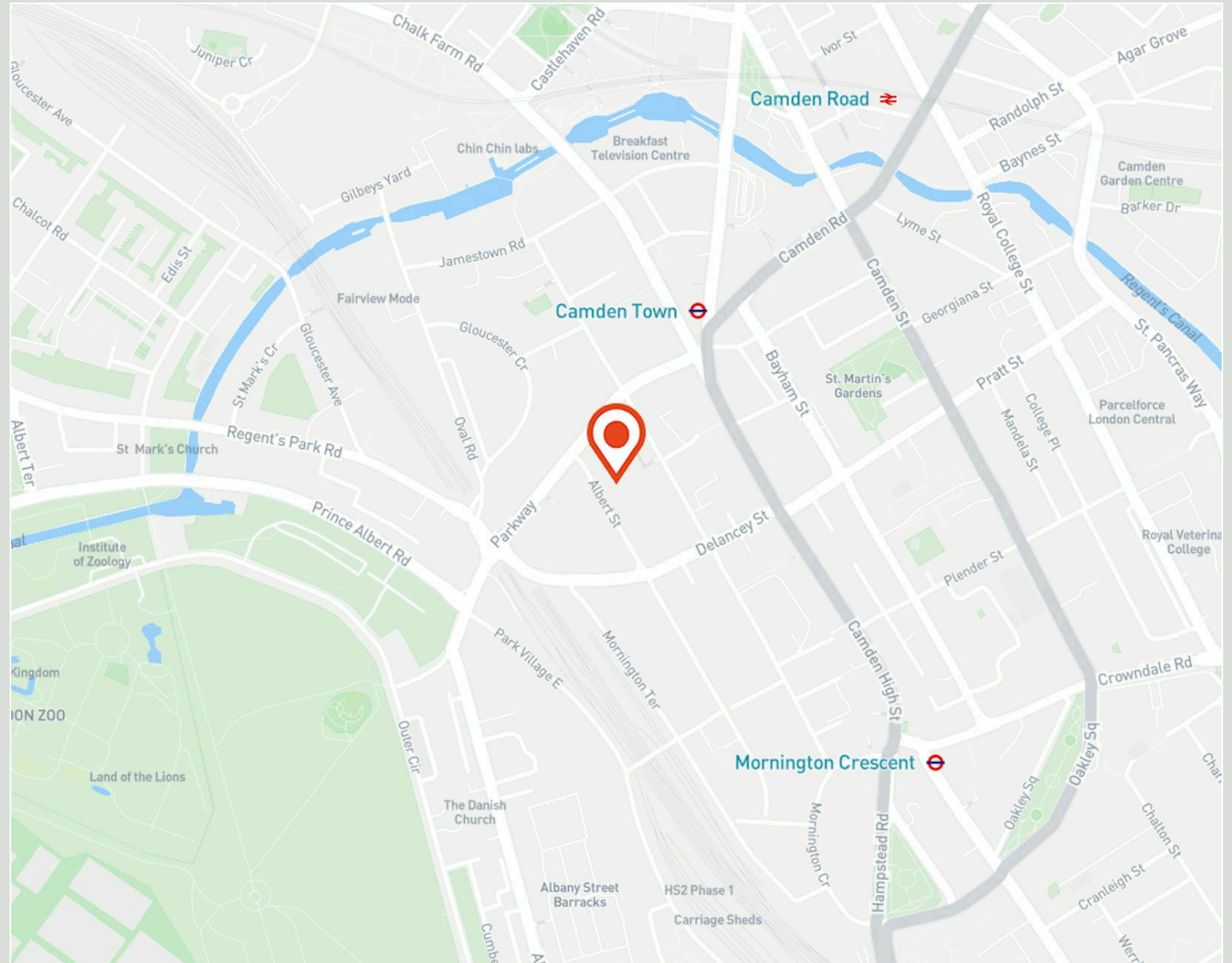
## For Rent

**126 Albert Street**  
126 Albert Street  
London NW1

## Location

Set on leafy Albert Street, ONE TWO SIX offers the perfect balance of energy and calm, with Camden's markets, green spaces, and creative culture right on your doorstep.

The property is located on Albert Street in Camden Town, within the London Borough of Camden approximately 2.8 miles north of Central London. The site benefits from excellent public transport accessibility, with Camden Town Underground Station less than ten minutes' walk away and multiple bus routes serving the area. It lies within a dense urban environment featuring a mix of residential, commercial, and leisure uses, offering strong connectivity and local amenities. The area's high PTAL rating (6a) confirms its suitability for continued employment and office use.



For Rent

126 Albert Street  
126 Albert Street  
London NW1

Ground Floor CAT A \*



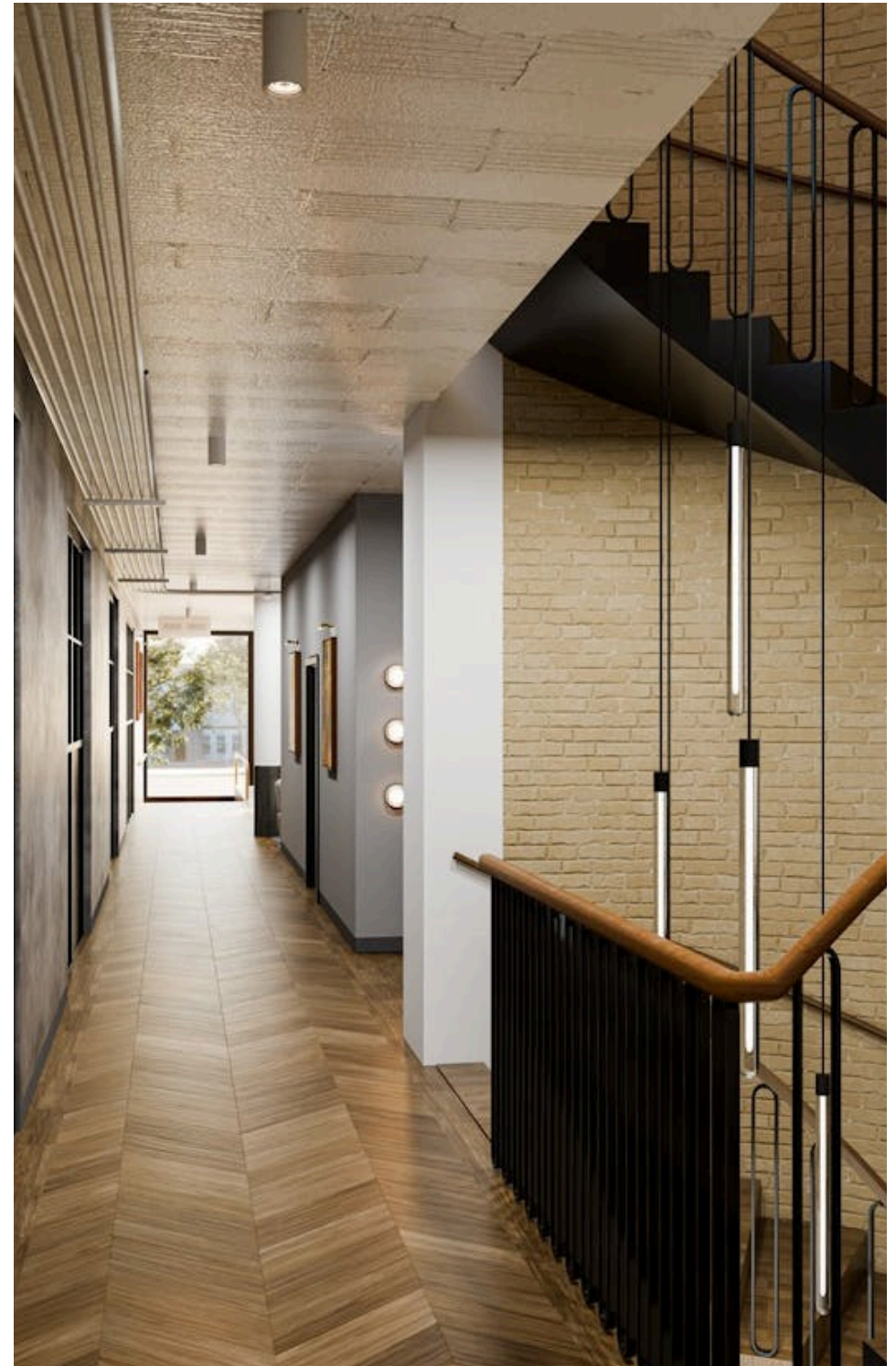
For Rent

**126 Albert Street**  
126 Albert Street  
London NW1

## Amenities

- Set on leafy Albert Street, ONE TWO SIX offers the perfect balance of energy and calm, with Camden's markets, green spaces, and creative culture right on your doorstep
- Striking original architecture
- Private terraces & landscaped garden
- End-of-trip & cycle facilities
- Characterful original brickwork and exposed architectural details
- Generous 3m+ ceiling heights throughout
- Two passenger lifts
- Expansive, landscaped rear garden
- Two private external terraces on upper levels, including a 60sqm roof terrace
- Stylishly refurbished office building with contemporary finishes and a bright, open-plan layout designed for modern working
- Flooded with natural light thanks to enlarged windows and new internal lightwells creating a

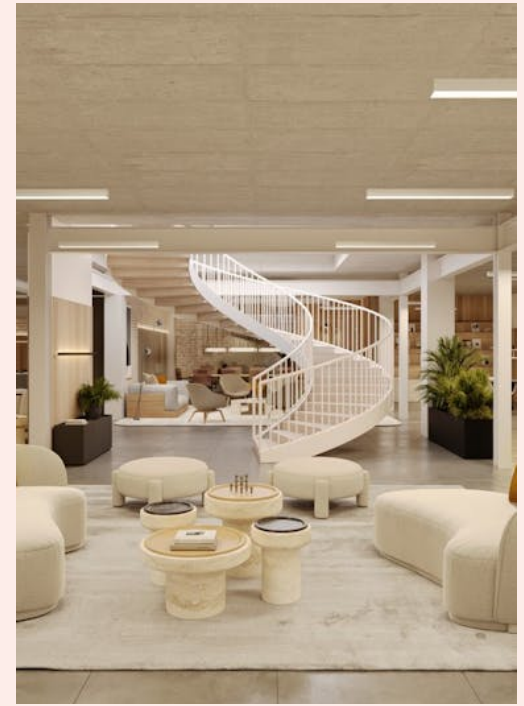
Compton



*For Rent*

**126 Albert Street**  
126 Albert Street  
London NW1

*Lower Ground CAT B \**



*EXTERIOR 3 \**

For Rent

126 Albert Street  
126 Albert Street  
London NW1

Availability

Name	Sq Ft	Rent (Sq Ft)	Rates Payable (Sq Ft)	Service Charge (Sq Ft)	Total /Sq Ft	Total Year	Availability
3rd	725	-	On Application	On Application	-	-	Available
2nd	1,076	-	On Application	On Application	-	-	Available
1st	5,834	-	On Application	On Application	-	-	Available
Ground	5,854	-	On Application	On Application	-	-	Available
Lower Ground	5,513	-	On Application	On Application	-	-	Available
<b>Total</b>	<b>19,002</b>						

**For Rent**

**126 Albert Street**  
126 Albert Street  
London NW1

**Tenure**

New Lease

**Availability**

Available Q2 2026

**Legal Costs**

Each party to bear their own costs

**VAT**

Applicable

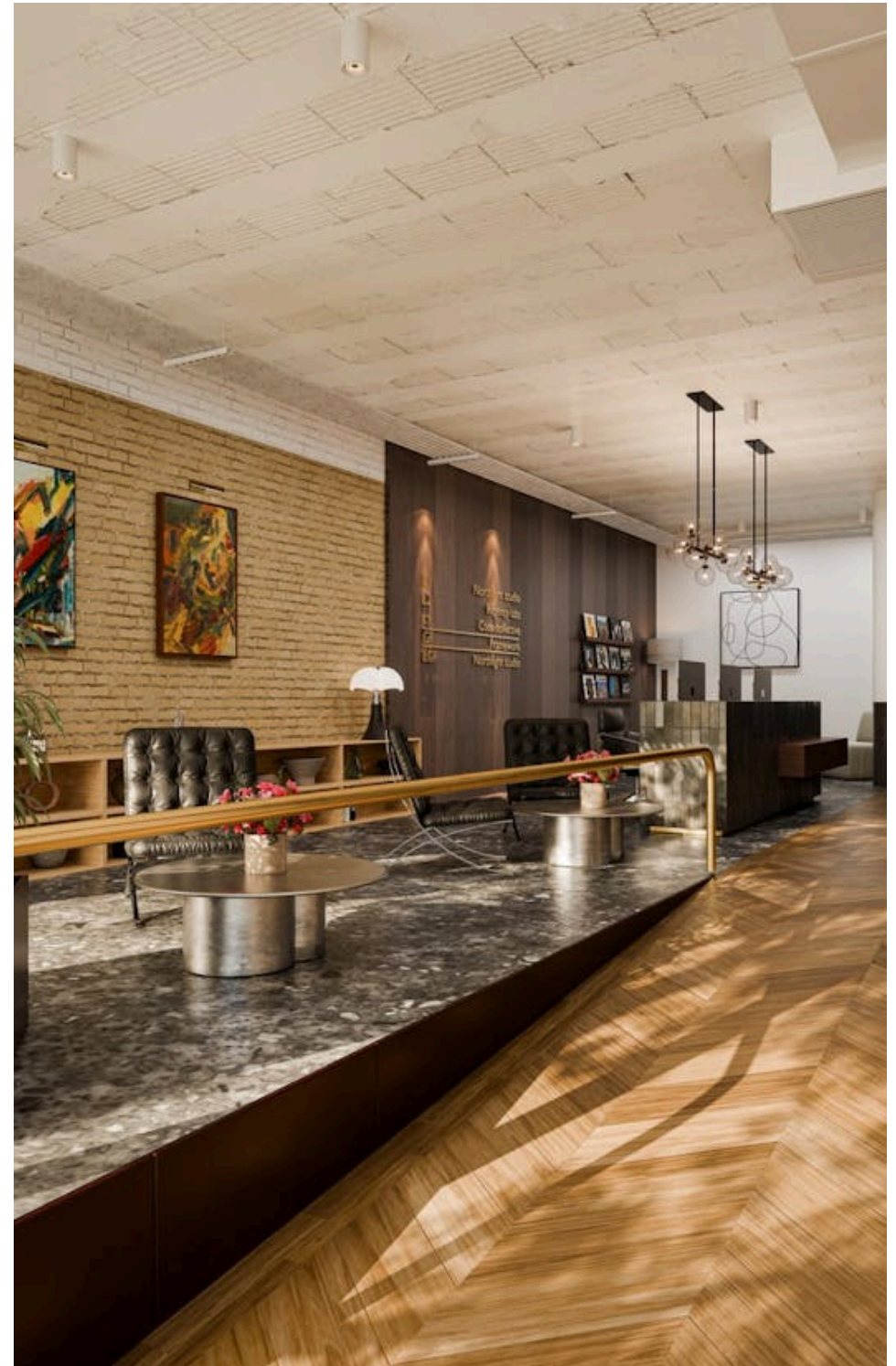
**Compton Concierge**

Want your workspace *managed?*

Find out more

[compton.london/concierge](https://compton.london/concierge)

Compton



Contact Us

[compton.london](https://www.compton.london)

020 7101 2020

[enquiries@compton.london](mailto:enquiries@compton.london)

All appointments to view must be arranged via sole agents, Compton, through:



**Sarah Hill**

[sh@compton.london](mailto:sh@compton.london)

0207 101 2020 | 07936 338 774



**Elliott Stern**

[es@compton.london](mailto:es@compton.london)

0207 101 2020 | 07834 918700