

# North Ridge Trail Logistics Center

Introducing 229,064 SF of Flexible Logistics Space Delivering in Q1 2027



| 450 Deen Still Road, Davenport, FL



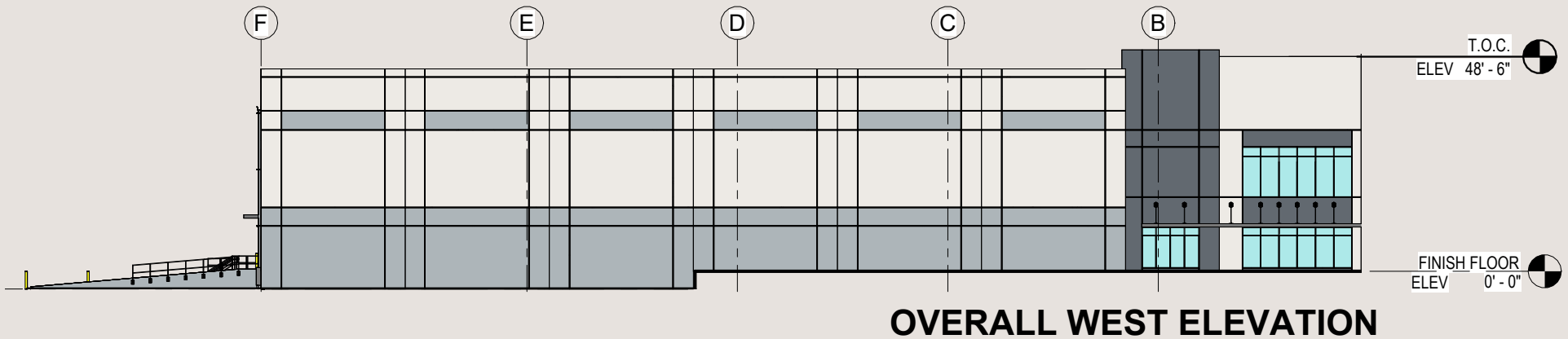
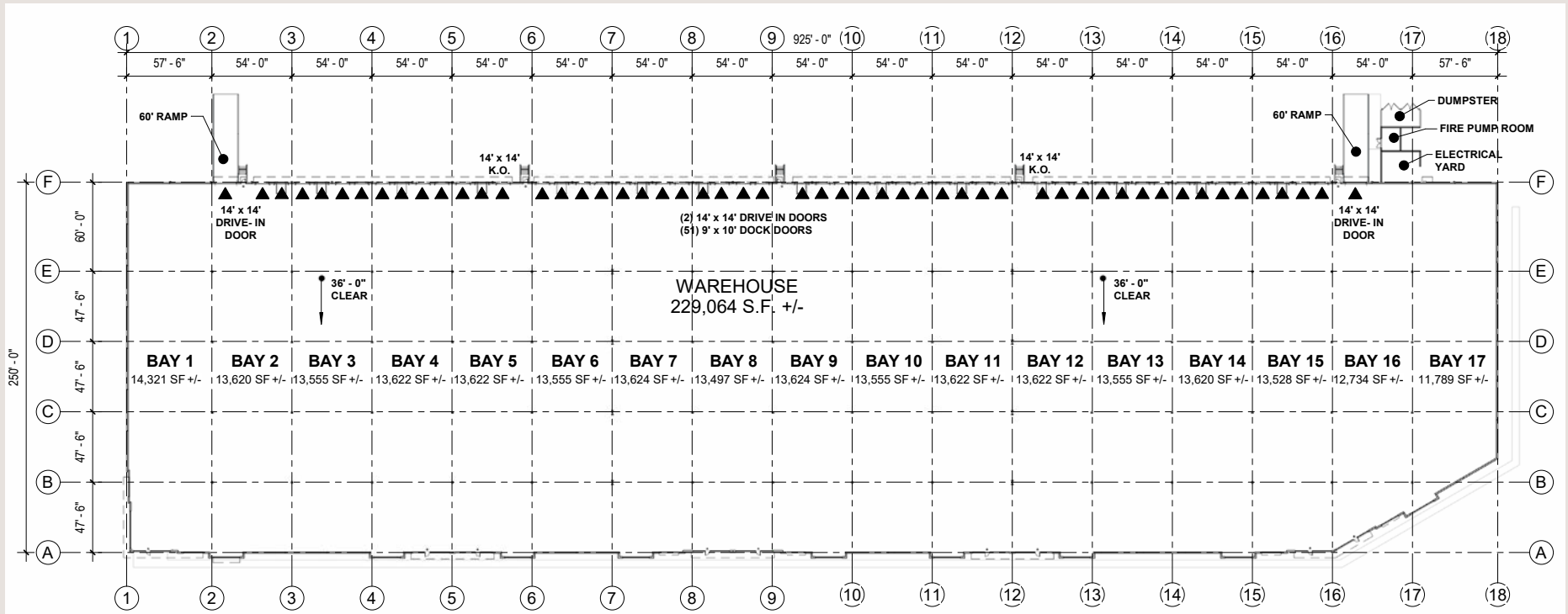
# SITE PLAN and SPECS

- 229,064 SF Class A building
- Divisible to 52,000 SF
- Build-to-suit office
- 36' clear height
- 51 - 9' x 10' dock doors
- 2 - 14' x 14' ramps with 4 knockouts available
- 250' building depth
- ESFR sprinklers
- Tilt wall construction
- Rear load
- 130' truck court
- 162 auto parking spaces
- 0.75/1,000 SF parking ratio
- 115 trailer parking spaces or yard space
- 37.45 acre site
- Zoned BPC-1X/COREX
- Q1 2027 delivery

**PLEASE CALL FOR PRICING**

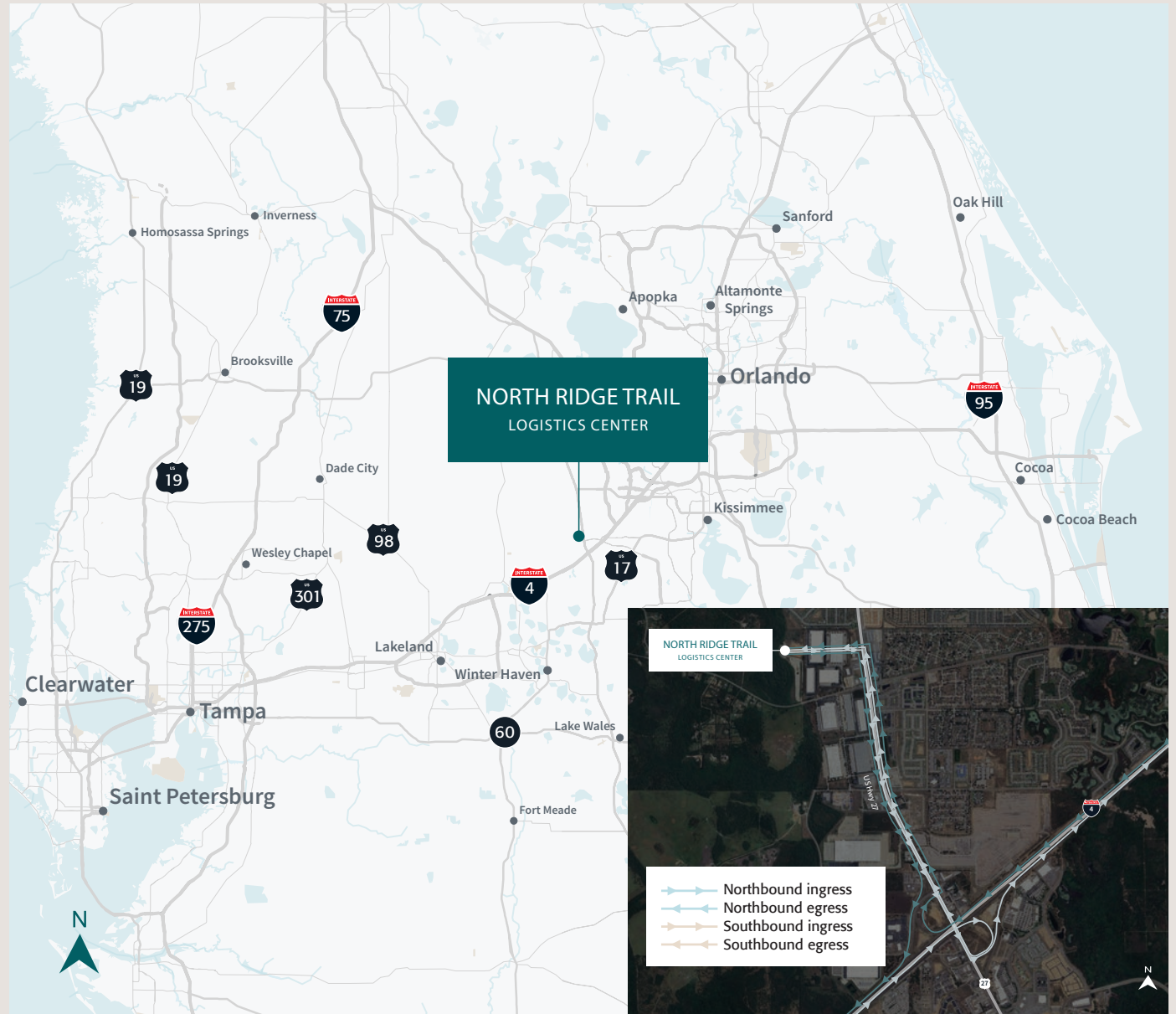


# LEASING PLAN



# EXCELLENT CONNECTIVITY TO NEARBY CITIES & BEYOND

- Excellent location just west of U.S. Highway 27
- Six minutes to the U.S. Highway 27-Interstate 4 interchange
- Nearby distributors include Amazon, daltile, FedEx, UPS, Vistar and Walmart
- Other companies located in Davenport include Cargill, cnc cabinetry, McLane, Nestle, Smart Courier and XPO Logistics
- Over three million potential customers within a one-hour drive
- Distance to major Central Florida cities:
  - Lakeland - 27 miles
  - Orlando - 30 miles
  - Tampa - 58 miles



# TREMENDOUS LOCATION FOR CONSUMER REACH

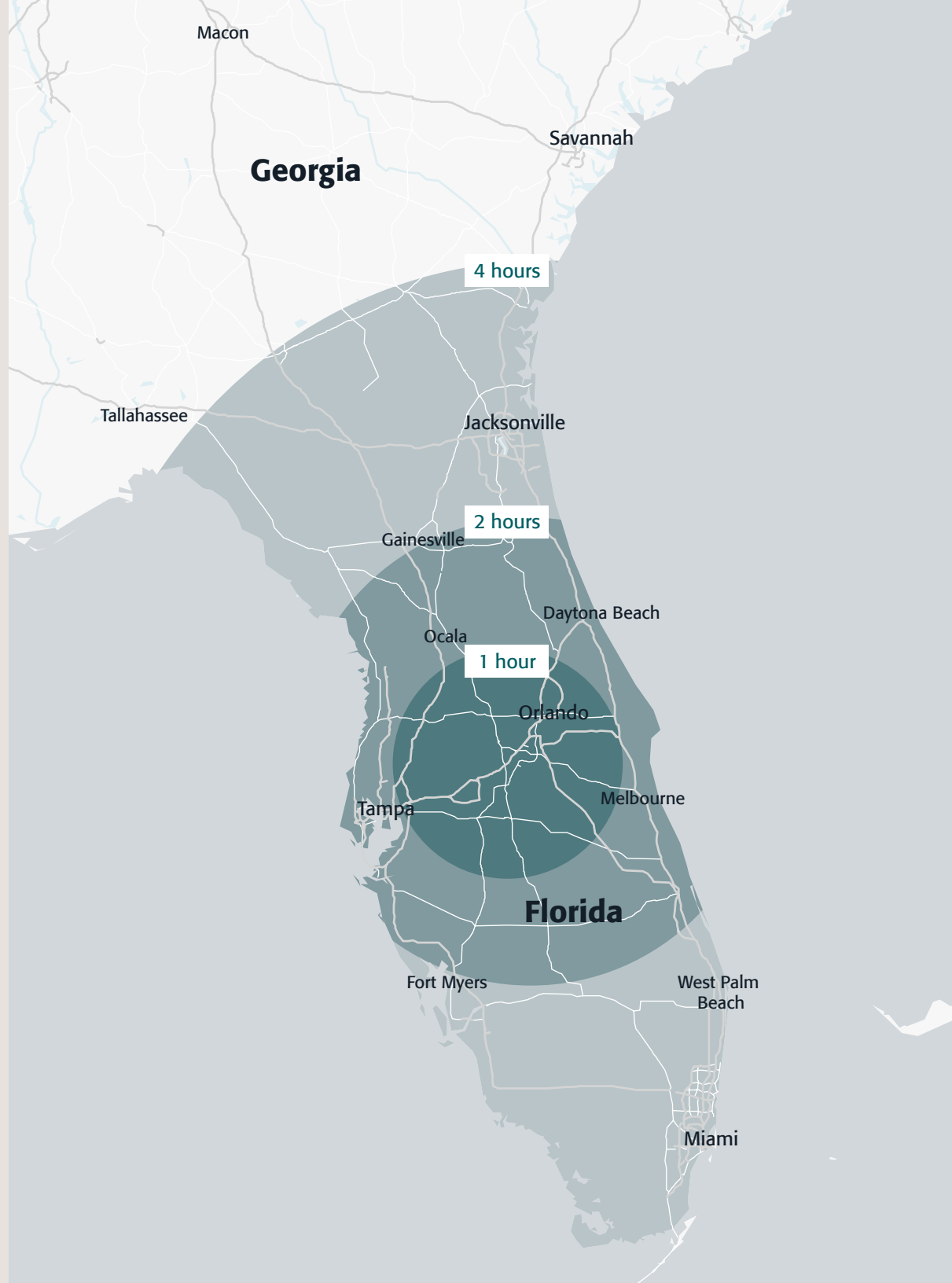
## Key Distances



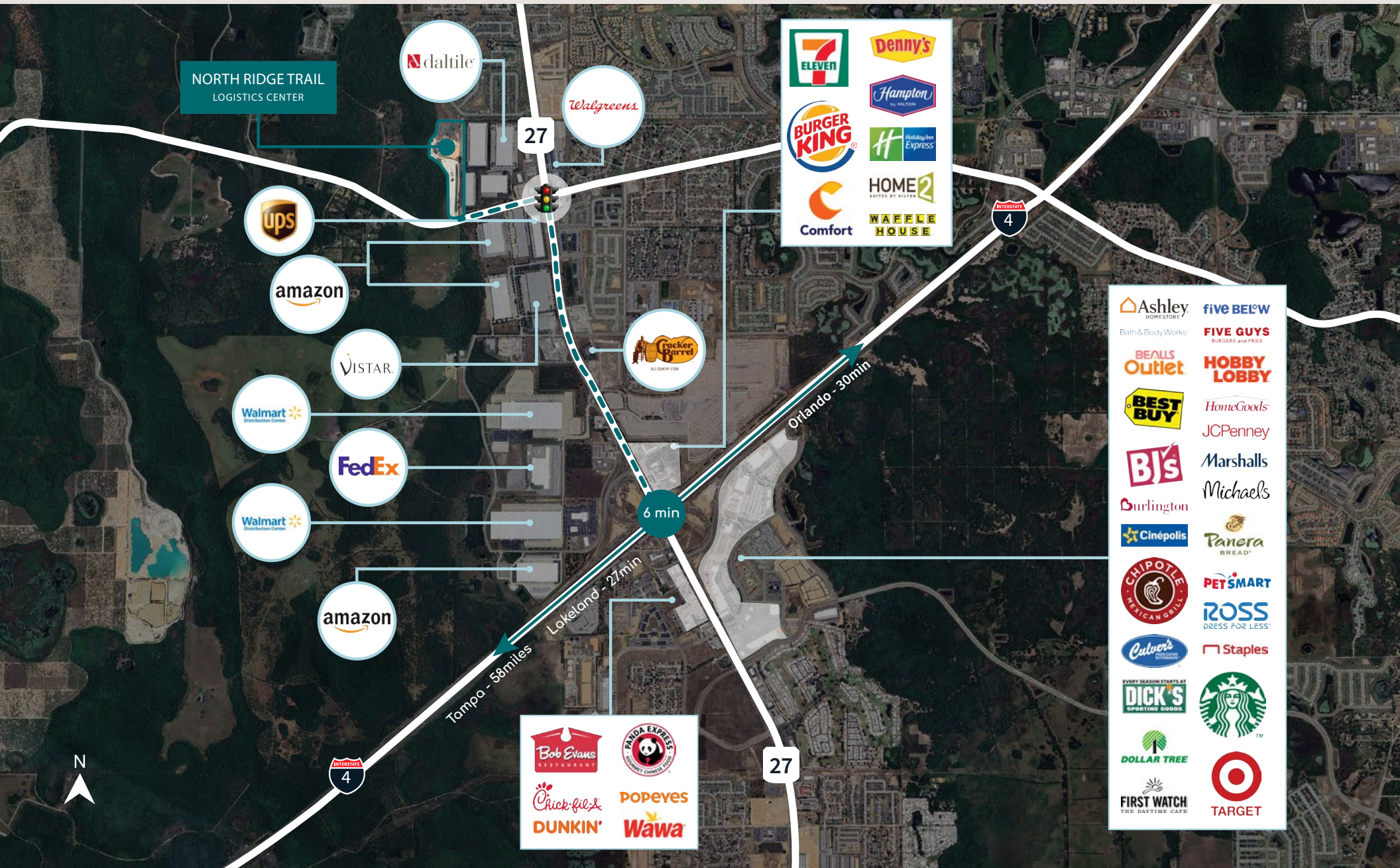
- 0.8 miles to US 27
- 2.9 miles to I-4
- 6.2 miles to SR 429
- 8.8 miles to SR 417
- 29 miles to Orlando Int'l Airport
- 29.5 miles to Orlando
- 58 miles to Tampa
- 169 miles to Jacksonville
- 238 miles to Miami
- 440 miles to Atlanta, GA

## Demographics By Drive Time

	1 hour	2 hours	4 hours
Populations	3,386,168	9,817,139	19,625,300
Households	1,255,760	3,960,317	7,851,064
Avg HH Income	\$91,918	\$93,605	\$96,311
Businesses	135,664	396,909	905,267
Employees	1,505,880	3,966,527	8,297,605



# ABUNDANT AMENITIES JUST MINUTES AWAY



# North Ridge Trail Logistics Center

450 Deen Still Road, Davenport, FL



## Bobby Isola, SIOR, CCIM

Executive Managing Director  
booby.isola@jll.com  
T +1 407 930 1804

## Matt Sullivan, SIOR, CCIM

Executive Managing Director  
matt.sullivan@jll.com  
T +1 407 930 1802

## Cameron Montgomery

Executive Vice President  
cameron.montgomery@jll.com  
T +1 407 982 8650

**EASTGROUP**  
PROPERTIES



Although information has been obtained from sources deemed reliable, neither Owner nor JLL makes any guarantees, warranties or representations, express or implied, as to the completeness or accuracy as to the information contained herein. Any projections, opinions, assumptions or estimates used are for example only. There may be differences between projected and actual results, and those differences may be material. The Property may be withdrawn without notice. Neither Owner nor JLL accepts any liability for any loss or damage suffered by any party resulting from reliance on this information. If the recipient of this information has signed a confidentiality agreement regarding this matter, this information is subject to the terms of that agreement. © 2026 Jones Lang LaSalle IP, Inc. All rights reserved.