

FOR LEASE  
34-500 GATEWAY DRIVE, UNIT 100  
PALM DESERT, CA



**UNIT 100**  
**4,716 SF Industrial/Flex Suite**  
**\$1.40/SF Per Month MG**

- 4,716 square feet industrial/flex suite in well-kept and managed Point Monterey Business Park
- 3,716 square feet warehouse with evaporative cooler
- 1,000 square feet approximately A/C office area
- One 12' x 14' roll-up door
- \$6,602.40 per month plus Common Area Maintenance of \$300.00/month for pro-rata share of water/sewer, trash pick-up, HVAC recurring maintenance and separately metered utilities
- Easy access to I-10 and Monterey Avenue



**Fabio Ceresa**  
fceresa@leedesert.com  
Mobile: 760.218.0103  
Office: 760.346.2522  
LIC #01304059

73000 Highway 111, Suite 200 | Palm Desert, CA 92260 | [www.LeePalmDesert.com](http://www.LeePalmDesert.com) | Corp ID # 01911964

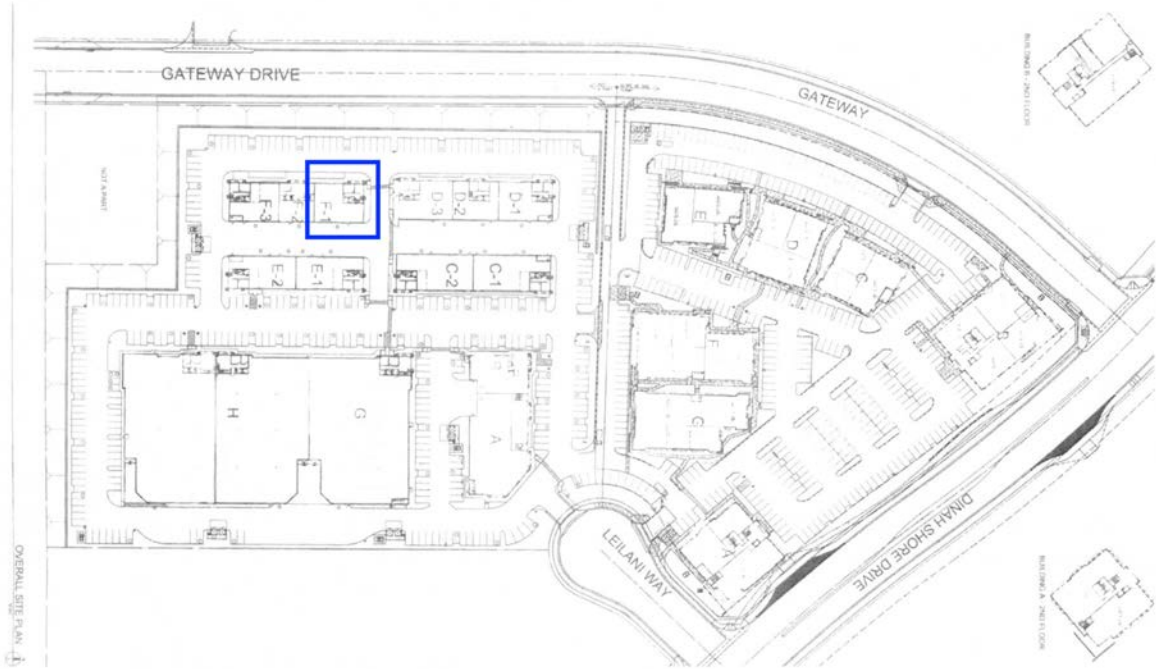


All information furnished regarding property for sale, rental or financing is from sources deemed reliable, but no warranty or representation is made to the accuracy thereof and same is submitted to errors, omissions, change of price, rental or other conditions prior to sale, lease or financing or withdrawal without notice. No liability of any kind is to be imposed on the broker herein.

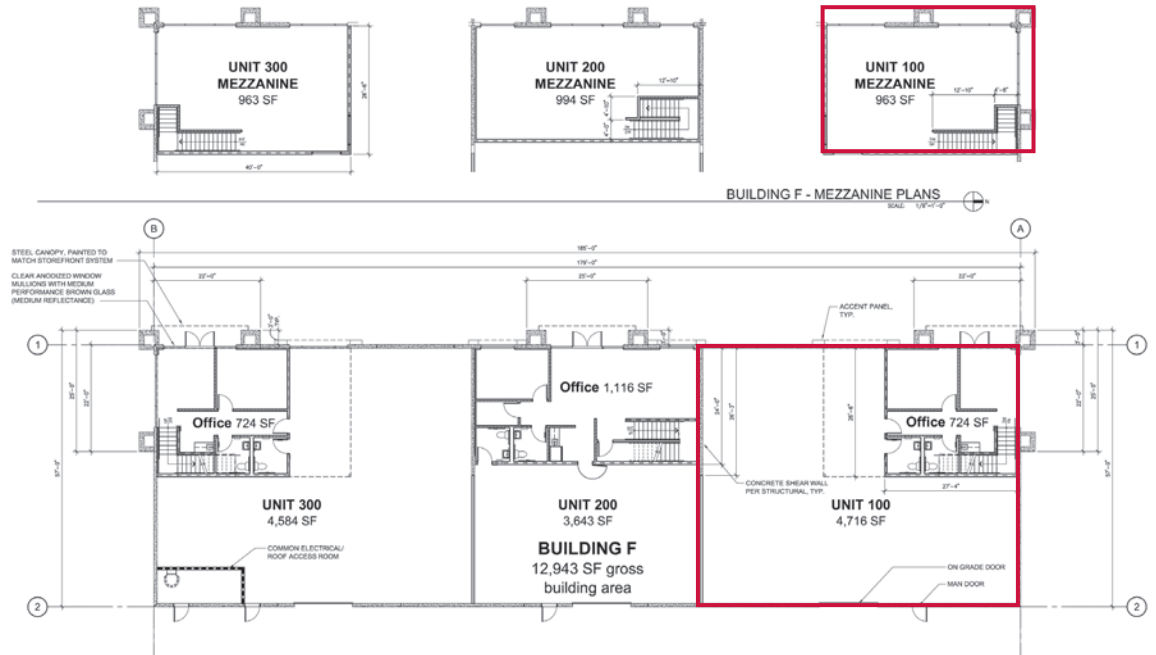
**FOR LEASE**  
**34-500 GATEWAY DRIVE, UNIT 100**  
**PALM DESERT, CA**



**SITE PLAN**  
**POINTE MONTEREY BUSINESS PARK**



**FLOOR PLAN**  
**SUITE 100**



**Fabio Ceresa**  
 fceresa@leedesert.com  
 Mobile: 760.218.0103  
 Office: 760.346.2522  
 LIC #01304059

73000 Highway 111, Suite 200 | Palm Desert, CA 92260 | www.LeePalmDesert.com | Corp ID # 01911964



All information furnished regarding property for sale, rental or financing is from sources deemed reliable, but no warranty or representation is made to the accuracy thereof and same is submitted to errors, omissions, change of price, rental or other conditions prior to sale, lease or financing or withdrawal without notice. No liability of any kind is to be imposed on the broker herein.