

For Lease

1959 Palomar Oaks Way, Carlsbad, CA 92011



Matty Sundberg
Senior Vice President
+1 760 438 8518
matty.sundberg@cbre.com
Lic. 01257446
www.cbre.com/sandiego

Bob Cowan
First Vice President
+1 760 438 8510
bob.cowan@cbre.com
Lic. 01838109

CBRE

PROPERTY FEATURES



HIGHLIGHTS

- » Conveniently located 1 mile from Palomar Regional Airport, halfway between Irvine and San Diego
- » Easy access to Interstate 5 freeway via Palomar Airport Road
- » Close proximity to restaurants, hotels, shopping and executive housing
- » Serene park like setting with lush landscaping
- » 4.0/1,000 SF parking ratio
- » 24 hour, card key access/security system
- » Monument and building signage available

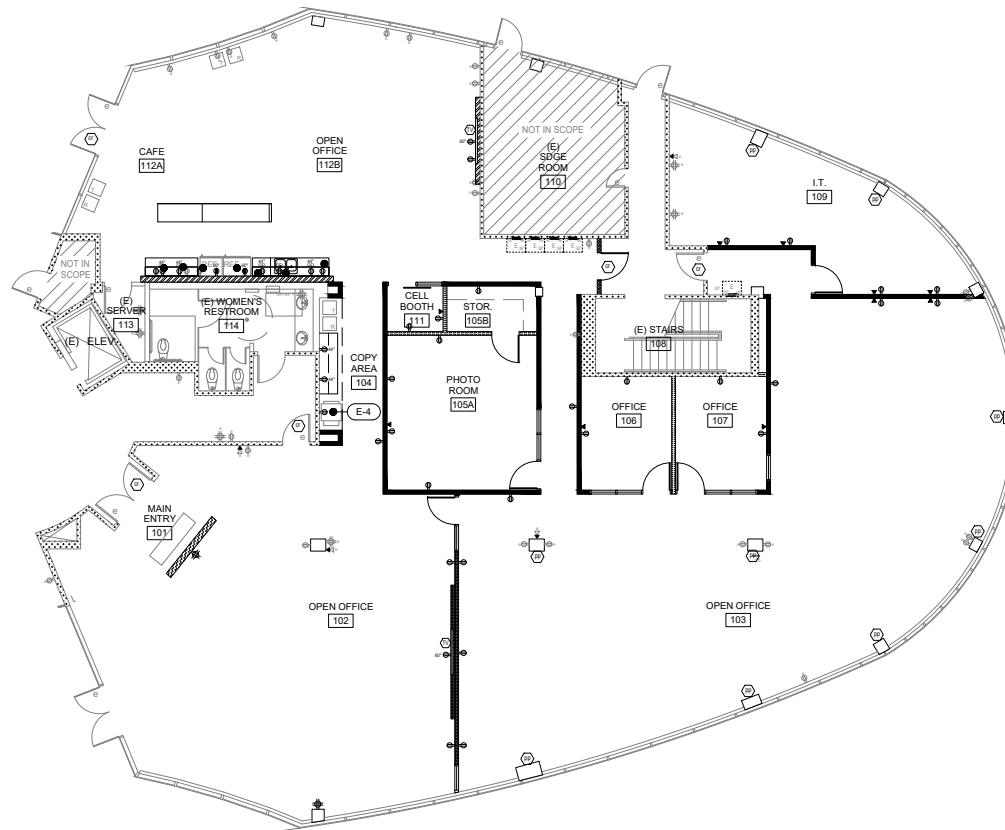
AVAILABILITY

- » Suite 100/120 | 6,869 RSF | Available Now
- » Suite 200 | 8,899 RSF | Available Now
- » Asking Lease Rate: \$2.35/SF + Electricity

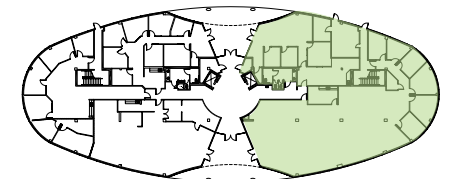
For Lease

1959 Palomar Oaks Way, Carlsbad, CA 92011

SUITE 100/120 | 6,869 RSF
AVAILABLE NOW



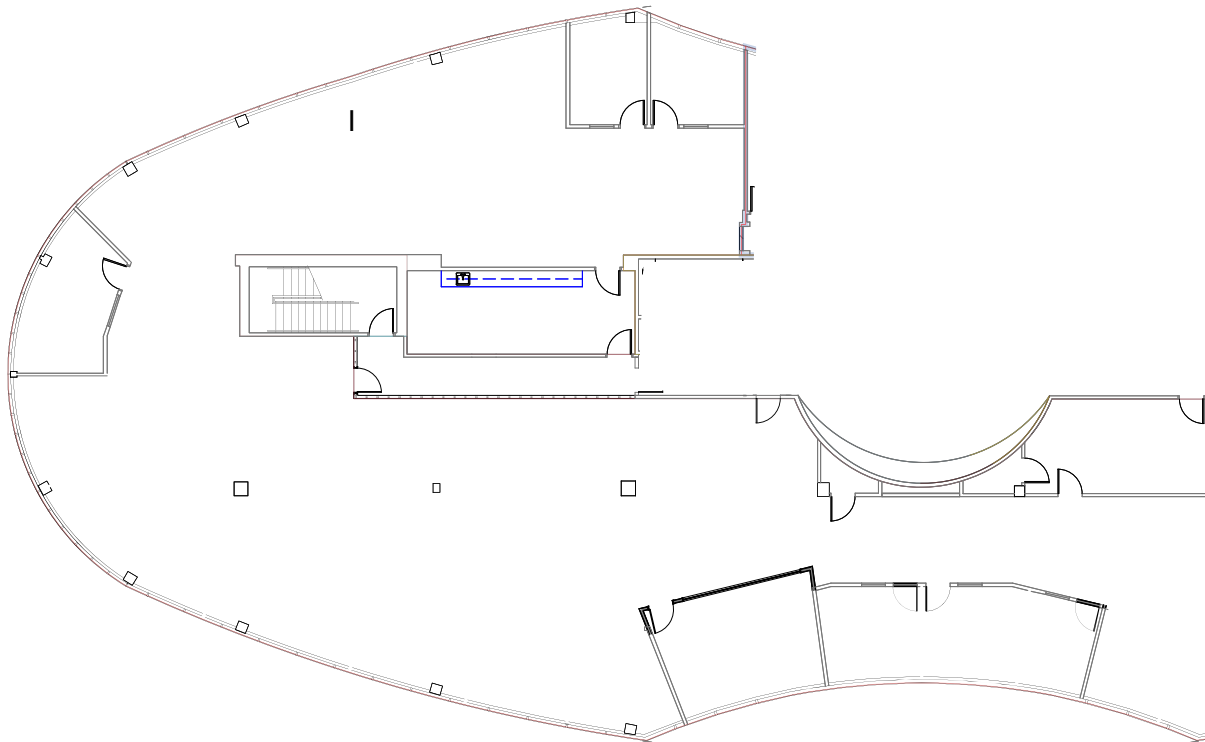
FIRST FLOOR



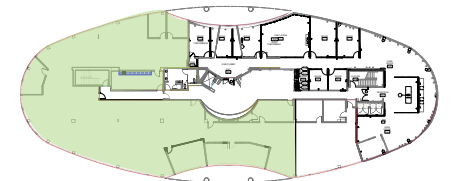
For Lease

1959 Palomar Oaks Way, Carlsbad, CA 92011

SUITE 200 | 8,899 RSF
AVAILABLE NOW



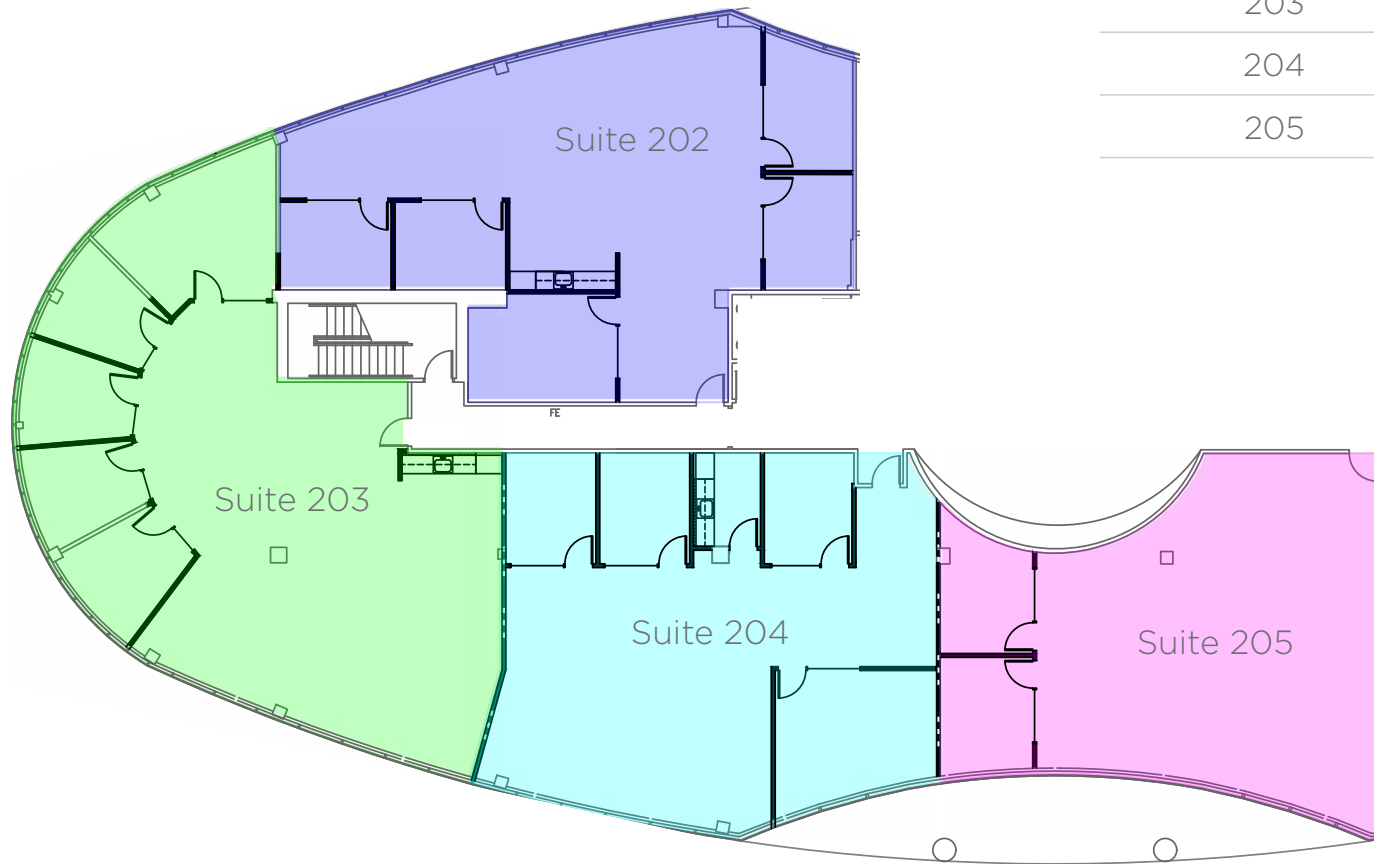
SECOND FLOOR



For Lease

1959 Palomar Oaks Way, Carlsbad, CA 92011

SECOND FLOOR | CONCEPTUAL DEMISING PLAN

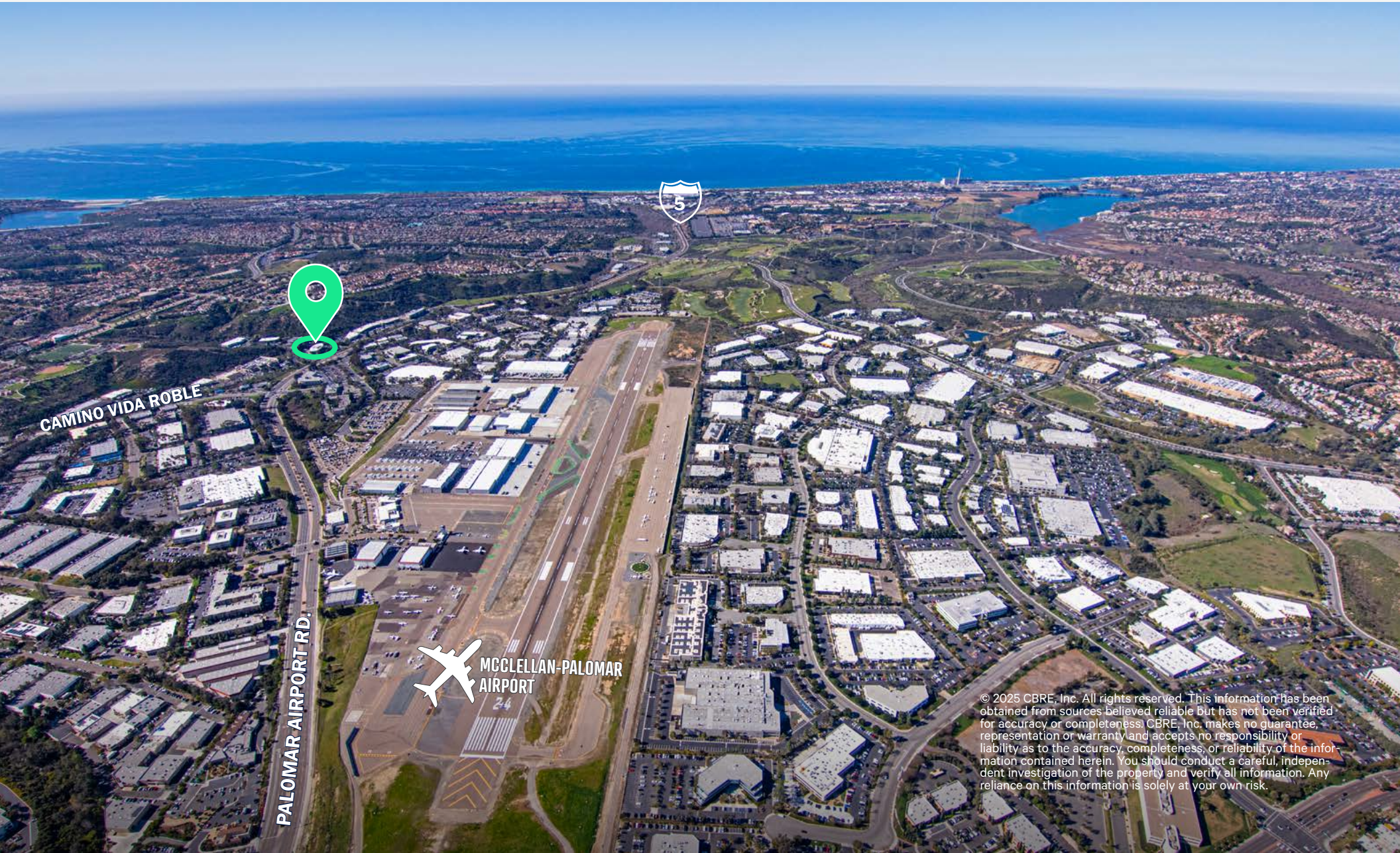


SUITE	SQUARE FEET
202	2,250 RSF
203	2,636 RSF
204	2,180 RSF
205	1,833 RSF

Contact Us

Matty Sundberg
Senior Vice President
+1 760 438 8518
matty.sundberg@cbre.com
Lic. 01257446

Bob Cowan
First Vice President
+1 760 438 8510
bob.cowan@cbre.com
Lic. 01838109



CAMINO VIDA ROBLE

PALOMAR AIRPORT RD.



MCCLELLAN-PALOMAR AIRPORT

© 2025 CBRE, Inc. All rights reserved. This information has been obtained from sources believed reliable but has not been verified for accuracy or completeness. CBRE, Inc. makes no guarantee, representation or warranty and accepts no responsibility or liability as to the accuracy, completeness, or reliability of the information contained herein. You should conduct a careful, independent investigation of the property and verify all information. Any reliance on this information is solely at your own risk.