

33,958 SF AVAILABLE | BIG BOX OPPORTUNITY



8780 NAVAJO RD | SAN DIEGO, CA

FORMER OSH



JIM REUTER 424.262.7101 JREUTER@ATLANTICRETAIL.COM | WILL BRYSON 424.262.7109 WBRYSON@ATLANTICRETAIL.COM

SAN DIEGO, CALIFORNIA

FORMER OSH

Located in the vibrant San Diego County, El Cajon and San Diego offer a diverse market perfect for business growth. The area surrounding San Carlos Village features a variety of thriving shopping centers that draw in a steady stream of shoppers. With popular destinations such as Parkway Plaza and Grossmont Center nearby, businesses benefit from high foot traffic and a diverse customer base. San Carlos Village's strategic location, close proximity to major highways and residential areas, ensures easy access and convenience for customers. The community's supportive atmosphere, combined with a growing population and robust local economy, makes this site an ideal place for businesses to establish themselves and thrive.



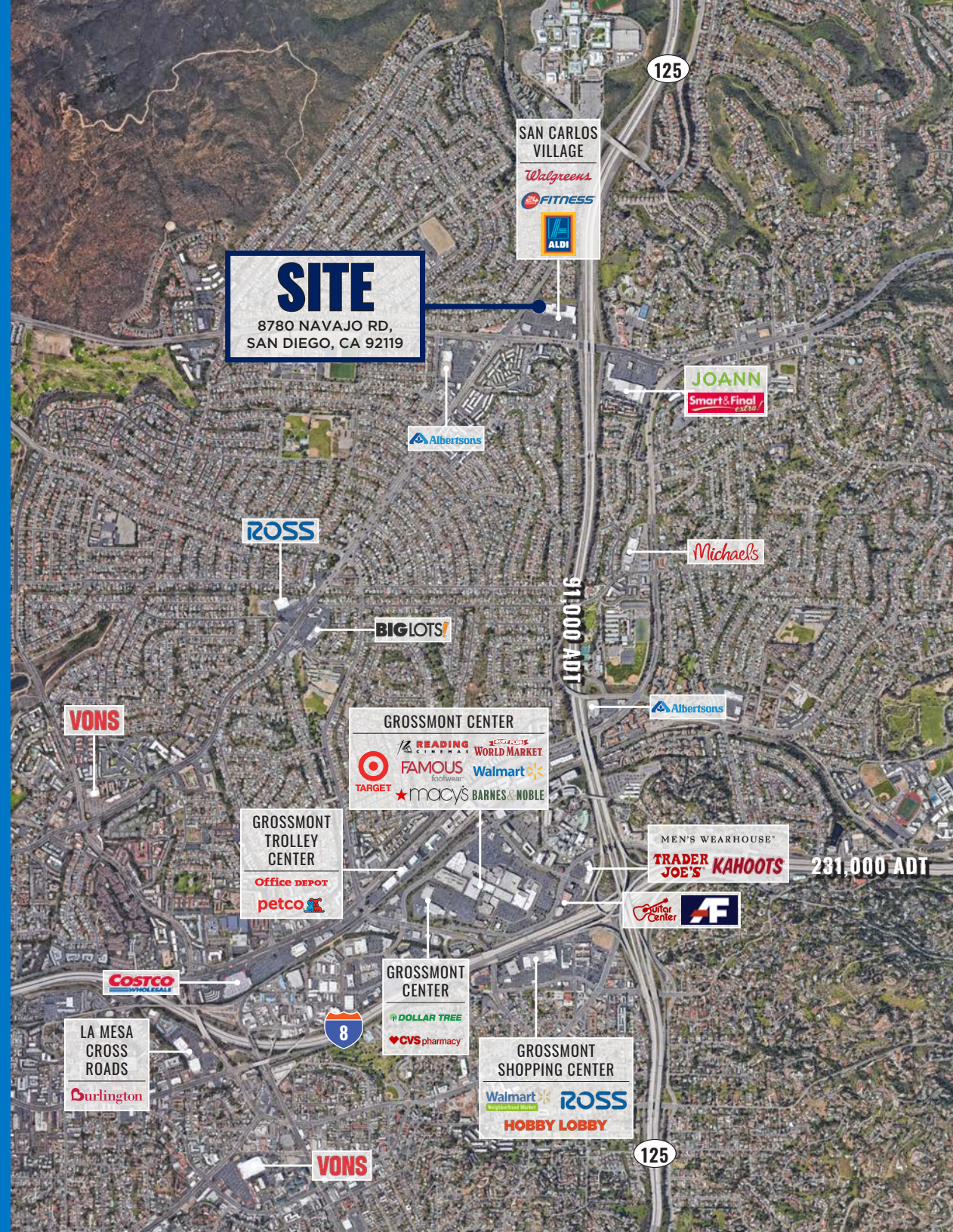
33,958 SF AVAILABLE



FLEXIBLE CONFIGURATION





STRONG VISIBILITY TO MAJOR HWY



PROJECT DETAILS

FORMER OSH • 33,958 SF AVAILABLE • BIG BOX OPPORTUNITY

AVAILABLE SPACE	33,958 SF
TRAFFIC COUNTS	91,000 ADT CA-125
PROPERTY HIGHLIGHTS	Available Immediately Major Hwy Access
NEIGHBORING TENANTS	Aldi, 24 Hr Fitness, JoAnn, Smart & Final Extra!, Ross, Michaels
COUNTY	San Diego
MARKET	El Cajon - San Diego

	1 MILE	3 MILE	5 MILE
 POPULATION	18,359	129,162	384,236
 DAYTIME POPULATION	13,074	138,557	338,856
 MEDIAN HH INCOME	\$ 106,827	\$ 86,429	\$ 81,554



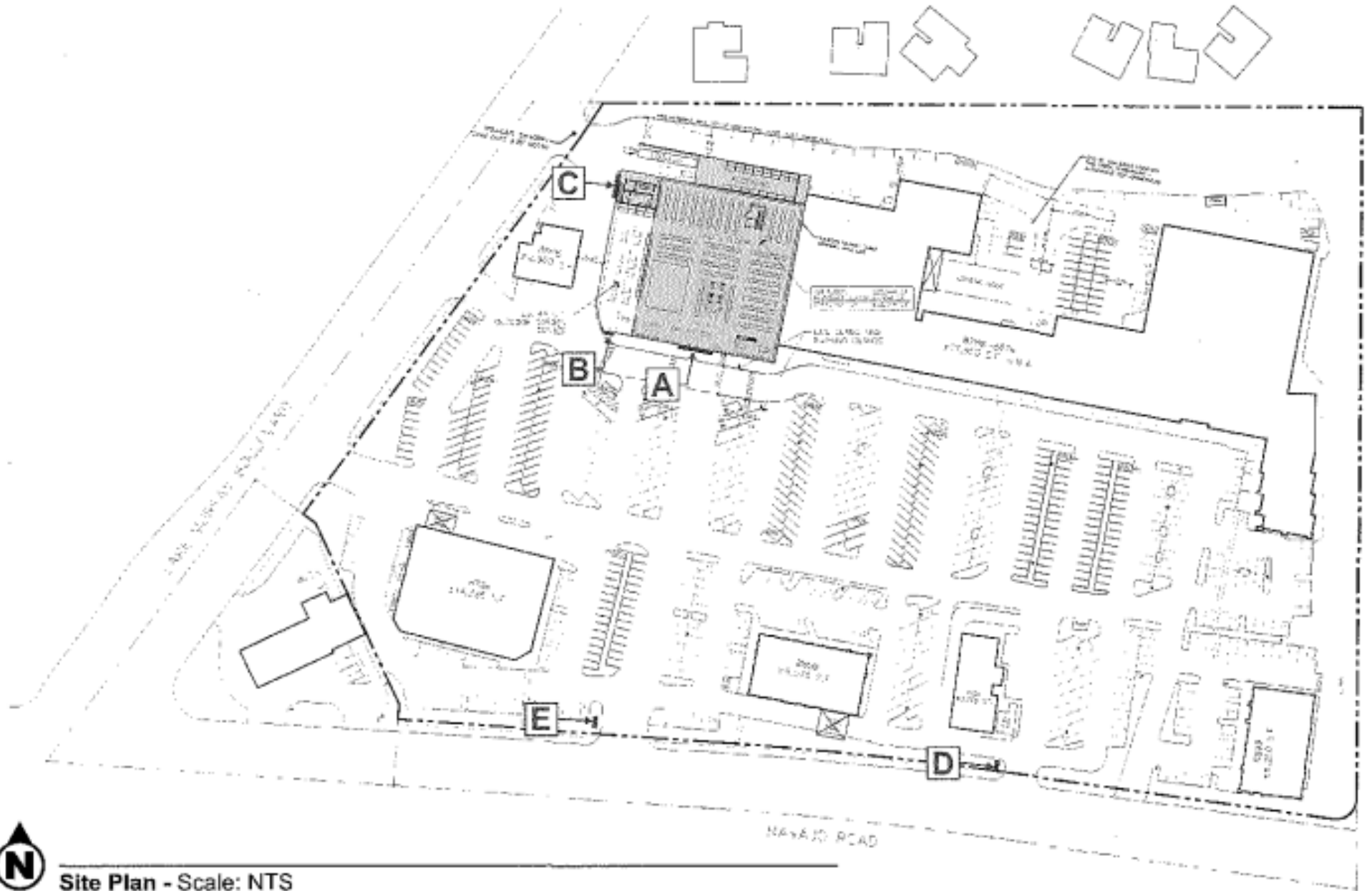
SITE AERIAL

FORMER OSH • 33,958 SF AVAILABLE • BIG BOX OPPORTUNITY



SITE PLAN

FORMER OSH • 33,958 SF AVAILABLE • BIG BOX OPPORTUNITY



Site Plan - Scale: NTS



SAN DIEGO, CALIFORNIA

FORMER OSH

33,958 SF AVAILABLE | BIG BOX OPPORTUNITY

JIM REUTER

424.262.7101
JREUTER@ATLANTICRETAIL.COM

WILL BRYSON

424.262.7109
WBRYSON@ATLANTICRETAIL.COM



- ALBANY**
- ATLANTA**
- BOSTON**
- CHARLOTTE**
- LOS ANGELES**
1334 PARKVIEW AVE.
MANHATTAN BEACH, CA 90266
424.262.7100
- NEW YORK CITY**
- ORLANDO**
- PITTSBURGH**
- WEST PALM BEACH**

WWW.ATLANTICRETAIL.COM

[LINKEDIN.COM/COMPANY/ATLANTIC-RETAIL-PROPERTIES](https://www.linkedin.com/company/atlantic-retail-properties)
 [INSTAGRAM.COM/ATLANTIC_RETAIL/](https://www.instagram.com/atlantic_retail/)

