



FOR LEASE

COMMERCIAL INDUSTRIAL SPACE IN SAN RAFAEL
20 MARK DRIVE, SAN RAFAEL, CA 94903

Northern California's Premier Commercial Real Estate Firm



The above information, while not guaranteed, has been secured from sources we believe to be reliable. This is not an offer to sell or lease and is subject to change or withdrawal. Any interested party should verify the status of the property and the information herein.



OVERVIEW

20 MARK DRIVE SAN RAFAEL, CA

Space Available:	3,456+/- Sq. Ft.
Lease Rate:	\$5,980/MO (\$1.73 PSF)
Type of Lease:	Modified Gross
Ceiling Clear Height	18 Feet
Number of Roll-Up Door	One (1)
Warehouse Ceiling Insulated	Yes
Zoning:	LI/O (Light Industrial/Office)
Power (Sub-Panel):	200 AMPS



20 MARK DRIVE

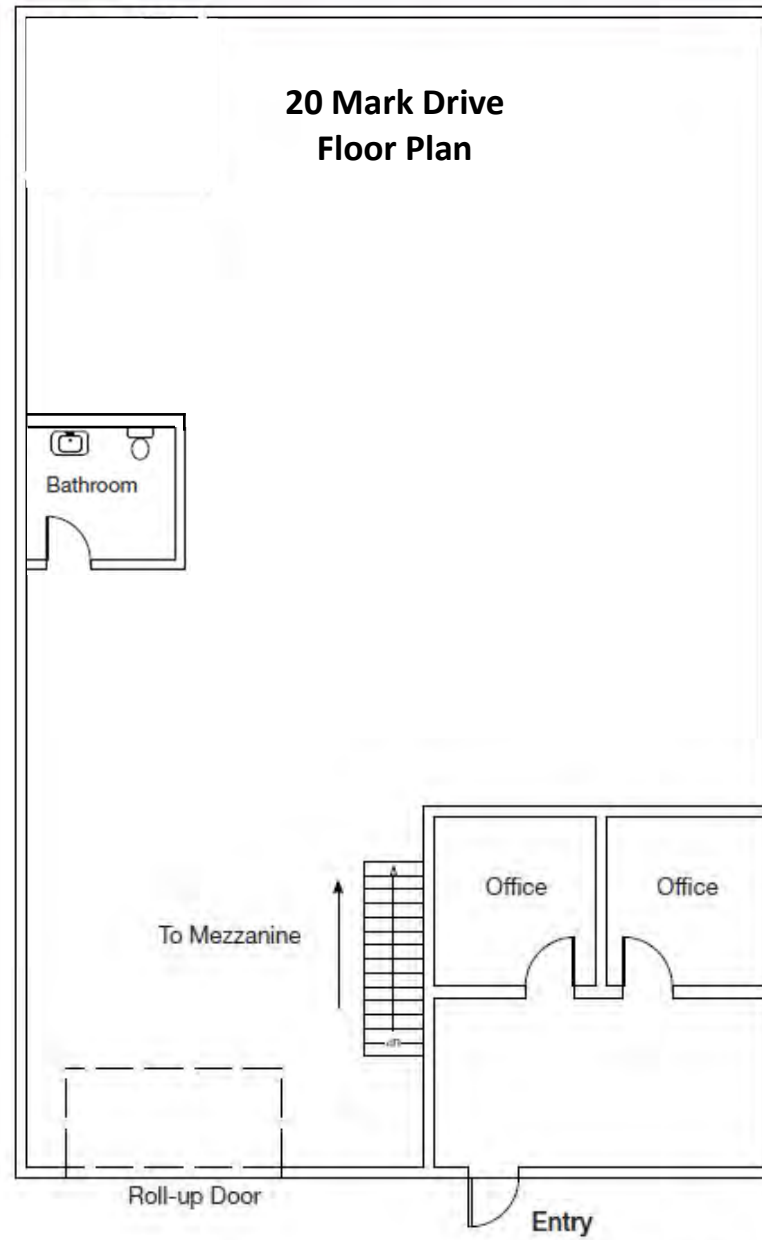
This 3,456+/- Sq. Ft. warehouse has one roll-up door and office space. There is a small, private bathroom in the warehouse. Warehouse ceilings are insulated with 18 foot clear height and skylights.

This warehouse is in Terra Linda with easy access off Lucas Valley/Smith Ranch Rd exit of Highway 101. Quiet location with ample parking next to and near unit





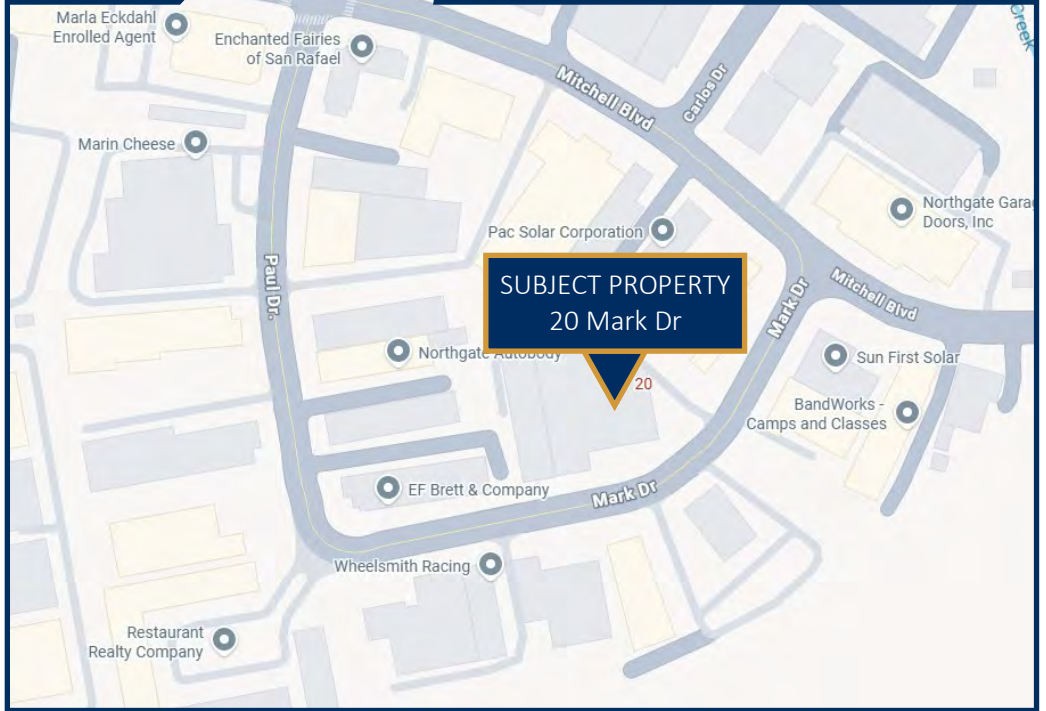
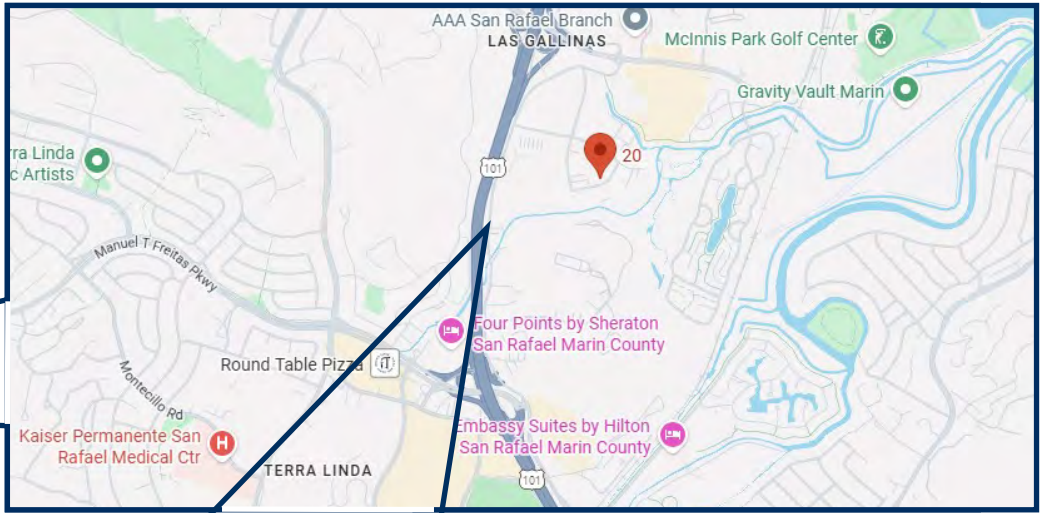
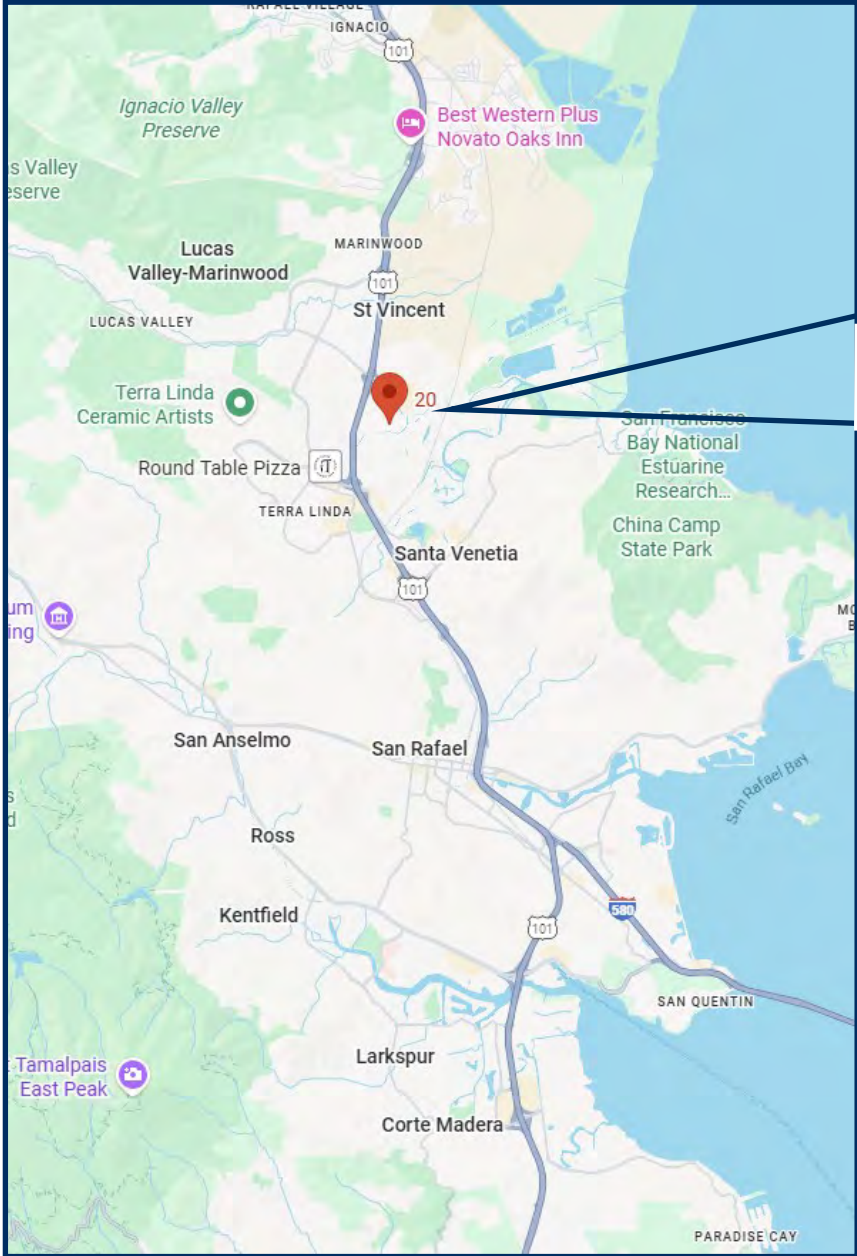
OVERVIEW



Floor Plan Not to Scale



MAP



The above information, while not guaranteed, has been secured from sources we believe to be reliable. This is not an offer to sell or lease and is subject to change or withdrawal. Any interested party should verify the status of the property and the information herein.



LISTING TEAM

Dave Losk

CA BRE # 00845759

Cell: 415-246-6024

Office: 415-884-4850 Ext 100.

Email: davelosk@losk.com

Dillon Losk

CA BRE # 02227222

Cell: 707-228-5113

Office: 415-884-4850 Ext 104.

Email: dillon@losk.com

North Bay Property Advisors

Novato Office

100 Galli Drive Suite 2

Novato, CA 94949

415-884-4850

www.losk.com



The above information, while not guaranteed, has been secured from sources we believe to be reliable. This is not an offer to sell or lease and is subject to change or withdrawal. Any interested party should verify the status of the property and the information herein.