

# KINGSLEY HALL

MANCHESTER AIRPORT M90 4AN

## SECOND FLOOR SUITE C 4,615 SQ FT (429 SQ M)

- > FULLY AIR CONDITIONED WORKSPACE
- > BENEFIT OF EXISTING FIT-OUT IF REQUIRED
- > SECURE ONSITE PARKING AVAILABLE
- > CYCLE HUB AND SHOWER FACILITY



SHOWS EXISTING FIT-OUT AVAILABLE IF REQUIRED

To discuss how your own requirements can be accommodated at Kingsley Hall please contact a member of the leasing team.

**Orbit**  
Developments  
A MEMBER OF THE EMERSON GROUP

**01625 588200**  
[www.orbit-developments.co.uk](http://www.orbit-developments.co.uk)

[www.orbit-developments.co.uk/property/kingsley-hall/](http://www.orbit-developments.co.uk/property/kingsley-hall/)



All figures quoted are subject to change and are exclusive of VAT where applicable and subject to contract. Service charges are budget figures. Please confirm with Orbit Developments for details of what is included. Business rates should be confirmed with the relevant local authority and are only provided as an accurate estimate and therefore may vary from those figures quoted. Please contact Orbit Developments for further details on any figures quoted and for specific terms including available incentive packages.

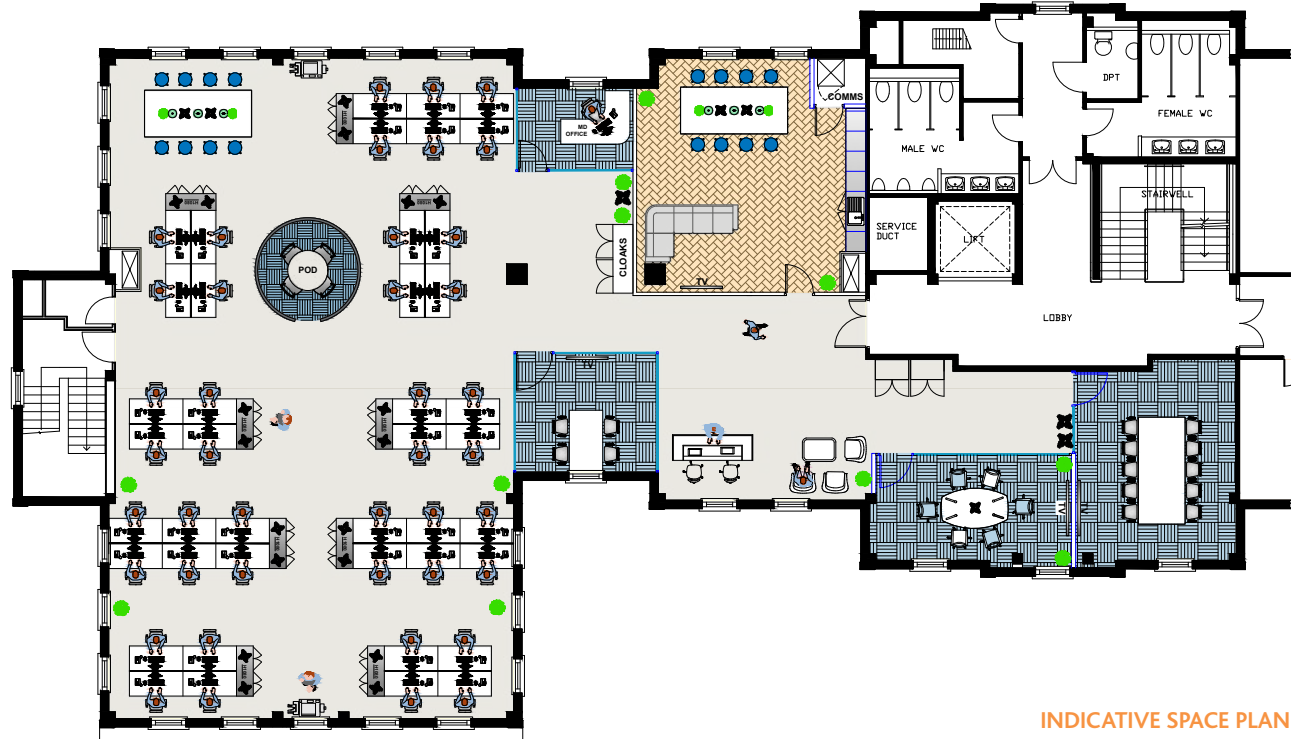
# KINGSLEY HALL

MANCHESTER AIRPORT M90 4AN

## SECOND FLOOR SUITE C 4,615 SQ FT (429 SQ M)

### KEY:

- 42 Desks open plan office (1600mm)
- Manager's office
- 4 Person meeting room
- 6 Person meeting room
- 10 Person room
- Informal pod
- Kitchen/breakout area
- Reception/waiting area
- Collaboration area



INDICATIVE SPACE PLAN

To discuss how your own requirements can be accommodated at Kingsley Hall please contact a member of the leasing team.

**Orbit**  
Developments  
A MEMBER OF THE EMERSON GROUP

**01625 588200**  
[www.orbit-developments.co.uk](http://www.orbit-developments.co.uk)



[www.orbit-developments.co.uk/property/kingsley-hall/](http://www.orbit-developments.co.uk/property/kingsley-hall/)

All figures quoted are subject to change and are exclusive of VAT where applicable and subject to contract. Service charges are budget figures. Please confirm with Orbit Developments for details of what is included. Business rates should be confirmed with the relevant local authority and are only provided as an accurate estimate and therefore may vary from those figures quoted. Please contact Orbit Developments for further details on any figures quoted and for specific terms including available incentive packages.