

# 401 Eighth Avenue

SW CORNER OF 30TH STREET & 8TH AVENUE  
MIDTOWN



# 401 Eighth Avenue

SW CORNER OF 30TH STREET & 8TH AVENUE  
MIDTOWN

Size: 5,000 SF

Frontage: 60' on 8th Ave + 50' on W 30th St

Ceiling Heights: 17 Feet

Possession: Immediate

Transportation: **A C E 1 2 3**

## Comments:

- Situated at the base of an 18-story, new construction condominium
- Accessible via Penn Station & Moynihan Hall
- Area tenants include Madison Square Garden, Fashion Institute of Technology (FIT), Moynihan Hall, home to Facebook & Hudson Yards
- Only new ground up Condo within a 10-block radius on Eight Avenue
- Space is divisible:  
Space A (corner) - 1,300 SF Ground  
Space B (inline) - 3,700 SF Ground
- All uses considered including F&B



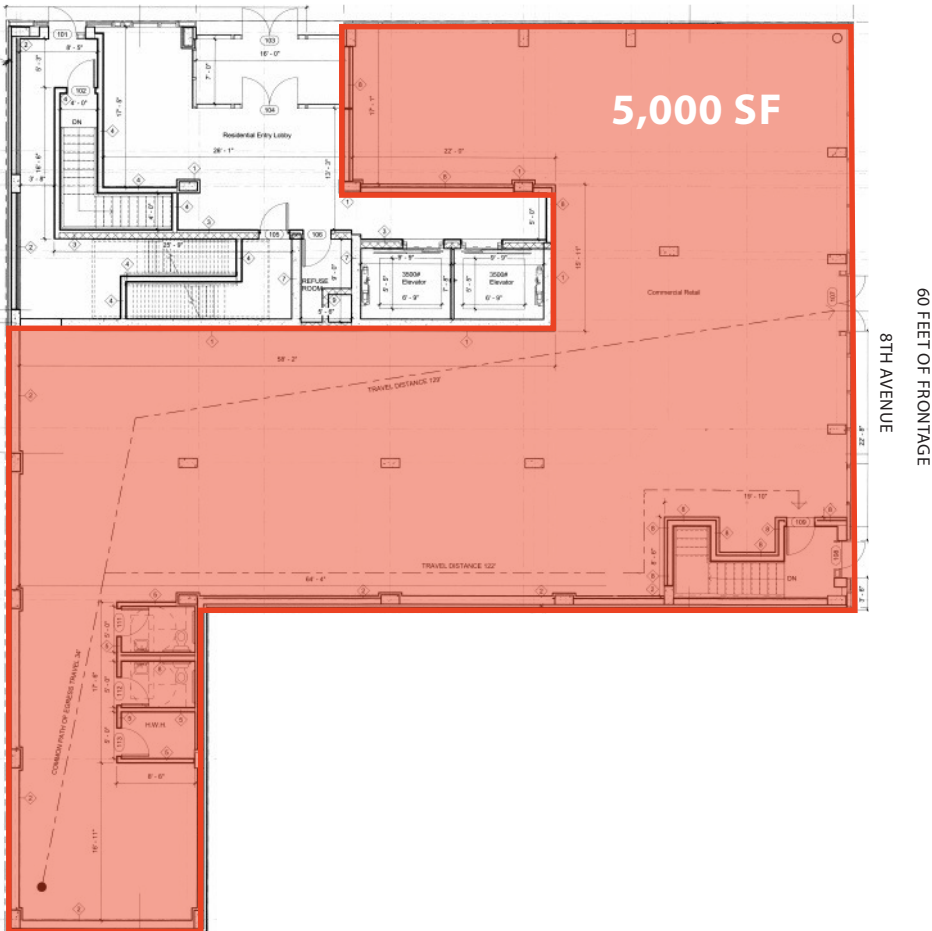
# 401 Eighth Avenue

SW CORNER OF 30TH STREET & 8TH AVENUE  
MIDTOWN

## DIVISION SCENARIOS:

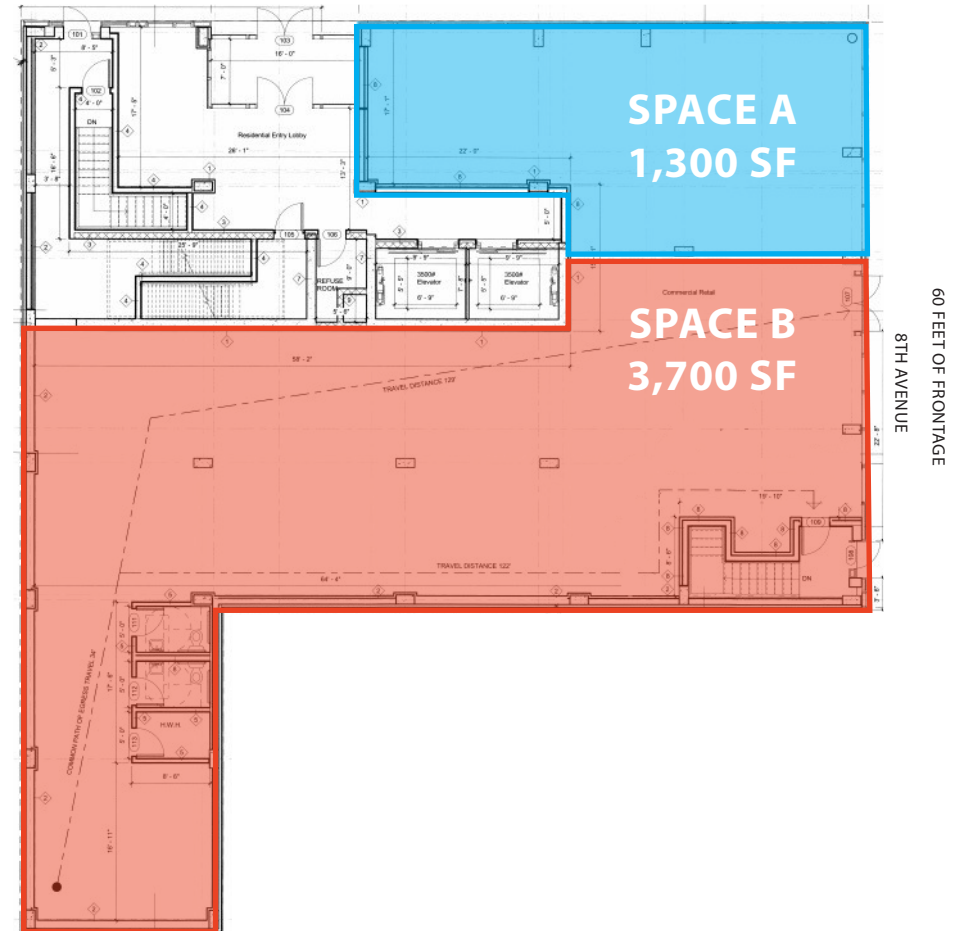
### SCENARIO #1

50 FEET OF FRONTAGE  
WEST 30TH STREET



### SCENARIO #2

50 FEET OF FRONTAGE  
WEST 30TH STREET



# 401 Eighth Avenue

SW CORNER OF 30TH ST & 8TH AVE | MIDTOWN

**About the New Penn District.** 427 7th Avenue is directly across from the new Penn District and the new Moynihan Train Hall.

A reimagined development plan reducing density, Investing in affordable housing, increasing transit access, and activating pedestrian-friendly streetscape

The New Penn District will be the busiest transit hub in the Western Hemisphere.

More than 60% of people using Penn Station every day are subway, LIRR and NJ Transit riders.

## PENN ONE



PENN STATION MOYNIHAN HALL



# 401 Eighth Avenue

SW CORNER OF 30TH STREET & 8TH AVENUE  
MIDTOWN



401  
Eighth Avenue  
SW CORNER OF 30TH STREET & 8TH AVENUE | MIDTOWN

FOR MORE INFORMATION,  
PLEASE CONTACT:

**DIVYAA SARIN**

732.516.8246 | DSarin@ksrny.com

**NATHAN ABALLI**

917.915.8763 | NAballi@ksrny.com

