

FOR LEASE

1335 S. LA BREA AVE

LOS ANGELES, CA 90019

**STEVE RAVAN**

Tel - 323-782-1262 | [steveravan@southparkgroup.com](mailto:steveravan@southparkgroup.com)  
DRE License #01747222

**MANE AJARYAN**

Tel - 818-523-4997 | [mane@southparkgroup.com](mailto:mane@southparkgroup.com)  
DRE License #02099173

# Property Overview

## FOR LEASE

**1335 S. LA BREA AVENUE  
LOS ANGELES, CA 90029**

3,200 SF warehouse / office / showroom space along the highly trafficked La Brea corridor. High bow-truss ceilings, roll-up gates, flexible layout, and strong street presence make this an ideal fit for creative, production, light industrial, or auto-oriented users. Centrally located with easy access to Mid-Wilshire, Beverly Grove, Hollywood, and West Hollywood—directly across from Target, Sprouts, and Starbucks. Approx. 5–6 on-site parking spaces, plus a rare opportunity to include a spray booth on the lot.

## USE

WAREHOUSE / OFFICE

## SIZE

± 3,200 SF



## RENT

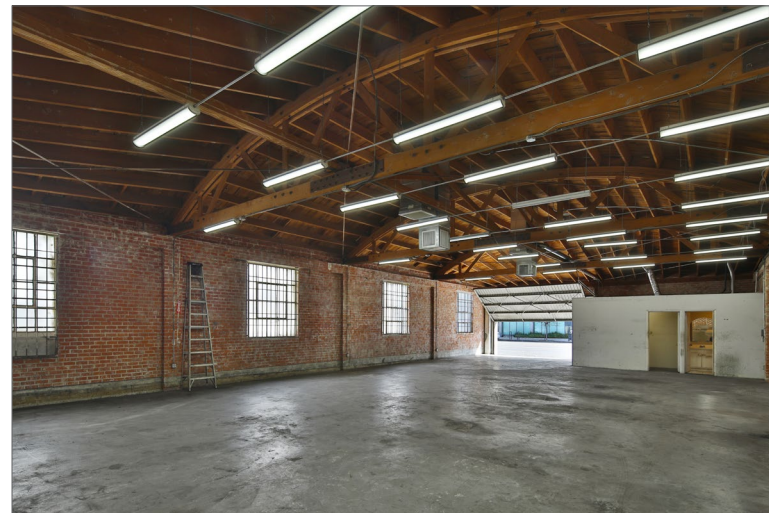
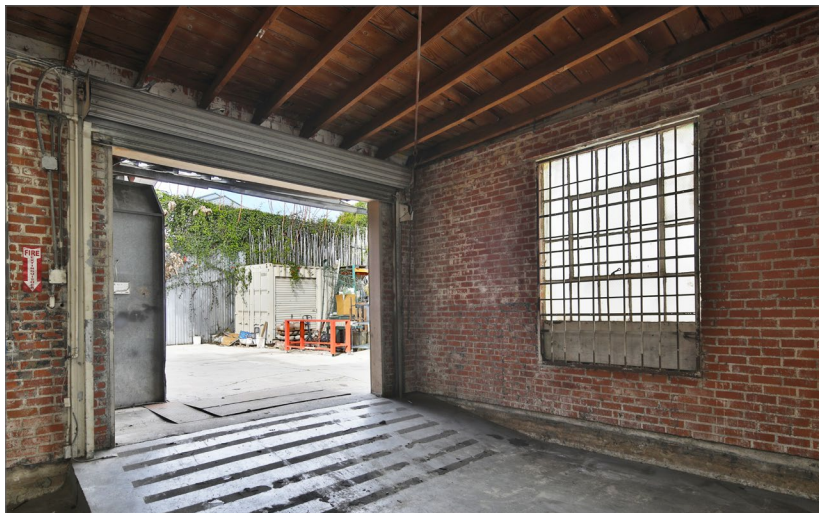
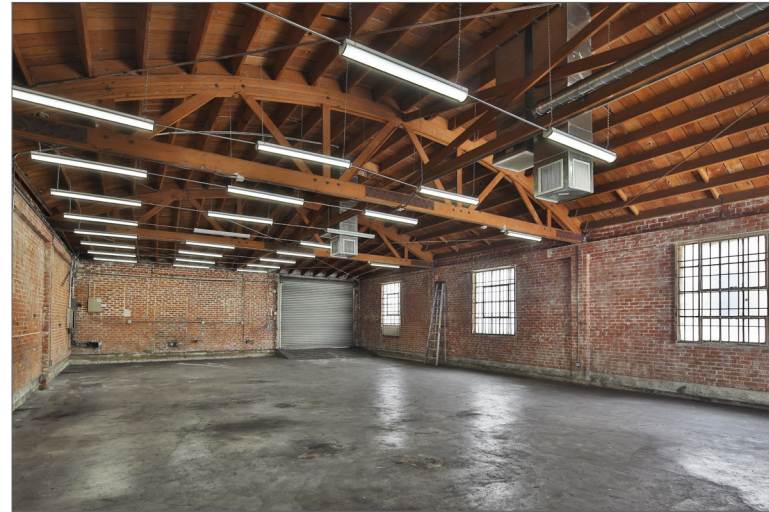
\$3.65/SF MODIFIED GROSS

## PARKING

5 SPACES ON SITE



# Interior Photos





# Map Overview



PACE

DAVID  
KORDANSKY  
GALLERY

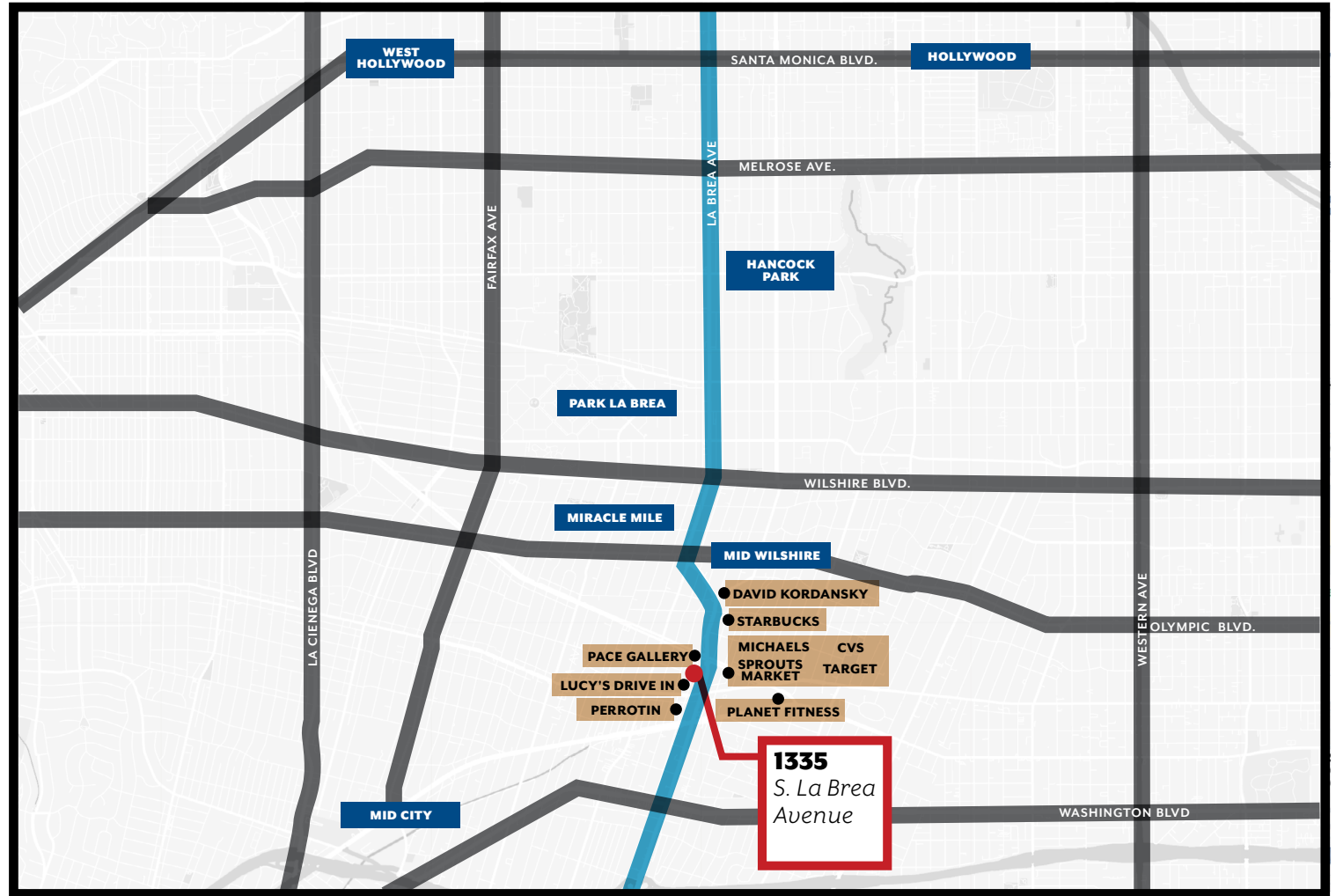
Michaels



PERROTIN



SPROUTS  
FARMERS MARKET



## Contact Us



### **STEVE RAVAN**

Tel - 323-782-1262

[steveravan@southparkgroup.com](mailto:steveravan@southparkgroup.com)

DRE License #01747222

### **MANE AJARYAN**

Tel - 818-523-4997

[mane@southparkgroup.com](mailto:mane@southparkgroup.com)

DRE License #02099173