



**FOR LEASE**

**6501 Hall Street**

St. Louis, MO 63147

**Lease Rate:**

**\$5.85** ~~\$6.50~~

PSF, NNN

**CONTACT US**

**Daniel Bamberger, SIOR**

Executive Vice President  
+1 314 584 6226  
daniel.bamberger@colliers.com

**Joseph Hill, CCIM, SIOR**

Executive Vice President  
+1 314 584 6213  
joseph.hill@colliers.com

**Colliers**

101 South Hanley Road  
Suite 1400  
St. Louis, MO 63105  
+1 314 863 4447  
colliers.com/stlouis

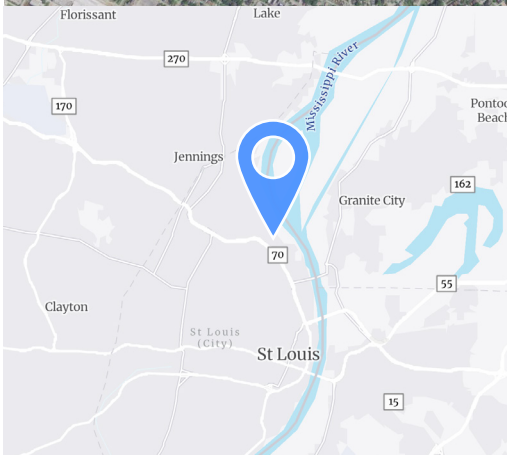
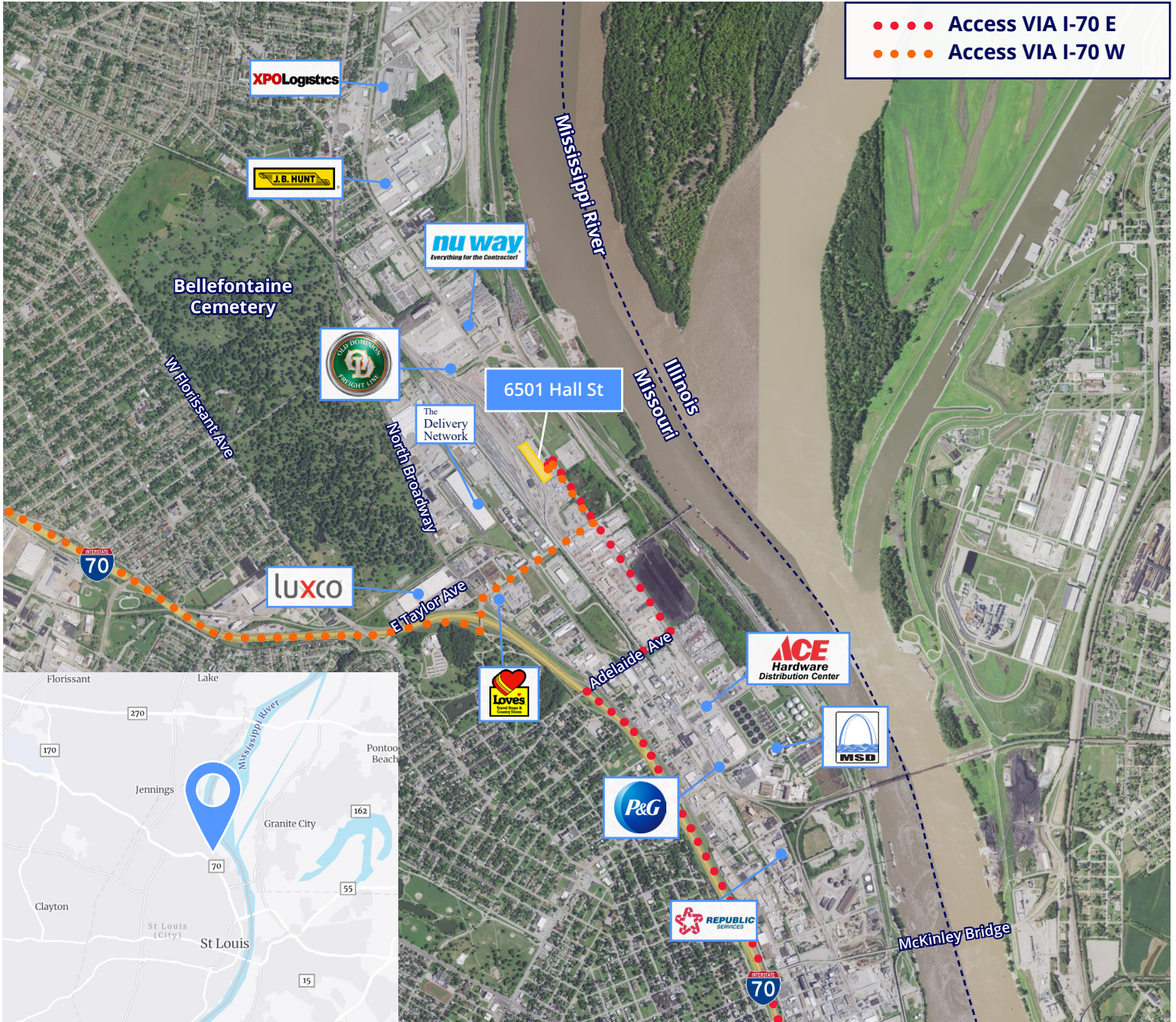
## 69,422 SF Industrial Distribution Space

### Highlights

- Total Building Size: 163,490 SF
- Total Available: 69,422 SF end cap space
- Flexible Options: 23,200 SF - 69,422 SF
- Approximately 725 SF office
- Eight (9' x 10') dock-high loading docks
- One (14' x 12') drive-in door
- 44' x 44' column spacing
- 26' - 27' clear height
- Yard Space
  - Up to 40 trailer drops available
  - Possible fenced outside storage
- Rail service available
- Easy access to Interstate 70



# LOCATION



## CONTACT US

**Daniel Bamberger, SIOR**  
 Executive Vice President  
 +1 314 584 6226  
 daniel.bamberger@colliers.com

**Joseph Hill, CCIM, SIOR**  
 Executive Vice President  
 +1 314 584 6213  
 joseph.hill@colliers.com

**Colliers**  
 101 South Hanley Road  
 Suite 1400  
 St. Louis, MO 63105  
 +1 314 863 4447  
 colliers.com/stlouis

